

PROFILE OF FLOOD WALLS AND DIKES
SCALE: HOR. 1" = 200'
VERT. 1" = 10'

See "blow-up" on Figure 2b

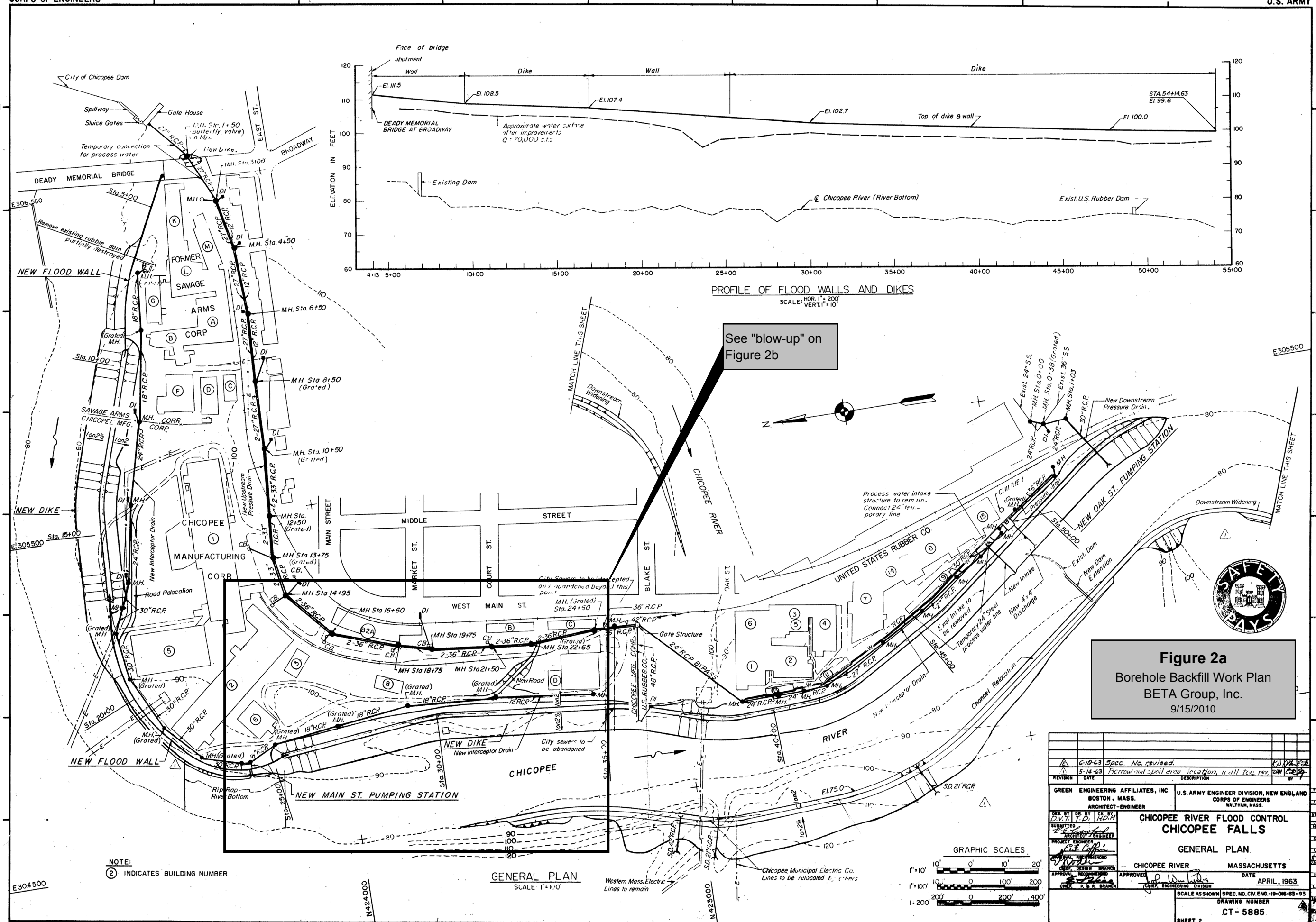
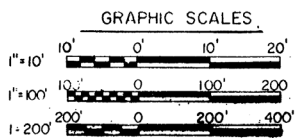


Figure 2a
Borehole Backfill Work Plan
BETA Group, Inc.
9/15/2010

NOTE:
② INDICATES BUILDING NUMBER

GENERAL PLAN
SCALE: 1" = 100'



| | | | |
|----------|---------|--|-----------|
| REVISION | DATE | DESCRIPTION | BY |
| 1 | 2-19-63 | Spec. No. revised. | JL/MA/FSB |
| 2 | 5-14-63 | Revised and soil area location, all loc. rev. com. C&G | MA/FSB |

| | | | |
|------------------|--------------------|--------|-------------|
| DESIGNED BY | DR. BY | CK. BY | DATE |
| PROJECT ENGINEER | ARCHITECT-ENGINEER | | |
| APPROVED | APPROVED | DATE | APRIL, 1963 |

| | |
|---|--|
| GREEN ENGINEERING AFFILIATES, INC. BOSTON, MASS. | U.S. ARMY ENGINEER DIVISION, NEW ENGLAND CORPS OF ENGINEERS WALTHAM, MASS. |
| CHICOPEE RIVER FLOOD CONTROL CHICOPEE FALLS | GENERAL PLAN |
| CHICOPEE RIVER | MASSACHUSETTS |
| SCALE AS SHOWN | SPEC. NO. CIV. ENG. 10-06-63-93 |
| DRAWING NUMBER | CT-5885 |
| SHEET 2 | |

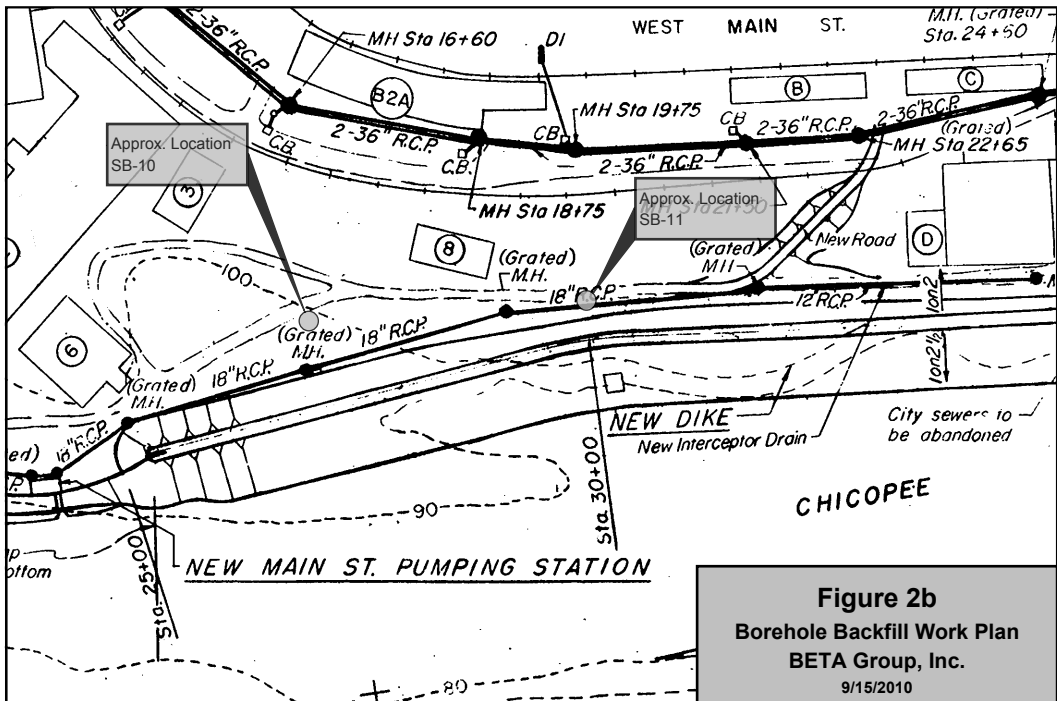


Figure 2b
 Borehole Backfill Work Plan
 BETA Group, Inc.
 9/15/2010