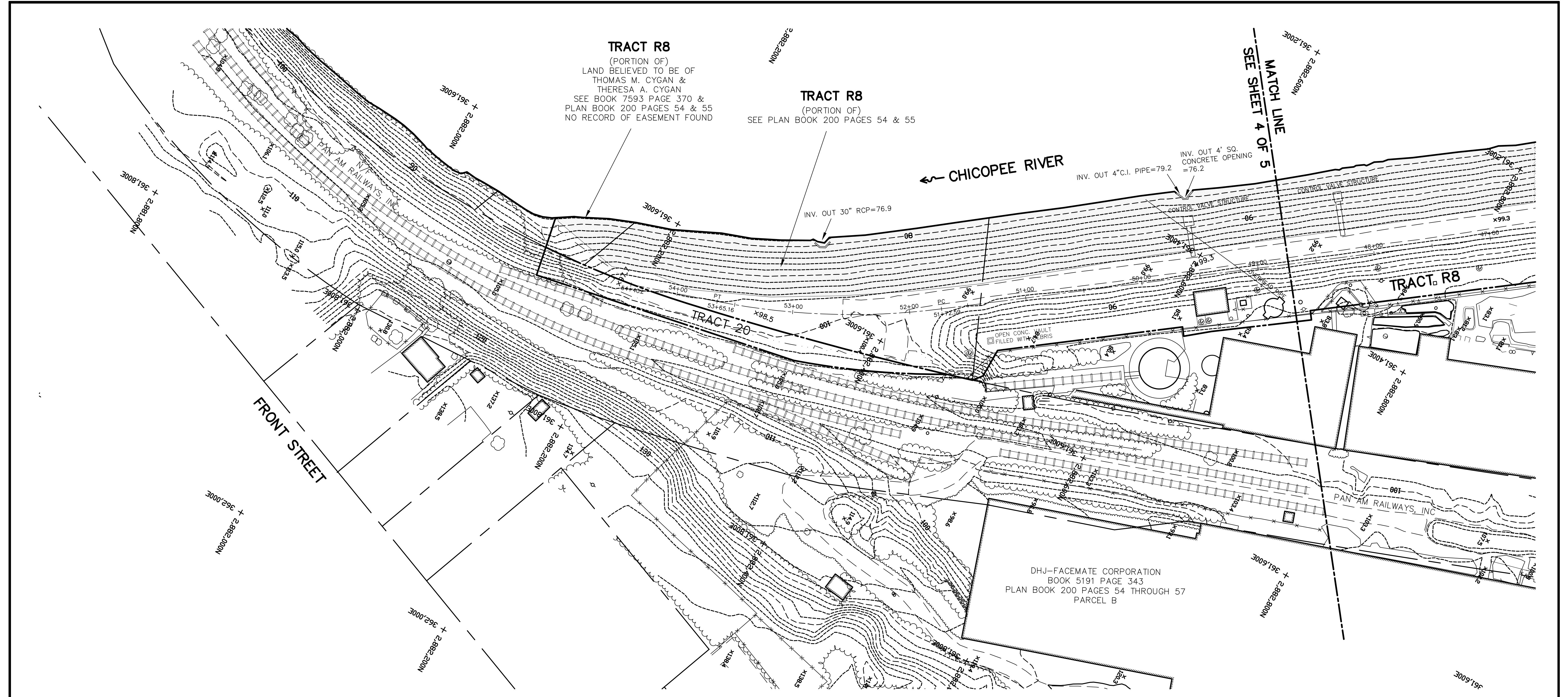


TRACT R8
(PORION OF)
LAND BELIEVED TO BE OF
THOMAS M. CYGAN &
THERESA A. CYGAN
SEE BOOK 7593 PAGE 370 &
PLAN BOOK 200 PAGES 54 & 55
NO RECORD OF EASEMENT FOUND

TRACT R8
(PORION OF)
SEE PLAN BOOK 200 PAGES 54 & 55

← CHICOPEE RIVER

MATCH LINE
SEE SHEET 4 OF 5



LINE & SYMBOL LEGEND

○	TRAFFIC SIGNAL	— x — x — x — x —	FENCE
⊠	RAILROAD CONTROL BOX	— △ — △ — △ — △ —	GUARD RAIL
⊠	RAILROAD SWITCH	— x — x — x — x — x —	PARTLY VISIBLE FENCE
○	SHRUB	— A — A — A — A —	RETAINING WALL
○	ROCK	— — — — —	INTERMEDIATE CONTOUR
⊙	MARSH SYMBOL	— — — — —	INDEX CONTOUR
⊙	HYDRANT	— — — — —	FLOOD CONTROL EASEMENT
⊙	GATE/VALVE	— — — — —	CONCRETE FLOOD WALL
⊙	UTILITY VAULT	— — — — —	APPROXIMATE LEVEE BASELINE
⊙	UNCERTAIN HYDRANT	— — — — —	OTHER EASEMENT LINES
⊙	MANHOLE	— — — — —	PAVED ROAD
⊙	UNCERTAIN MANHOLE	— — — — —	DIRT DRIVE
⊙	CATCH BASINS	— — — — —	RAILROAD
⊙	UNCERTAIN CATCH BASIN	— — — — —	BUILDING
⊙	UTILITY POLE	— — — — —	TREE LINE
⊙	UTILITY POLE WITH LIGHT	— — — — —	SCRUB LINE
⊙	STREET LIGHT	— — — — —	HEDGE ROW
⊙	GUY ANCHOR	— — — — —	BOUNDARY LINE
⊙	UNCERTAIN UTILITY POLE		
⊙	UTILITY BOX		
⊙	POLE		
⊙	POST		
⊙	UNCERTAIN POLE		
⊙	ROAD SIGN		
⊙	MONUMENT		
⊙	UNCERTAIN OBJECT		
⊙	SPOT HEIGHT		
⊙	FIELD LOCATED GRADE		
⊙	TREE		
⊙	RIP-RAP		

SURVEYOR'S NOTES:

1. TOPOGRAPHIC DATA SHOWN HEREON IS BASED UPON AERIAL PHOTOGRAPHY TAKEN DURING APRIL, 2008. PHOTOGRAPHY AND MAPPING WERE PERFORMED BY COL-EAST, INC. OF NORTH ADAMS, MA AND SUPPLEMENTED WITH GROUND SURVEYS PERFORMED BY HERITAGE SURVEYS, INC. FROM MAY, 2008 THROUGH SEPTEMBER, 2009.
2. FOR REFERENCE TO BOUNDARY LINE AND EASEMENTS SEE A PLAN PREPARED BY HERITAGE SURVEYS, INC. TITLED "PLAN OF FLOOD CONTROL AND LEVEE EASEMENT IN CHICOPEE, MASSACHUSETTS SURVEYED FOR THE CITY OF CHICOPEE", DATED JUNE 15, 2009, SHEETS 1 THROUGH 4.
3. UNDERGROUND UTILITY LOCATIONS SHOWN HEREON ARE BASED UPON SURFACE FEATURES AS LOCATED BY SURVEY AND AVAILABLE RECORD DATA, AND ARE APPROXIMATE. ACTUAL LOCATIONS SHOULD BE VERIFIED WITH THE APPROPRIATE UTILITY COMPANY AND/OR MUNICIPAL DEPARTMENT PRIOR TO FINAL DESIGN AND/OR CONSTRUCTION.
4. LOCATION OF FLOODWALL AND LEVEE BASELINES SHOWN ARE APPROXIMATE AND ARE BASED UPON PLANS PREPARED BY THE U.S. ARMY CORPS OF ENGINEERS FOR CHICOPEE RIVER FLOOD CONTROL DATED APRIL, 1963. NO MONUMENTATION OF BASELINES WAS FOUND AND IS HISTORICAL ONLY.
5. TOP CONCRETE FLOODWALL AND CENTERLINE LEVEE GRADES IN BOLD TYPE ARE FIELD LOCATED BY SURVEY AND ARE NOT THE RESULT OF AERIAL MAPPING. REFER TO LEGEND FOR AERIAL SPOT HEIGHT INDICATORS.

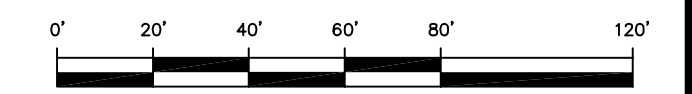
NORTH AMERICAN VERTICAL DATUM 1988

NOTE: FOR THIS FLOOD CONTROL SYSTEM, ELEVATIONS IN NGVD29 CAN BE OBTAINED BY ADDING 0.70 FEET TO THE ELEVATIONS SHOWN ON THIS PLAN.

CHICOPEE FLOOD CONTROL WORKS
CHICOPEE FALLS SYSTEM SHEET 5 OF 5

TOPOGRAPHIC PLAN OF LAND IN
CHICOPEE, MASSACHUSETTS
SURVEYED FOR
THE CITY OF CHICOPEE

SCALE: 1" = 40'



DATE: DECEMBER 12, 2009

HERITAGE SURVEYS, INC.

REGISTERED PROFESSIONAL LAND SURVEYORS
COLLEGE HIGHWAY & CLARK STREET
POST OFFICE BOX 1
SOUTHAMPTON, MASSACHUSETTS
(413) 527-3600

