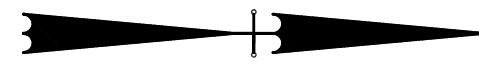
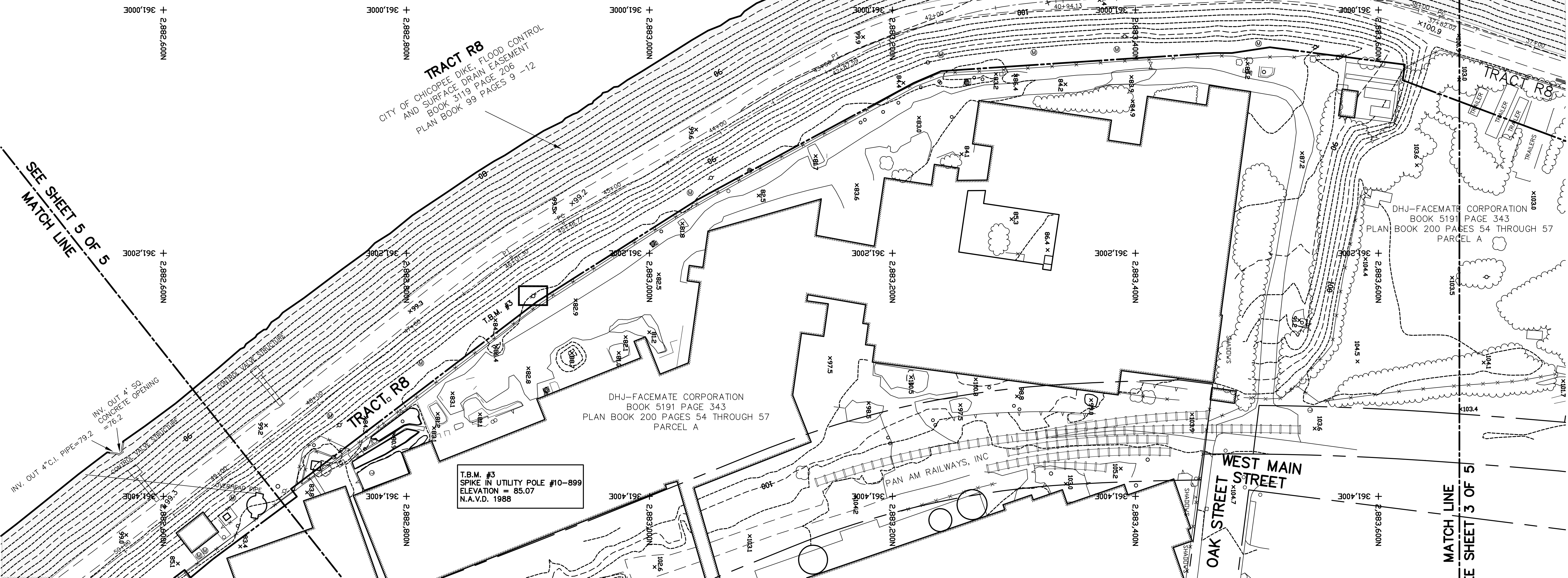


MERIDIAN OF THE MASSACHUSETTS  
STATE PLANE COORDINATE SYSTEM  
1983 DATUM



SEE SHEET 5 OF 5  
MATCH LINE



MATCH LINE

MATCH LINE  
SEE SHEET 3 OF 5

LINE & SYMBOL LEGEND

<ul style="list-style-type: none"> <li>○ TRAFFIC SIGNAL</li> <li>⊠ RAILROAD CONTROL BOX</li> <li>⊠ RAILROAD SWITCH</li> <li>○ SHRUB</li> <li>○ ROCK</li> <li>○ MARSH SYMBOL</li> <li>○ HYDRANT</li> <li>○ GATE/VALVE</li> <li>○ UTILITY VAULT</li> <li>○ UNCERTAIN HYDRANT</li> <li>○ MANHOLE</li> <li>○ UNCERTAIN MANHOLE</li> <li>○ CATCH BASIN</li> <li>○ UNCERTAIN CATCH BASIN</li> <li>○ UTILITY POLE</li> <li>○ UTILITY POLE WITH LIGHT</li> <li>○ STREET LIGHT</li> <li>○ GUY ANCHOR</li> <li>○ UNCERTAIN UTILITY POLE</li> <li>○ UTILITY BOX</li> <li>○ POLE</li> <li>○ POST</li> <li>○ UNCERTAIN POLE</li> <li>○ ROAD SIGN</li> <li>○ MONUMENT</li> <li>○ UNCERTAIN OBJECT</li> <li>○ x723.8 SPOT HEIGHT</li> <li>○ x74.0 FIELD LOCATED GRADE</li> <li>○ TREE</li> </ul>	<ul style="list-style-type: none"> <li>--- FENCE</li> <li>--- GUARD RAIL</li> <li>--- PARTLY VISIBLE FENCE</li> <li>--- RETAINING WALL</li> <li>--- INTERMEDIATE CONTOUR</li> <li>--- INDEX CONTOUR</li> <li>--- FLOOD CONTROL EASEMENT</li> <li>--- CONCRETE FLOOD WALL</li> <li>--- APPROXIMATE LEVEE BASELINE</li> <li>--- OTHER EASEMENT LINES</li> <li>--- PAVED ROAD</li> <li>--- DIRT DRIVE</li> <li>--- RAILROAD</li> <li>--- BUILDING</li> <li>--- TREE LINE</li> <li>--- SCRUB LINE</li> <li>--- HEDGE ROW</li> <li>--- BOUNDARY LINE</li> </ul>
---	--

SURVEYOR'S NOTES:

1. TOPOGRAPHIC DATA SHOWN HEREON IS BASED UPON AERIAL PHOTOGRAPHY TAKEN DURING APRIL, 2008. PHOTOGRAPHY AND MAPPING WERE PERFORMED BY COL-EAST, INC. OF NORTH ADAMS, MA AND SUPPLEMENTED WITH GROUND SURVEYS PERFORMED BY HERITAGE SURVEYS, INC. FROM MAY, 2008 THROUGH SEPTEMBER, 2009.
2. FOR REFERENCE TO BOUNDARY LINE AND EASEMENTS SEE A PLAN PREPARED BY HERITAGE SURVEYS, INC. TITLED "PLAN OF FLOOD CONTROL AND LEVEE EASEMENT IN CHICOPEE, MASSACHUSETTS SURVEYED FOR THE CITY OF CHICOPEE", DATED JUNE 15, 2009, SHEETS 1 THROUGH 4.
3. UNDERGROUND UTILITY LOCATIONS SHOWN HEREON ARE BASED UPON SURFACE FEATURES AS LOCATED BY SURVEY AND AVAILABLE RECORD DATA, AND ARE APPROXIMATE. ACTUAL LOCATIONS SHOULD BE VERIFIED WITH THE APPROPRIATE UTILITY COMPANY AND/OR MUNICIPAL DEPARTMENT PRIOR TO FINAL DESIGN AND/OR CONSTRUCTION.
4. LOCATION OF FLOODWALL AND LEVEE BASELINES SHOWN ARE APPROXIMATE AND ARE BASED UPON PLANS PREPARED BY THE U.S. ARMY CORPS OF ENGINEERS FOR CHICOPEE RIVER FLOOD CONTROL DATED APRIL, 1963. NO MONUMENTATION OF BASELINES WAS FOUND AND IS HISTORICAL ONLY.
5. TOP CONCRETE FLOODWALL AND CENTERLINE LEVEE GRADES IN BOLD TYPE ARE FIELD LOCATED BY SURVEY AND ARE NOT THE RESULT OF AERIAL MAPPING. REFER TO LEGEND FOR AERIAL SPOT HEIGHT INDICATORS.

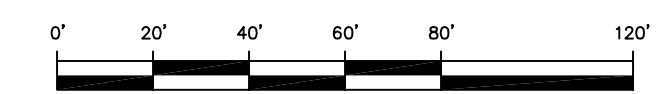
NORTH AMERICAN VERTICAL DATUM 1988

NOTE: FOR THIS FLOOD CONTROL SYSTEM, ELEVATIONS IN NGVD29 CAN BE OBTAINED BY ADDING 0.70 FEET TO THE ELEVATIONS SHOWN ON THIS PLAN.

**CHICOPEE FLOOD CONTROL WORKS**  
**CHICOPEE FALLS SYSTEM SHEET 4 OF 5**

TOPOGRAPHIC PLAN OF LAND IN  
CHICOPEE, MASSACHUSETTS  
SURVEYED FOR  
THE CITY OF CHICOPEE

SCALE: 1" = 40'



DATE: DECEMBER 12, 2009

**HERITAGE SURVEYS, INC.**  
REGISTERED PROFESSIONAL LAND SURVEYORS  
COLLEGE HIGHWAY & CLARK STREET  
POST OFFICE BOX 1  
SOUTHAMPTON, MASSACHUSETTS  
(413) 527-3600