



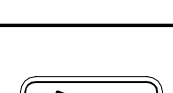


N/F
PARKS THOMAS L & YVETTE L
2 BEACON RD - MILTON, NH
ASSESS. MAP 12 - PARCEL ID: 12-035
DEED BK 555 / PAGE 103

LIMIT OF WORK
STA 10+25
N2936760.5486
E822411.6876

- NOTES:
- HIGH INTENSITY ENCAPSULATED LENS REFLECTIVE SHEETING CONFORMING TO SECTION M9:30.0, TYPE III OR IV, OF THE MASSDOT STANDARD SPECIFICATIONS SHALL BE USED FOR ALL SIGNS.
 - ALL P5 POSTS SHALL BE TELESCOPIC, RECTANGULAR TYPE POSTS, CONFORMING TO THE DIMENSIONS AND REQUIREMENTS OF THE MASSDOT "STANDARD DRAWINGS FOR SIGNS AND SUPPORTS" (LATEST EDITION).

IDENTIFICATION NUMBER	SIZE OF SIGN		TEXT	DIMENSIONS (in)			NUMBER OF SIGNS REQUIRED	COLOR			POST SIZE AND NUMBER REQUIRED	UNIT AREA IN SQUARE FEET	AREA IN SQUARE FEET
	WIDTH	HEIGHT		LETTER HEIGHT	VERTICAL SPACING	ARROW		BACK-GROUND	LEGEND	BORDER			
R3-17	24 in	18 in		SEE 2009 MUTCD STANDARDS			18	WHITE	BLACK	BLACK	P-5 18	3.0	54.0
R3-17bP	24 in	8 in					1	WHITE	BLACK	BLACK	MOUNT W/ R3-17	1.4	1.4
W11-2	30 in	30 in					36"	YELLOW	BLACK	BLACK	P-5 19	6.25	225.0
W16-7PL	24 in	12 in					18"	YELLOW	BLACK	BLACK	MOUNT W/ W11-2	2.0	36.0
W16-7PR	24 in	12 in					18"	YELLOW	BLACK	BLACK	MOUNT W/ W11-2	2.0	36.0

* INCLUDES SIGNS FOR PROPOSED CROSSWALK AT INTERSECTION OF NANTASKET AVE AND GALLOPS HILL RD (NOT SHOWN ON THE PLANS)

6/20/2019 3:24 PM C:\2019\5273 - HULL - ROADWAY MAINTENANCE\DRAWING FILES\PLAN SET\PLAN 2018-REV 3 - SIGNS.DWG (MADOT-D.STB)

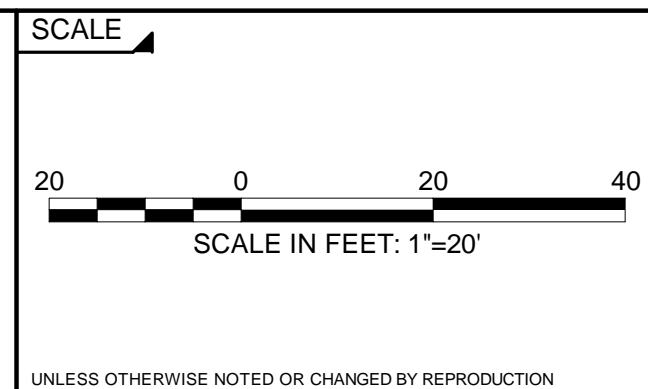
NUMBER	DATE	MADE BY	CHECKED BY	REVISIONS

DRAWN BY:
DESIGNED BY:
CHECKED BY:

REGISTERED PROFESSIONAL
For Review Only

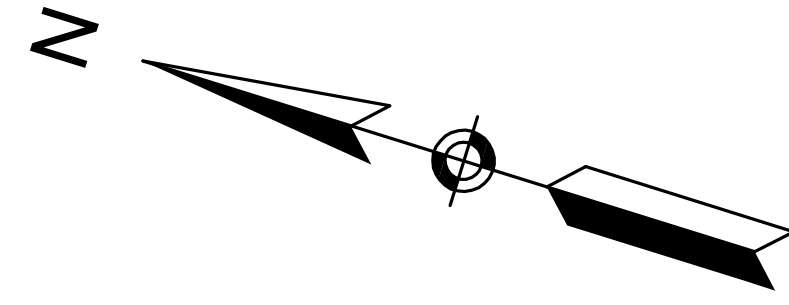


SUBCONSULTANT



TITLE
NANTASKET AVE ROADWAY IMPROVEMENTS
TOWN OF HULL, MA

BETA JOB NO. 5273
ISSUE DATE 6/20/2019 3:24 PM
SHEET NO. **1 OF 6**



V STREET

V STREET

U STREET

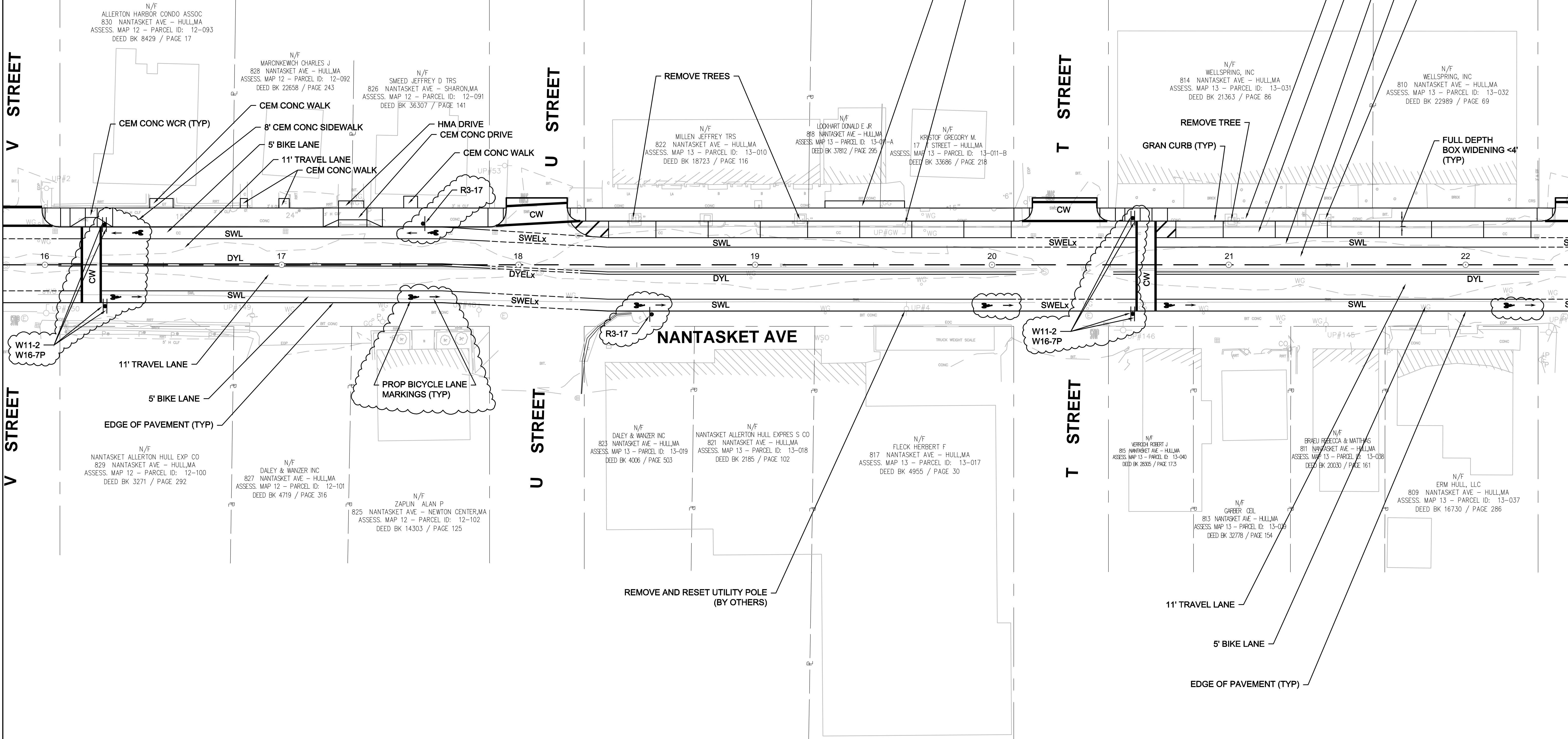
U STREET

T STREET

T STREET

S STREET

S STREET



6/20/2019 3:28 PM C:\E20055273 - HULL - ROADWAY MAINTENANCEDRAWING FILES\PLAN SET\PLAN2018-REV.3 - SIGNS.DWG (MADOT-D.STB)

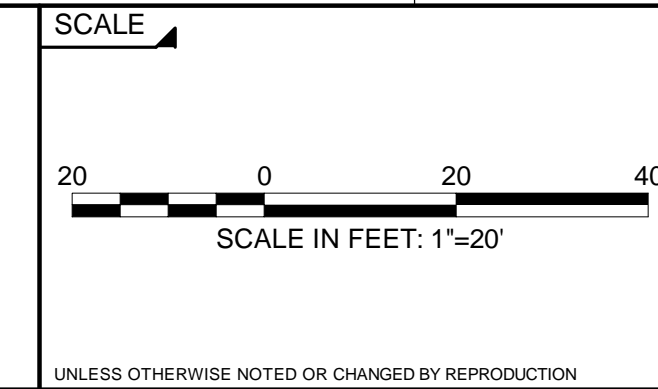
NUMBER	DATE	MADE BY	CHECKED BY	REVISIONS

DRAWN BY:
DESIGNED BY:
CHECKED BY:

REGISTERED PROFESSIONAL
For Review Only

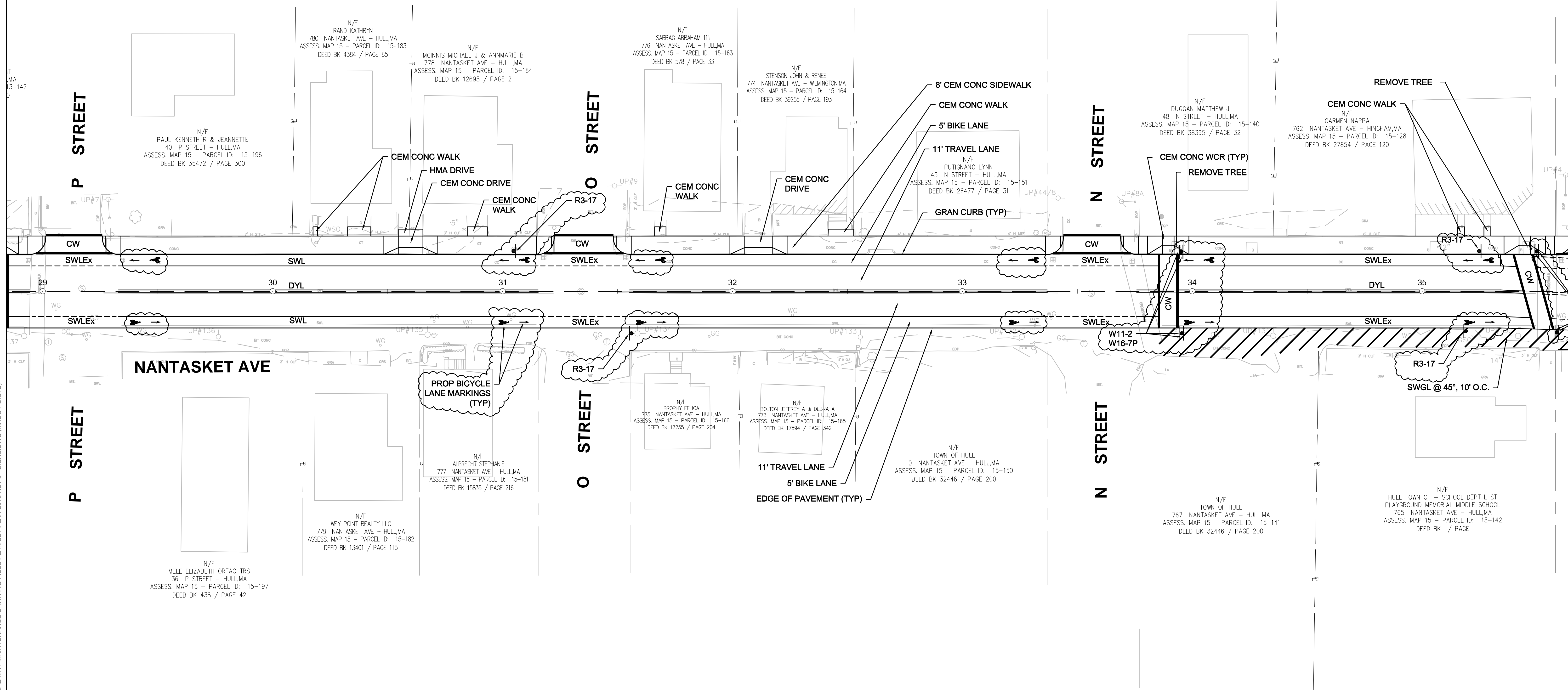
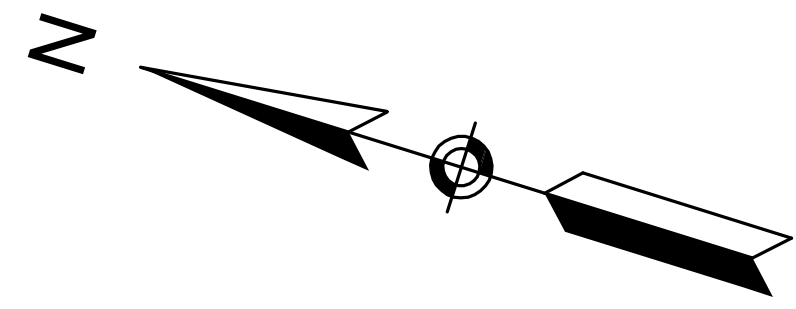


SUBCONSULTANT



TITLE
NANTASKET AVE ROADWAY IMPROVEMENTS
TOWN OF HULL, MA

BETA JOB NO. 5273
ISSUE DATE 6/20/2019 3:24 PM
SHEET NO. **2 OF 6**



6/20/2019 3:31 PM C:\5200555273 - HULL - ROADWAY MAINTENANCE\DRAWING FILES\PLAN SET\PLAN 2018-REV 3 - SIGNS.DWG (MADOT-D.STB)

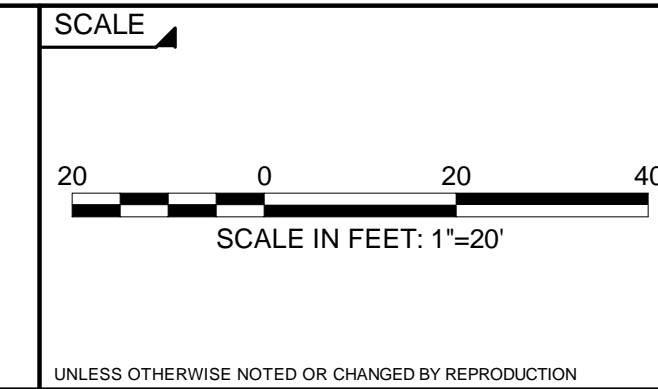
NUMBER	DATE	MADE BY	CHECKED BY	REVISIONS

DRAWN BY:
DESIGNED BY:
CHECKED BY:

REGISTERED PROFESSIONAL
For Review Only



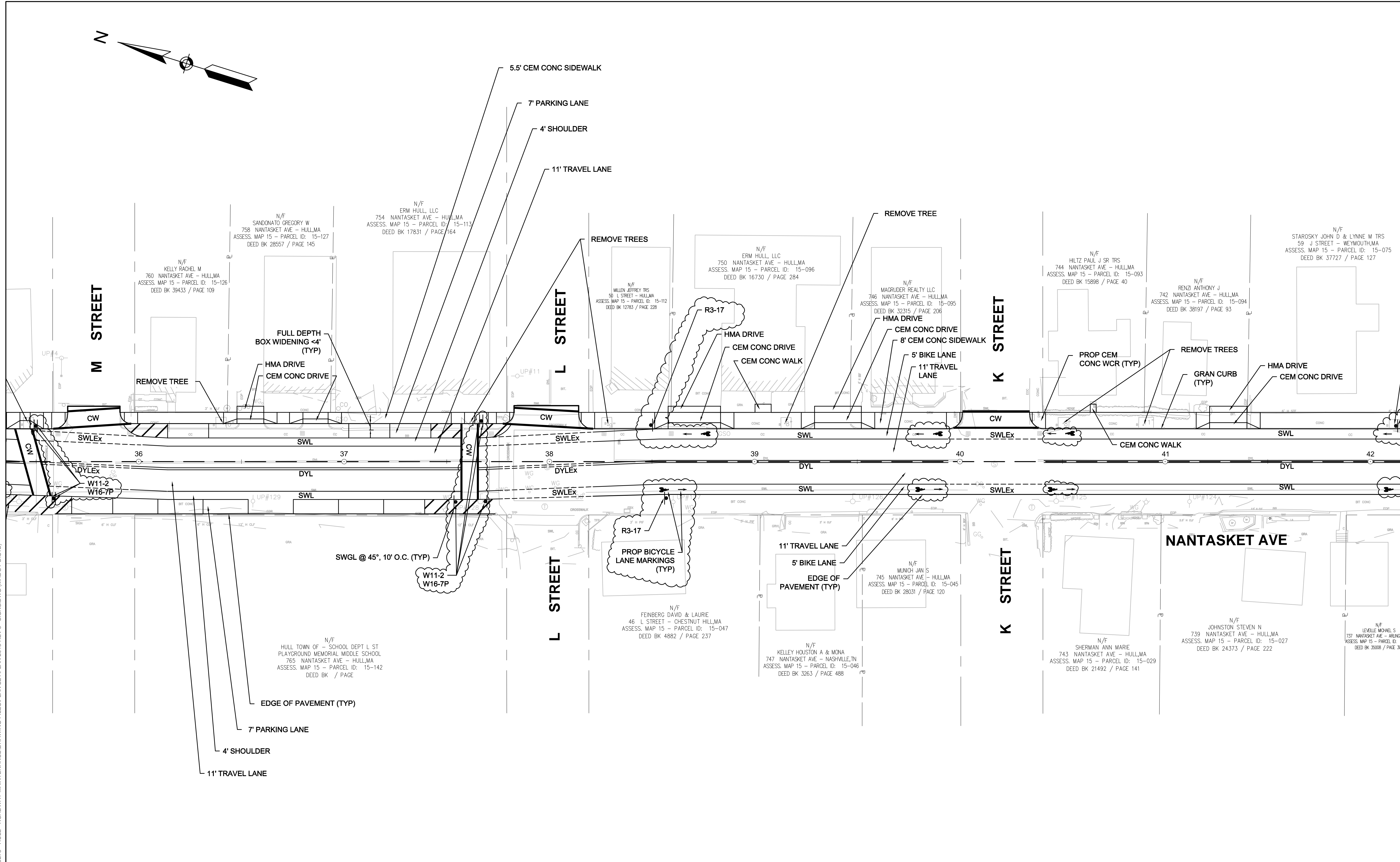
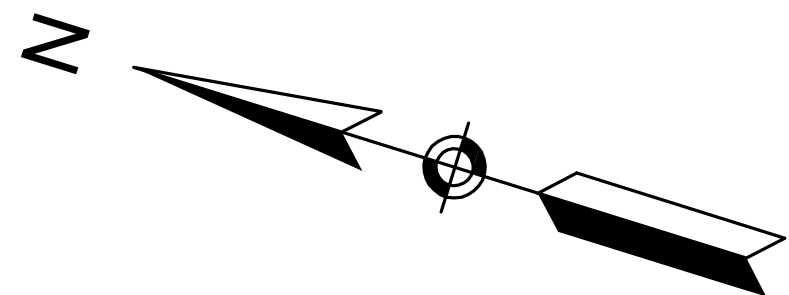
SUBCONSULTANT



TITLE
**NANTASKET AVE ROADWAY IMPROVEMENTS
TOWN OF HULL, MA**

BETA JOB NO. 5273
ISSUE DATE 6/20/2019 3:24 PM
SHEET NO. **4 OF 6**

UNLESS OTHERWISE NOTED OR CHANGED BY REPRODUCTION



6/20/2019 3:32 PM C:\E20055273 - HULL - ROADWAY MAINTENANCE\DRAWING FILES\PLAN SET\PLAN 2018\REV 3 - SIGNS.DWG (MADOT-D.STB)

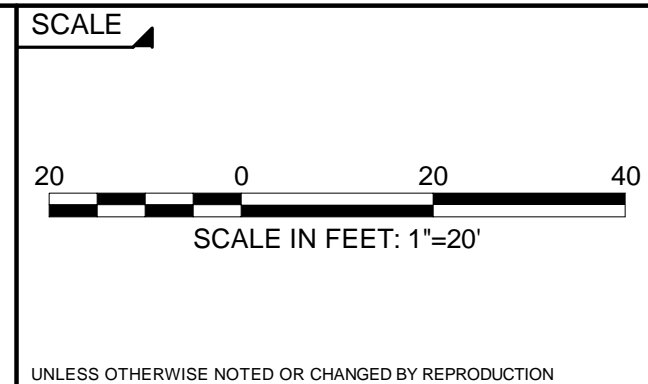
NUMBER	DATE	MADE BY	CHECKED BY	REVISIONS

DRAWN BY:
DESIGNED BY:
CHECKED BY:

REGISTERED PROFESSIONAL
For Review Only



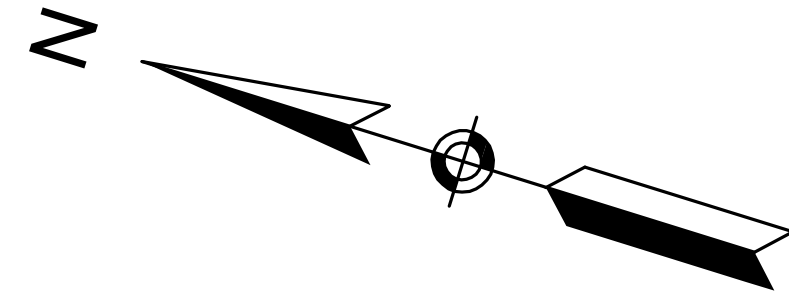
SUBCONSULTANT



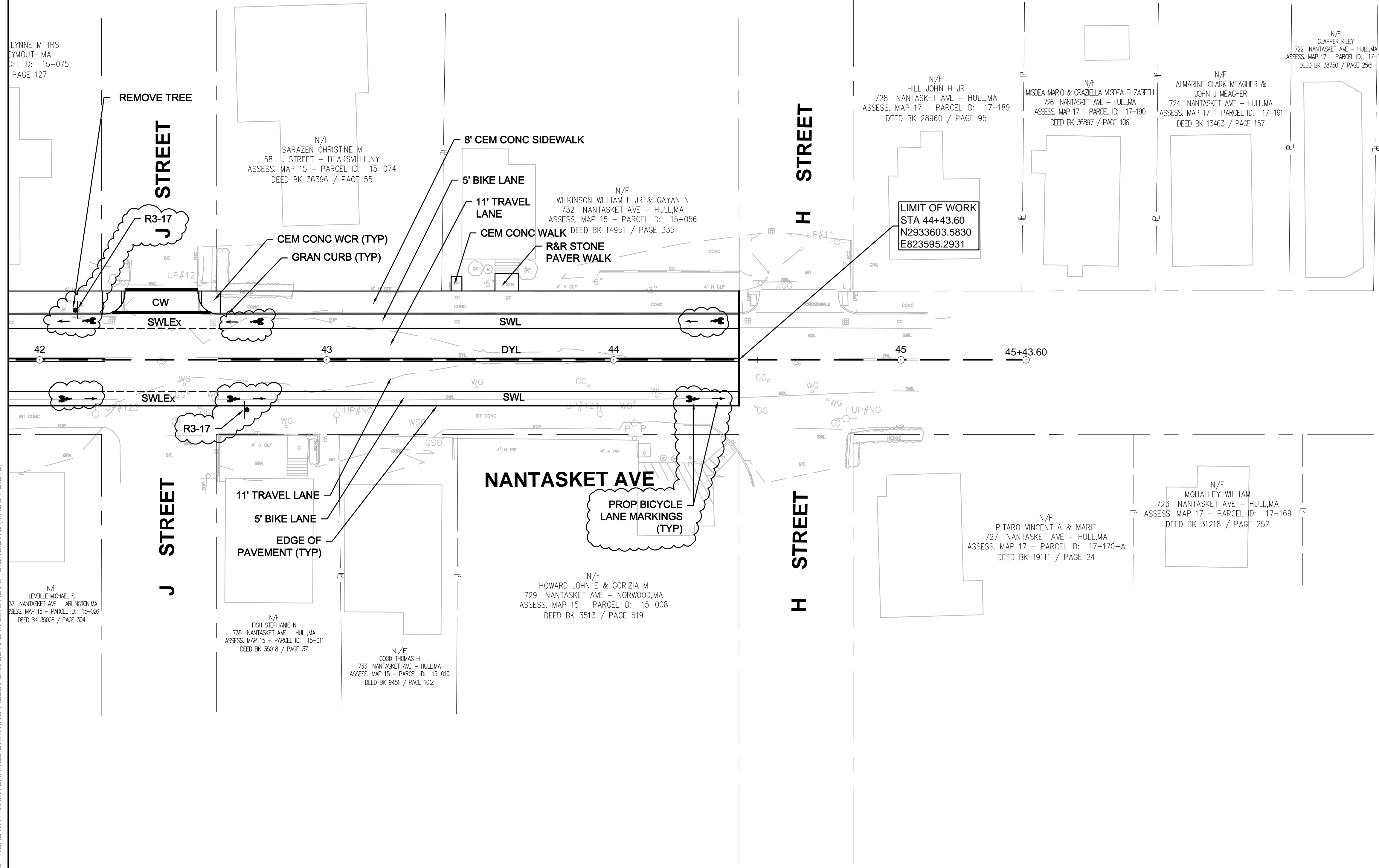
TITLE

**NANTASKET AVE ROADWAY IMPROVEMENTS
TOWN OF HULL, MA**

BETA JOB NO. 5273
ISSUE DATE 6/20/2019 3:24 PM
SHEET NO. **5 OF 6**



LYNNE M TRS
 FIMOUTH, MA
 DEL ID: 15-075
 PAGE 127



6/20/2019 3:33 PM C:\5200555273 - HULL - ROADWAY MAINTENANCE\DRAWING FILES\PLAN SET\PLAN 2018-REV 3 - SIGNS.DWG (MADOT-D.STB)

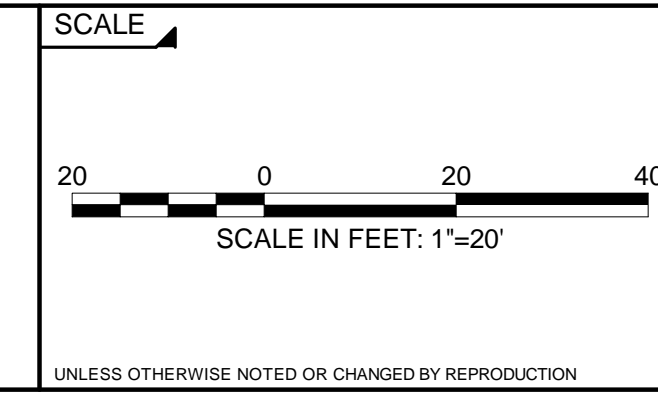
NUMBER	DATE	MADE BY	CHECKED BY	REVISIONS

DRAWN BY:
 DESIGNED BY:
 CHECKED BY:

REGISTERED PROFESSIONAL
For Review Only



SUBCONSULTANT



TITLE
**NANTASKET AVE ROADWAY IMPROVEMENTS
 TOWN OF HULL, MA**

BETA JOB NO. 5273
 ISSUE DATE 6/20/2019 3:24 PM
 SHEET NO. **6 OF 6**

UNLESS OTHERWISE NOTED OR CHANGED BY REPRODUCTION