

SHOP DRAWING REVIEW FORM AND TRANSMITTAL

DATE: November 4, 2021

TO: Carl Hendrickson
Project Manager
Veolia Water
825 West Water Street
Taunton, MA 02780

FROM: Michael Andrus, P.E.
Project Manager
BETA Group, Inc.
701 George Washington Hwy
Lincoln, Rhode Island 02865

RE: City of Taunton, MA
WWTF Phase 1 Improvements
Contract S-2021-1

Shop Drawing No. 03200-03 – REV 0 – Retaining Wall Rebar

BETA COMMENTS:

<u>Item</u>	<u>Action Code</u>	<u>Description/Comments</u>
1	2	Retaining Wall Rebar (Harris Rebar) 1. Confirm that this product is compliant with American Iron and Steel requirements.

Action Codes

- 1 - No Exception Taken
- 2 - Make Corrections Noted
- 3 - Amend and Resubmit
- 4 - Rejected, See Remarks

- a. Installation shall proceed only when Action Code is '1' or '2'.
- b. Submittals action coded '3' shall be resubmitted within time limit set in Contract.
- c. Review does not relieve Contractor from responsibility of compliance with the Contract Documents.



Hart Engineering Corporation

SUBMITTAL:
03200-03

PROJECT: 9900. - Veolia/Taunton WWTF Phase 1 Improvements

DATE: 10/13/2021

SUBMITTAL: 03200-03 - Retaining Wall Rebar
REVISION: 0
STATUS: Eng
SPEC #: 03200

TO:
Michael Andrus
Beta Group Inc.
6 Blackstone Place
Lincoln, RI 02865
MAndrus@BETA-Inc.com

FROM:
Ryan Murphy
Hart Engineering Corporation
800 Scenic View Drive
Cumberland, RI 02864
rmurphy@hartcompanies.com

Item	Revision	Description	Status	Date Sent	Date Returned
03200-03	0	Retaining Wall Rebar	Eng	10/13/2021	
Notes:					

SHOP DRAWING REVIEW

1 – Approved
 2 – Approved as Noted

3 – Revise and Resubmit
 4 - Rejected

5 – Record File Only – No Action Taken

(Above Check Designates Action Code – See Review Comments)

IMPORTANT NOTE FOR CONTRACTOR

Review is only for general compliance with the design concept and information provided in Contract Documents. Corrections and comments made on the Shop Drawings during review do not relieve the Contractor from compliance with the requirements of the plans and specifications. Review and/or approval of a specific item shall not include review or approval of an assembly of which the item is a component. No approval or correction of a Shop Drawing shall be construed as an order for extra work. The Contractor is responsible for: all quantities and dimensions to be confirmed and correlated; information that pertains solely to the fabrication processes or to the means, methods, techniques, sequences and procedures of construction; coordination of the Work with that of all trades and subcontractors; and performing all Work in a safe and satisfactory manner.

BETA GROUP, INC. Checked By: TW

By: DW Date: 11/4/21

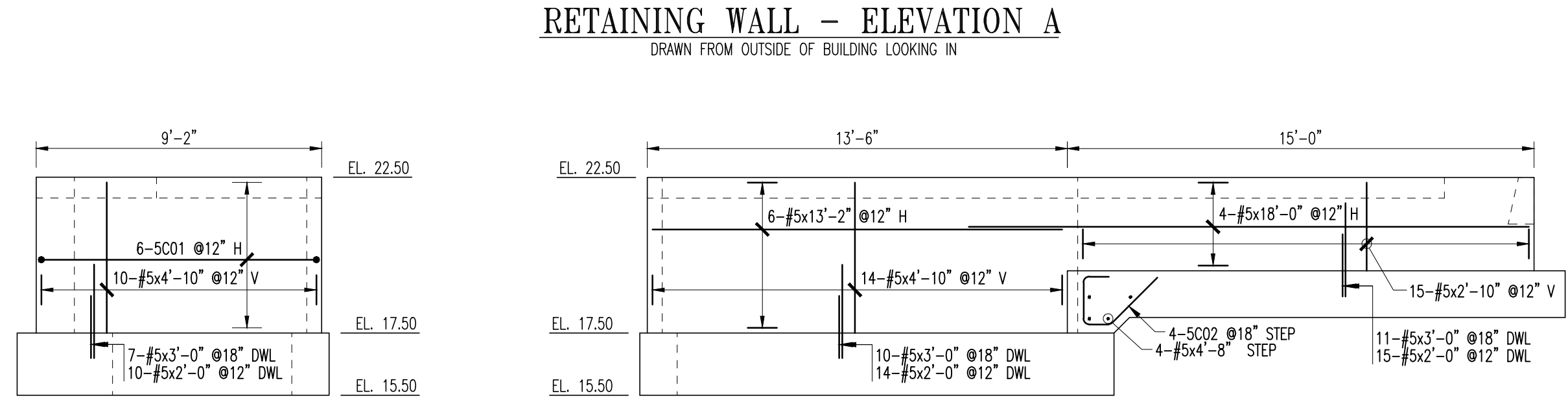
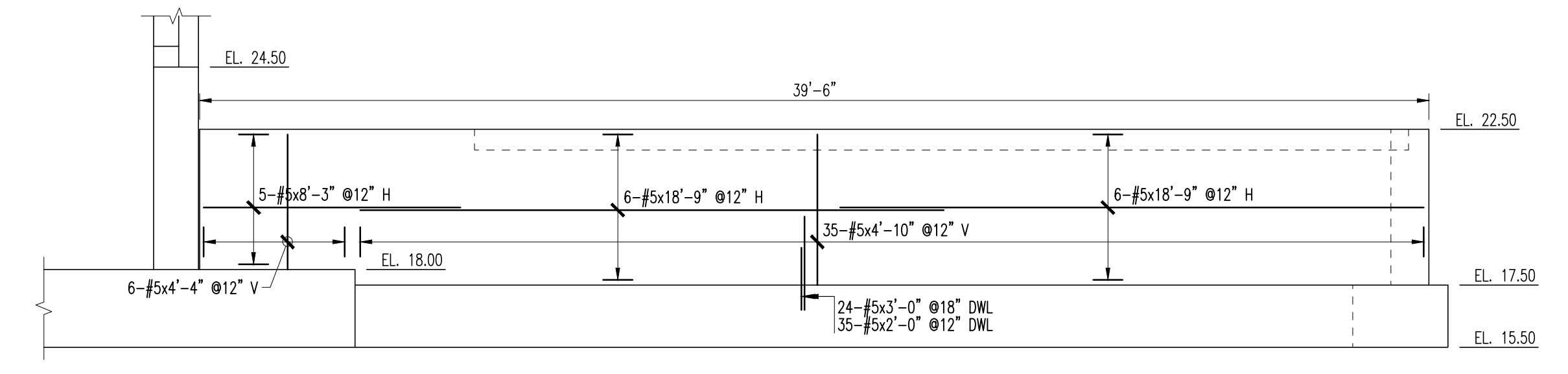
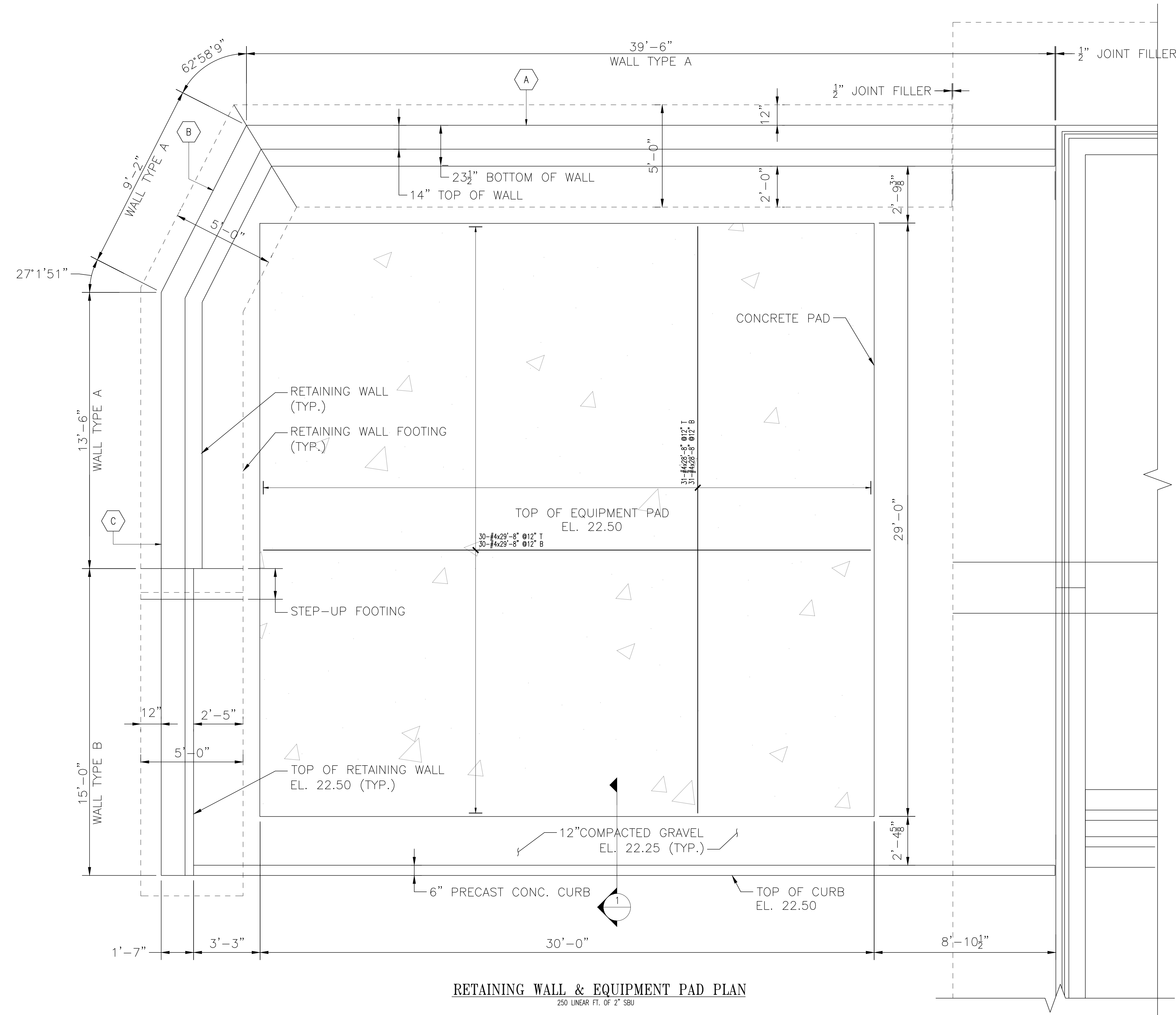
Additional Notes:

Status Codes

- 1-APP – No Exceptions Taken
- 2-ANR – Make Corrections Noted
- 3-R&R – Revise and Resubmit
- 4-REJ – Rejected
- 5-IPO – For Information Purposes Only
- 6-NRR – Not Required for Review
- ENG – Submitted to Engineer

Sincerely,
Hart Engineering Corporation

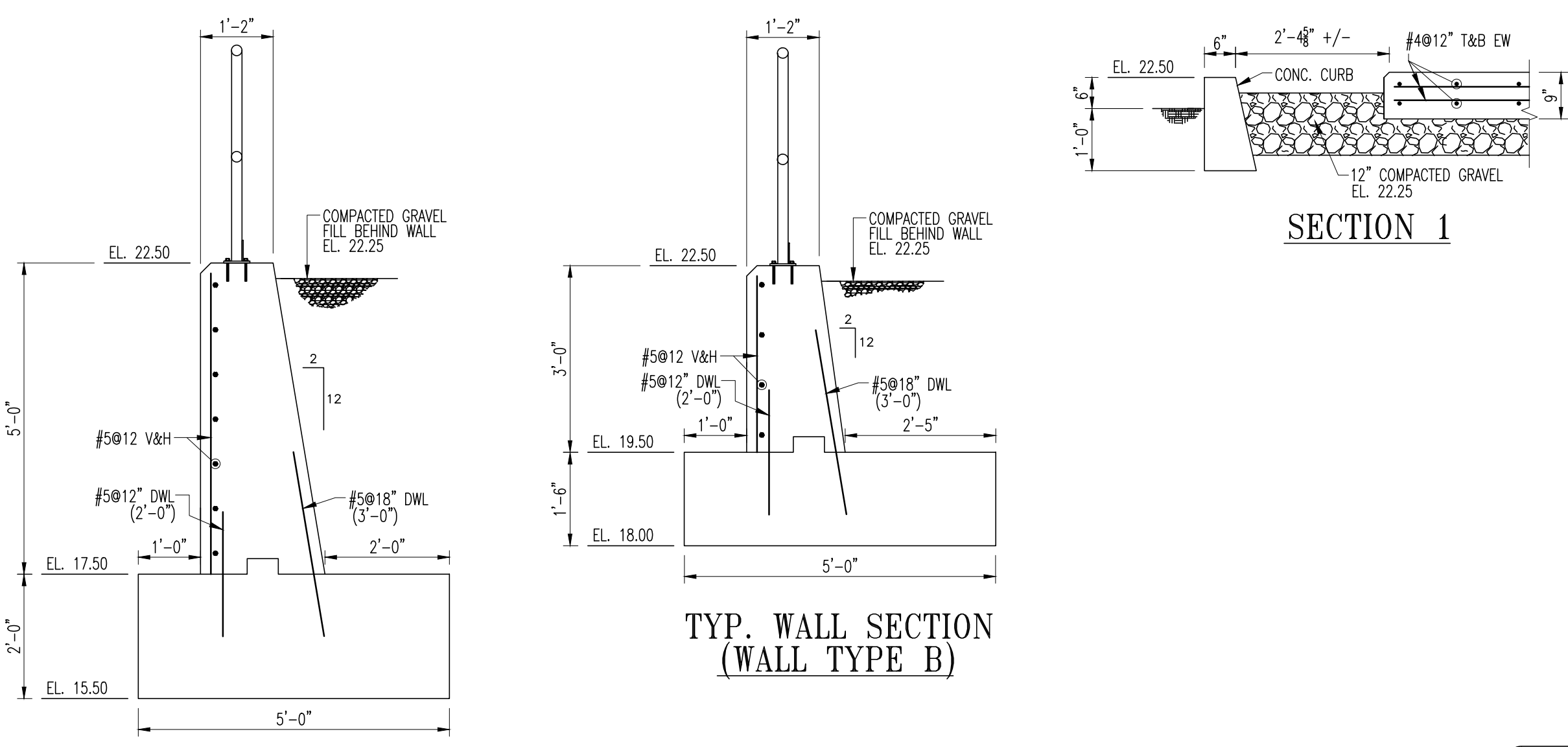
DATE: 10/13/2021



RETAINING WALL - ELEVATION A
DRAWN FROM OUTSIDE OF BUILDING LOOKING IN

RETAINING WALL - ELEVATION B
DRAWN FROM OUTSIDE OF BUILDING LOOKING IN

RETAINING WALL - ELEVATION C
DRAWN FROM OUTSIDE OF BUILDING LOOKING IN



TYP. WALL SECTION (WALL TYPE A)

TYP. WALL SECTION (WALL TYPE B)

SECTION 1

Bar List

Bar	Qty	Size	Length	Type	X	Y	U	V	W	X	Y	U	V	W
S01	4	#5	15'-0"	2	10'	1'-0"	10'	1'-0"	10'	1'-0"	10'	1'-0"	10'	1'-0"
S02	4	#5	5'-5 1/2"	16	10'	1'-0"	10'	1'-0"	10'	1'-0"	10'	1'-0"	10'	1'-0"

5,000 psi LAP CHART

BAR SIZE	LAP CLASS	TOP BARS	OTHER BARS
#3	A	17"	25"
	B	22"	33"
#4	A	22"	33"
	B	29"	43"
#5	A	28"	42"
	B	36"	54"
#6	A	33"	50"
	B	43"	65"
#7	A	49"	73"
	B	63"	94"
#8	A	55"	83"
	B	72"	108"
#9	A	63"	94"
	B	81"	122"
#10	A	70"	105"
	B	91"	137"
#11	A	78"	117"
	B	101"	152"
#14	A	94"	140"
	B	125"	187"

Lap lengths shown are calculated per ACI 318-14, Sections 12.2.2 & 12.15.
 Beams or Columns: Case 1: Concrete cover at least 1.0 db and c/c spacing at least 2.0 db.
 Case 2: Concrete cover less than 1.0 db or c/c spacing less than 2.0 db.
 All others: Case 1: Concrete cover at least 1.0 db and c/c spacing at least 3.0 db.
 Case 2: Concrete cover less than 1.0 db or c/c spacing less than 3.0 db.
 Top bars are horizontal bars with more than 12" (300mm) of concrete cast below the bars.

Please provide an AIS (American Iron and Steel) Certificate.

SHOP DRAWING REVIEW

1 - Approved
 2 - Approved as Noted
 3 - Revise and Resubmit
 4 - Rejected
 5 - Record File Only - No Action Taken

(Above Check Designates Action Code - See Remark/Comments)

REVIEWED BY: [Signature]

Review is only for general compliance with the design concept and information provided in Contract Documents. Corrections and comments made on the Shop Drawings during review do not release the Contractor from compliance with the requirements of the plans and specifications. Review and/or approval of a specific item shall not include review or approval of an assembly of which the item is a component. No approval or correction of a Shop Drawing shall be construed as an order for extra work. The Contractor is responsible for all quantities and dimensions to be confirmed and correlated; information that pertains solely to the fabrication processes or to the means, methods, techniques, sequences and procedures of construction; coordination of the Work with that of all trades and subcontractors; and performing all Work in a safe and satisfactory manner.

BETA GROUP, INC. Checked By: TW
 By: DW Date: 11/04/21

ENG. AND ARCH. PLEASE VERIFY ALL CLOUDED AREAS

USE THIS DRAWING IN CONJUNCTION WITH ARCHITECTS AND ENGINEERS DRAWINGS

ALL MATERIAL ON THIS DRAWING SHALL BE ASTM A615 GRADE 60 U.N.O.

ALL REINFORCING IS TO BE PLACED IN ACCORDANCE WITH CONCRETE REINFORCING STEEL INSTITUTE (CRSI) MANUAL OF STANDARD PRACTICE.

0 SENT FOR APPROVAL 10/13/21 KML

No. Description Date By

Revisions and Issue Record

The full intent and purpose of this drawing is the placing of reinforcing steel bars ONLY. It is NOT to be used as a means of communication between the Architect, Engineer, Contractor or any other Sub-trades.

THIS DRAWING IS NOT TO BE SCALED.

HarrisRebar
 Rebar Steel
 National Strength. Local Service.

DETAILED AT:
 FAWTUCKET
 RHODE ISLAND

Project: WITF TAUNTON
 TAUNTON, MA

Drawing: RETAINING WALL AND EQUIPMENT PAD

Customer: HART ENGINEERING
 Engineer: BETA INC.

Refer to Release:

Date	Drawn	Chkd.	JOB No.	Dwg. No.
10/11/21	KML		34015329	RW-01

\\prowlucket\data\Departments\Detailing\Witf - Engineering - WITF - Taunton\Taunton\Drawings\DWGs (RW-01.dwg)