

SHOP DRAWING REVIEW FORM AND TRANSMITTAL

DATE: November 19, 2021

TO: Carl Hendrickson
Project Manager
Veolia Water
825 West Water Street
Taunton, MA 02780

FROM: Michael Andrus, P.E.
Project Manager
BETA Group, Inc.
701 George Washington Hwy
Lincoln, Rhode Island 02865

RE: City of Taunton, MA
WWTF Phase 1 Improvements
Contract S-2021-1

Shop Drawing No. 03200-07 Headworks Rebar

BETA COMMENTS:

<u>Item</u>	<u>Action Code</u>	<u>Description/Comments</u>
1	2	Please include AIS Cert. Footing depth correct as shown at 2'-0".

Action Codes

- 1 - No Exception Taken
- 2 - Make Corrections Noted
- 3 - Amend and Resubmit
- 4 - Rejected, See Remarks

- a. Installation shall proceed only when Action Code is '1' or '2'.
- b. Submittals action coded '3' shall be resubmitted within time limit set in Contract.
- c. Review does not relieve Contractor from responsibility of compliance with the Contract Documents.



PROJECT: 9900. - Veolia/Taunton WWTF Phase 1 Improvements

DATE: 11/12/2021

SUBMITTAL: 03200-07 - Headworks Rebar

REVISION: 0

STATUS: Eng

SPEC #: 03200

TO:
Michael Andrus
 Beta Group Inc.
 6 Blackstone Place
 Lincoln, RI 02865
 MAndrus@BETA-Inc.com

FROM:
Ryan Murphy
 Hart Engineering Corporation
 800 Scenic View Drive
 Cumberland, RI 02864
 rmurphy@hartcompanies.com

Item	Revision	Description	Status	Date Sent	Date Returned
03200-07	0	Headworks Rebar	Eng	11/12/2021	
Notes:					

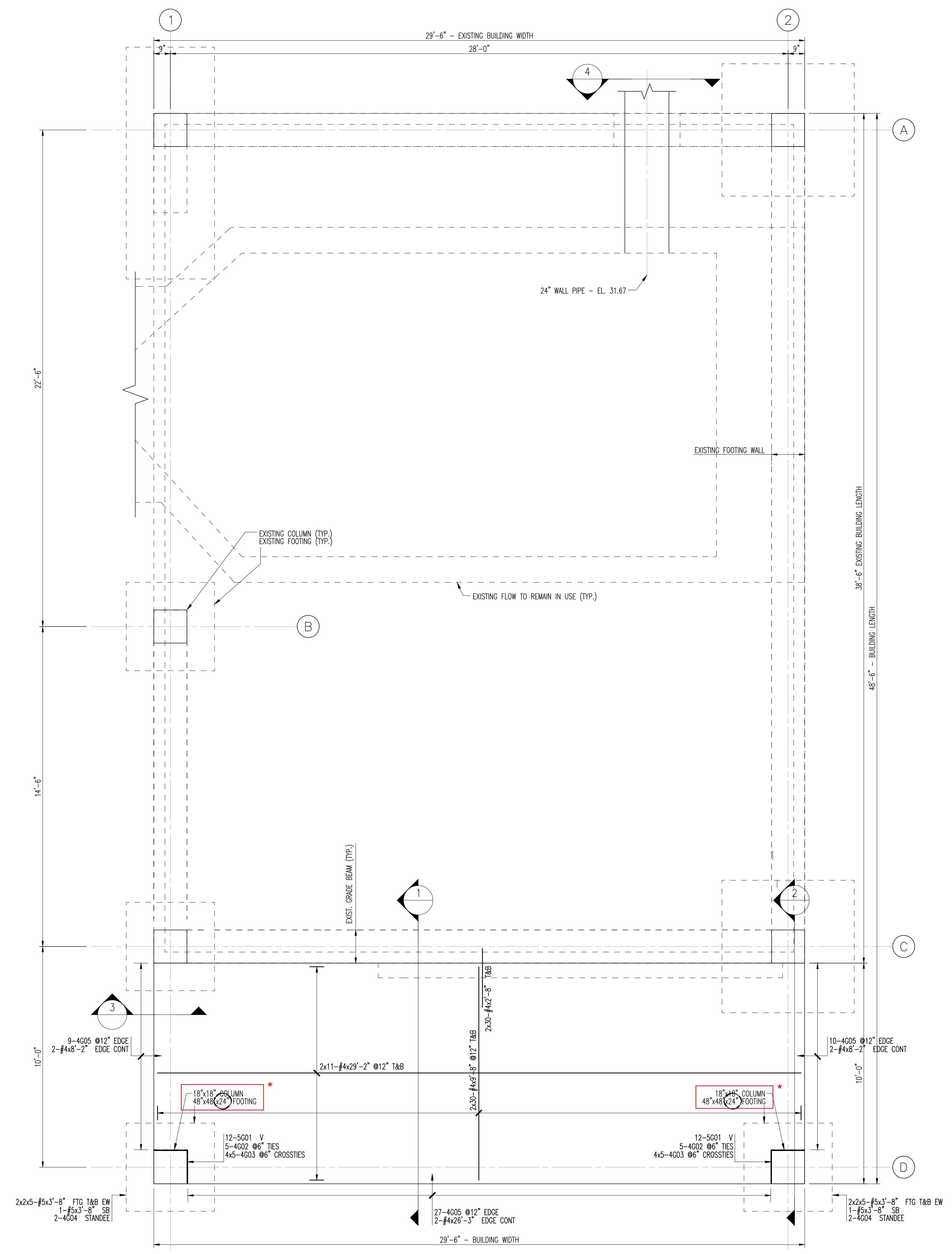
Additional Notes:

Status Codes

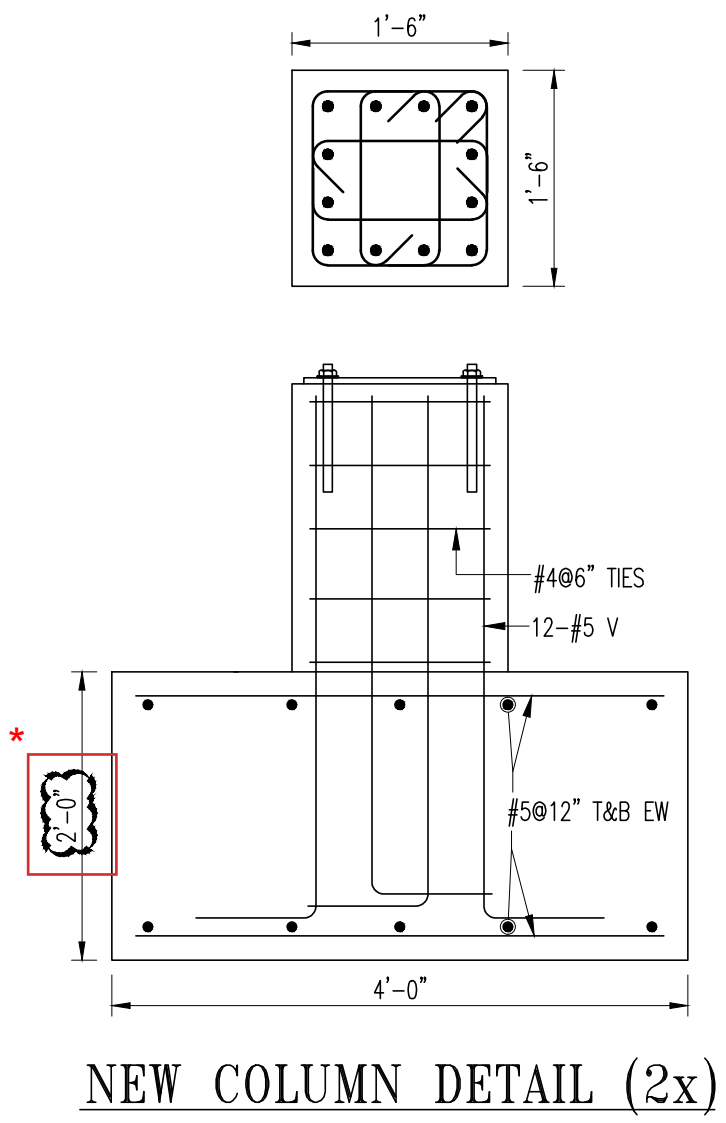
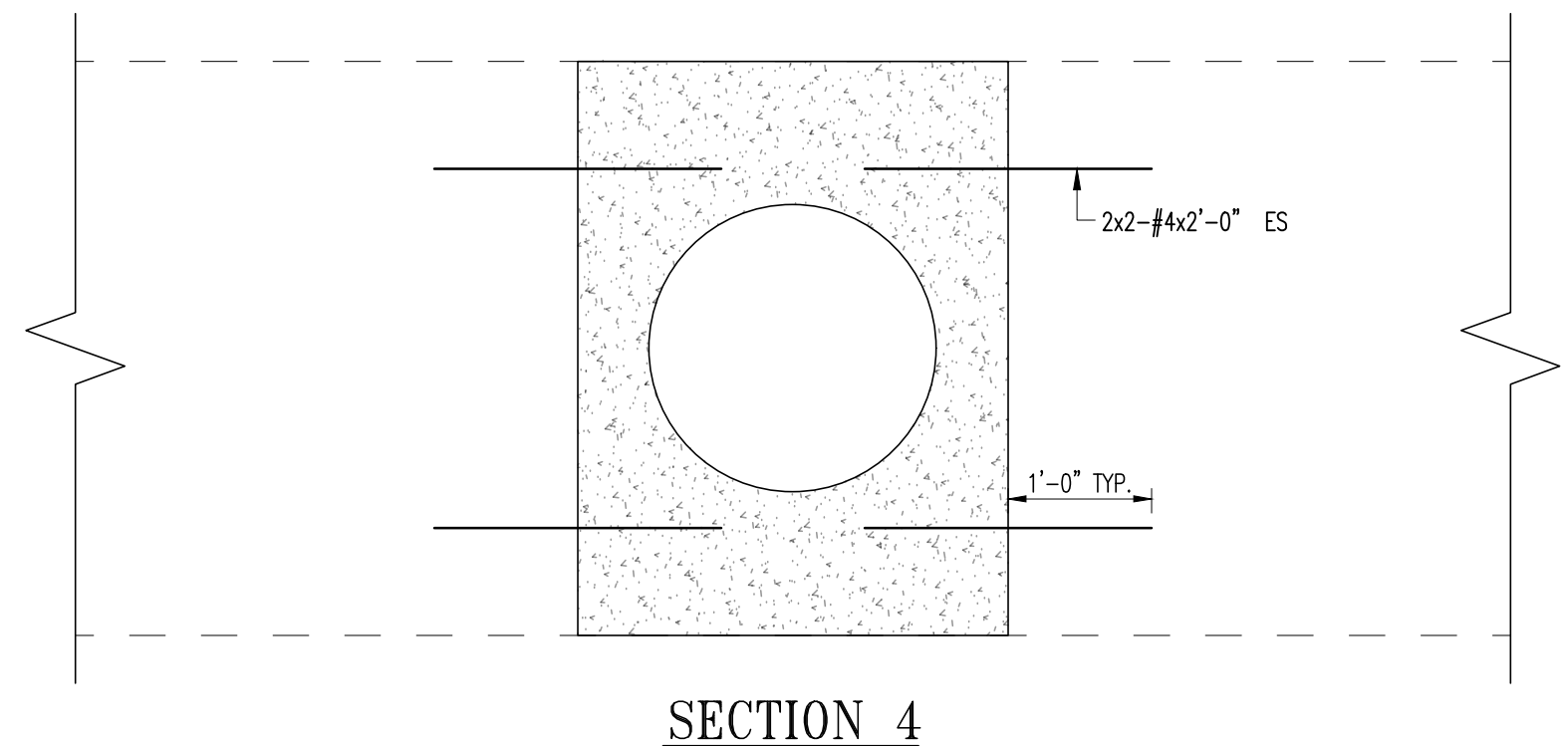
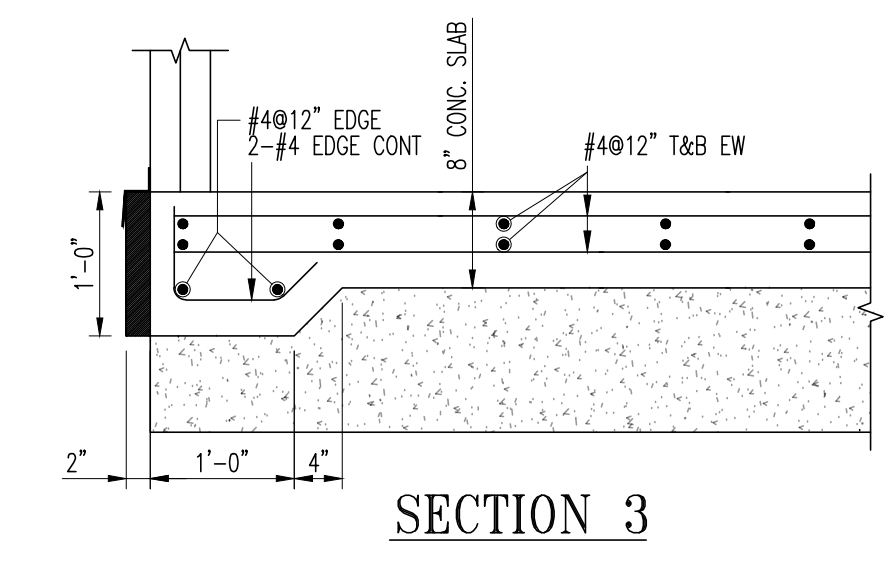
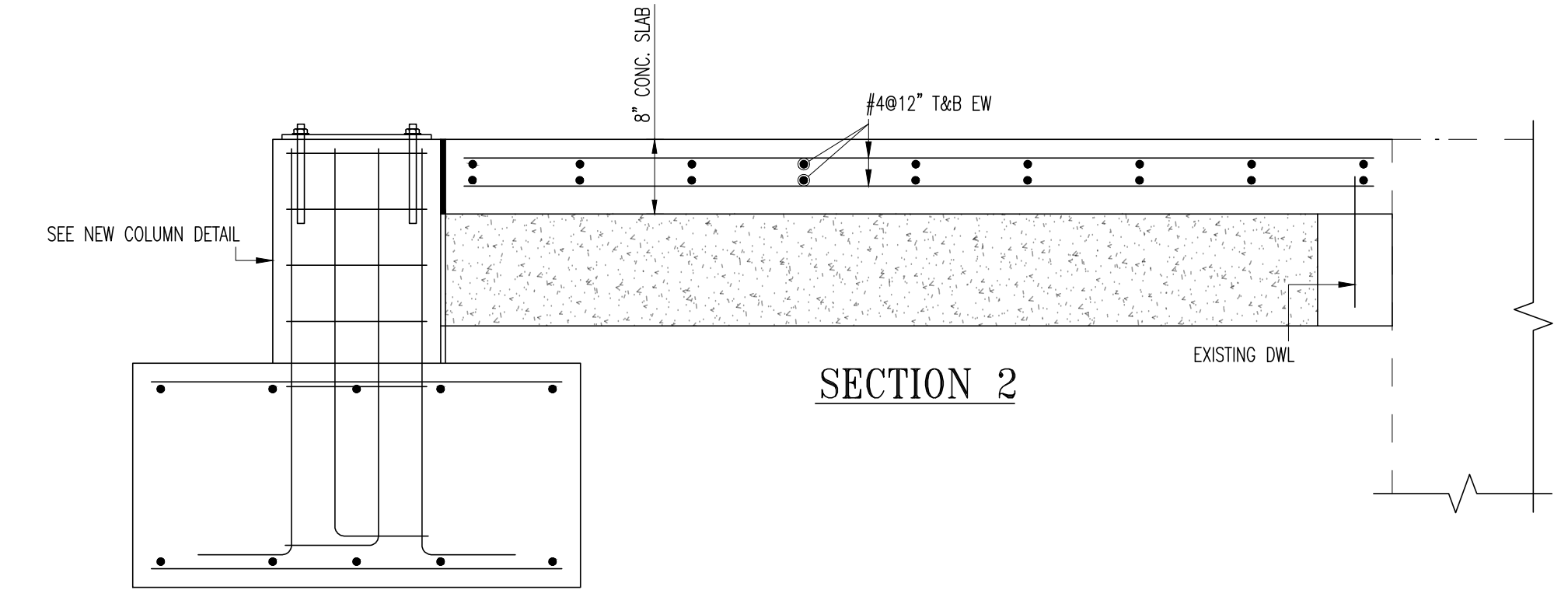
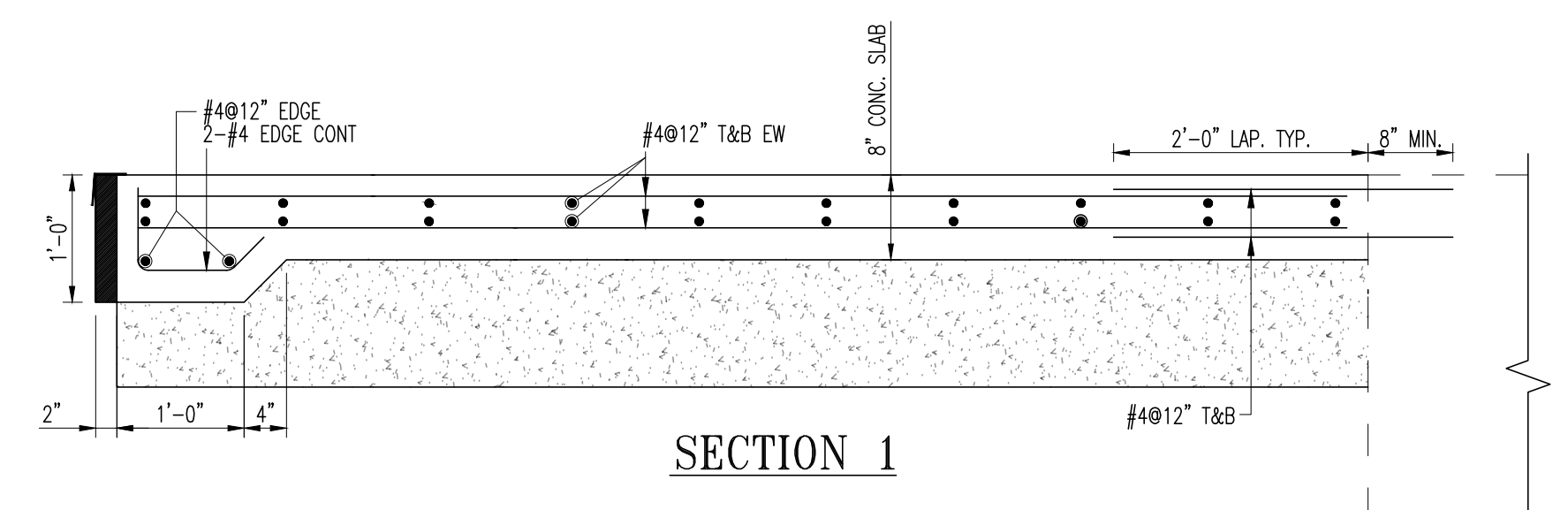
- 1-APP – No Exceptions Taken
- 2-ANR – Make Corrections Noted
- 3-R&R – Revise and Resubmit
- 4-REJ – Rejected
- 5-IPO – For Information Purposes Only
- 6-NRR – Not Required for Review
- ENG – Submitted to Engineer

Sincerely,
 Hart Engineering Corporation

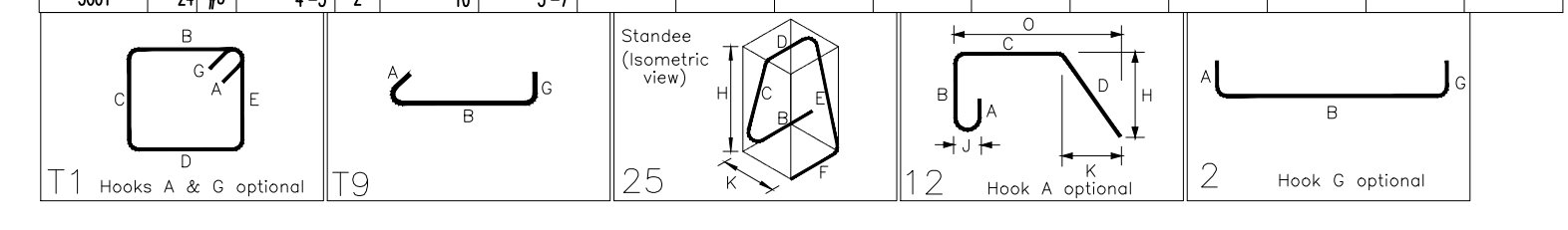
SHOP DRAWING REVIEW	
<input type="checkbox"/> 1 – Approved	<input checked="" type="checkbox"/> 2 – Approved as Noted
<input type="checkbox"/> 3 – Revise and Resubmit	<input type="checkbox"/> 4 – Rejected
<input type="checkbox"/> 5 – Record File Only – No Action Taken	
(Above Check Designates Action Code – See Review Comments)	
IMPORTANT NOTE FOR CONTRACTOR	
Review is only for general compliance with the design concept and information provided in Contract Documents. Corrections and comments made on the Shop Drawings during review do not relieve the Contractor from compliance with the requirements of the plans and specifications. Review and/or approval of a specific item shall not include review or approval of an assembly of which the item is a component. No approval or correction of a Shop Drawing shall be construed as an order for extra work. The Contractor is responsible for: all quantities and dimensions to be confirmed and correlated; information that pertains solely to the fabrication processes or to the means, methods, techniques, sequences and procedures of construction; coordination of the Work with that of all trades and subcontractors; and performing all Work in a safe and satisfactory manner.	
BETA GROUP, INC.	Checked By: <u> TW </u>
By: <u> BN </u>	Date: <u> 11/19/21 </u>



HEADWORKS BLDG - PROPOSED FOUNDATION PLAN
90 LINEAR FT. OF 1" SB



Bar Mark	Qty	Size	Total Length	Type	X	Y	Z	W	V	T	U	V	W	X	Y	Z	W	V	T	U	V	W	X	Y
4022	10	#4	5'-0"	T1	4.8"	1'-3"	1'-3"	1'-3"	1'-3"	4.8"														
4023	40	#4	2'-0"	T8	4.8"	1'-3"	1'-3"	1'-3"	4.8"															
4034	4	#4	6'-0"	T5	1'-3"	1'-3"	1'-3"	1'-3"	1'-3"	1'-3"	1'-3"	1'-3"	1'-3"	1'-3"	1'-3"	1'-3"	1'-3"	1'-3"	1'-3"	1'-3"	1'-3"	1'-3"	1'-3"	1'-3"
4025	46	#4	1'-8.8"	T2	7"	9.8"	4.8"	4.8"	1'-4.8"	8.8"														
5001	24	#5	4'-5"	T	10"	5'-7"																		



SHOP DRAWING REVIEW

1 - Approved 2 - Approved as Noted
 3 - Revise and Resubmit 4 - Rejected
 S - Record File Only - No Action Taken

(Above Check Designates Action Code - See Review Comments)

IMPORTANT NOTE FOR CONTRACTOR

Review is only for general compliance with the design concept and information provided in Contract Documents. Corrections and comments made on the Shop Drawings during review do not relieve the Contractor from compliance with the requirements of the plans and specifications. Review and/or approval of a specific item shall not include review or approval of an assembly of which the item is a component. No approval or correction of a Shop Drawing shall be construed as an order for extra work. The Contractor is responsible for: all quantities and dimensions to be confirmed and correlated; information that pertains solely to the fabrication process or to the means, methods, techniques, sequences and procedures of construction; coordination of the work with that of all trades and subcontractors; and performing all work in a safe and satisfactory manner.

BETA GROUP, INC. Checked By: TW
 By: BN Date: 11/19/21

Please provide AIS (American Iron and Steel) Certificate.

* NOTE: THE CORRECT FOOTING DEPTH IS 2'-0" AS SHOWN HERE. (PLANS HAVE A DISCREPANCY)

ENG. AND ARCH. PLEASE VERIFY ALL CLOUDED AREAS

USE THIS DRAWING IN CONJUNCTION WITH ARCHITECTS AND ENGINEERS DRAWINGS

ALL MATERIAL ON THIS DRAWING SHALL BE ASTM A615 GRADE 60 U.N.O.

ALL REINFORCING IS TO BE PLACED IN ACCORDANCE WITH CONCRETE REINFORCING STEEL INSTITUTE (CRSI) MANUAL OF STANDARD PRACTICE.

THIS DRAWING IS NOT TO BE SCALED.

HarrisRebar
 National Strength. Local Service.

DETAILED AT:
 FAWTUCKET
 RHODE ISLAND

Project: WWTf TAUNTON
 TAUNTON, MA

Drawing: HEADWORKS BUILDING

Customer: HART ENGINEERING
 Engineer: BETA, INC.

Refer to Release:

Date	Drawn	Chkd.	JOB No.	Dwg. No.
11/10/21	KML		34015329	HW-01