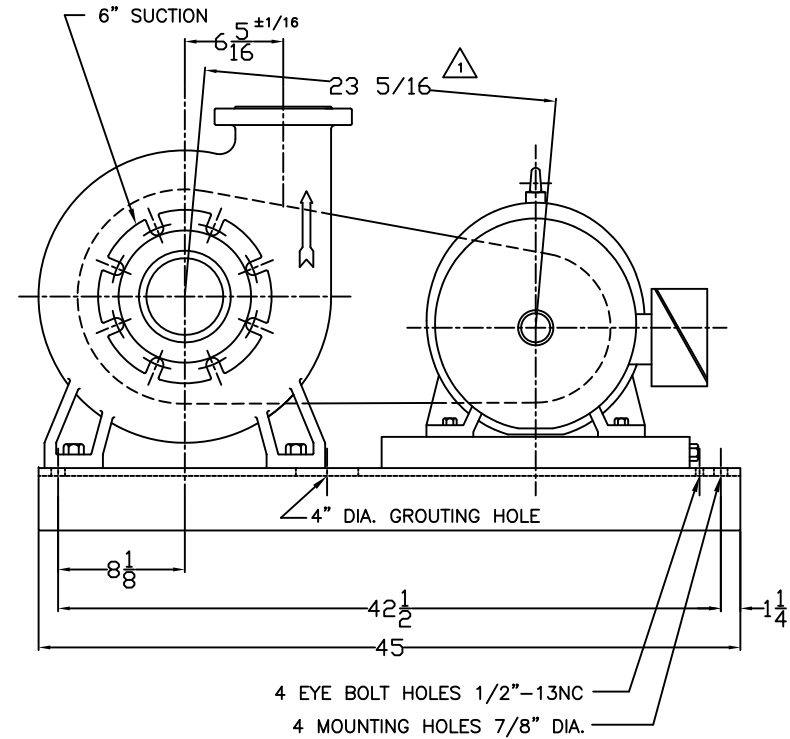
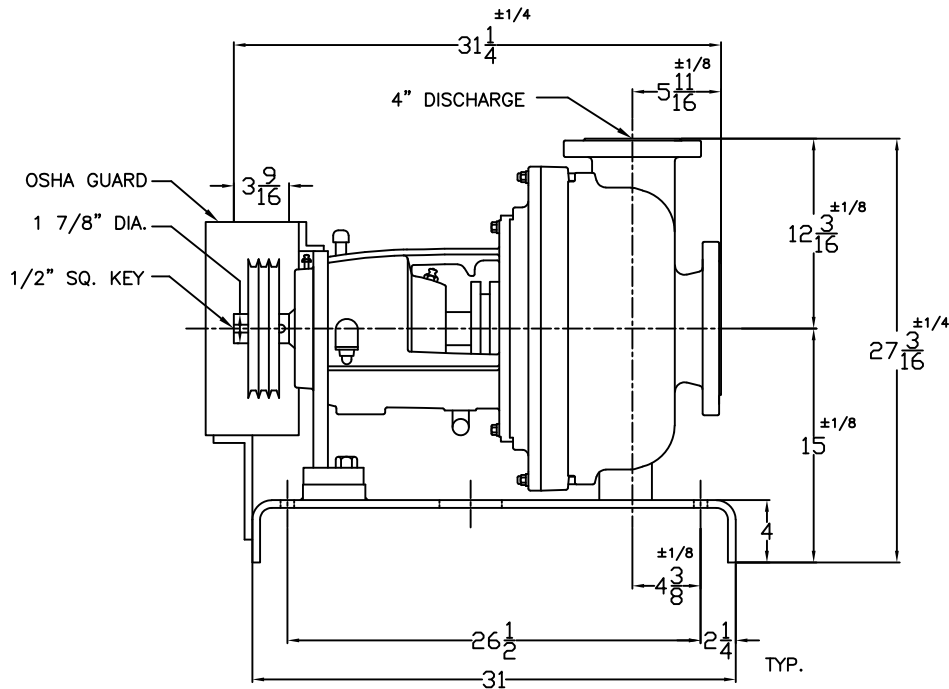


1. SUCTION AND DISCHARGE FLANGES: C.I. AND NI-HARD - 125 lbs R.F. ALLOYS - 150 lbs F.F. ALL FLANGES MATE WITH STD. ASA FLANGES
2. PUMP ROTATION - C.W. VIEWED FROM SHAFT END.
3. TORUS PUMPS SERIES "XR" ARE DIMENSIONALLY INTERCHANGEABLE WITH THE APPLICABLE MODELS SERIES "R".
4. ALL DIMENSIONS ARE IN INCHES. USE FOR INSTALLATION ONLY IF CERTIFIED.
5. FOR NI-HARD AND SUPER NI-HARD CASINGS, FLANGES ARE SUPPLIED AS CAST. SUCTION & DISCHARGE PIPING SHOULD BE FITTED TO THE PUMP FLANGES AFTER THE PUMP IS INSTALLED AND LEVELED. USE 1/8" THICK NEOPRENE GASKETS OF 50 - 60 DUROMETER.

CERTIFIED FOR CONSTRUCTION

DATE _____ SIGNED _____
HAYWARD GORDON LTD.



PUMP:	HAYWARD GORDON TORUS RECESSED IMPELLER PUMP MODEL XR4-12 IN SUPER NI-HARD CONSTR. C/W STD. PACKING BUT SUITABLE FOR CHESTERTON 442 SPLIT SEAL. ALSO OIL LUBRICATED BEARINGS.		
MOTOR:	25 HP, 1800 RPM, 3/60/460V, 284T FR. TYPE TEFC	CAPACITY:	400 USGPM
DRIVE:	WOODS CONSTANT SPEED	HEAD:	50 FT TDH
BASE:	FORMED STEEL CHANNEL	SPEED:	1030 RPM Δ
GUARD:	OSHA STANDARD	LIQUID:	SLUDGE
TOTAL WEIGHT	WITH MOTOR: 1200 LBS	TAG:	PRIMARY SLUDGE PUMPS
	W/O MOTOR: 820 LBS	QUANTITY:	THREE (3)

3			
2			
1	JUNE 1/99	G.S.	1030 RPM & 23 5/16", REF. ECR# 99195.
NO.	DATE	BY	REVISION

5 HAYWARD GORDON LTD.
TORONTO MONTREAL CALGARY VANCOUVER

N.T.S.	SCALE	CUST. P.O. NO.	GENERAL ARRANGEMENT DRAWING FOR: POOLE & KENT-NEW ENGLAND INC -TAUNTON WWTF-
FEB.18,1999	DATE	H.G. JOB NO.	
C.M.	DRN.	DWG. NO.	
		278997G	