

City of Taunton, Massachusetts

Wastewater Treatment Facility Improvements

Solids Handling

75% Design Drawings

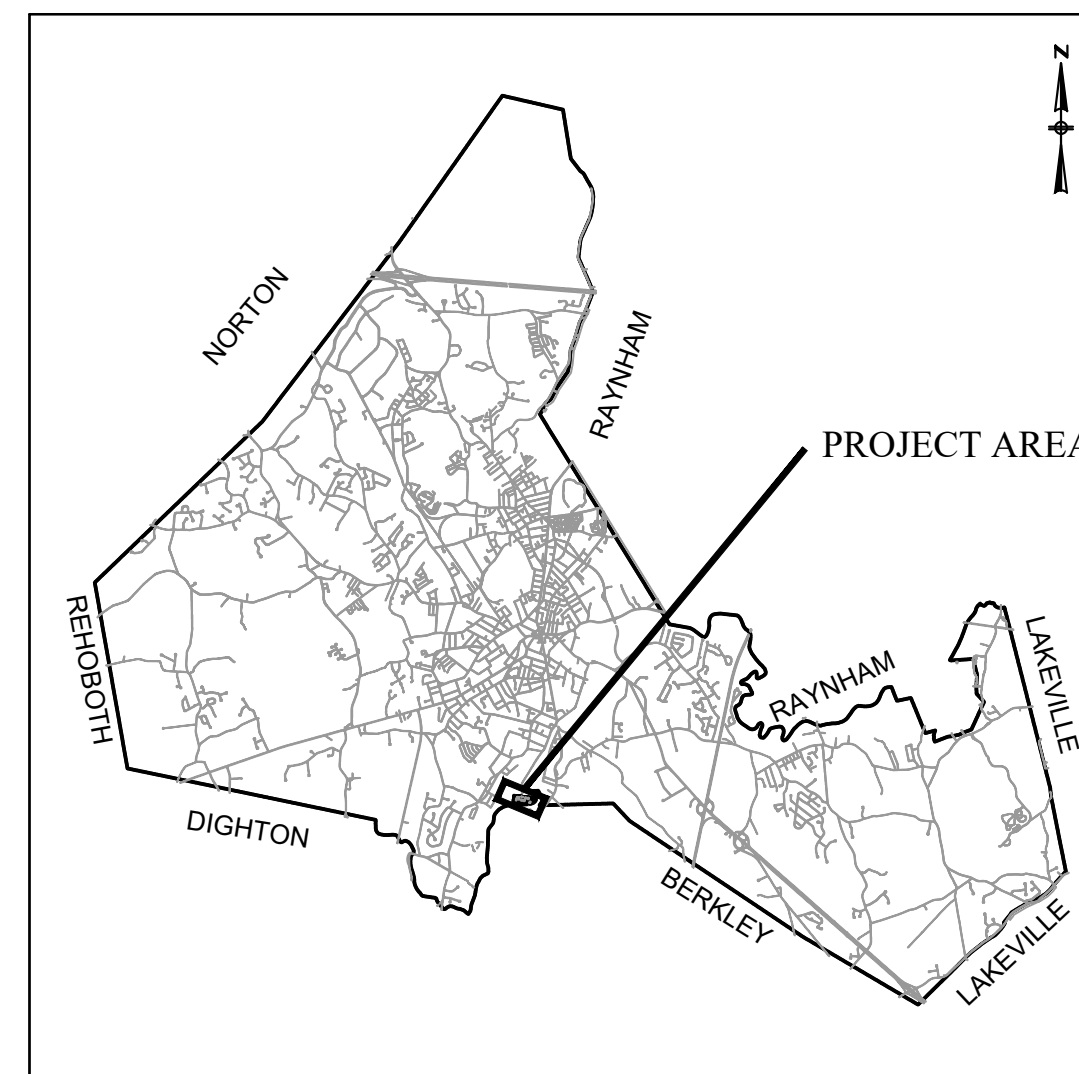


Mayor
Shaunna O'Connell

Department of Public Works
Frederic J. Cornaglia - Commissioner
Anthony Abreau - Assistant Commissioner

City Engineer
Michael Patneau, P.E.

City Council
Estele Borges
Deborah Carr
Donald Cleary
Gerald Croteau
John M. McCaul
Jeff Postell
David W. Pottier
Jeanne Quinn
Barry Sanders



LOCATION MAP
NOT TO SCALE



Project
Location

PROJECT LOCATION

LOCUS MAP
NOT TO SCALE

**PROGRESS DRAWINGS
NOT FOR CONSTRUCTION**

**Contract ---
CWSRF No. ---**

Issue Date:
May, 2020



4/15/2020 12:06 PM W:\YEAR-2018\18009.00 - TAUNTON WWTF UPGRADE\HVAC DEPARTMENT\18009.00 PHASE 1A HVAC LEGEND SCHEDULE AND DETAILS DWG (BETA STB BW) (STB)

GENERAL NOTES

- 1. HVAC WORK IS INDICATED DIAGRAMMATICALLY. EXACT LOCATIONS OF ALL COMPONENTS ARE TO BE DETERMINED IN THE FIELD AND BY THE ACTUAL BUILDING CONDITIONS. EXISTING DUCTS, PIPING OR EQUIPMENT INTERFERING WITH OTHER INSTALLATIONS SHALL BE RELOCATED AS REQUIRED AT NO ADDITIONAL COST TO THE OWNER. EXACT LOCATIONS MUST HAVE THE APPROVAL OF THE ARCHITECT.

DEMOLITION NOTES

- 1. EXISTING WORK INDICATED TO BE DEMOLISHED SHALL BE REMOVED AND DISPOSED OF.

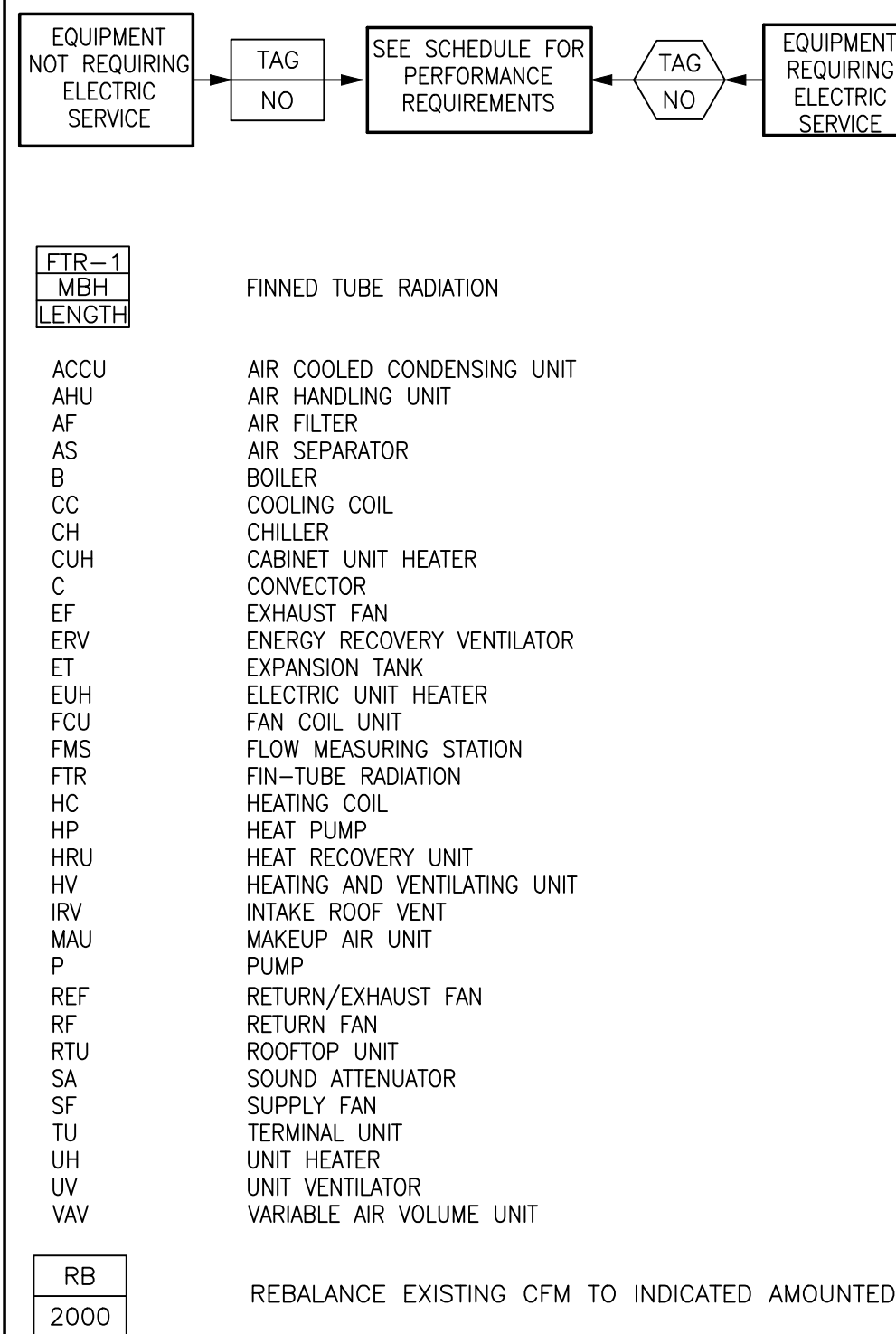
ABBREVIATIONS

Table with 2 columns: Abbreviation and Description. Includes terms like ACD, AD, AFF, AHAP, AP, ARCH, ATC, BDD, BTU, BTUH, BOD, CAP, CD, CFM, CO, CONT, CP, DIA, DB, DC, DDC, DM, DWG, DX, EA, EAT, EBB, ECH, ECON, EF, EFF, ELV, ER, ESP, ETR, EWT, EXH, FA, FD, FLA, FLL, FOB, FOT, FPI, FPM, FT, FTR, GAL, GALV, GC, GF, GPM, HP, HORSEPOWER, HVAC, HORH, HW, HZ, IN, KITCHEN EXHAUST, KW, LAT, LD, LF, LWT, MBH, MCC, NC, NIC, NO, NTS, OA, OAT, OBD, OD, OED, POS, PSI, PD, PRV, PG, R, RA, RB, RF, RC, RM, RPM, RR, S, SA, SAT, SF, SP, SR, SS, STL, TYP, UC, V, VAV, VD, VFD, W/, W/O, WB, WC, WMS.

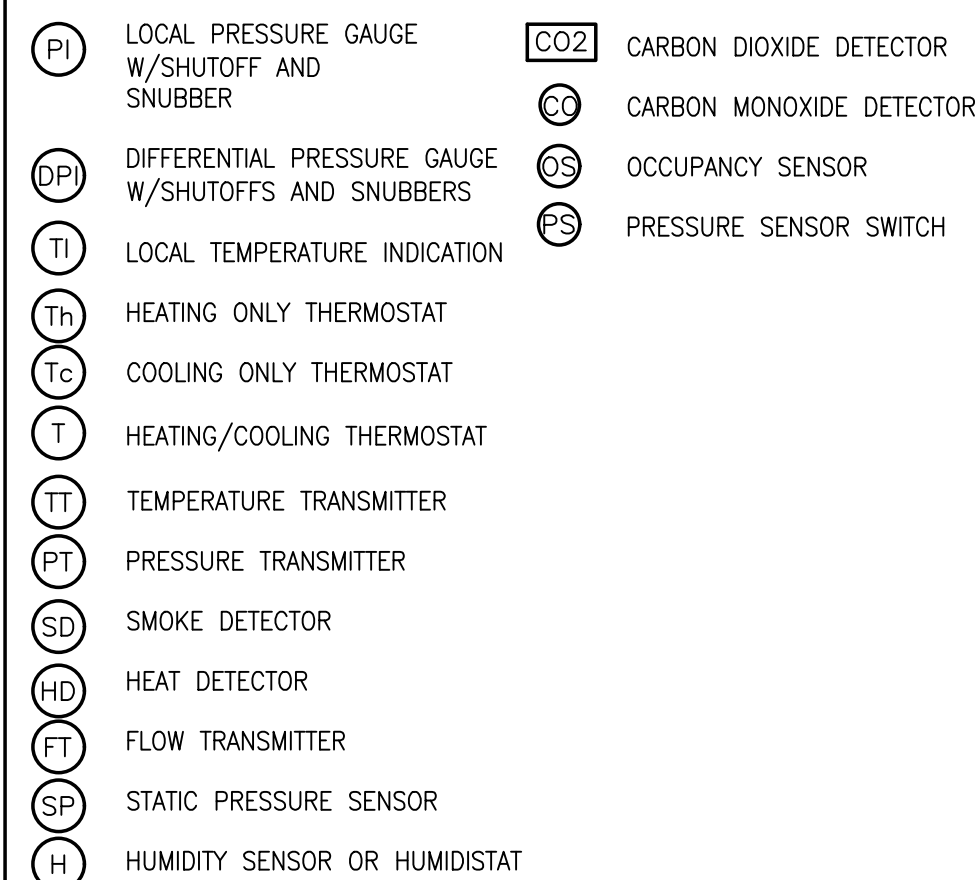
PIPING LEGEND

Table with 2 columns: Symbol and Description. Includes CD (CONDENSATE DRAIN), HWS (HOT WATER SUPPLY), HWR (HOT WATER RETURN), RL (REFRIGERANT LIQUID), RS (REFRIGERANT SUCTION).

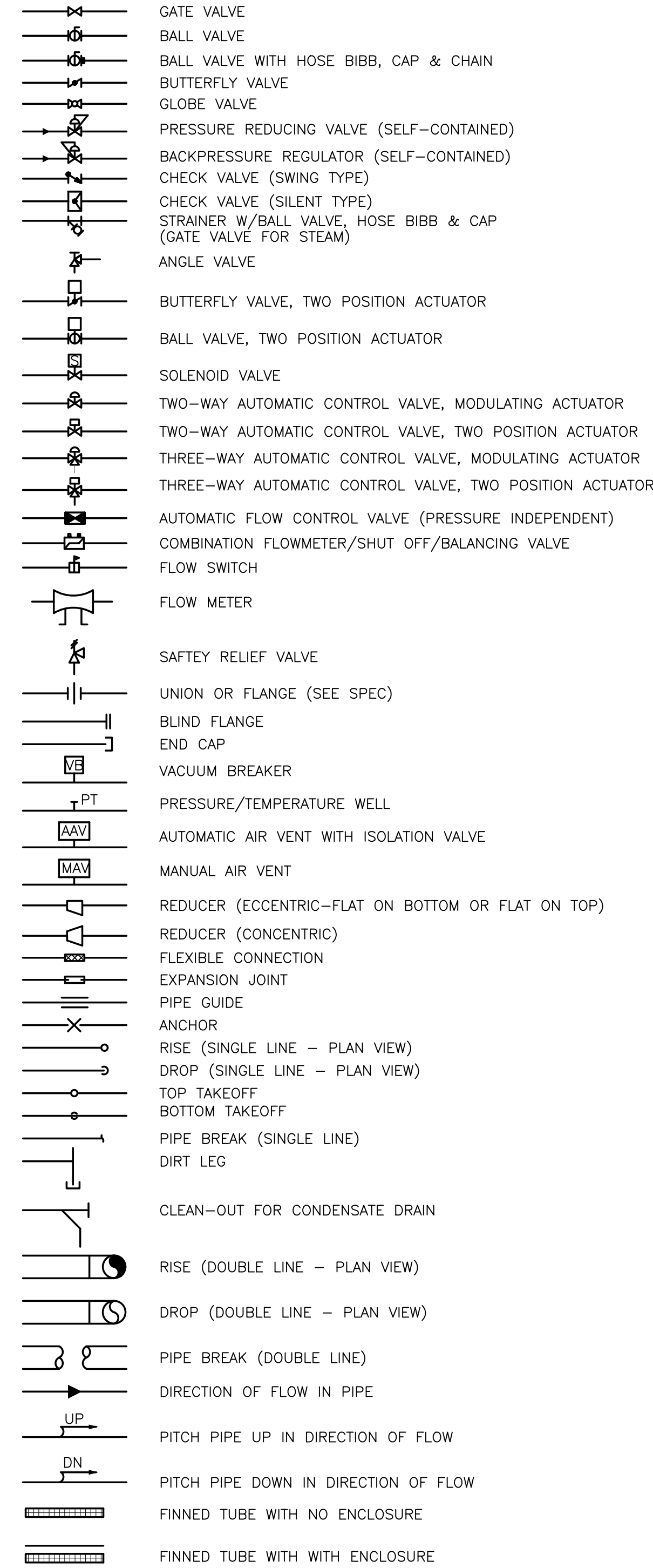
EQUIPMENT TAG SYMBOLS & ABBREVIATIONS



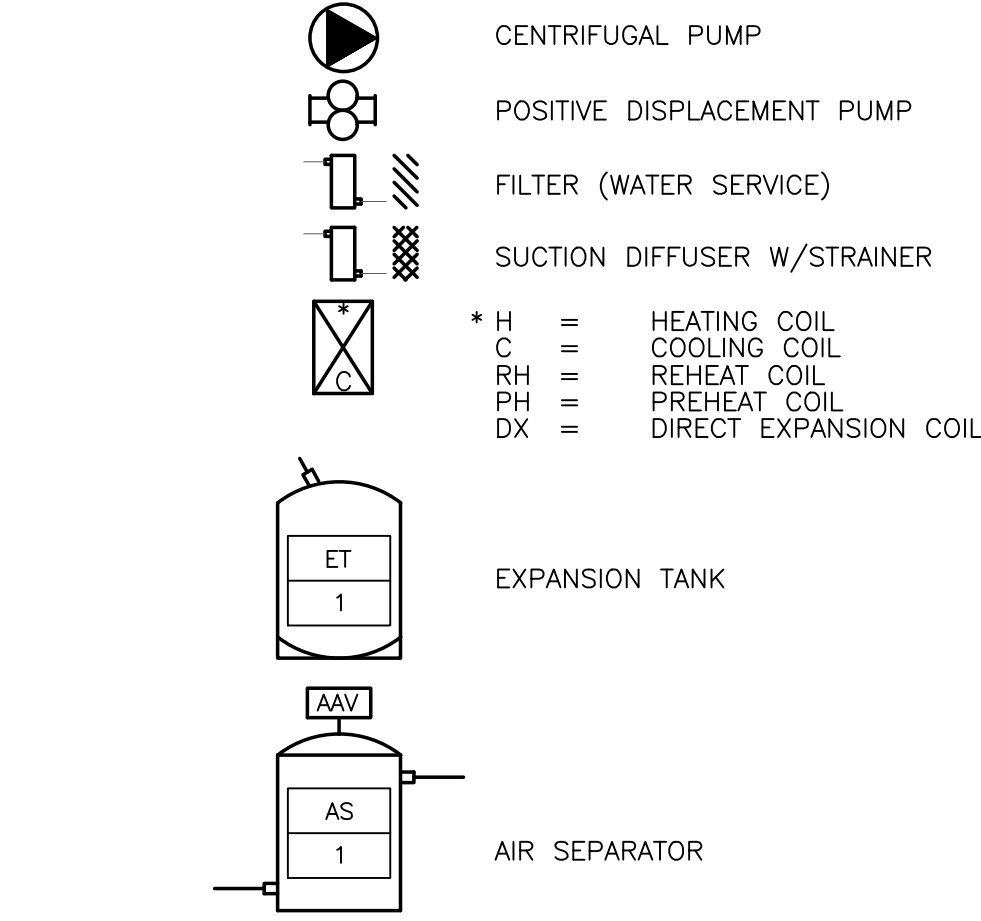
INSTRUMENTATION



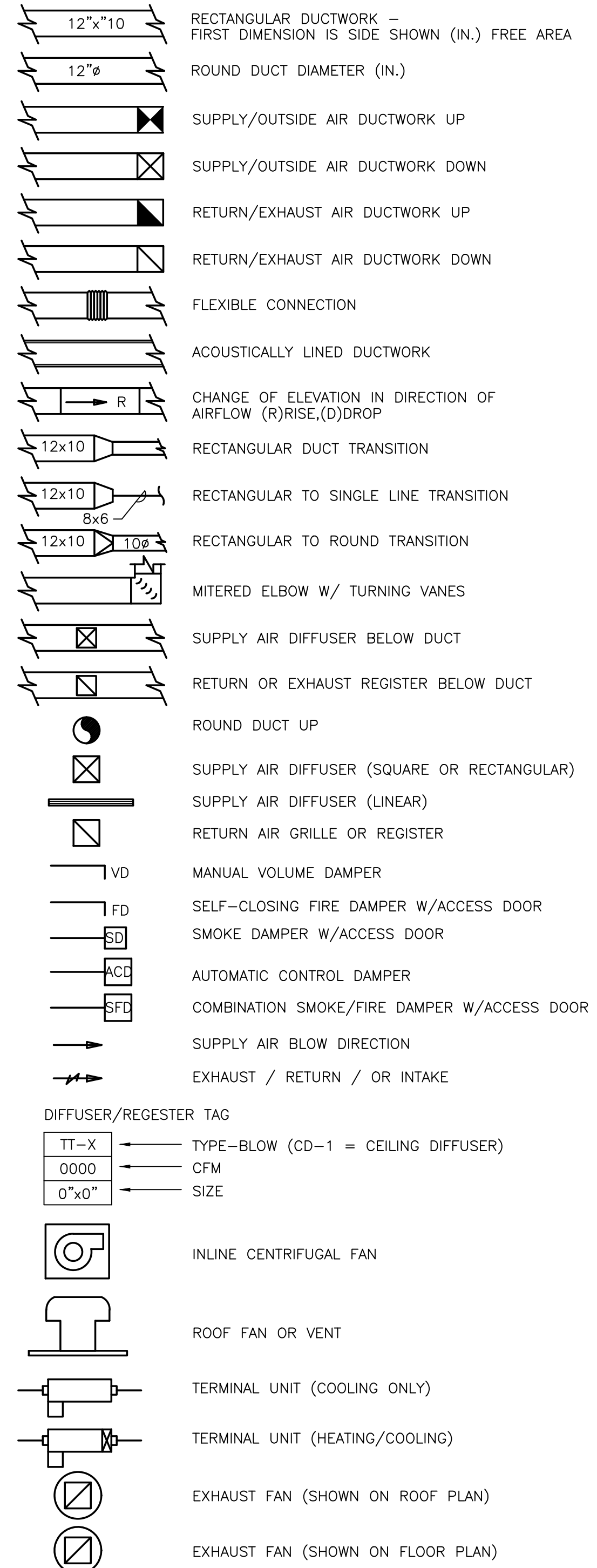
VALVES AND ACCESSORIES



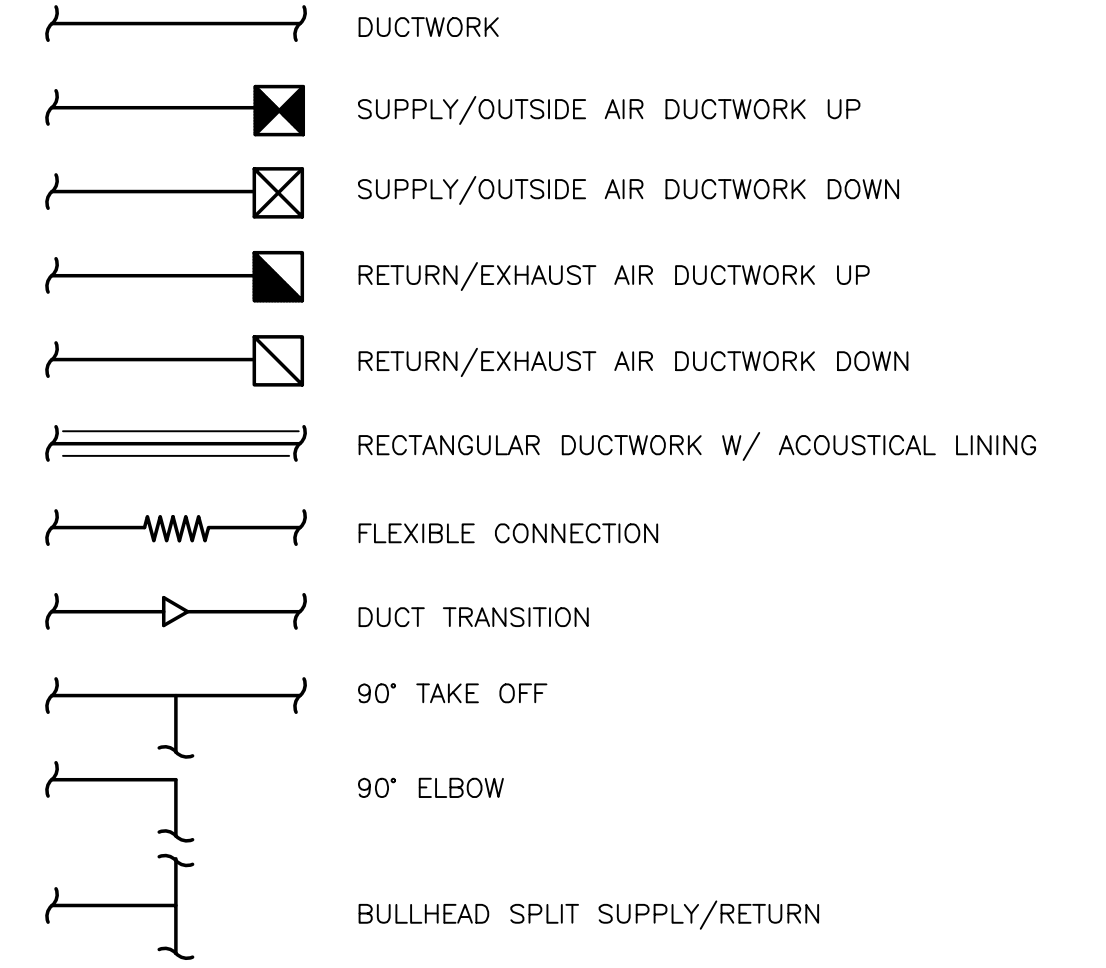
FLOW DIAGRAM EQUIPMENT SYMBOLS



DUCTWORK LEGEND/SYMBOLS



SINGLE LINE DUCTWORK



Project information block including: PREPARED BY (BETA logo), REGISTERED PROFESSIONAL, NOT FOR CONSTRUCTION (CONCEPTUAL), SUBCONSULTANT, PROJECT (Taunton Wastewater Treatment Facility Improvements), Taunton, MA, TITLE (Hvac Legend and General Notes), REVISIONS table, DRAWN BY (RLB), DESIGNED BY (RHB), CHECKED BY (RHB), ISSUE DATE (04/15/2020), BETA JOB NO. (6050), SCALE (NONE), For Review Only, SHEET NO. (H-0.1).

ENERGY RECOVERY UNIT SCHEDULE (PART 1)

TAG NO.	BUILDING	SUPPLY AIR PERFORMANCE							EXHAUST AIR NORMAL PERFORMANCE					DX COOLING COIL								HEATING COIL							ELECTRICAL DATA					WEIGHT LBS	SUPPLY FILTER	OUTDOOR FILTER	EXHAUST FILTER			
		SUPPLY IN CFM	MIN. OA IN CFM	ESP (IN WC)	TSP (IN WC)	FAN RPM	OPERATING POWER HP	MOTOR SIZE HP	EXH./RET. OUT CFM	E.S.P. IN (W.C.)	TOTAL SP IN (W.C.)	FAN RPM	OPERATING POWER HP	MOTOR SIZE HP	REFRIG TYPE	TOTAL MBH	SENSIBLE MBH	ROWS	EAT (DB °F)	EAT (WB °F)	LAT (DB °F)	LAT (WB °F)	CAPACITY (MBH)	GPM	EAT (DB °F)	LAT (DB °F)	EWT (DB °F)	LWT (DB °F)	% GLYCOL	WPD (FT)	APD (IN WC)	MCA	MOCV					V	PHASE	HZ
7ERV-1	SOLID HANDLING BLDG. 1ST FLOOR	13,500	13,500	1.5	3.76	2265	(2) 7.46	(2) 7.5	13,500	1.5	3.282	2465	(2) 9.39	(2) 10	N/A	N/A	N/A	N/A	N/A	N/A	N/A	N/A	787.9	84.7	46.7	100.6	180	160	40% P.G.	9.4	0.144	48.2	60	480	3	60	5,307	-	-	-
7ERV-2	SOLID HANDLING BLDG. 1ST FLOOR	11,900	11,900	1.5	3.385	2120	(2) 6.29	(2) 7.5	11,900	1.5	3.006	2252	(2) 7.18	(2) 7.5	N/A	N/A	N/A	N/A	N/A	N/A	N/A	N/A	717.6	77.2	48.8	104.5	180	160	40% P.G.	7.9	0.12	41.9	50	480	3	60	5,259	-	-	-
7ERV-3	SOLID HANDLING BLDG. 2ND FLOOR	8,800	8,800	1.5	2.7	2197	(2) 3.52	(2) 5	8,800	1.5	2.521	2342	(2) 4.24	(2) 5	N/A	N/A	N/A	N/A	N/A	N/A	N/A	N/A	331.7	35.7	53.1	87.9	180	160	40% P.G.	6.0	0.037	28.7	35	480	3	60	5,089	-	-	-
7ERV-4	SOLID HANDLING BLDG. 2ND FLOOR	8,800	8,800	1.5	2.7	2197	(2) 3.52	(2) 5	8,800	1.5	2.521	2342	(2) 4.24	(2) 5	N/A	N/A	N/A	N/A	N/A	N/A	N/A	N/A	331.7	35.7	53.1	87.9	180	160	40% P.G.	6.0	0.037	28.7	35	480	3	60	5,089	-	-	-

ENERGY RECOVERY UNIT SCHEDULE (PART 2)

TAG NO.	ENERGY RECOVERY WHEEL PERFORMANCE										MANUFACTURER MODEL NUMBER	REMARKS
	WINTER CONDITIONS DESIGN					SUMMER CONDITIONS DESIGN						
	OUTDOOR DB °F	WB °F	DB °F	RH%	OUTDOOR DB °F	WB °F	DB °F	RH%				
7 ERV-1	7.4	5.3	46.7	50	90.8	76.2	80.7	50	GREENHECK RVE-120-74-30H	①②③④⑤⑥⑦		
7 ERV-2	7.4	5.3	48.8	50	90.8	76.2	80.2	50	GREENHECK RVE-120-74-30H	①②③④⑤⑥⑦		
7 ERV-3	7.4	5.3	53.1	50	90.8	76.2	79.2	50	GREENHECK RVE-120-74-30H	①②③④⑤⑥⑦		
7 ERV-4	7.4	5.3	53.1	50	90.8	76.2	79.2	50	GREENHECK RVE-120-74-30H	①②③④⑤⑥⑦		

- ① BASE RAILS ② LOW LEAKAGE DAMPERS ③ RECIRC. DAMPER ④ FACTORY SUPPLY & EXHAUST FAN VFD ⑤ ENERGY BYPASS WHEEL DAMPER
⑥ FACTORY MOUNTED DISCONNECT ⑦ SINGLE POINT POWER CONNECTION

MAKE-UP AIR UNIT SCHEDULE

TAG NO.	LOCATION	SUPPLY BLOWER					HEATING COIL										ELECTRICAL DATA				SOUND POWER BY OCTAVE BAND														WEIGHT LBS	MANUFACTURER MODEL NUMBER	REMARKS
		OA CFM	TSP (IN WC)	ESP (IN WC)	FAN BHP	FAN HP	CAPACITY (MBH)	GPM	EAT (DB °F)	LAT (DB °F)	EWT (DB °F)	LWT (DB °F)	% GLYCOL	WPD (FT)	APD (IN WC)	FLA	MOP	V	PH	HZ	63 Hz	125 Hz	250 Hz	500 Hz	1000 Hz	2000 Hz	4000 Hz	8000 Hz	LWA	DBA	SONES						
7MUA-1	SOLID HANDLING BLDG. 1ST FLOOR	5,000	1.387	1.25	4.75	5	317.6	32.6	-	-	-	-	40% P.G.	-	-	7.6	20	480	3	60	-	-	-	-	-	-	-	-	-	-	-	-	-	-	-	GREENHECK	①②③

- ① BASE TAILS ② FACTORY MOUNTED DISCONNECT ③ SINGLE POINT POWER CONNECTION

BOILER SCHEDULE

TAG NO.	BUILDING	OUTPUT CAPACITY (NET IBR)	FIRING RATE	EFFICIENCY		OPERATING PRESSURE (PSIG)	WATER				ELECTRICAL DATA				WEIGHT (LBS)	MANUFACTURER MODEL NUMBER	REMARKS	
				MBH	OIL (GPH)		COMBUSTION	THERMAL	EWT (°F)	LWT (°F)	% GLYCOL	WPD (FT)	MCA	V				PH
7 B-1	SLUDGE HANDLING	2506	20.7	88.4	88.4	-	180	160	300	40% P.G.	-	-	208	1	60	-	BURHAM MPC15	-

PUMP SCHEDULE

TAG NO.	BUILDING	SYSTEM SERVED	TYPE	GPM	HEAD (FT.)	GLYCOL	FLUID TEMP °F	RPM	ELECTRICAL DATA				MANUFACTURER MODEL NUMBER	REMARKS
									MOTOR HP	V	PH	HZ		
7HWP-1	SLUDGE HANDLING	H.W.	END	300	60	40% P.G.	180	1725	7.5	480	3	60	TACO 2510C	-
7HWP-2	SLUDGE HANDLING	H.W.	END	300	60	40% P.G.	180	1725	7.5	480	3	60	TACO 2510C	-

EXPANSION TANK SCHEDULE

TAG NO.	BUILDING	SERVICE	SYS TEMP (°F)		SYS PRESS (PSIG)		TANK ACCEPTANCE VOLUME (GAL)	TANK AIR CHARGE (PSIG)	MANUFACTURER MODEL NUMBER	REMARKS
			MIN	MAX	MIN	MAX				
7 ET-1	SLUDGE HANDLING	-	40	75	15	150	-	-	-	-

PREPARED BY



REGISTERED PROFESSIONAL

NOT FOR CONSTRUCTION (CONCEPTUAL)

SUBCONSULTANT

PROJECT

Taunton Wastewater Treatment Facility Improvements

Taunton, MA

TITLE

Hvac Schedules

NO.	REVISIONS	DATE
-----	-----------	------

DRAWN BY: RLB
DESIGNED BY: RHB
CHECKED BY: RHB
ISSUE DATE: 04/15/2020
BETA JOB NO.: 6050

SCALE

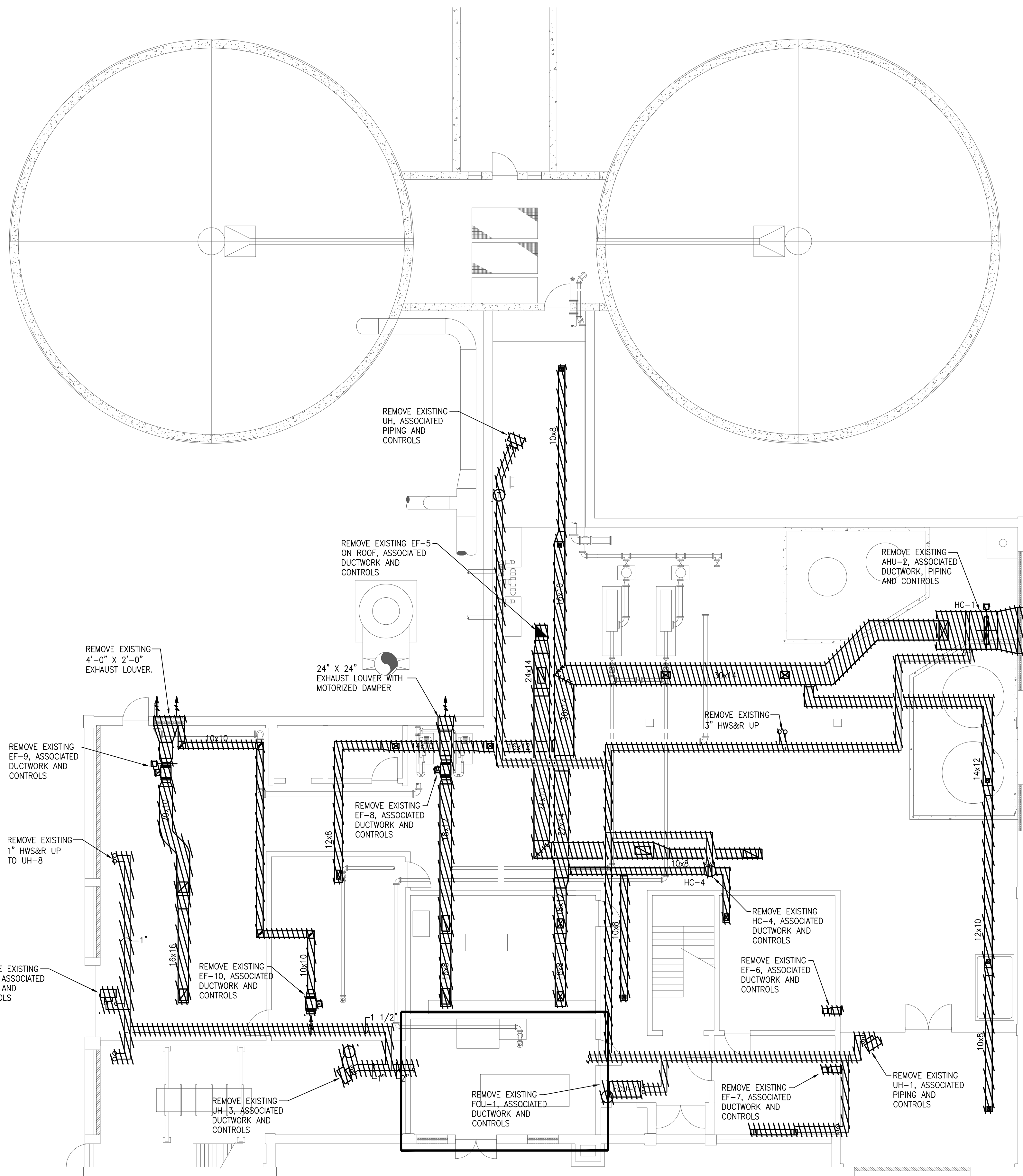
NONE

UNLESS OTHERWISE NOTED OR CHANGED BY REPRODUCTION

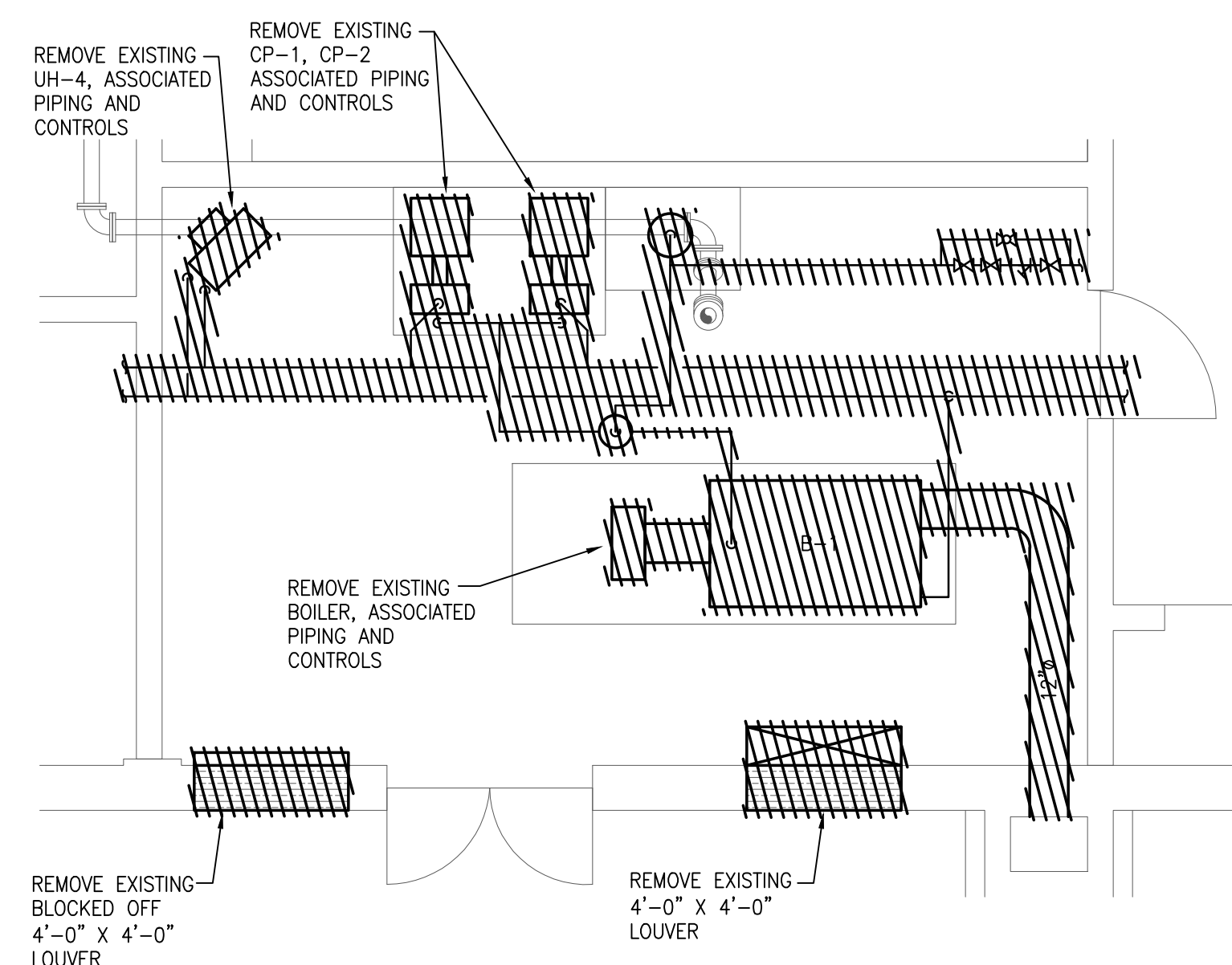
For Review Only

SHEET NO. H-0.2

4/15/2020 1:28 PM W:\YEAR - 2018\18009.00 - TAUNTON WWTF UPGRADE\HVAC DEPARTMENT\18009.00 PHASE 1 A HVAC SOLIDS HANDLING BUILDING.DWG (BETA STB.BW.STB)



FIRST FLOOR - PLAN
SCALE: 1/8" = 1'-0"



BOILER ROOM PART PLAN
SCALE: 1/4" = 1'-0"

PREPARED BY



REGISTERED PROFESSIONAL

NOT FOR CONSTRUCTION (CONCEPTUAL)

SUBCONSULTANT

PROJECT

Taunton Wastewater Treatment Facility Improvements

Taunton, MA

TITLE

Hvac Existing Conditions Solids Handling Building First Floor Plan

NO.	REVISIONS	DATE

DRAWN BY: RLB
 DESIGNED BY: RHB
 CHECKED BY: RHB
 ISSUE DATE: 04/15/2020
 BETA JOB NO.: 6050

SCALE

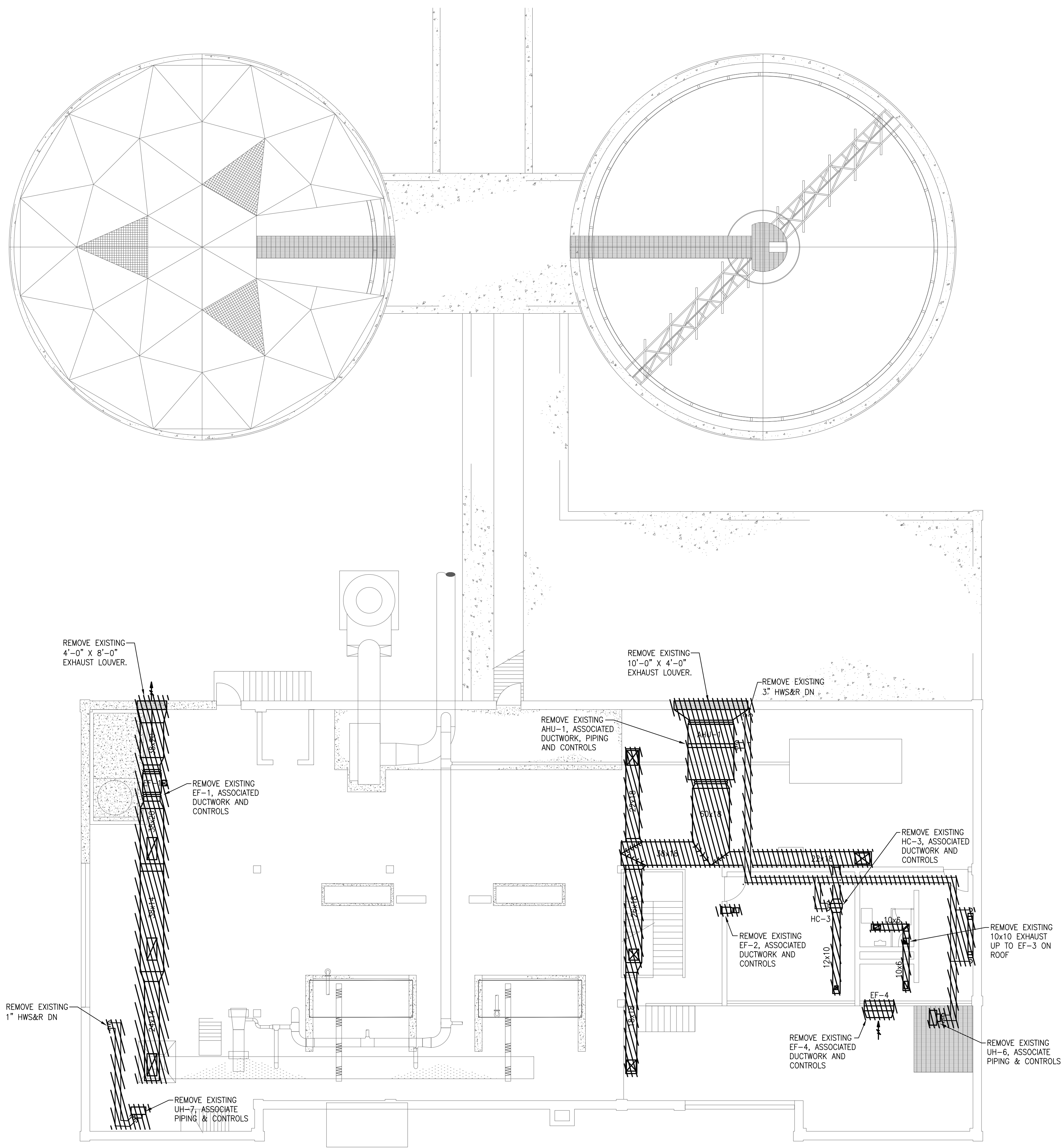
AS SHOWN

Not for Construction

SHEET NO.

H-7.2

4/15/2020 1:28 PM W:\YEAR - 2018\18009.00 - TAUNTON WWTF UPGRADE\HVAC DEPARTMENT\18009.00 PHASE 1 A HVAC SOLIDS HANDLING BUILDING.DWG (BETA STB.BW.STB)



SECOND FLOOR - PLAN
SCALE: 1/8" = 1'-0"

PREPARED BY



REGISTERED PROFESSIONAL

NOT FOR CONSTRUCTION (CONCEPTUAL)

SUBCONSULTANT

PROJECT

Taunton Wastewater Treatment Facility Improvements

Taunton, MA

TITLE

Hvac Existing Conditions Solids Handling Building Second Floor Plan

NO.	REVISIONS	DATE

DRAWN BY:	RLB
DESIGNED BY:	RHB
CHECKED BY:	RHB
ISSUE DATE:	04/15/2020
BETA JOB NO.:	6050

SCALE

AS SHOWN

UNLESS OTHERWISE NOTED OR CHANGED BY REPRODUCTION

Not for Construction

SHEET NO. **H-7.3**

PLUMBING NOTES

1. THE WORK COVERED CONSISTS OF FURNISHING ALL LABOR AND MATERIALS NECESSARY TO INSTALL, COMPLETE AND READY FOR CONTINUOUS OPERATION, THE PLUMBING SYSTEMS, APPARATUS AND EQUIPMENT FOR THIS PROJECT.
2. ALL EQUIPMENT AND MATERIALS FURNISHED UNDER THE PLUMBING SUB-CONTRACT, LABOR AND TESTING PERFORMED HEREIN SHALL BE IN COMPLETE ACCORDANCE WITH THE STATE BUILDING CODE, LOCAL PLUMBING CODES, ALL LOCAL CODES AND REGULATIONS, NATIONAL FIRE PROTECTION ASSOCIATION, INSURANCE REGULATIONS AND REQUIREMENTS GOVERNING SUCH WORK.
3. ANY AND ALL PERMITS REQUIRED FOR INSTALLATION OF ANY MATERIAL SHALL BE OBTAINED AS PART OF THE WORK OF THE SPECIFICATION INCLUDING ALL FEES OR EXPENSES INCURRED.
4. FOR PLUMBING SCHEDULES, REFER TO DRAWING P0.2.
5. FOR PLUMBING DETAILS, REFER TO DRAWINGS P0.3 & P.04.
6. ALL PRODUCTS USED AS PART OF THE POTABLE WATER SYSTEM WHERE THE INTENDED PURPOSE IS TO DELIVER OR CONVEY POTABLE WATER FOR HUMAN CONSUMPTION SHALL BE LEAD FREE AND CONFORM TO THE LATEST "LEAD FREE" LAW.
7. WHERE WATER PIPING IS SHOWN DROPPING INTO PLUMBING CHASES WITH SIZES NOTED, THAT SIZE SHALL BE CARRIED FULL LENGTH THROUGH THE CHASE. REFER TO PLUMBING FIXTURE SCHEDULE ON THIS DRAWING FOR INDIVIDUAL FIXTURE CONNECTION SIZES.
8. UNLESS OTHERWISE NOTED, ALL HORIZONTAL DRAINAGE PIPING WHICH IS 3" OR LESS IN DIAMETER SHALL PITCH OF NOT LESS THAN 1/4" PER FOOT AND ALL HORIZONTAL DRAINAGE PIPING WHICH IS 4" OR LARGER IN DIAMETER SHALL PITCH OF NOT LESS THAN 1/8" PER FOOT.
9. PROVIDE ALL FLOOR CLEANOUTS WITH HUB AND SPIGOT; LEAD AND OAKUM JOINTS FROM CLEANOUT TO AND INCLUDING CONNECTION TO SANITARY OR STORM DRAIN.
10. REFER TO ARCHITECTURAL PLANS FOR EXACT LOCATION AND HEIGHT OF ALL PLUMBING FIXTURES.
11. MISCELLANEOUS DISCREPANCIES OR OMISSIONS WHICH MIGHT APPEAR ON THE PLANS OR SPECIFICATIONS WILL NOT RELIEVE THE PLUMBING SUB-CONTRACTOR OF CODE COMPLIANCE.
12. ALL NEW FLOOR DRAINS SHALL BE PROVIDED WITH A TRAP PRIMER CONNECTION. CONTRACTOR SHALL PROVIDE ALL ASSOCIATED EQUIPMENT NECESSARY TO PROVIDE A COMPLETE SYSTEM.
13. PROVIDE CLEANOUTS AT ALL CHANGE OF DIRECTIONS FOR STORM AND SANITARY/WASTE PIPING.
14. PROVIDE DANDY CLEANOUTS AT ALL EXPOSED STORM AND SANITARY/WASTE PIPING 18 INCHES (APPROXIMATELY) ABOVE FINISHED FLOOR WHERE PIPING GOES BELOW FINISHED FLOOR/GRADE.
15. PROVIDE WALL CLEANOUTS WITH ACCESS PANELS AT ALL STORM AND SANITARY/WASTE PIPING WITHIN PIPE CHASES OR WALLS.
16. ALL INTERIOR BURIED DOMESTIC WATER PIPING, NON-POTABLE WATER PIPING, TEMPERED WATER PIPING OR AIR PIPING SHALL BE SOFT ROLLED "K" COPPER COIL AND BE PROTECTED WITH A HIGH DENSITY RUBBER INSULATION. FITTINGS SHALL NOT BE PERMITTED IN OR UNDER SLAB. PROVIDE SLAB PENETRATIONS WITH SLEEVE AND FIRE STOPPING.
17. RISER DIAGRAMS ARE SHOWN TO INDICATE PIPE SIZES ONLY AND ARE NOT INTENDED TO SHOW EVERY OFFSET OR FITTING. FOR FIXTURE CONNECTION SIZES, REFER TO PLUMBING FIXTURE SCHEDULE ON PLUMBING DRAWING P0.2. IF ACCESS PANELS ARE REQUIRED; LOCATE BENEATH COUNTER TOPS IN AN ACCESSIBLE LOCATION WHICH SHALL NOT INTERFERE WITH OTHER PIPING. WHERE CONFLICTS IN PIPE SIZES OCCUR BETWEEN FLOOR PLANS AND RISER DIAGRAMS, THE LARGER PIPE SIZE SHALL PREVAIL.

PLUMBING LEGEND

SYMBOL	ABBREVIATION	DESCRIPTION
---	ETR	LIGHT LINE INDICATES EXISTING PIPING TO REMAIN
	RE	REMOVE EXISTING PIPING
⊕	CTE	CONNECT TO EXISTING
— X — X —	C&C	CUT & CAP
====		BELOW FLOOR PIPING (INDICATED AS DOUBLE LINEWORK)
---	CW	COLD WATER
---	HW	HOT WATER
---	HWR	HOT WATER RECIRCULATION
---	S or W	SOIL OR WASTE
---	V	VENT
---	RW	RAIN WATER CONDUCTOR
— OFD —	OFD	STORM WATER OVER FLOW DRAINAGE
— PD —	PD	PUMPED DISCHARGE
~	HTI / TMC	HEAT TRACE AND INSULATE
→	CONT	CONTINUATION
○	UP	PIPE RISE OR UP
○	DP OR DN	PIPE DROP OR DOWN
○	TEE	PIPE TEE
→	SOV	SHUT-OFF VALVE
⊕		SOLENOID VALVE
⊕	VV	VALVE IN VERTICAL
⊕	CV	CHECK VALVE
⊕	BVA	BALANCING VALVE ASSEMBLY
∞	W & T	WASTE & TRAP
∞	OED	OPEN END DRAIN WITH BACKWATER VALVE
⊕	CO	CLEANOUT PLUG
○	FCO	FLUSH FLOOR CLEANOUT
○	GCO	GRADE CLEANOUT
○	DCO	DANDY CLEANOUT
⊔		CAPPED PIPE
→		ARROW INDICATES DIRECTION OF FLOW
→ .01		ARROW INDICATES DIRECTION OF SLOPE
		UNION
+	WTS	WATERTIGHT SLEEVE
⊕	TP	TRAP PRIMER
+	HB	HOSE BIBB
+	WH	WALL HYDRANT
⊕		DIAGRAM NO. & DWG. NO. REFERENCE
⊕	FD "A"	FLOOR DRAIN & TYPE
⊕	RD "A"	ROOF DRAIN & TYPE
⊕	RPBP	REDUCED PRESSURE BACKFLOW PREVENTER
⊕	WM	WATER METER
⊕	GM	GAS METER
⊕	CO	CARBON MONOXIDE DETECTOR
⊕	T	THERMOMETER
⊕	PG	PRESSURE GAUGE WITH PETCOCK
⊕	T&P	TEMPERATURE AND PRESSURE RELIEF VALVE
⊕	SA	SHOCK ABSORBER
⊕		VACUUM RELIEF VALVE

PLUMBING LEGEND

SYMBOL	ABBREVIATION	DESCRIPTION
	WH-1	WATER HEATER & NUMBER
	SS	SOIL STACK
	VS	VENT STACK
	VTR	VENT THRU ROOF
	INV	INVERT
	TMV	THERMOSTATIC MIXING VALVE
	TW	TEMPERED WATER (70°F)
	TYP	TYPICAL
	NTS	NOT TO SCALE
	AFF	ABOVE FINISHED FLOOR
	LPC	LIMIT OF PLUMBING CONTRACT
	GC	GENERAL CONTRACTOR
	FPC	FIRE PROTECTION CONTRACTOR
	PC	PLUMBING CONTRACTOR
	EC	ELECTRICAL CONTRACTOR
	HVAC	HVAC CONTRACTOR
	LPC	LIMIT OF PLUMBING CONTRACT
	WC	WATER CLOSET
	UR	URINAL
	LAV	LAVATORY
	MR	MOP RECEPTOR
	SHR	SHOWER
	DF	DRINKING FOUNTAIN
	SK	SINK
	F & I	FURNISH & INSTALL
	S=.01	SLOPE = 1/8" PER FOOT
	S=.02	SLOPE = 1/4" PER FOOT
	NO	NORMALLY OPEN
	NC	NORMALLY CLOSED
	F.F.E.	FINISHED FLOOR ELEVATION

PREPARED BY



REGISTERED PROFESSIONAL

NOT FOR CONSTRUCTION (CONCEPTUAL)

SUBCONSULTANT

PROJECT

Taunton Wastewater Treatment Facility Improvements

Taunton, MA

TITLE

Plumbing Legend and General Notes

NO.	REVISIONS	DATE

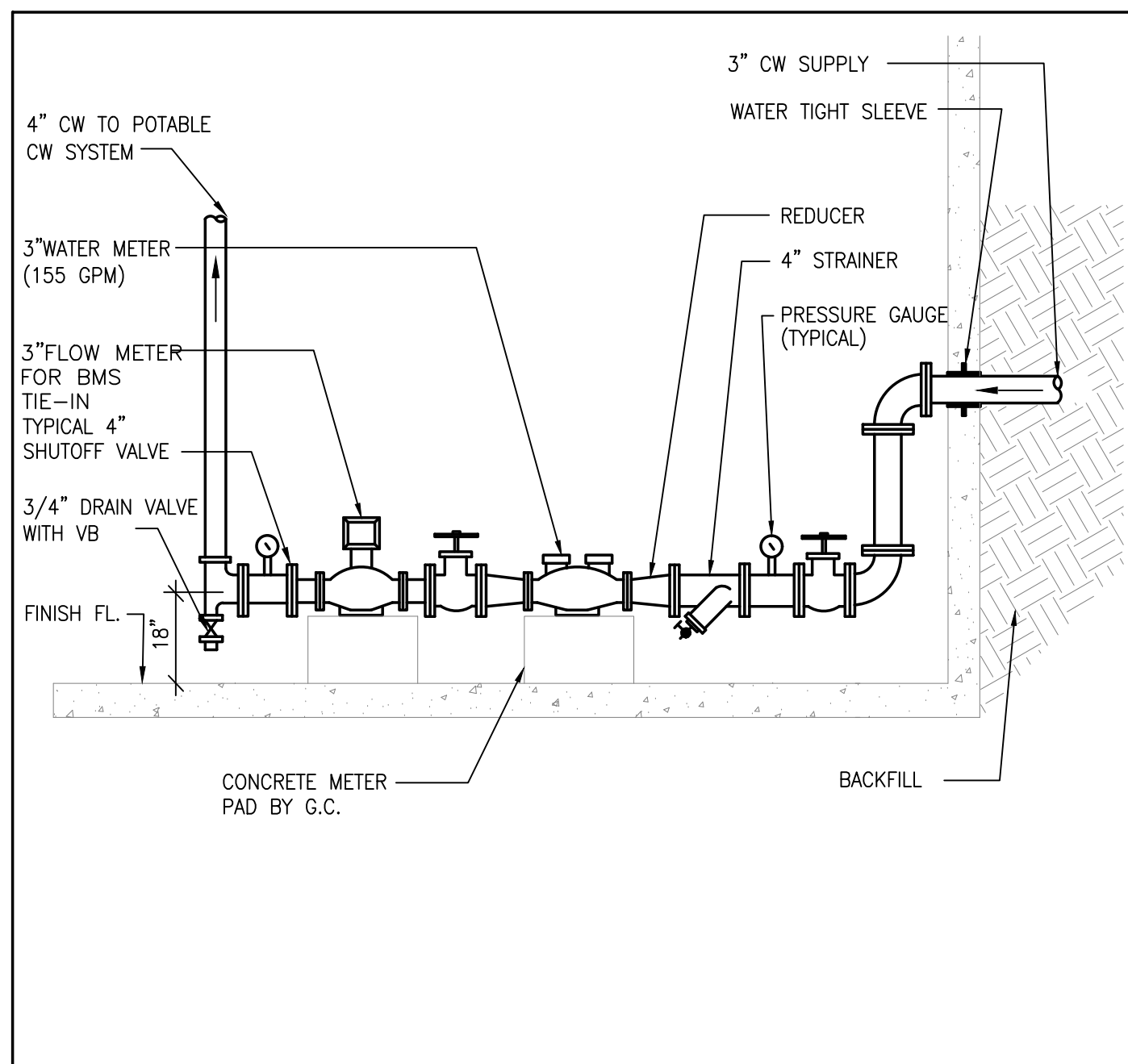
SCALE
NONE

UNLESS OTHERWISE NOTED OR CHANGED BY REPRODUCTION

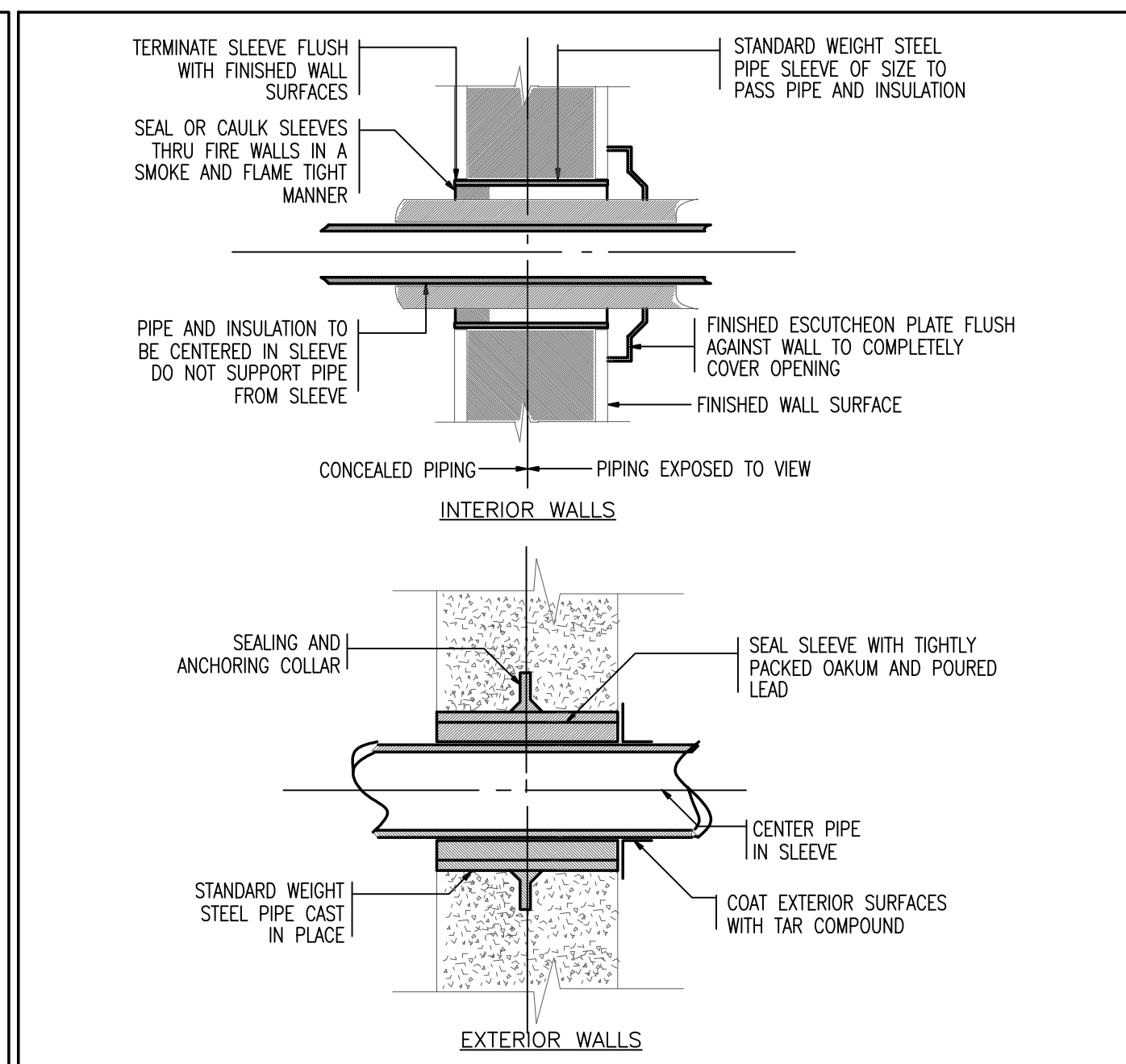
For Review Only

SHEET NO. P-0.1

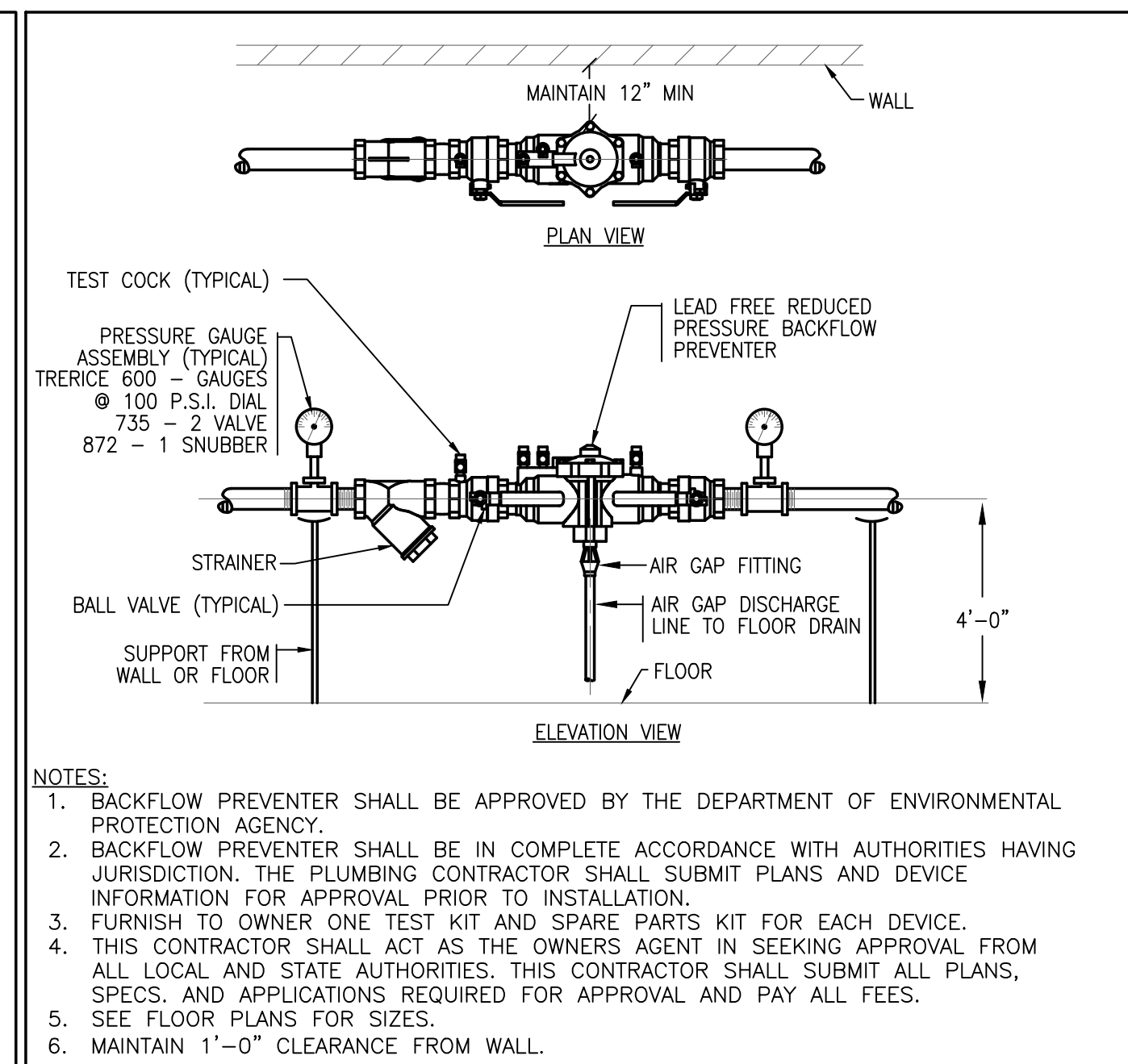
4/15/2020 12:02 PM 10:YEAR - 201818009.00 - TAUNTON WWTF UPGRADES/PLUMBING DEPARTMENT\18009.00 PHASE 1A PLUMBING LEGEND SCHEDULES DETAILS.DWG (BETA, STB, BW, STB)



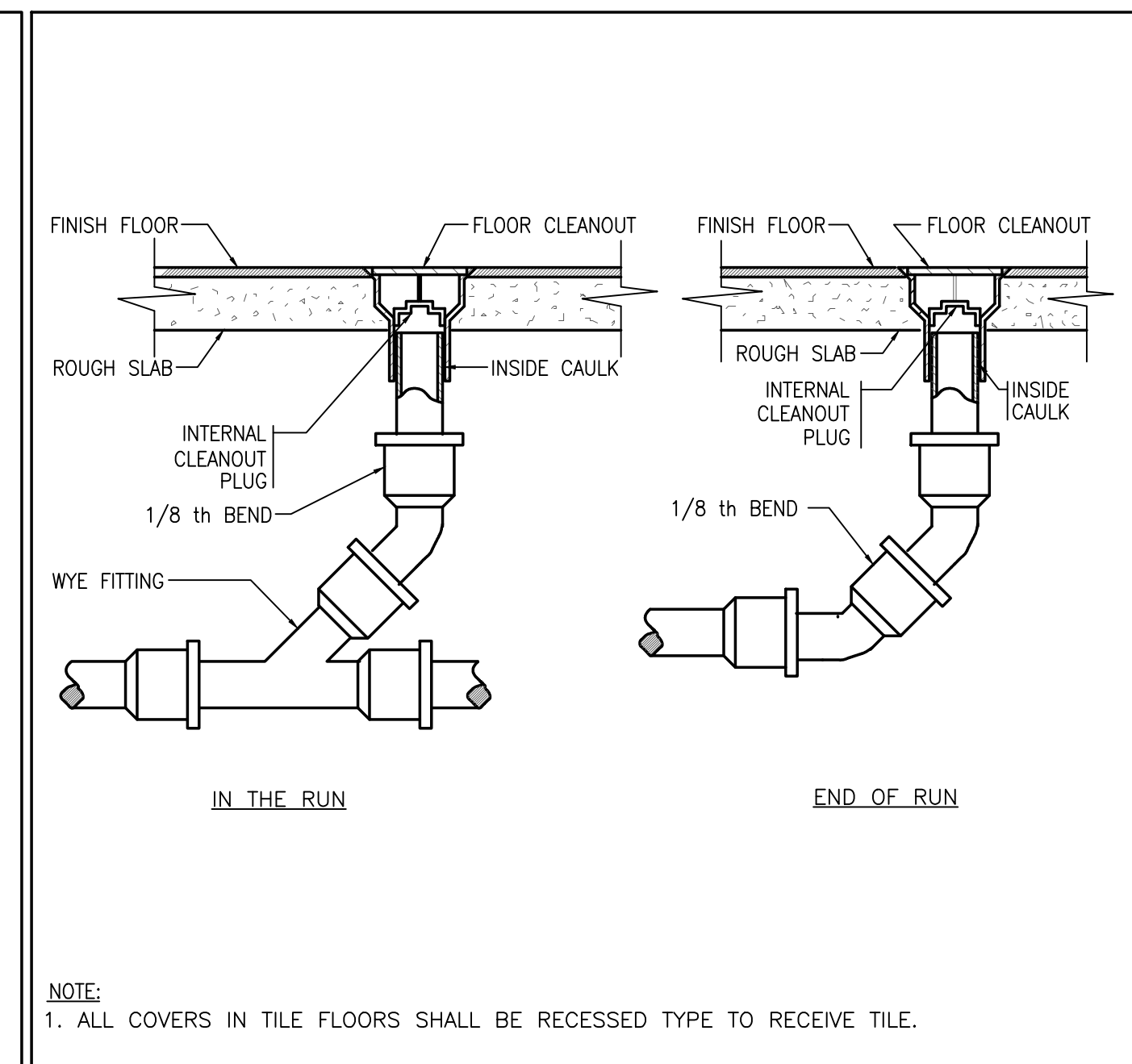
1 DOMESTIC WATER METER DETAIL NTS



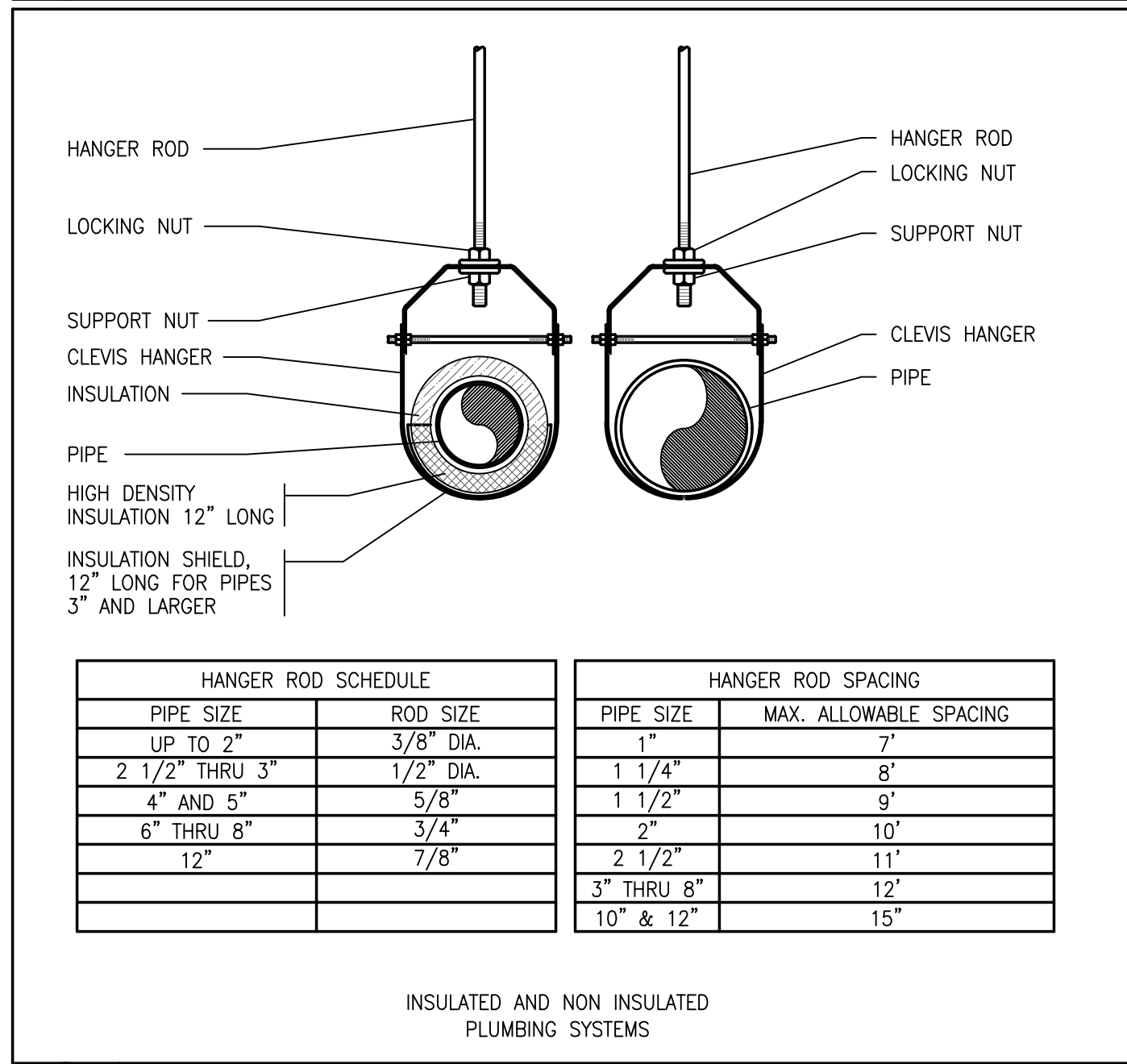
2 PIPING SLEEVE DETAIL NTS



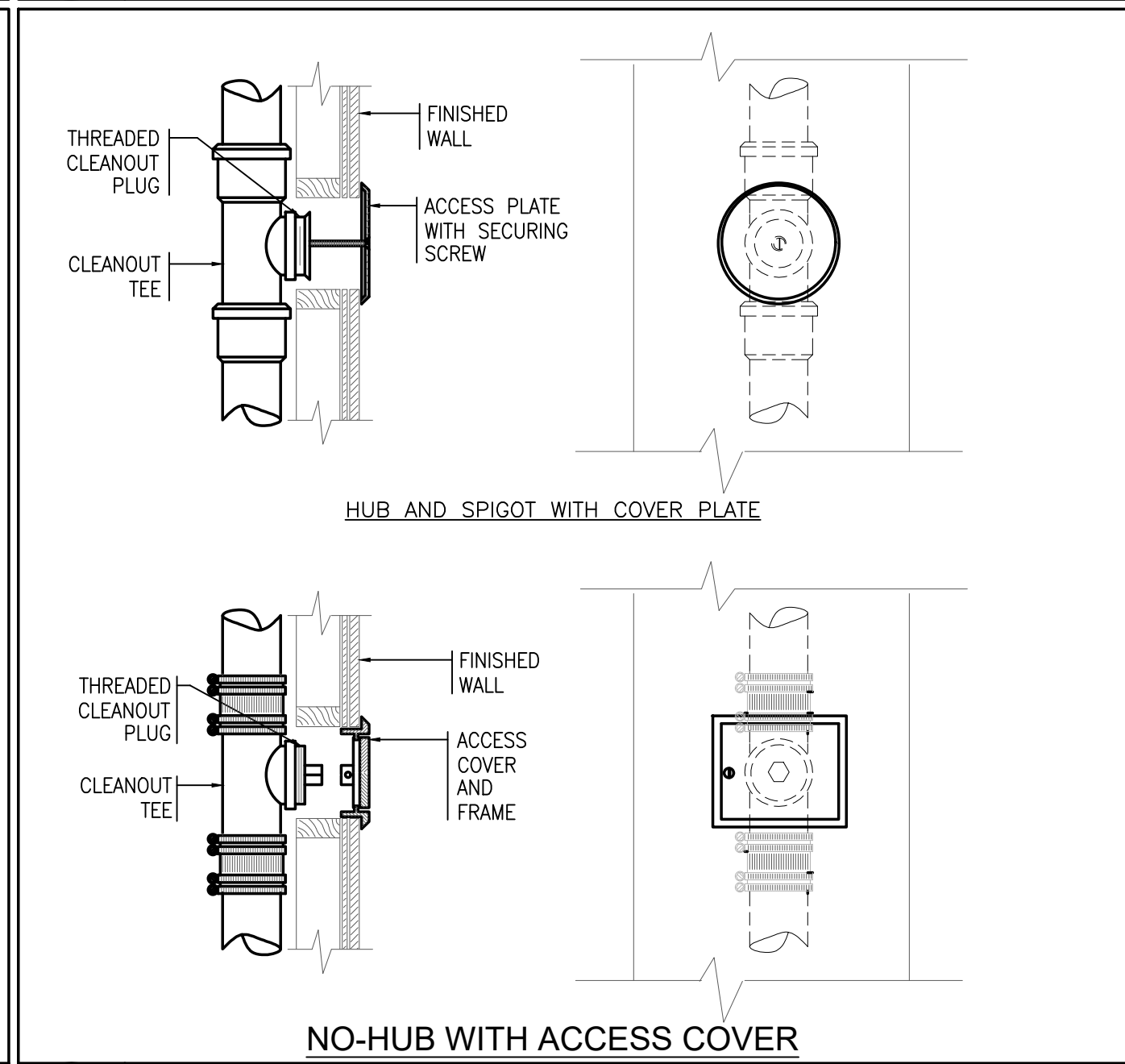
3 RPZ BACKFLOW PREVENTER DETAIL NTS



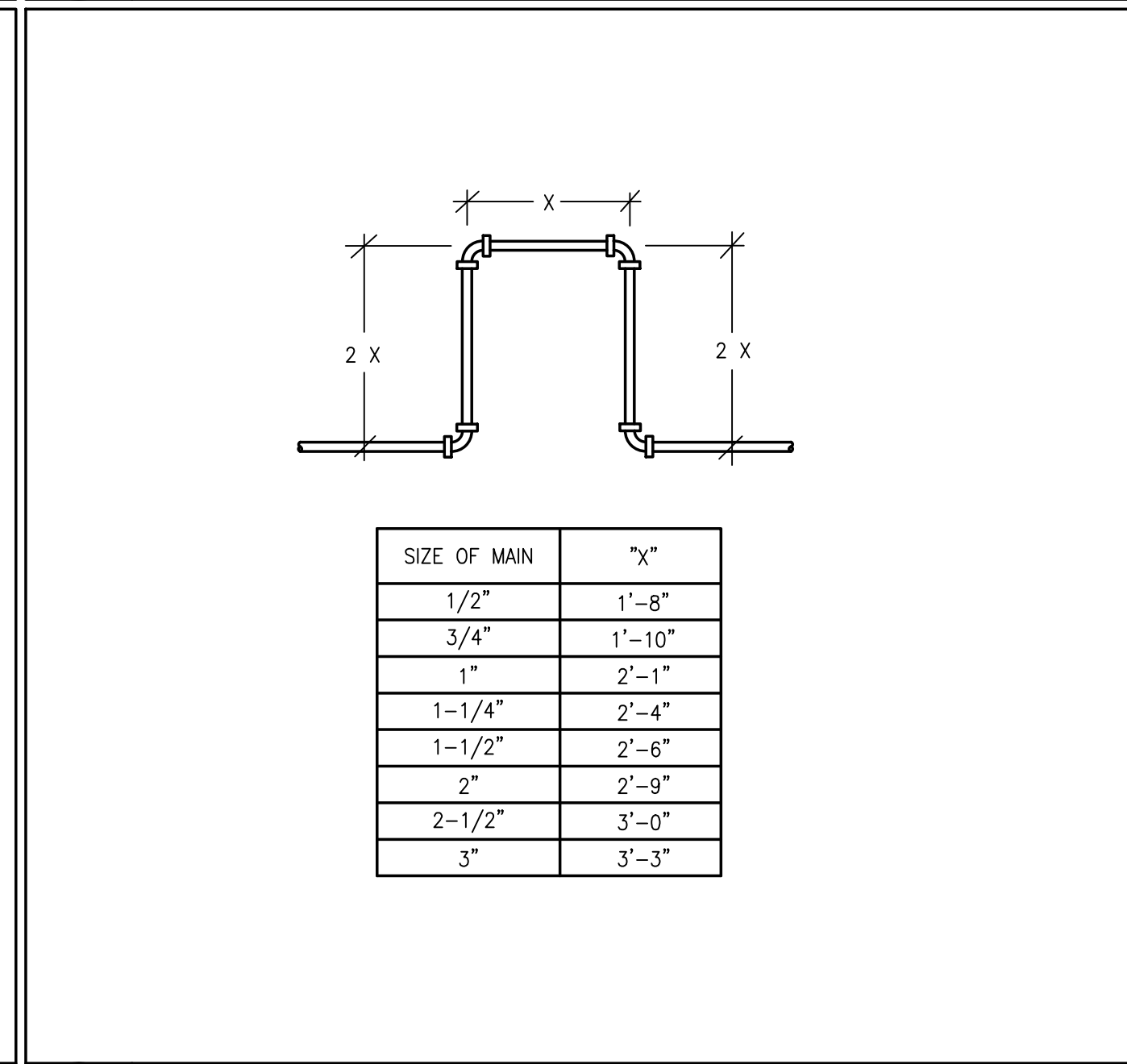
4 FLOOR CLEANOUT DETAIL NTS



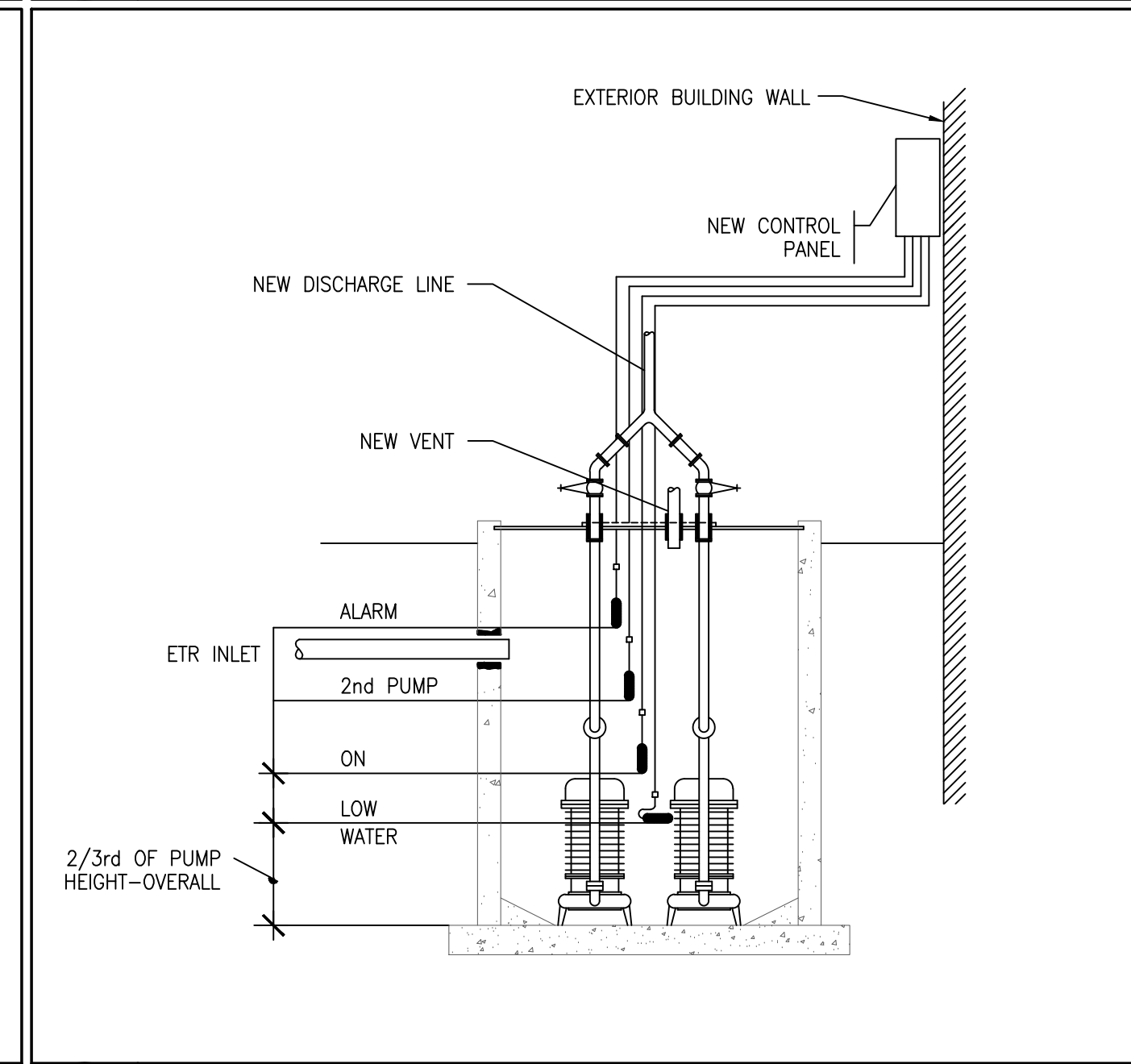
5 CLEVIS PIPE HANGER DETAIL NTS



6 WALL CLEANOUTS DETAIL NTS



7 EXPANSION LOOP DETAIL NTS



8 NEW EJECTOR PUMPS IN EXISTING PIT DETAIL NTS

PREPARED BY



REGISTERED PROFESSIONAL

NOT FOR CONSTRUCTION (CONCEPTUAL)

SUBCONSULTANT

PROJECT

Taunton Wastewater Treatment Facility Improvements

Taunton, MA

TITLE

Plumbing Details

NO. REVISIONS DATE

DRAWN BY: RLB

DESIGNED BY: RHB

CHECKED BY: RHB

ISSUE DATE: 04/15/2020

BETA JOB NO.: 6050

SCALE

NONE

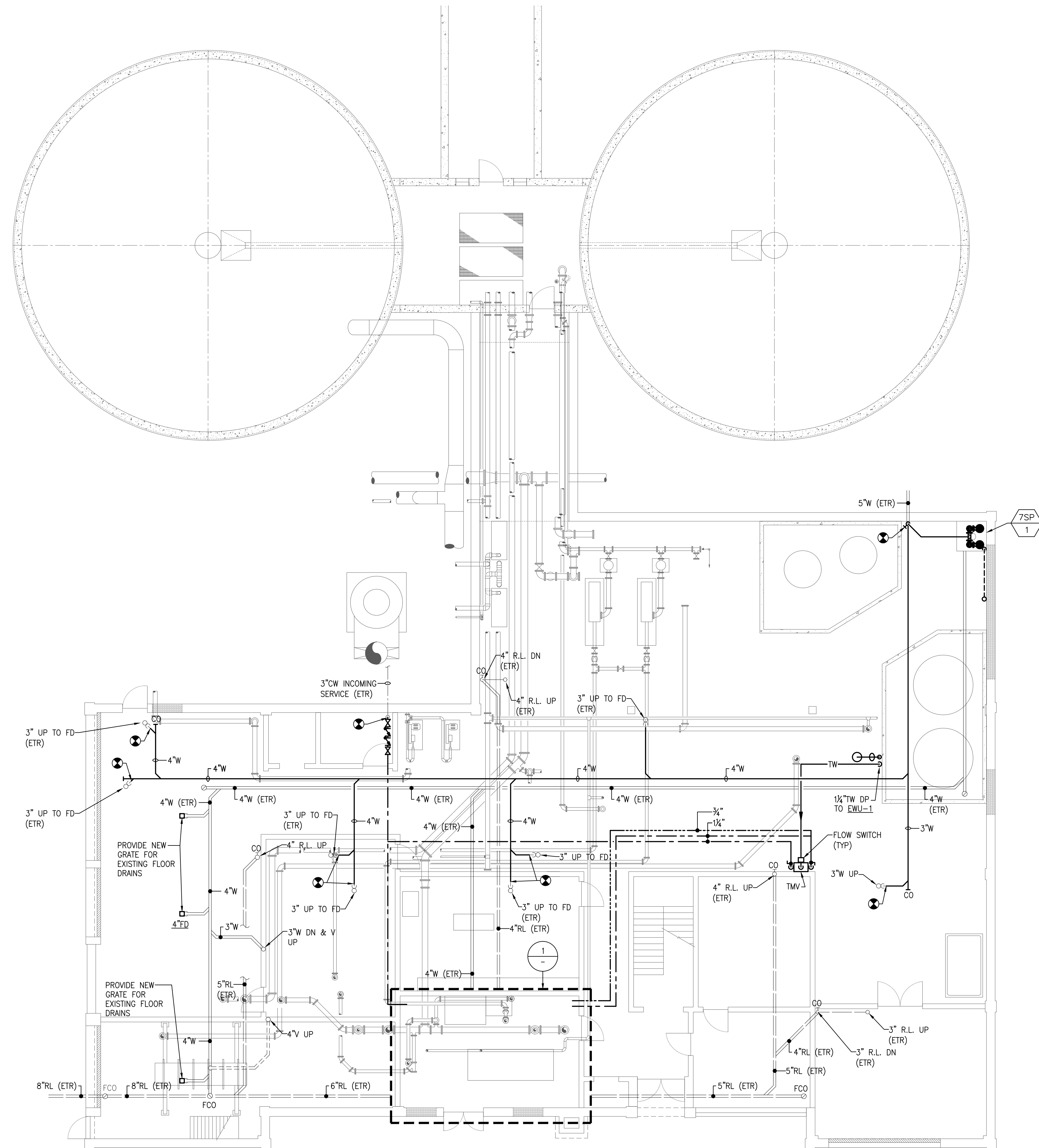
UNLESS OTHERWISE NOTED OR CHANGED BY REPRODUCTION

For Review Only

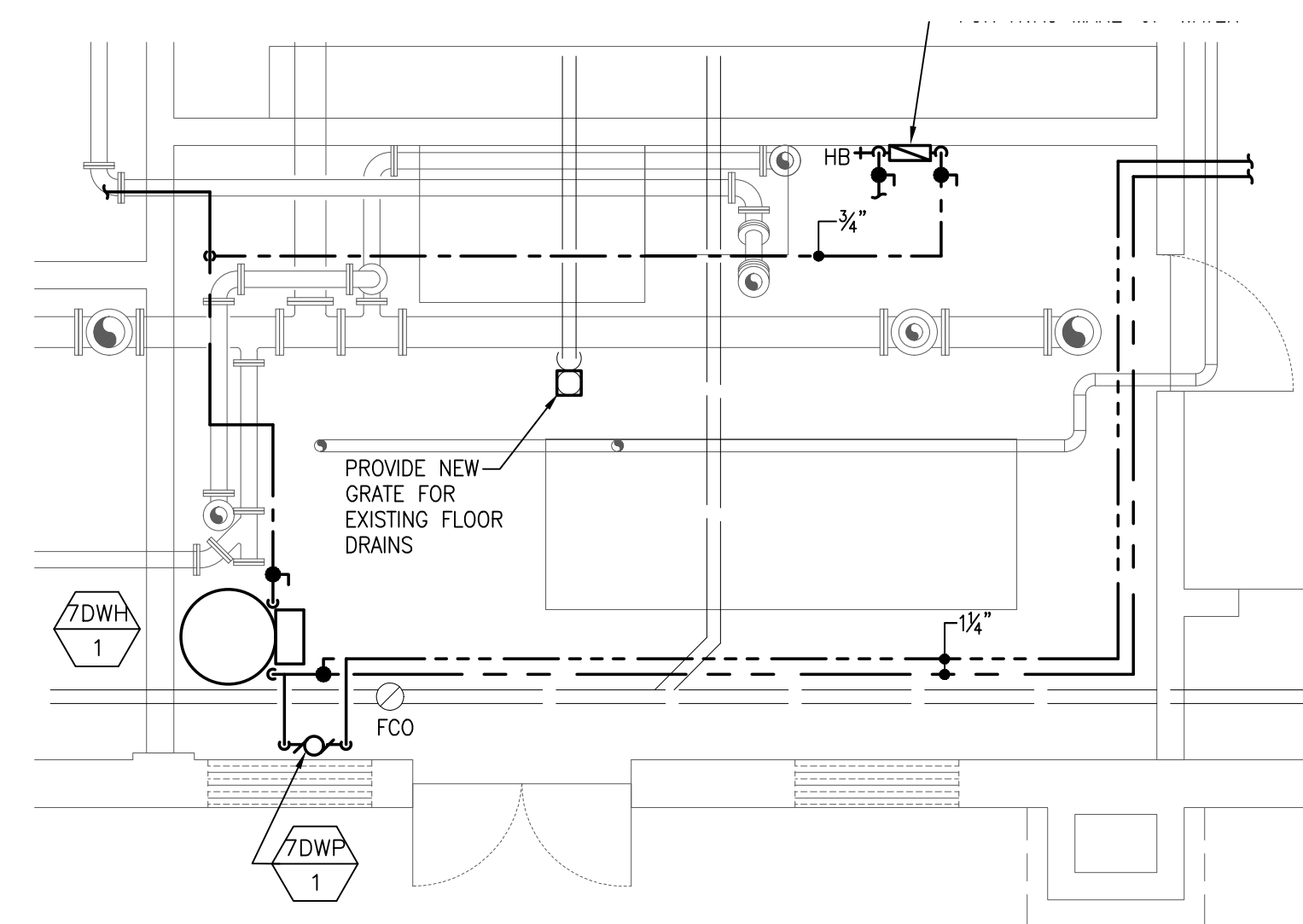
SHEET NO.

P-0.3

4/15/2020 1:45 PM 10YEAR - 201818009.00 - TAUNTON WWTF UPGRADES/PLUMBING DEPARTMENT\18009.00 PHASE 1A PLUMBING SOLIDS HANDLING BUILDING & TANKS DWG (BETA STB BW/STB)



FIRST FLOOR - PLAN
SCALE: 1/8"= 1'-0"



BOILER ROOM PART PLAN
SCALE: 1/4"= 1'-0"

PREPARED BY



REGISTERED PROFESSIONAL

**NOT FOR
CONSTRUCTION
(CONCEPTUAL)**

SUBCONSULTANT

PROJECT

**Taunton Wastewater
Treatment Facility
Improvements**

Taunton, MA

TITLE

**Plumbing Solids
Handling
Building First
Floor New Work
Plan**

NO.	REVISIONS	DATE

DRAWN BY: RLB
DESIGNED BY: RLB
CHECKED BY: JL
ISSUE DATE: 04/15/2020
BETA JOB NO.: 6050

SCALE

AS SHOWN

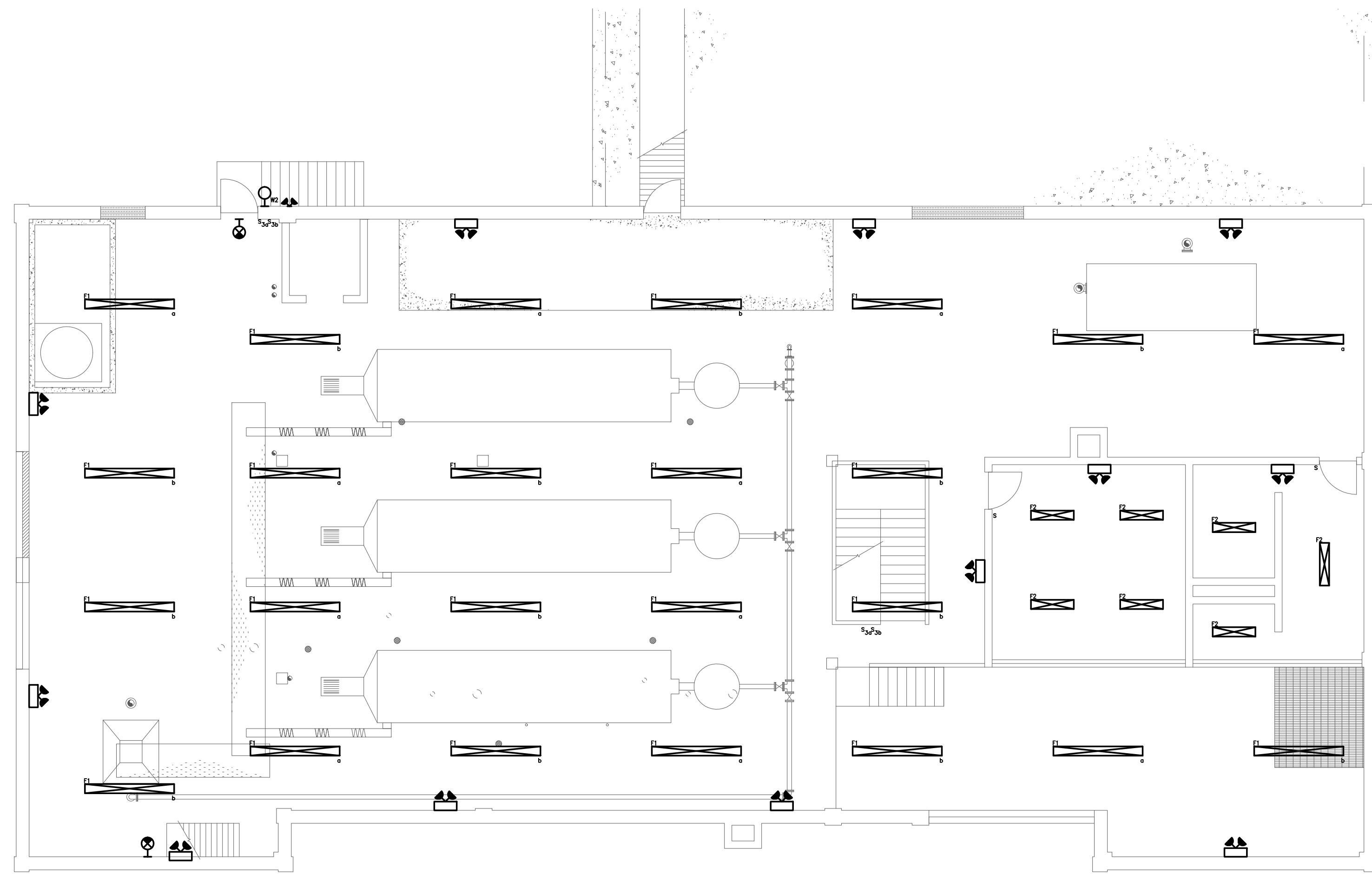
UNLESS OTHERWISE NOTED OR CHANGED BY REPRODUCTION

For Review Only

SHEET NO.

P-7.3

4/15/2020 2:12 PM W:\YEAR - 2018\18009.00 - TAUNTON WWTF UPGRADES\ELECTRICAL DEPARTMENT\18009.00 ELEC SOLIDS HANDLING BUILDING & TANKS.DWG (BETA STB BW.STB)



SECOND FLOOR - PLAN
SCALE: 1/8" = 1'-0"

PREPARED BY



REGISTERED PROFESSIONAL

**NOT FOR
CONSTRUCTION
(CONCEPTUAL)**

SUBCONSULTANT

PROJECT

**Taunton Wastewater
Treatment Facility
Improvements**

Taunton, MA

TITLE

**Electrical
Solids Handling
Building
Second Floor
New Work
Lighting Plan**

NO.	REVISIONS	DATE

DRAWN BY: RLB

DESIGNED BY: MC

CHECKED BY: MC

ISSUE DATE: 04/15/2020

BETA JOB NO.: 6050

SCALE

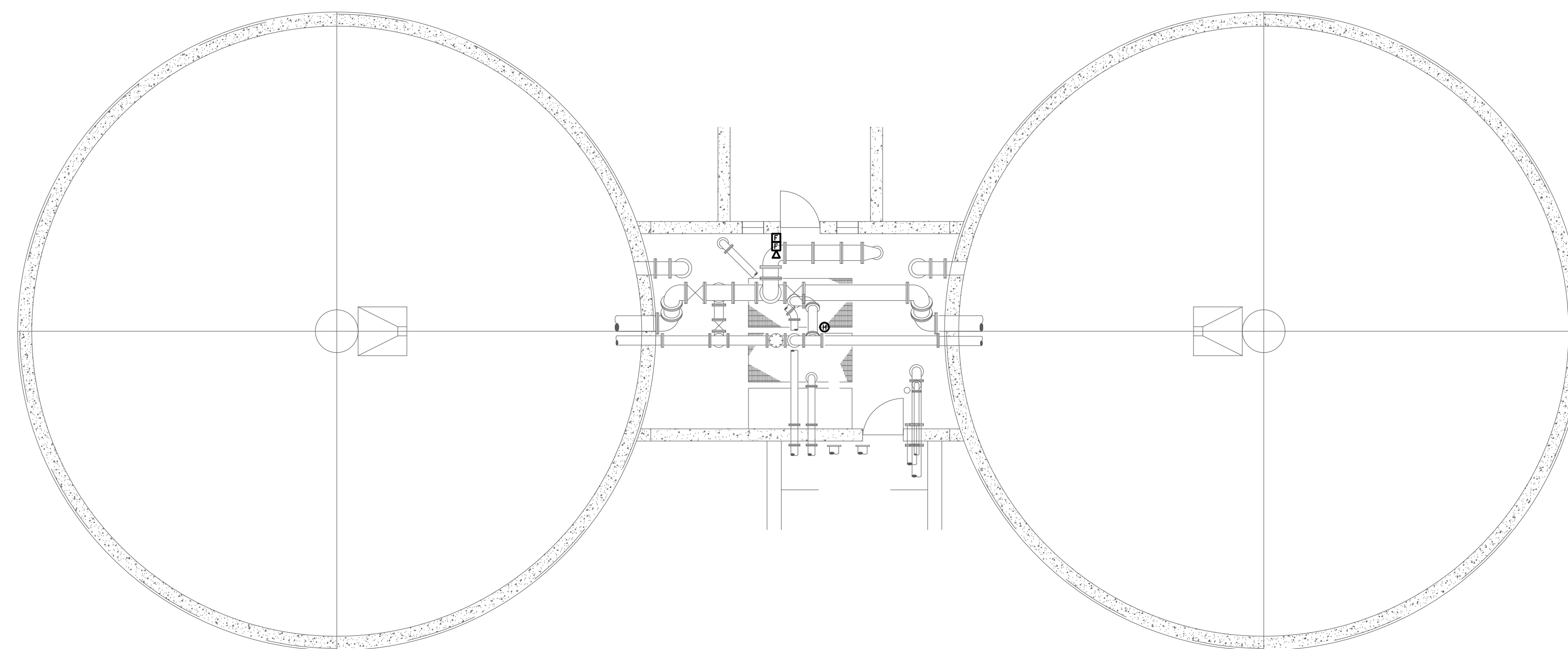
AS SHOWN

For Review Only

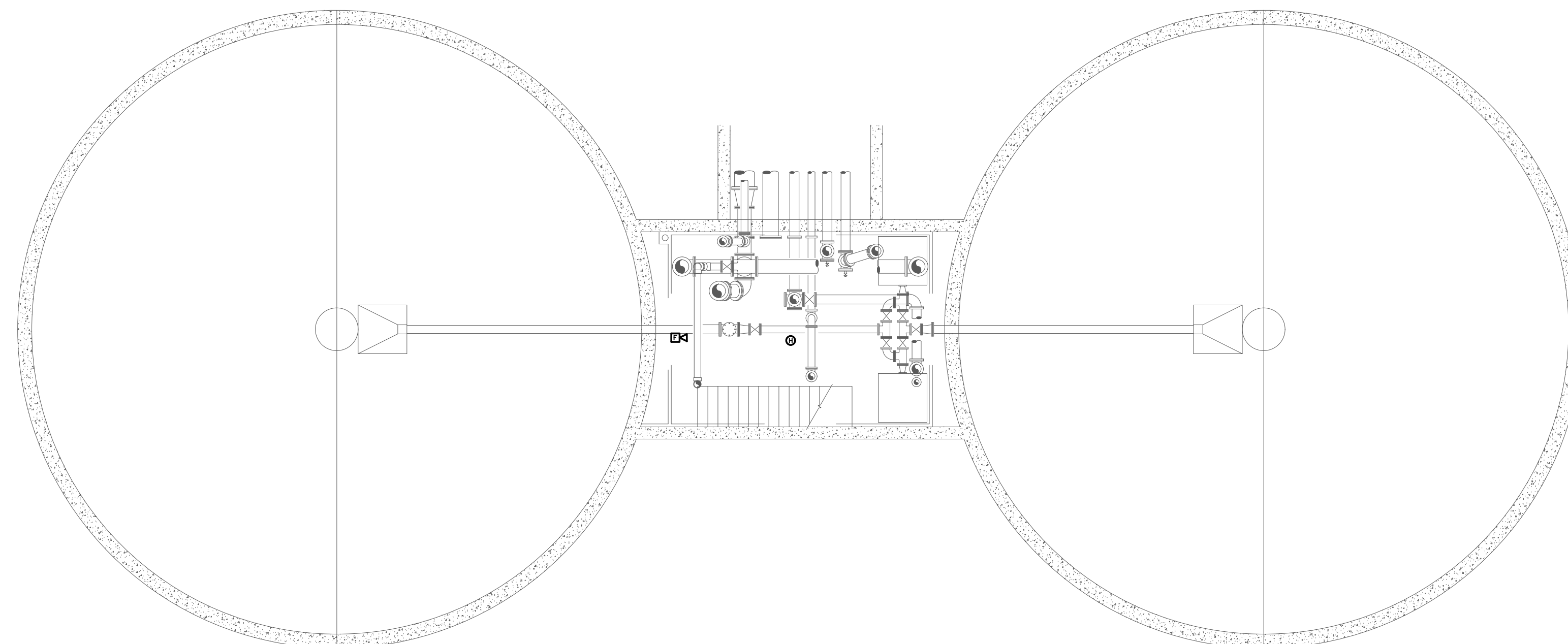
SHEET NO.

E-7.9

4/15/2020 2:18 PM W:\YEAR - 2018\18009.00 - TAUNTON WWTF UPGRADE\ELECTRICAL DEPARTMENT\18009.00 ELEC SOLIDS HANDLING BUILDING & TANKS.DWG (BETA STB BW.STB)



MID LEVEL PLAN
SCALE: 1/8"= 1'-0"



LOWER LEVEL PLAN
SCALE: 1/8"= 1'-0"

PREPARED BY



REGISTERED PROFESSIONAL

NOT FOR
CONSTRUCTION
(CONCEPTUAL)

SUBCONSULTANT

PROJECT

**Taunton Wastewater
Treatment Facility
Improvements**

Taunton, MA

TITLE

Electrical
Gravity Thickening
Tanks
New Work Fire Alarm
Plans

NO.	REVISIONS	DATE

DRAWN BY: RLB

DESIGNED BY: MC

CHECKED BY: MC

ISSUE DATE: 04/15/2020

BETA JOB NO.: 6050

SCALE

AS SHOWN

UNLESS OTHERWISE NOTED OR CHANGED BY REPRODUCTION

For Review Only

SHEET NO.

E-7.10

