

5/21/2021 8:05 AM W:\YEAR - 2018\18009.00 - TAUNTON WWTF UPGRADE\HVAC DEPARTMENT\PHASE 2\18009.00 HVAC LEGEND SCHEDULE AND DETAILS-PHASE 2.DWG (BETA STB BW.STB)

GENERAL NOTES

- 1. HVAC WORK IS INDICATED DIAGRAMMATICALLY. EXACT LOCATIONS OF ALL COMPONENTS ARE TO BE DETERMINED IN THE FIELD AND BY THE ACTUAL BUILDING CONDITIONS. EXISTING DUCTS, PIPING OR EQUIPMENT INTERFERING WITH OTHER INSTALLATIONS SHALL BE RELOCATED AS REQUIRED AT NO ADDITIONAL COST TO THE OWNER. EXACT LOCATIONS MUST HAVE THE APPROVAL OF THE ARCHITECT.
- 2. ALL WORK SHALL BE COORDINATED WITH ALL OTHER TRADES BEFORE ANY INSTALLATION IS MADE.
- 3. ALL EQUIPMENT SHALL BE INSTALLED IN ACCORDANCE WITH STATE CODES, MANUFACTURER'S APPROVED PUBLISHED LITERATURE, AND AUTHORITIES HAVING JURISDICTION.
- 4. INSTALLATION OF EQUIPMENT SHALL PERMIT ACCESSIBILITY FOR SERVICE AND/OR REPLACEMENT.
- 5. ALL CEILING MOUNTED EQUIPMENT SHALL BE INSTALLED IN SUCH A WAY THAT LIGHTS, PIPING, AND DUCTWORK DO NOT BLOCK ACCESS TO UNITS AND RELATED ACCESSORIES.
- 6. HVAC CONTRACTOR SHALL COORDINATE ALL WALL, CEILING, FLOOR, ROOF AND BEAM PENETRATIONS WITH ARCHITECT AND STRUCTURAL ENGINEER.
- 7. ALL DUCT SIZES SHOWN ARE NET INSIDE CLEAR DIMENSIONS.
- 8. PROVIDE VOLUME DAMPERS AT EVERY MAIN BRANCH TAKE-OFF AND AS INDICATED. AND IN SUCH OTHER LOCATIONS WHERE REQUIRED TO PROPERLY BALANCE THE SYSTEM. DO NOT INSTALL VOLUME DAMPERS IN NECKS OF DIFFUSERS OR AT DISCHARGE OR INLET GRILLES IN DUCTWORK.
- 9. PROVIDE INSTRUMENT TEST HOLES WITH CAPS IN AIR DISTRIBUTION SYSTEMS AS REQUIRED TO BALANCE SYSTEM.
- 10. HVAC CONTRACTOR SHALL BE RESPONSIBLE FOR ALL SHEETMETAL TRANSITIONS AT AIR TERMINAL UNITS, FANS, COILS, AND OTHER SIMILAR HVAC EQUIPMENT.
- 11. ALL OPEN ENDED DUCTS IN THE CEILING PLENUM SHALL BE UNOBSTRUCTED FOR A MINIMUM DISTANCE OF 24" FROM THE OPENING TO ALLOW FREE AIR FLOW AND SHALL HAVE 3/4" WIRE MESH SCREENING.
- 12. ALL TRANSFER DUCTS SHALL BE INTERNALLY LINED.
- 13. ALL MISCELLANEOUS STRUCTURAL SUPPORTS REQUIRED FOR HVAC EQUIPMENT INSTALLATION SHALL BE PROVIDED BY HVAC SUBCONTRACTOR.
- 14. EXACT LOCATION OF CEILING DIFFUSERS, GRILLES AND REGISTERS TO BE DETERMINED BY ARCHITECTURAL REFLECTED CEILING PLAN.
- 15. INSTALL ALL PIPING BELOW DUCTWORK UNLESS CLEARANCE CONDITION REQUIRES PIPING TO BE ABOVE.
- 16. EXACT ELEVATION FOR SIDE WALL DIFFUSERS, REGISTERS AND GRILLES SHALL BE APPROVED BY THE ARCHITECT BEFORE INSTALLATION.
- 17. UNLESS OTHERWISE NOTED, ALL PIPING RUNOUTS SHALL BE 3/4"
- 18. ALL EXPOSED EQUIPMENT (REGISTERS, UNIT HEATERS, ETC.) SHALL HAVE COLORS SELECTED BY THE ARCHITECT, UNLESS NOTED OTHERWISE.
- 19. HVAC SUBCONTRACTOR SHALL BLANK OFF AND INSULATE ALL UNUSED LOUVER AREA.
- 20. PITCH AIR INTAKE PLENUMS AND PROVIDE DRAIN TO NEAREST FLOOR DRAIN.
- 21. ALL REGISTERS, GRILLES AND DIFFUSERS LOCATED IN WALLS NEAR FLOOR SHALL BE HEAVY-DUTY TYPE DESIGNED TO WITHSTAND RUGGED IMPACT. REFER TO SCHEDULE. THE SECTION OF DUCTWORK BEHIND THE AIR DEVICE SHALL BE PAINTED FLAT BLACK.
- 22. EXACT LOCATION OF THERMOSTAT TO BE COORDINATED WITH FINAL LOCATION OF WALL MOUNTED ARCHITECTURAL AND ELECTRICAL EQUIPMENT.
- 23. ALL MAIN BRANCH PIPES FROM RISERS SHALL HAVE ISOLATION VALVES NEAR SHAFTS. PROVIDE SHUT-OFF VALVES AT EACH SUPPLY BRANCH AND COMBINATION BALANCING SHUT-OFF VALVE AT EACH RETURN BRANCH.
- 24. PROVIDE FLEXIBLE CONNECTOR ON INTAKES AND DISCHARGES OF ALL AIR HANDLING UNITS.
- 25. REFRIGERATION PIPING SIZED BY UNIT MANUFACTURER. SUBMIT CALCULATIONS TO ENGINEER FOR APPROVAL.
- 26. DUCT MOUNTED SMOKE DETECTOR - FURNISHED AND WIRED BY THE ELECTRICAL CONTRACTOR, INSTALLED BY THE HVAC CONTRACTOR.
- 27. ROOF OPENINGS SHALL BE SIZED FROM APPROVED SHOP DRAWINGS.
- 28. ALL FLOOR MOUNTED MECHANICAL EQUIPMENT, BOILERS, PUMPS, AIR HANDLERS, ETC. SHALL HAVE A CONCRETE PAD 4" HIGH AND 6" BEYOND EQUIPMENT FOOT PRINT ON ALL FOUR SIDES. CONCRETE PADS SHALL BE SIZE FROM APPROVED SHOP DRAWINGS.
- 29. ALL DAMPER MOTORS SHALL BE 24 VOLT.
- 30. PROVIDE DUCT MOUNTED SMOKE DAMPERS AT ALL SMOKE BARRIERS. REFER TO ARCH. DRAWINGS FOR LOCATION. SMOKE DAMPERS SHALL BE CLOSED AND ASSOCIATED EXH. FAN OR AHU SHALL BE SHUT-DOWN UPON DETECTION OF SMOKE AS SENSED BY AREA SMOKE DETECTORS. DAMPERS SHALL BE RUSKIN TYPE SD 60 OR EQUAL.

DEMOLITION NOTES

- 1. EXISTING WORK INDICATED TO BE DEMOLISHED SHALL BE REMOVED AND DISPOSED OF.
- 2. [Symbol] DEMOLITION

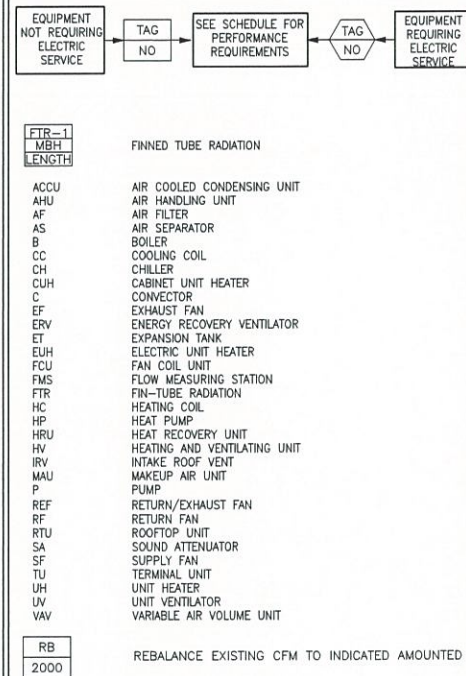
ABBREVIATIONS

Table with 2 columns: Abbreviation and Description. Includes entries like ACD (AUTOMATIC CONTROL DAMPER), AFF (ACCESS DOOR), AFH (ABOVE FINISHED FLOOR), etc.

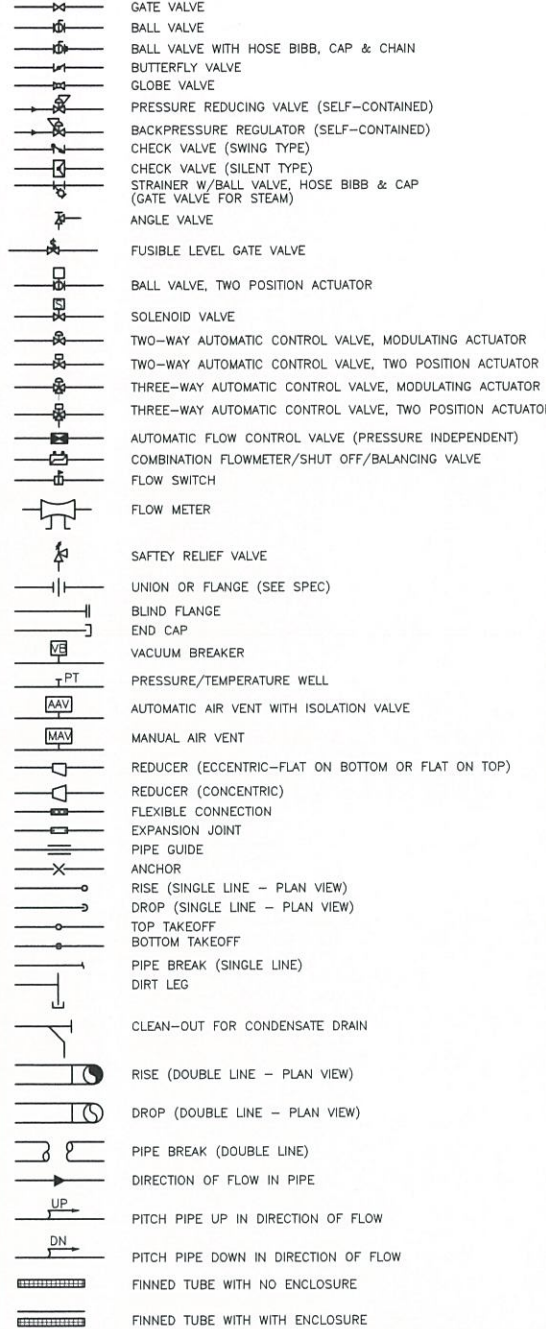
PIPING LEGEND

Table with 2 columns: Piping Symbol and Description. Includes CD (CONDENSATE DRAIN), HWS (HOT WATER SUPPLY), HWR (HOT WATER RETURN), etc.

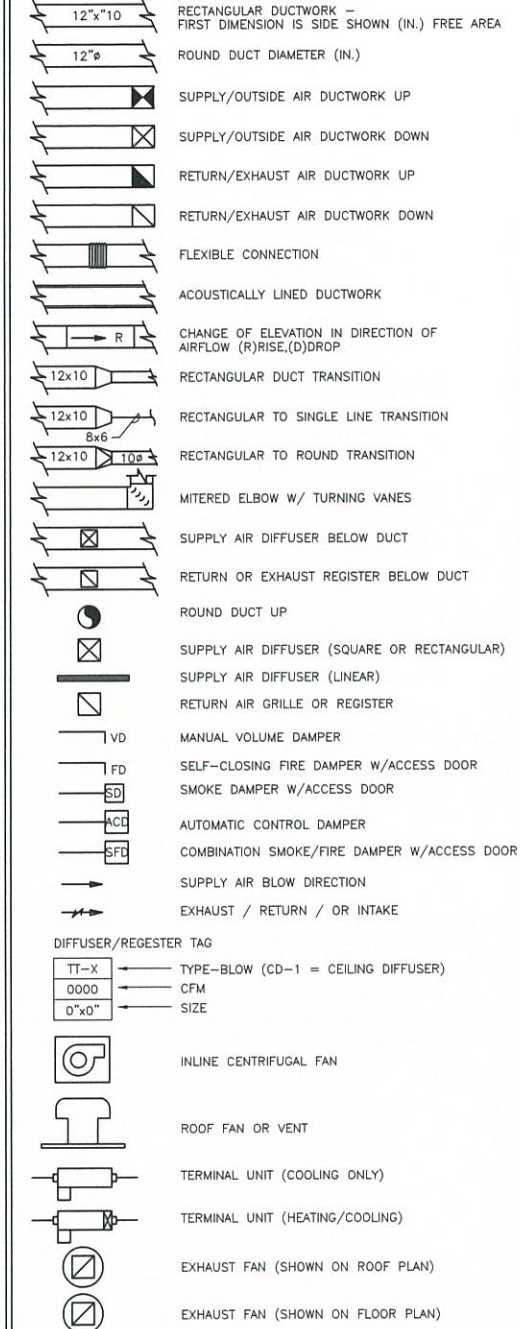
EQUIPMENT TAG SYMBOLS & ABBREVIATIONS



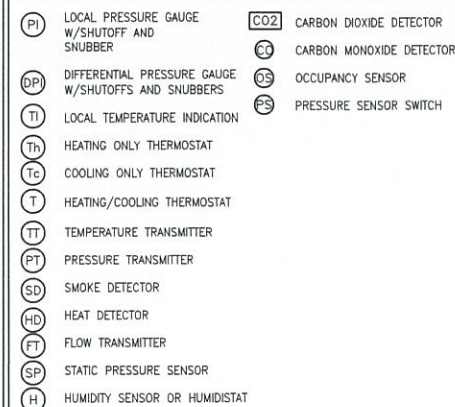
VALVES AND ACCESSORIES



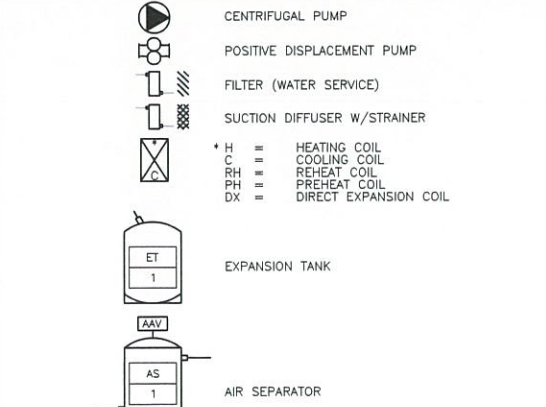
DUCTWORK LEGEND/SYMBOLS



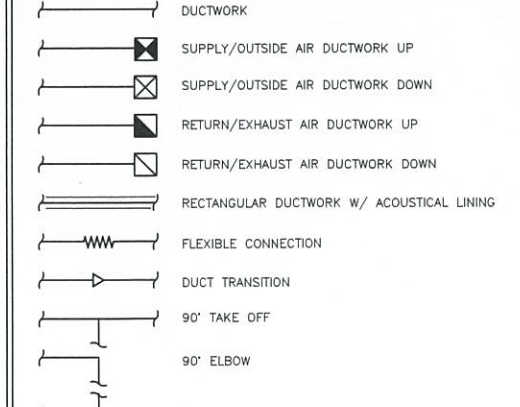
INSTRUMENTATION



FLOW DIAGRAM EQUIPMENT SYMBOLS



SINGLE LINE DUCTWORK



PREPARED BY



REGISTERED PROFESSIONAL

NOT FOR CONSTRUCTION (CONCEPTUAL)

SUBCONSULTANT



Mechanical/Electrical Engineers 150 Grossman Drive, Suite 309 Braintree, Massachusetts 02184 617.328-9215 web: www.swr.com

PROJECT

Taunton Wastewater Treatment Facility Improvements

Taunton, MA

TITLE

HVAC Hvac Legend and General Notes

Table with 3 columns: NO., REVISIONS, DATE

Table with 2 columns: DRAWN BY (RLB), DESIGNED BY (RHB), CHECKED BY (RHB), ISSUE DATE (06/19/2020), BETA JOB NO. (6050)

SCALE

NONE

For Review Only

SHEET NO.

H-0.1







































