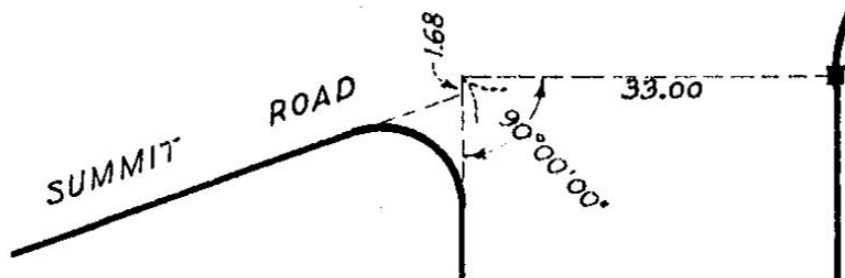
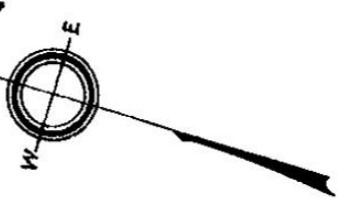


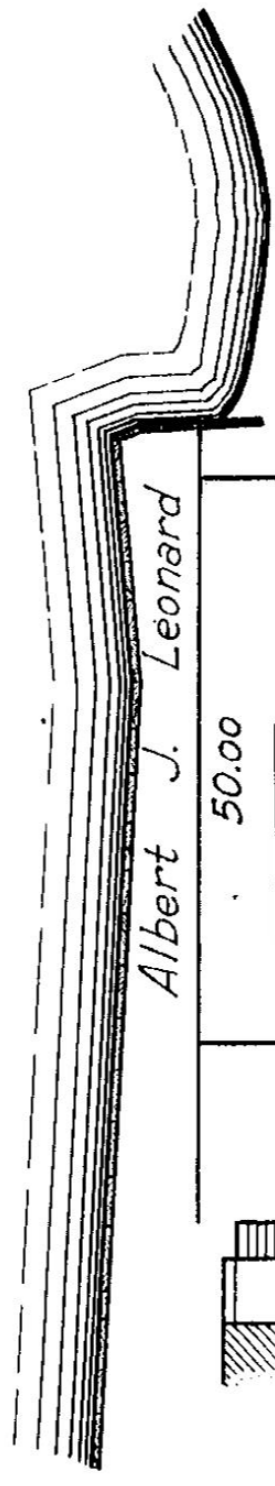
PLAN OF LAND IN HULL

Lewis W. Perkins, Engineer

APRIL 6, 1937
THIS PLAN FILED WITH
CERTIFICATE No. 6682

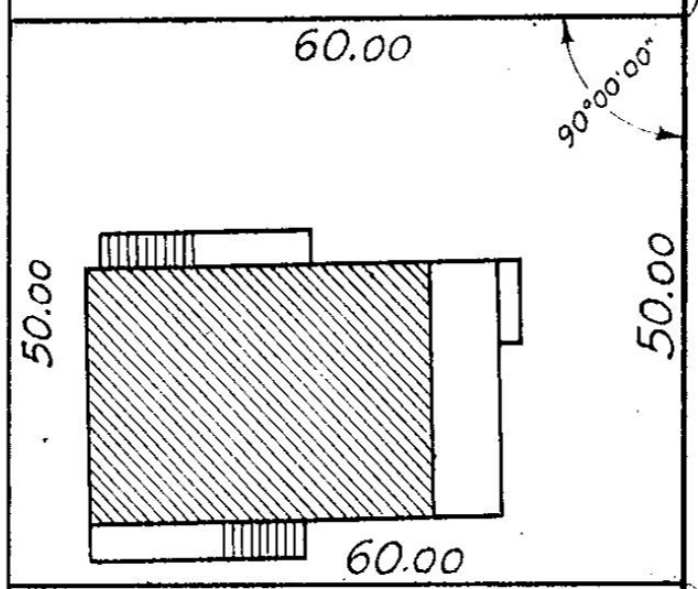


WEIR RIVER

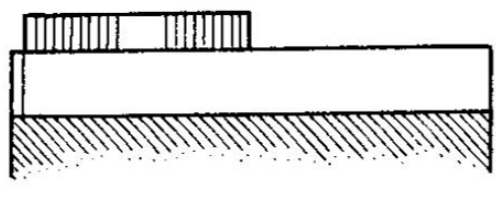


Jennie M. Pease

Albert J. Leonard



Elizabeth C. Cotter



217.48

260.27

BAY STREET

ISLAND VIEW

ROAD

Copy of part of plan
filed in
LAND REGISTRATION OFFICE
APRIL 21, 1937
Scale of this plan 20 feet to an inch
C. B. Humphrey, Engineer for Court