

①
1"=20'

2/8/2022
JW.PD
BAY ST. MISC
INVERTS

700ML
38-MM
23-CB
3 MIN. CB
64 75MM

12" MM
5-CB
1- MISSO CB

HUC
BAY ST

BAY STREET - HOUL INVERTS

#1814
E 71000
7.60
10" PVC
8" PVC
8" PVC
COULDS BY CR

#1815
JMG
10" PVC
6.12 E TROUW

1819
6" CAP
1.70 OUT
2600 BOS

5MM
4.80
8" VC w/out
E TROUW

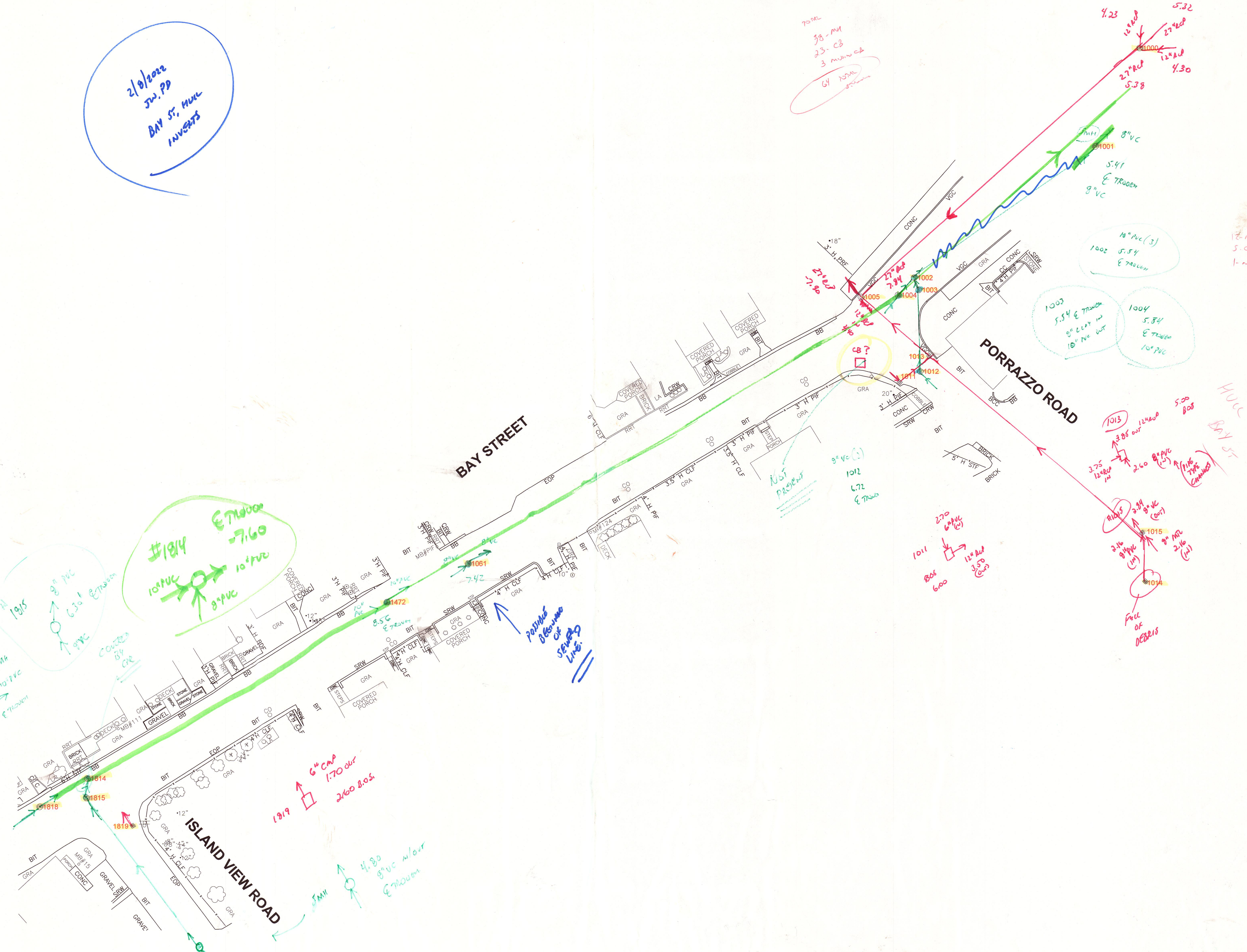
8" VC (S)
1012
6.72
E TROUW

10" PVC (S)
1002
5.54
E TROUW
1003
5.54 E TROUW
8" CLAY IN
10" PVC OUT
1004
5.54
E TROUW
10" PVC

1011
6.00
2.70
6" PVC (S)
12" PVC (S)

1013
3.25
12" PVC IN
3.25 OUT
2.60
8" PVC (S)
12" PVC (S)

1014
2.16
8" PVC (S)
12" PVC (S)
1015
2.16
8" PVC (S)
12" PVC (S)
Fall of DEBRIS



BAY STREET

PORRAZZO ROAD

ISLAND VIEW ROAD

NOT PRESENT

POSSIBLE
REVISION
OF
SEWER
LINE