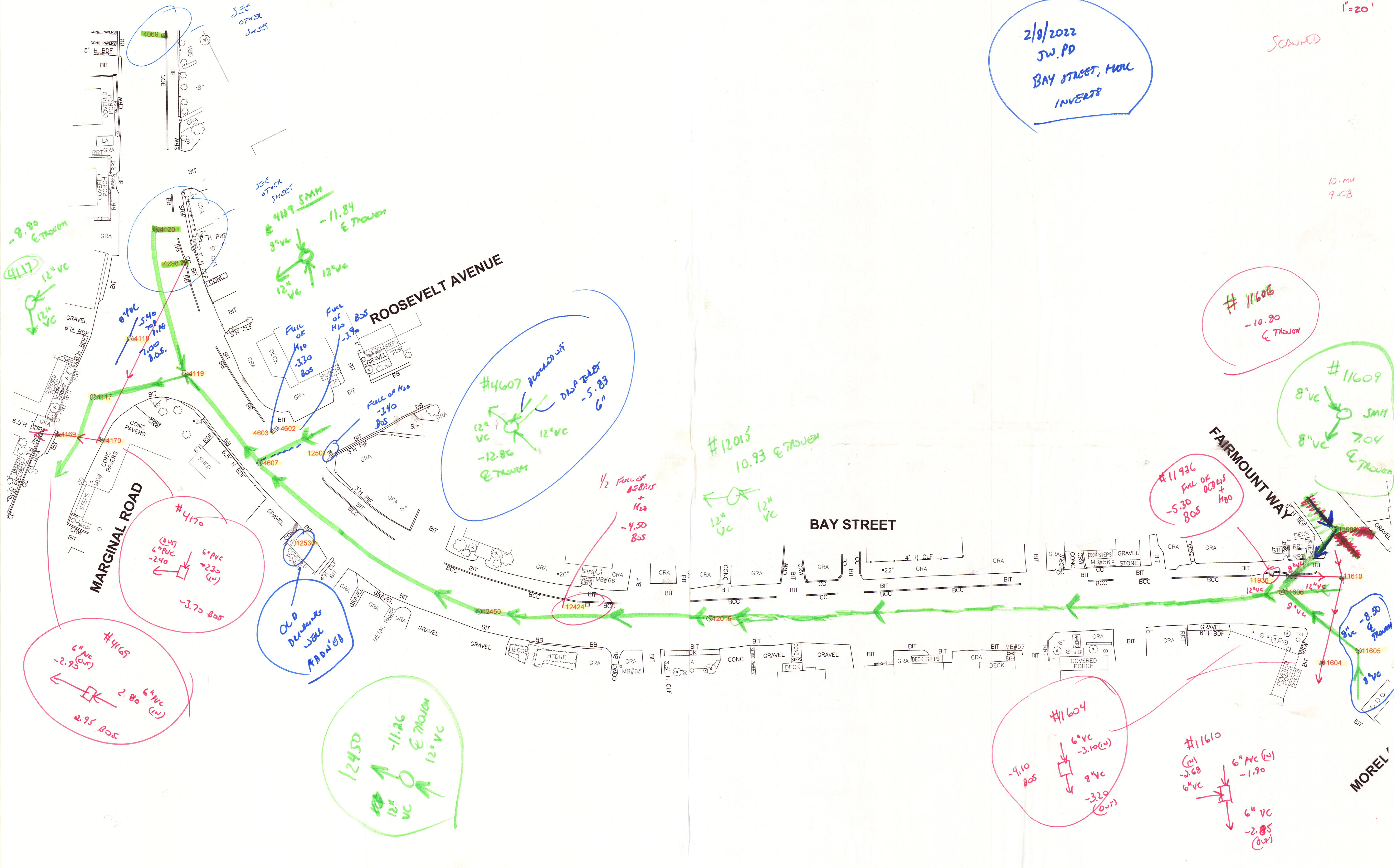


2/8/2022  
JW.PD  
BAY STREET, HOUL  
INVERTS

SCANNED

10-MU  
9-CB



SEE OTHER SHEET

SEE OTHER SHEET

#4119 8" VC  
-11.84 E TROUGH  
12" VC

#4607  
12" VC  
-12.86 E TROUGH  
12" VC

#12015  
10.93 E TROUGH  
12" VC

#11608  
-10.90 E TROUGH

#11609  
8" VC  
7.04 E TROUGH  
8" VC

#11936  
Full of debris + H<sub>2</sub>O  
-5.30 BOS

#4170  
6" VC  
-2.40  
6" VC  
-2.30  
-3.70 BOS

Old Documents with Address

#4169  
6" VC  
-2.95  
6" VC  
-2.80  
2.95 BOS

#12450  
-11.26 E TROUGH  
12" VC

#11604  
6" VC  
-3.10 (IN)  
8" VC  
-3.20 (OUT)  
-4.10 BOS

#11610  
6" VC  
-1.90  
6" VC  
-2.85 (OUT)

MOREL