

COUNTY OF BERKSHIRE
 MIDDLE DISTRICT REGISTRY OF DEEDS
 PLAN RECEIVED AND FILED FOR RECORD
 June 13, 1997 at 12:25 PM
 IN DRAWER Plot E-95
 SEE INSTRUMENT RECORDED IN
 BOOK PAGE
 Mary K. O'Brien
 REGISTER
 Dr. Elaine C. O'Brien
 Assistant Registrar
 FOR REGISTRY USE ONLY

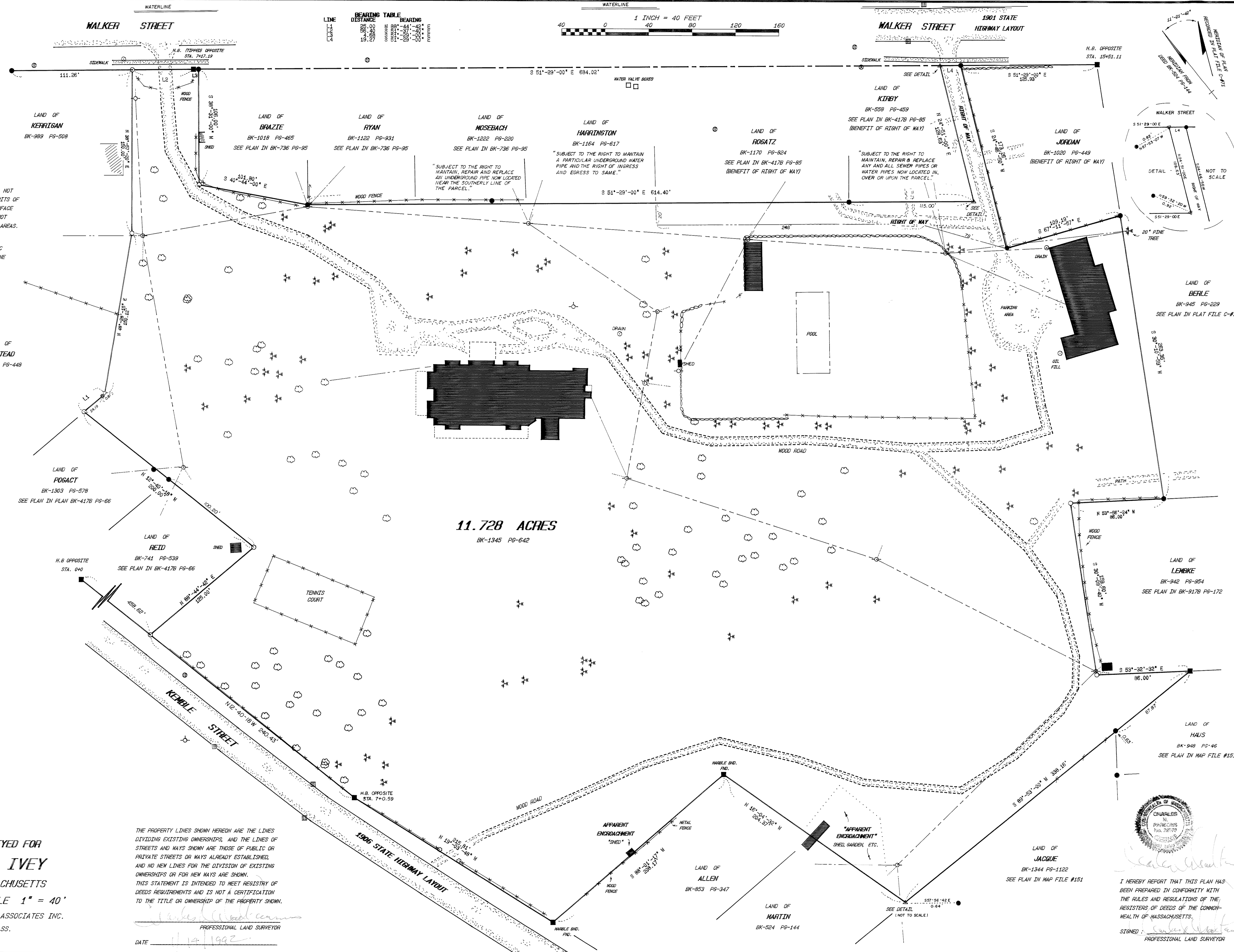
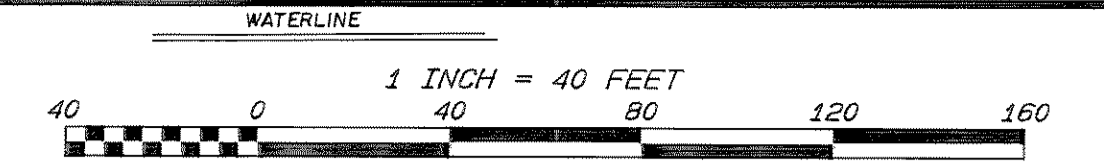
THIS PARCEL IS SUBJECT TO AND WITH THE BENEFIT OF ALL RIGHTS RESTRICTIONS, CONDITIONS, EASEMENTS, LEASES, ENCUMBRANCES AND APPURTENANCES OF RECORD.

UNLESS OTHERWISE NOTED HEREON, THIS SURVEY PLAN SHALL NOT BE CONSTRUED AS DEPICTING THE PRESENCE, ABSENCE, OR LIMITS OF ANY OR ALL REGULATED WETLANDS OR FLOODPLAINS. ANY SURFACE WATER FEATURES SHOWN, SUCH AS STREAMS OR PONDS, ARE NOT REPRESENTED AS INDICATING LIMITS OF WETLAND RESOURCE AREAS.

SEE EASEMENT TO SOUTHERN BERKSHIRE POWER AND ELECTRIC COMPANY IN BK-857 PG-513, AND TO NEW ENGLAND TELEPHONE AND TELEGRAPH COMPANY IN BK-571 PG-110.

BEARINGS TABLE

LINE	DISTANCE	BEARING
1	111.26'	S 51°-29'-00" E 694.02'
2	100.20'	N 81°-41'-02" E 125.00'
3	240.45'	N 12°-40'-18" W 240.45'
4	240.45'	S 88°-29'-10" W 238.16'
5	61.97'	S 53°-32'-32" E 86.00'
6	86.00'	N 53°-28'-24" N 86.00'
7	115.00'	S 67°-41'-25" E 115.00'
8	115.00'	S 51°-29'-00" E 614.40'
9	115.00'	S 51°-29'-00" E 614.40'
10	115.00'	S 51°-29'-00" E 614.40'
11	115.00'	S 51°-29'-00" E 614.40'
12	115.00'	S 51°-29'-00" E 614.40'
13	115.00'	S 51°-29'-00" E 614.40'
14	115.00'	S 51°-29'-00" E 614.40'
15	115.00'	S 51°-29'-00" E 614.40'
16	115.00'	S 51°-29'-00" E 614.40'
17	115.00'	S 51°-29'-00" E 614.40'
18	115.00'	S 51°-29'-00" E 614.40'
19	115.00'	S 51°-29'-00" E 614.40'
20	115.00'	S 51°-29'-00" E 614.40'
21	115.00'	S 51°-29'-00" E 614.40'
22	115.00'	S 51°-29'-00" E 614.40'
23	115.00'	S 51°-29'-00" E 614.40'
24	115.00'	S 51°-29'-00" E 614.40'
25	115.00'	S 51°-29'-00" E 614.40'
26	115.00'	S 51°-29'-00" E 614.40'
27	115.00'	S 51°-29'-00" E 614.40'
28	115.00'	S 51°-29'-00" E 614.40'
29	115.00'	S 51°-29'-00" E 614.40'
30	115.00'	S 51°-29'-00" E 614.40'
31	115.00'	S 51°-29'-00" E 614.40'
32	115.00'	S 51°-29'-00" E 614.40'
33	115.00'	S 51°-29'-00" E 614.40'
34	115.00'	S 51°-29'-00" E 614.40'
35	115.00'	S 51°-29'-00" E 614.40'
36	115.00'	S 51°-29'-00" E 614.40'
37	115.00'	S 51°-29'-00" E 614.40'
38	115.00'	S 51°-29'-00" E 614.40'
39	115.00'	S 51°-29'-00" E 614.40'
40	115.00'	S 51°-29'-00" E 614.40'
41	115.00'	S 51°-29'-00" E 614.40'
42	115.00'	S 51°-29'-00" E 614.40'
43	115.00'	S 51°-29'-00" E 614.40'
44	115.00'	S 51°-29'-00" E 614.40'
45	115.00'	S 51°-29'-00" E 614.40'
46	115.00'	S 51°-29'-00" E 614.40'
47	115.00'	S 51°-29'-00" E 614.40'
48	115.00'	S 51°-29'-00" E 614.40'
49	115.00'	S 51°-29'-00" E 614.40'
50	115.00'	S 51°-29'-00" E 614.40'
51	115.00'	S 51°-29'-00" E 614.40'
52	115.00'	S 51°-29'-00" E 614.40'
53	115.00'	S 51°-29'-00" E 614.40'
54	115.00'	S 51°-29'-00" E 614.40'
55	115.00'	S 51°-29'-00" E 614.40'
56	115.00'	S 51°-29'-00" E 614.40'
57	115.00'	S 51°-29'-00" E 614.40'
58	115.00'	S 51°-29'-00" E 614.40'
59	115.00'	S 51°-29'-00" E 614.40'
60	115.00'	S 51°-29'-00" E 614.40'
61	115.00'	S 51°-29'-00" E 614.40'
62	115.00'	S 51°-29'-00" E 614.40'
63	115.00'	S 51°-29'-00" E 614.40'
64	115.00'	S 51°-29'-00" E 614.40'
65	115.00'	S 51°-29'-00" E 614.40'
66	115.00'	S 51°-29'-00" E 614.40'
67	115.00'	S 51°-29'-00" E 614.40'
68	115.00'	S 51°-29'-00" E 614.40'
69	115.00'	S 51°-29'-00" E 614.40'
70	115.00'	S 51°-29'-00" E 614.40'
71	115.00'	S 51°-29'-00" E 614.40'
72	115.00'	S 51°-29'-00" E 614.40'
73	115.00'	S 51°-29'-00" E 614.40'
74	115.00'	S 51°-29'-00" E 614.40'
75	115.00'	S 51°-29'-00" E 614.40'
76	115.00'	S 51°-29'-00" E 614.40'
77	115.00'	S 51°-29'-00" E 614.40'
78	115.00'	S 51°-29'-00" E 614.40'
79	115.00'	S 51°-29'-00" E 614.40'
80	115.00'	S 51°-29'-00" E 614.40'
81	115.00'	S 51°-29'-00" E 614.40'
82	115.00'	S 51°-29'-00" E 614.40'
83	115.00'	S 51°-29'-00" E 614.40'
84	115.00'	S 51°-29'-00" E 614.40'
85	115.00'	S 51°-29'-00" E 614.40'
86	115.00'	S 51°-29'-00" E 614.40'
87	115.00'	S 51°-29'-00" E 614.40'
88	115.00'	S 51°-29'-00" E 614.40'
89	115.00'	S 51°-29'-00" E 614.40'
90	115.00'	S 51°-29'-00" E 614.40'
91	115.00'	S 51°-29'-00" E 614.40'
92	115.00'	S 51°-29'-00" E 614.40'
93	115.00'	S 51°-29'-00" E 614.40'
94	115.00'	S 51°-29'-00" E 614.40'
95	115.00'	S 51°-29'-00" E 614.40'
96	115.00'	S 51°-29'-00" E 614.40'
97	115.00'	S 51°-29'-00" E 614.40'
98	115.00'	S 51°-29'-00" E 614.40'
99	115.00'	S 51°-29'-00" E 614.40'
100	115.00'	S 51°-29'-00" E 614.40'

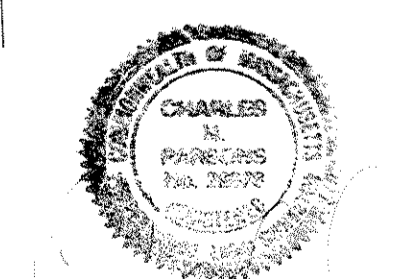


- LEGEND
- UTILITY LINES
 - - - FENCE
 - STONE WALL
 - LIGHT POLE
 - GAS VALVE
 - FIRE HYDRANT
 - SEWER MANHOLE
 - CATCH BASIN
 - UTILITY POLE
 - CONIFEROUS TREE
 - POINT COMPUTED
 - BOUND FOUND
 - IRON PIPE FOUND
 - IRON PIPE TO BE SET
 - GATE POST
 - DECIDUOUS TREE
 - GUY WIRE

PLAN OF LAND SURVEYED FOR
ARTHUR J. IVEY
 IN LENOX, MASSACHUSETTS
 JANUARY - 1992 SCALE 1" = 40'
 KELLY - GRANGER - PARSONS AND ASSOCIATES INC.
 GREAT BARRINGTON, MASS.

THE PROPERTY LINES SHOWN HEREON ARE THE LINES DIVIDING EXISTING OWNERSHIPS, AND THE LINES OF STREETS AND WAYS SHOWN ARE THOSE OF PUBLIC OR PRIVATE STREETS OR WAYS ALREADY ESTABLISHED, AND NO NEW LINES FOR THE DIVISION OF EXISTING OWNERSHIPS OR FOR NEW WAYS ARE SHOWN. THIS STATEMENT IS INTENDED TO MEET REGISTRY OF DEEDS REQUIREMENTS AND IS NOT A CERTIFICATION TO THE TITLE OR OWNERSHIP OF THE PROPERTY SHOWN.

PROFESSIONAL LAND SURVEYOR
 DATE 1/14/1992



I HEREBY REPORT THAT THIS PLAN HAS BEEN PREPARED IN CONFORMITY WITH THE RULES AND REGULATIONS OF THE REGISTRY OF DEEDS OF THE COMMONWEALTH OF MASSACHUSETTS.
 SIGNED: Charles W. Parsons
 PROFESSIONAL LAND SURVEYOR