

NOT  
OFFICIAL  
COPY

NOT  
OFFICIAL

Norfolk Registry of Deeds  
Dedham, Mass.  
Received Jan. 21, 1980 with Lic.  
Commonth of Mass. & Dept. Environmtl.  
Quality Eng. to License  
Pl. No. 71-B of 2-1980 Bk. 5699 Pg. 654  
Attest: *Boughton* Register

I certify that this plan has  
been prepared in conformity with  
the rules and regulations of the  
Registers of Deeds of the  
Commonwealth of Massachusetts.

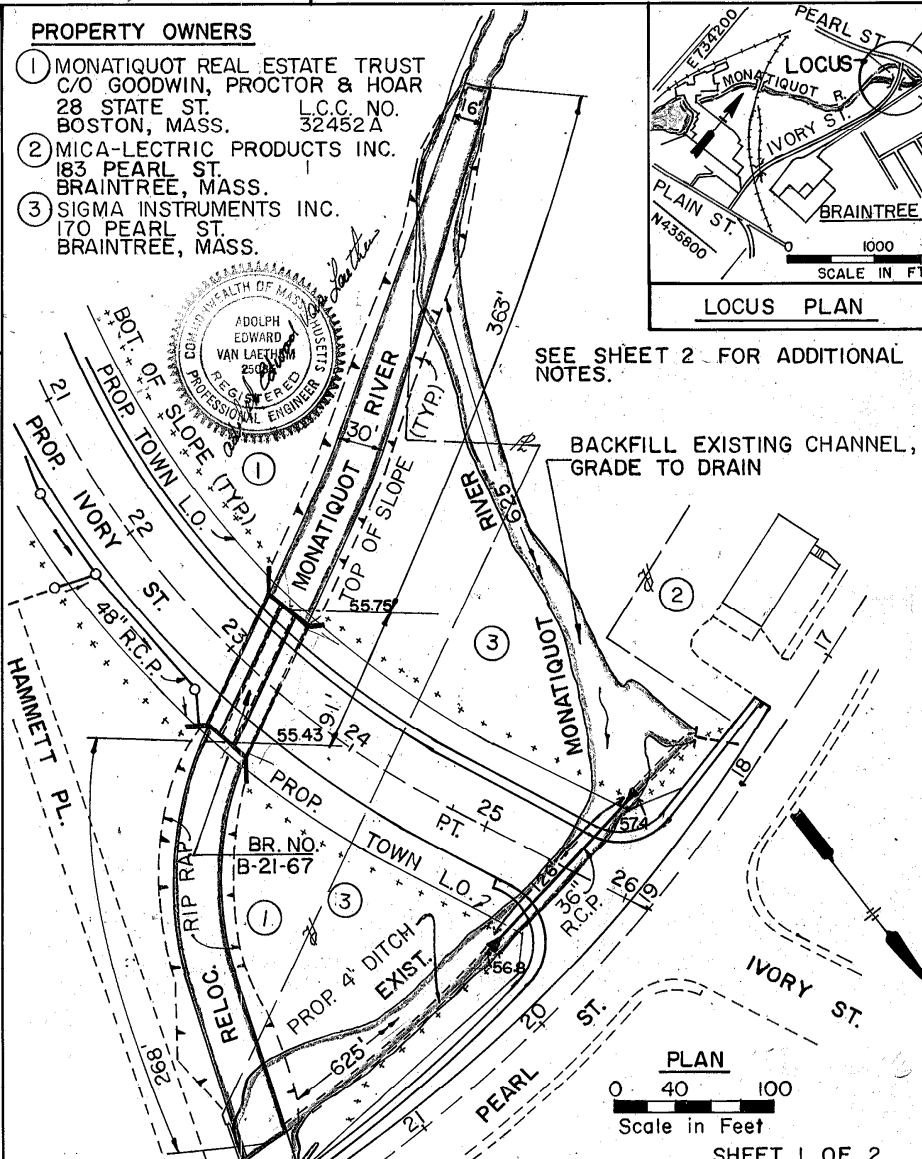
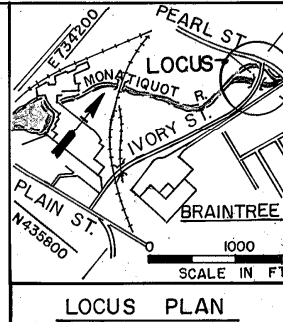


6/7/79  
Date

*Adolph Edward Van Laethem*  
Signature

**PROPERTY OWNERS**

- ① MONATIQUOT REAL ESTATE TRUST  
C/O GOODWIN, PROCTOR & HOAR  
28 STATE ST. L.C.C. NO.  
BOSTON, MASS. 32452A
- ② MICA-LECTRIC PRODUCTS INC.  
183 PEARL ST.  
BRAINTREE, MASS.
- ③ SIGMA INSTRUMENTS INC.  
170 PEARL ST.  
BRAINTREE, MASS.



SEE SHEET 2 FOR ADDITIONAL NOTES.

BACKFILL EXISTING CHANNEL,  
GRADE TO DRAIN

PLAN  
0 40 100  
Scale in Feet

SHEET 1 OF 2

INVERT ELEV = 53.0

PLAN ACCOMPANYING PETITION OF  
COMMONWEALTH OF MASSACHUSETTS  
DEPARTMENT OF PUBLIC WORKS  
TO CONSTRUCT AND MAINTAIN A BRIDGE  
AND RELOCATE A PORTION OF THE  
MONATIQUOT RIVER IN THE TOWN OF  
BRAINTREE, COUNTY OF NORFOLK, MASS.

LICENSE PLAN NO. 621  
Approved by Department of Environmental Quality Engineering  
of Massachusetts JANUARY 11, 1980  
*John J. Denny* COMMISSIONER  
CHIEF ENGINEER