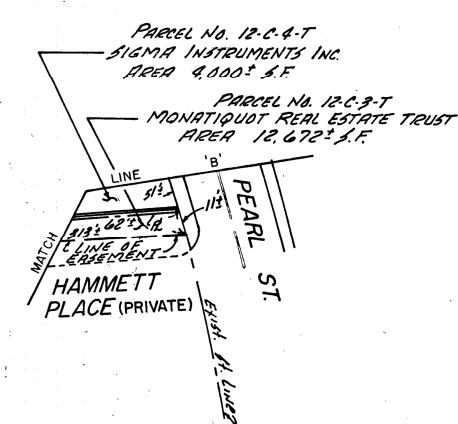
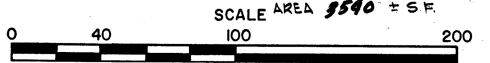
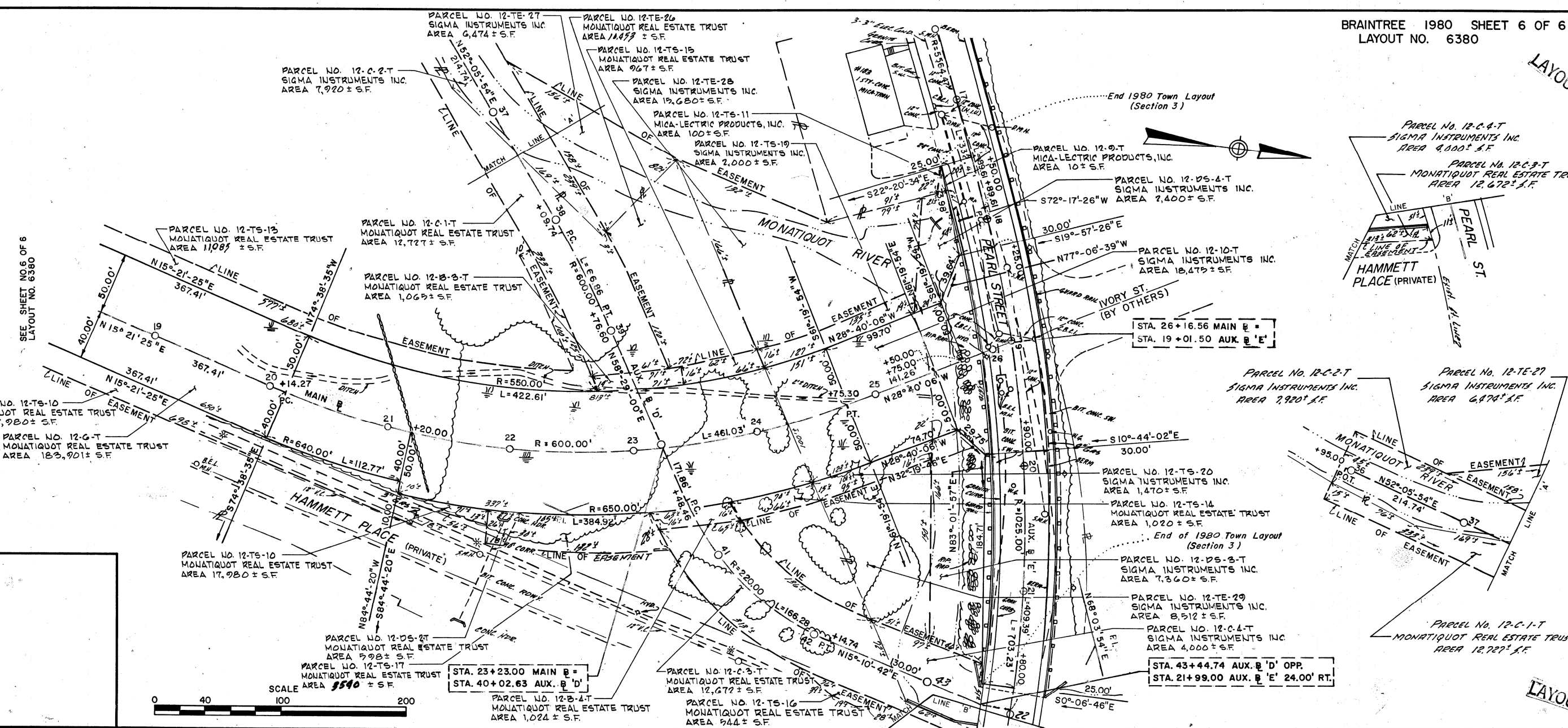


LAYOUT

SEE SHEET NO. 6 OF 6  
LAYOUT NO. 6380



LAYOUT

PARCEL NO. 12-TS-10  
MONAQUOT REAL ESTATE TRUST  
AREA 17,980 ± S.F.

PARCEL NO. 12-C-2-T  
SIGMA INSTRUMENTS INC.  
AREA 7,920 ± S.F.

PARCEL NO. 12-TE-26  
MONAQUOT REAL ESTATE TRUST  
AREA 1,477 ± S.F.

PARCEL NO. 12-9-T  
MICA-ELECTRIC PRODUCTS, INC.  
AREA 10 ± S.F.

PARCEL NO. 12-DS-4-T  
SIGMA INSTRUMENTS INC.  
AREA 2,400 ± S.F.

PARCEL NO. 12-C-4-T  
SIGMA INSTRUMENTS INC.  
AREA 8,000 ± S.F.

PARCEL NO. 12-C-3-T  
MONAQUOT REAL ESTATE TRUST  
AREA 12,672 ± S.F.

STA. 26+16.56 MAIN B =  
STA. 19+01.50 AUX. B 'E'

PARCEL NO. 12-C-2-T  
SIGMA INSTRUMENTS INC.  
AREA 7,920 ± S.F.

PARCEL NO. 12-TE-27  
SIGMA INSTRUMENTS INC.  
AREA 6,874 ± S.F.

PARCEL NO. 12-TS-20  
SIGMA INSTRUMENTS INC.  
AREA 1,470 ± S.F.

PARCEL NO. 12-TS-14  
MONAQUOT REAL ESTATE TRUST  
AREA 1,020 ± S.F.

End of 1980 Town Layout  
(Section 3)

PARCEL NO. 12-DS-3-T  
SIGMA INSTRUMENTS INC.  
AREA 7,360 ± S.F.

PARCEL NO. 12-TE-29  
SIGMA INSTRUMENTS INC.  
AREA 8,512 ± S.F.

PARCEL NO. 12-C-4-T  
SIGMA INSTRUMENTS INC.  
AREA 4,000 ± S.F.

STA. 43+44.74 AUX. B 'D' OPP.  
STA. 21+99.00 AUX. B 'E' 24.00' RT.

STA. 23+23.00 MAIN B =  
STA. 40+02.63 AUX. B 'D'

PARCEL NO. 12-B-4-T  
MONAQUOT REAL ESTATE TRUST  
AREA 1,024 ± S.F.

PARCEL NO. 12-C-3-T  
MONAQUOT REAL ESTATE TRUST  
AREA 12,672 ± S.F.

PARCEL NO. 12-TS-16  
MONAQUOT REAL ESTATE TRUST  
AREA 544 ± S.F.

PARCEL NO. 12-TS-10  
MONAQUOT REAL ESTATE TRUST  
AREA 17,980 ± S.F.

PARCEL NO. 12-DS-3-T  
MONAQUOT REAL ESTATE TRUST  
AREA 7,920 ± S.F.

PARCEL NO. 12-TS-17  
MONAQUOT REAL ESTATE TRUST  
AREA 550 ± S.F.

PARCEL NO. 12-C-1-T  
MONAQUOT REAL ESTATE TRUST  
AREA 12,727 ± S.F.

PARCEL NO. 12-B-3-T  
MONAQUOT REAL ESTATE TRUST  
AREA 1,069 ± S.F.

PARCEL NO. 12-TS-13  
MONAQUOT REAL ESTATE TRUST  
AREA 11,089 ± S.F.

PARCEL NO. 12-TE-28  
SIGMA INSTRUMENTS INC.  
AREA 19,680 ± S.F.

PARCEL NO. 12-TS-11  
MICA-ELECTRIC PRODUCTS, INC.  
AREA 100 ± S.F.

PARCEL NO. 12-TS-19  
SIGMA INSTRUMENTS INC.  
AREA 2,000 ± S.F.

PARCEL NO. 12-TE-27  
SIGMA INSTRUMENTS INC.  
AREA 6,474 ± S.F.