

A sub-div. pl. of lots 2^D and 2^E, pl. 12821, to some

D pl. 12821

NOT AN OFFICIAL COPY
NOT AN OFFICIAL COPY
Subdivision of Lot 2A shown on plan 12821
Filed with Cert. of Title No. 12250 Registry District of Norfolk County

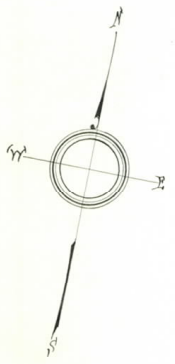
12821^B

LAND IN BRAINTREE

Scale 20 feet to an inch

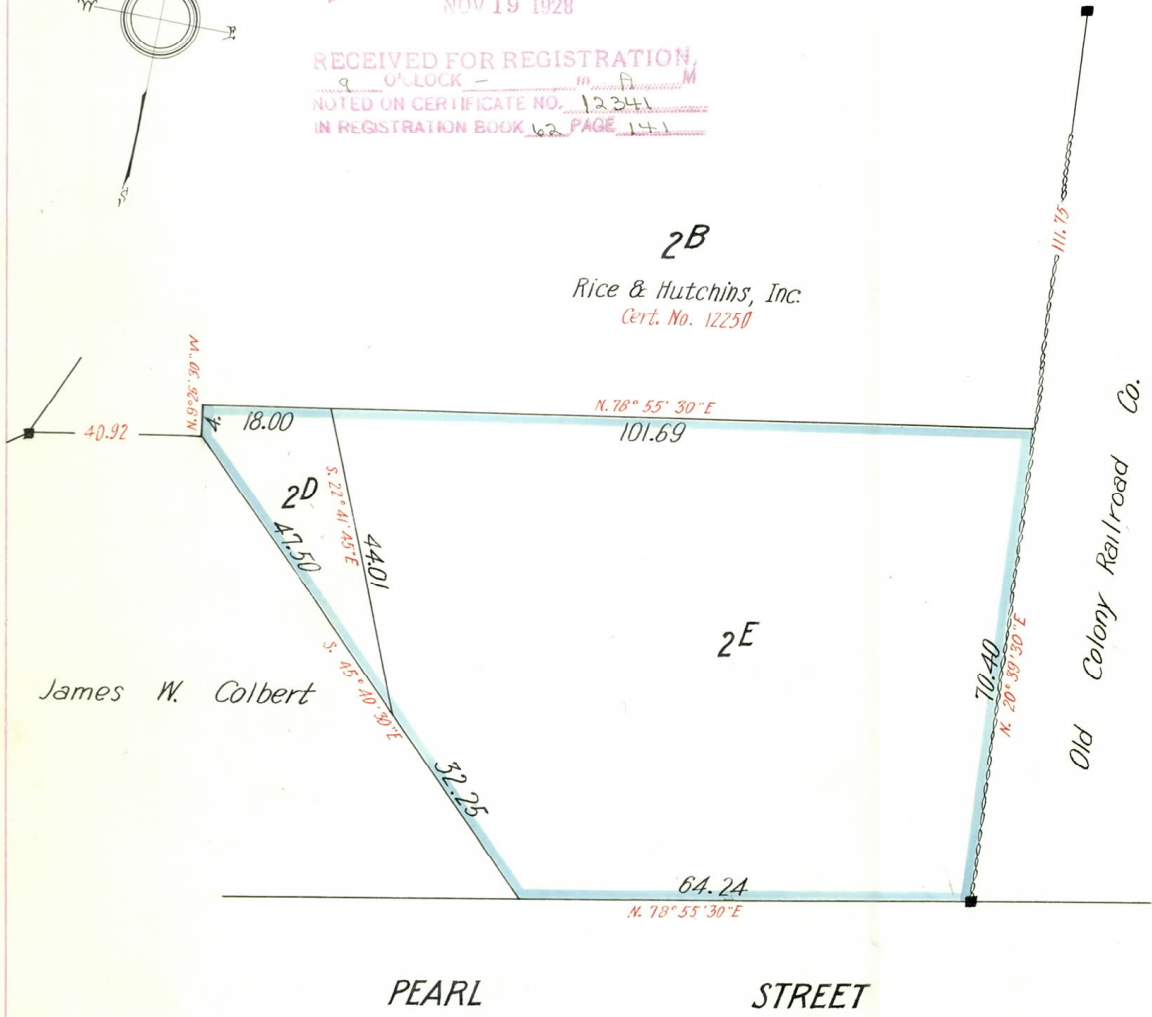
NOV. 14, 1928.

C. B. Humphrey, Engineer for Court.



Norfolk County Registry District
NOV 19 1928

RECEIVED FOR REGISTRATION
9 O'CLOCK - m D M
NOTED ON CERTIFICATE NO. 12241
IN REGISTRATION BOOK 62 PAGE 141



James W. Colbert

Separate certificates of title may be issued
for lots 2^D & 2^E as shown hereon
By the Court
Charles A. Southworth
Recorder
NOV. 14, 1928.