

NOT AN OFFICIAL COPY NOT AN OFFICIAL COPY

12821 C

Subdivision of Lot 1 shown on plan 12,821 A

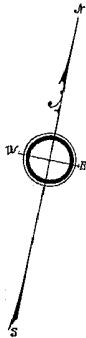
Filed with Cert. of Title No. 12,250 Registry District of Norfolk County.

LAND IN BRAINTREE

Scale 20 feet to an inch

APR. 1, 1929

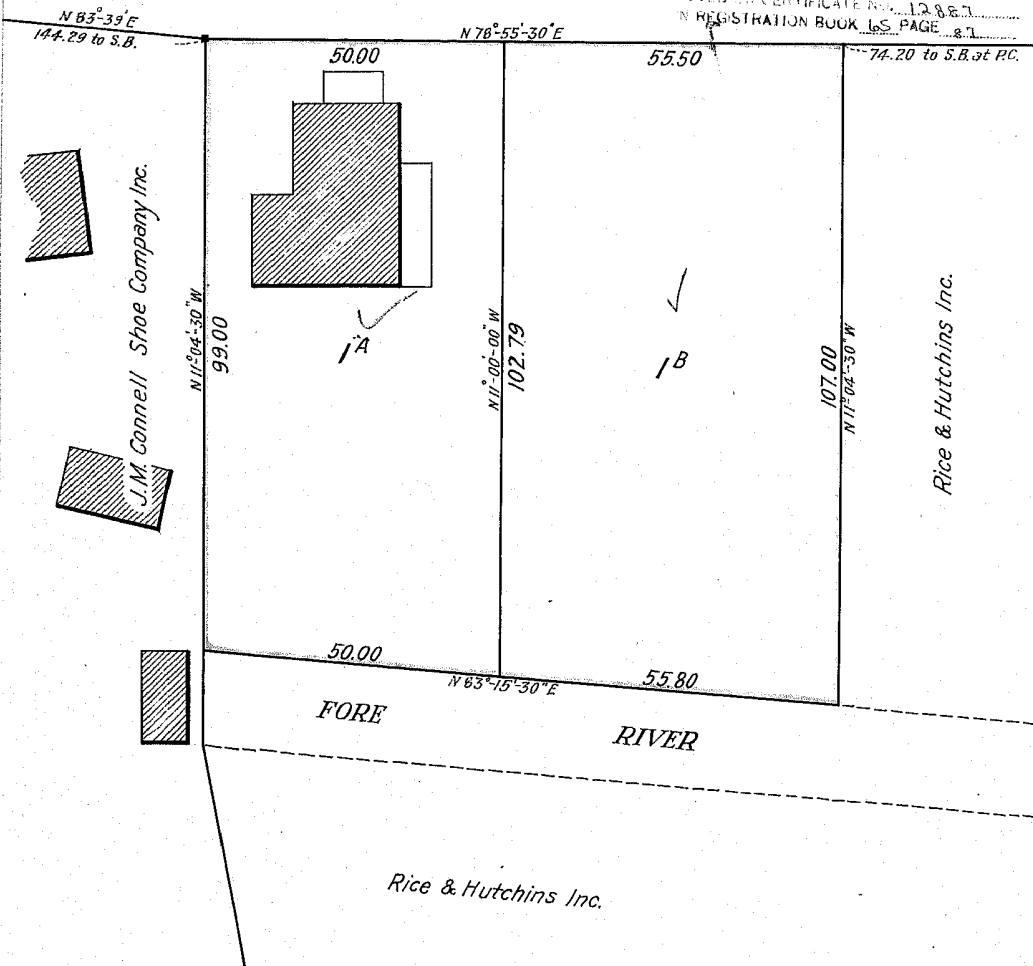
C.B. Humphrey, Engineer for Court.



PEARL

ST. Norfolk County Registry District
APR 10 1929

RECORDED FOR REGISTRATION
BOOK 18 PAGE 11
INDEXED BY CERTIFICATE NO. 12821
IN REGISTRATION BOOK 65 PAGE 81



Separate certificates of title may be issued
for lots A and B as shown hereon
By the Court

Charles Southworth
Recorder.
APR. 1, 1929