

NOT
AN
OFFICIAL
COPY

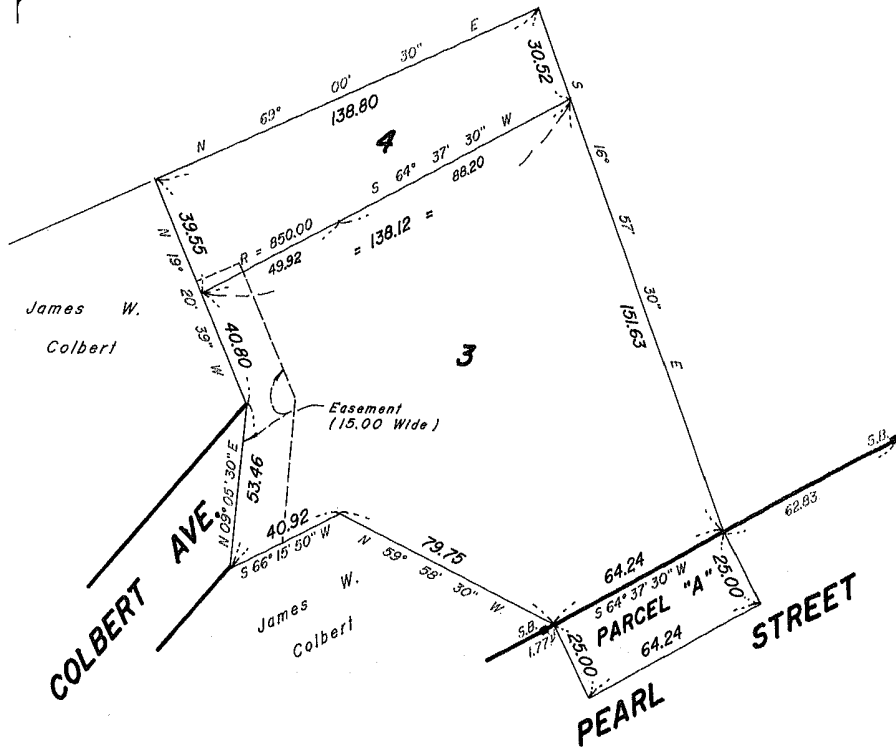
NOT
AN
OFFICIAL
COPY

SUBDIVISION PLAN OF LAND IN BRAINTREE
Andrews Survey & Engineering, Inc., Surveyors
December 3, 1993

12821D



Old Colony Railroad Co.



Subdivision of Lots 2B, 2C, and 2D, 2E
Shown on Plans 12821A and 12821B
Filed with Certs. of Title Nos. 12250 and 12341
Registry District of Norfolk County

Separate certificates of title may be issued for land
shown hereon as Lots 3 and 4, and Parcel "A".
By the Court.

Charles Crowley
Recorder

MAY 24, 1994

Abutters are shown as
on original decree plan.

Copy of part of plan
filed in
LAND REGISTRATION OFFICE
MAY 24, 1994
Scale of this plan 40 feet to an inch
Louis A. Moore, Engineer for Court

K
E
C