

NOT

NOT

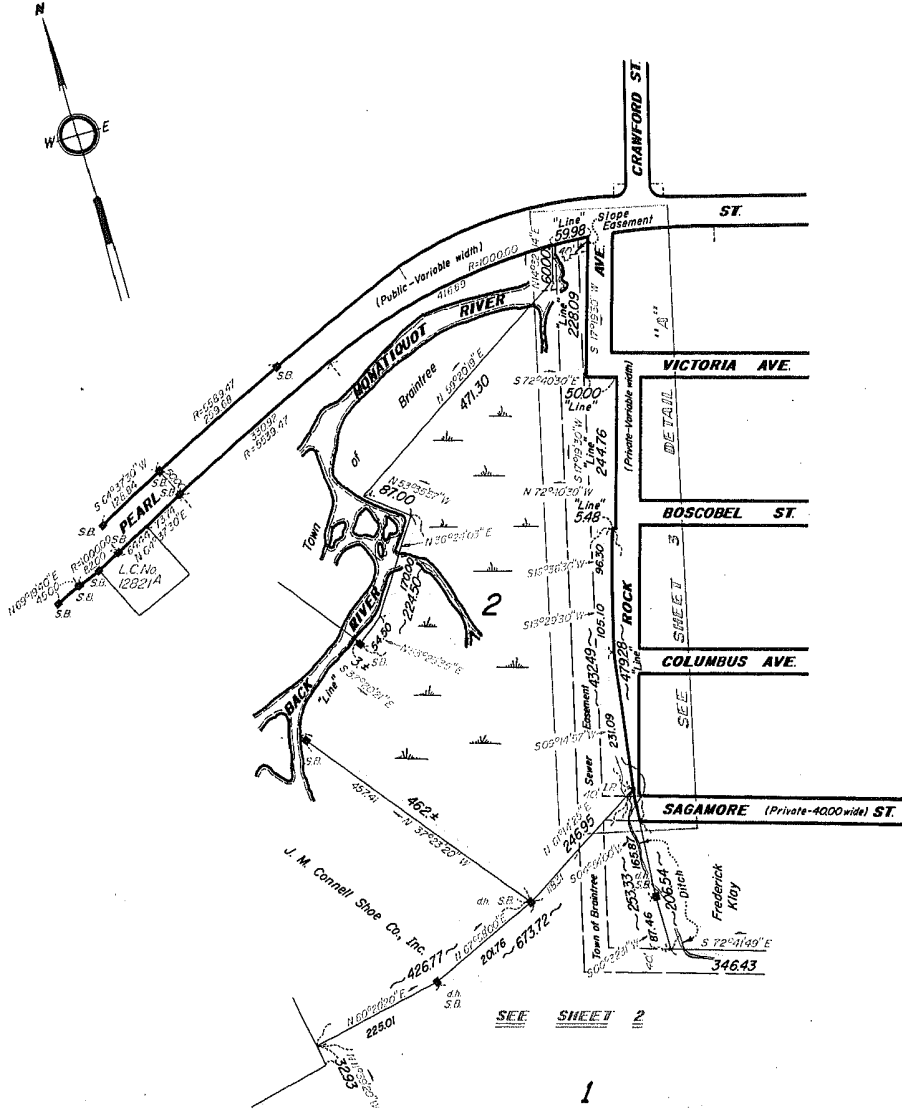
AN AN
subdivision of Official with Cert No. 026, 116 (C) I A L
COPY COPY

33012A
Sheet 1

PLAN OF LAND IN BRAINTREE

Yunits Engineering Company, Surveyors
November 20, 1963

Edwin A. Young, Surveyor
April 1, 1964



Worcester County Registry District

NOV - 5 1964

RECEIVED FOR REGISTRATION
 O'CLOCK 6 5 m P. M.
 NOTED ON CERTIFICATE NO. 76572
 IN REGISTRATION BOOK 383 PAGE 172

Locus comprises
lots 1 - 2 incl.

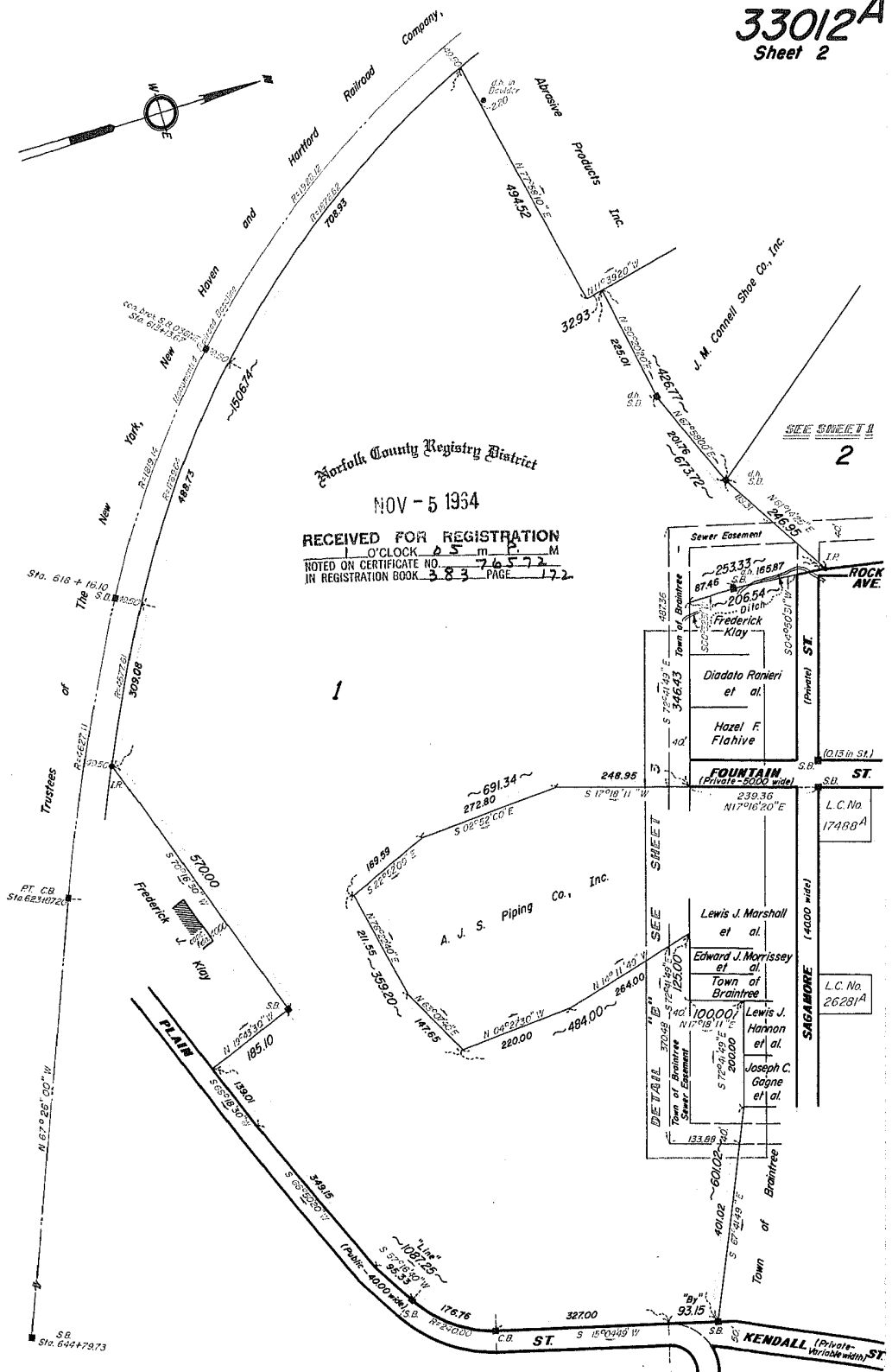
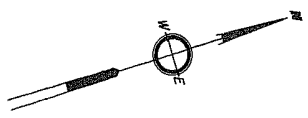
Copy of part of plans 33012A¹ & 2
 filed in
LAND REGISTRATION OFFICE
 April 14, 1964
 Scale of this plan 200 feet to an inch
 C.M. Anderson, Engineer for Court

YES cri

10-20-64
P.D. OK

NOT A N O T
 A sub Official Copy of the Official
 COPY COPY COPY COPY COPY COPY

33012A
 Sheet 2

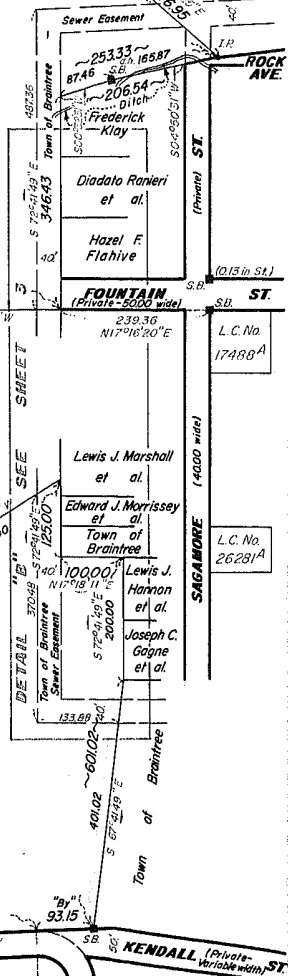


Norfolk County Registry District

NOV - 5 1934

RECEIVED FOR REGISTRATION
 1 O'CLOCK 05 m P. M.
 NOTED ON CERTIFICATE NO. 76572
 IN REGISTRATION BOOK 383 PAGE 172.

SEE SHEET 2



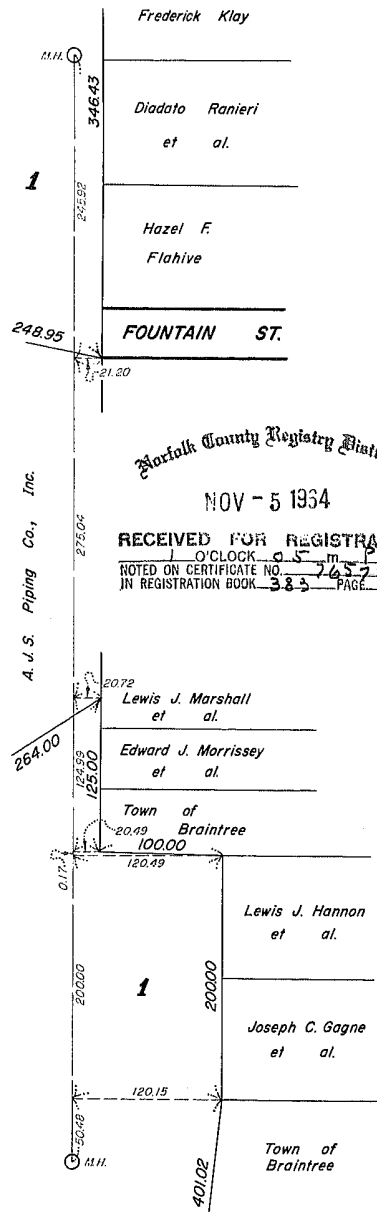
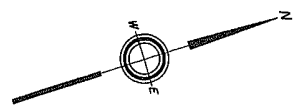
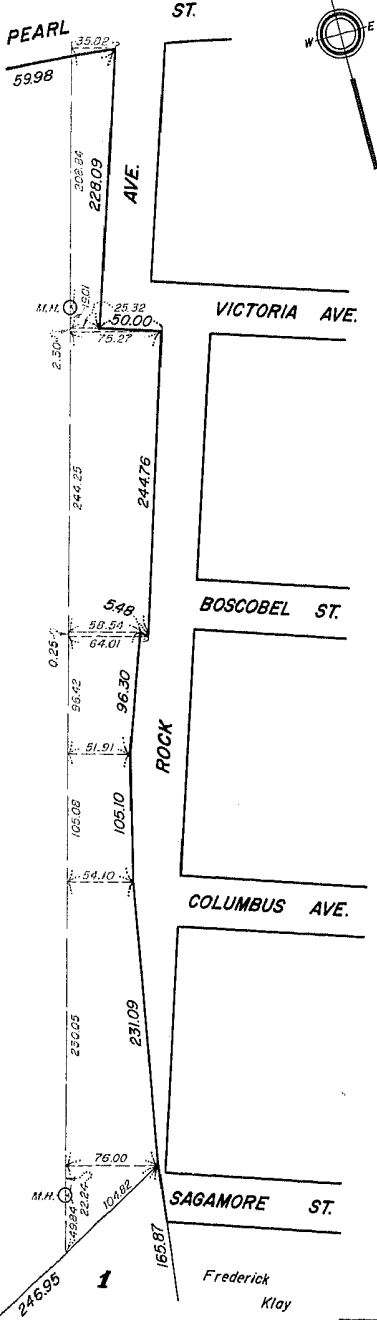
Scale of this plan: 1" = 200'

M

NOT AN OFFICIAL COPY

NOT AN OFFICIAL COPY

33012A
Sheet 3



Marfolk County Registry District

NOV - 5 1934

RECEIVED FOR REGISTRATION
NOTED ON CERTIFICATE NO. 76373
IN REGISTRATION BOOK 383 PAGE 122

A. J. S. Piping Co., Inc.

Lewis J. Marshall et al.

Edward J. Morrissey et al.

Town of Braintree 100.00

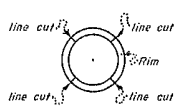
Lewis J. Hannon et al.

Joseph C. Gagne et al.

Town of Braintree

DETAIL "A"
NOT to scale

TYPICAL MANHOLE



Intersection of line cuts establishes point used.

DETAIL "B"
NOT to scale