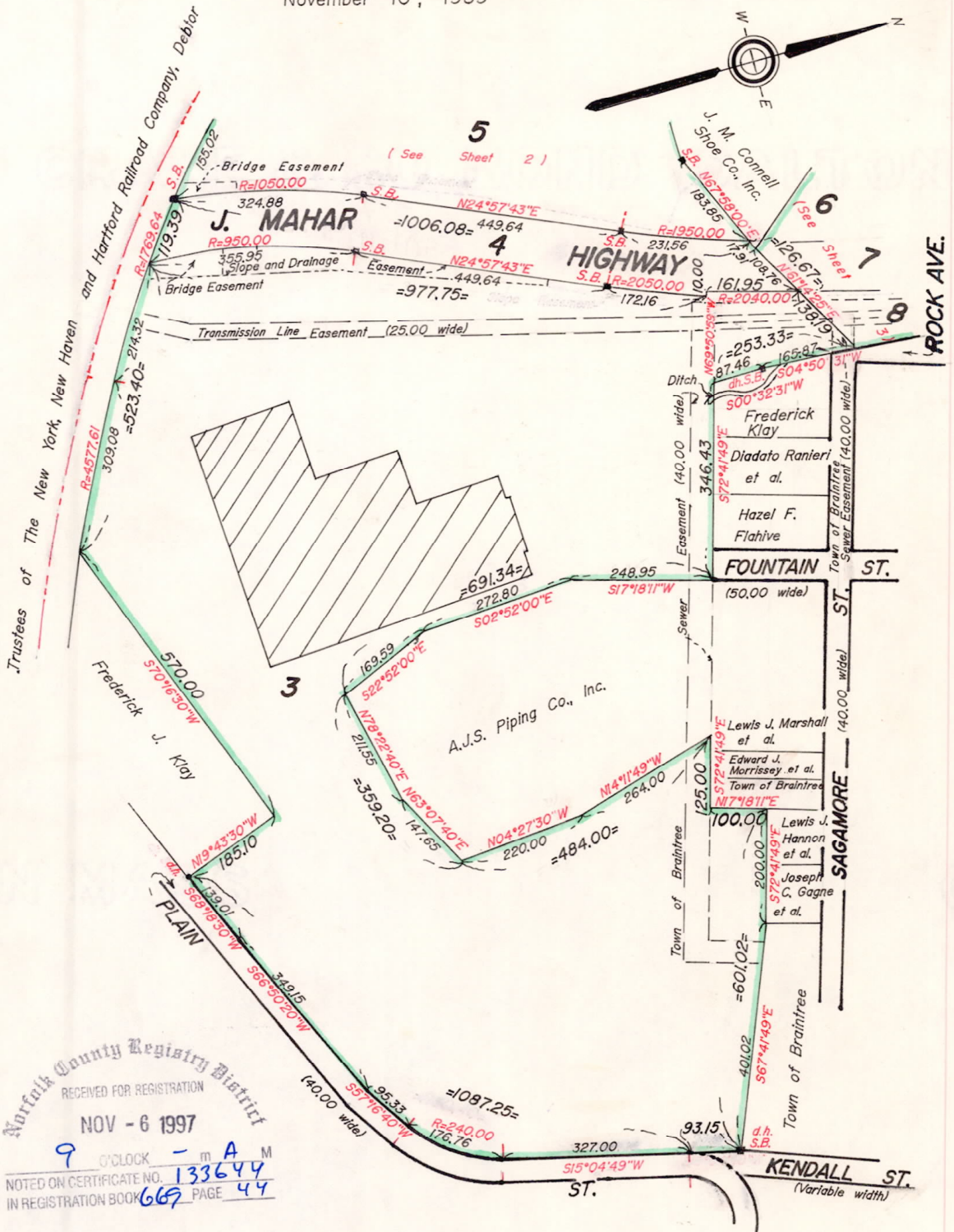


SUBDIVISION PLAN OF LAND IN BRAINTREE

Original Associates, Inc. Surveyors
 OFFICIAL COPY
 November 10, 1989

33012B
 SHEET 1 OF 3



Norfolk County Registry District
 RECEIVED FOR REGISTRATION
 NOV - 6 1997
 9 O'CLOCK - m A M
 NOTED ON CERTIFICATE NO. 133644
 IN REGISTRATION BOOK 669 PAGE 44

Subdivision of Lots 1 and 2
 Shown on Plan 33012^A Shs. 1, 2 and 3
 Filed with Cert. of Title No. 76572
 Registry District of Norfolk County
 Separate certificates of title may be issued for land
 shown hereon and on sheets 2 and 3 as Lots 3 through 8
 By the Court.

Deanne M. Maloney
 Deputy Recorder.
 September 27, 1990.
 J.J.D.-OIE5 (HD)

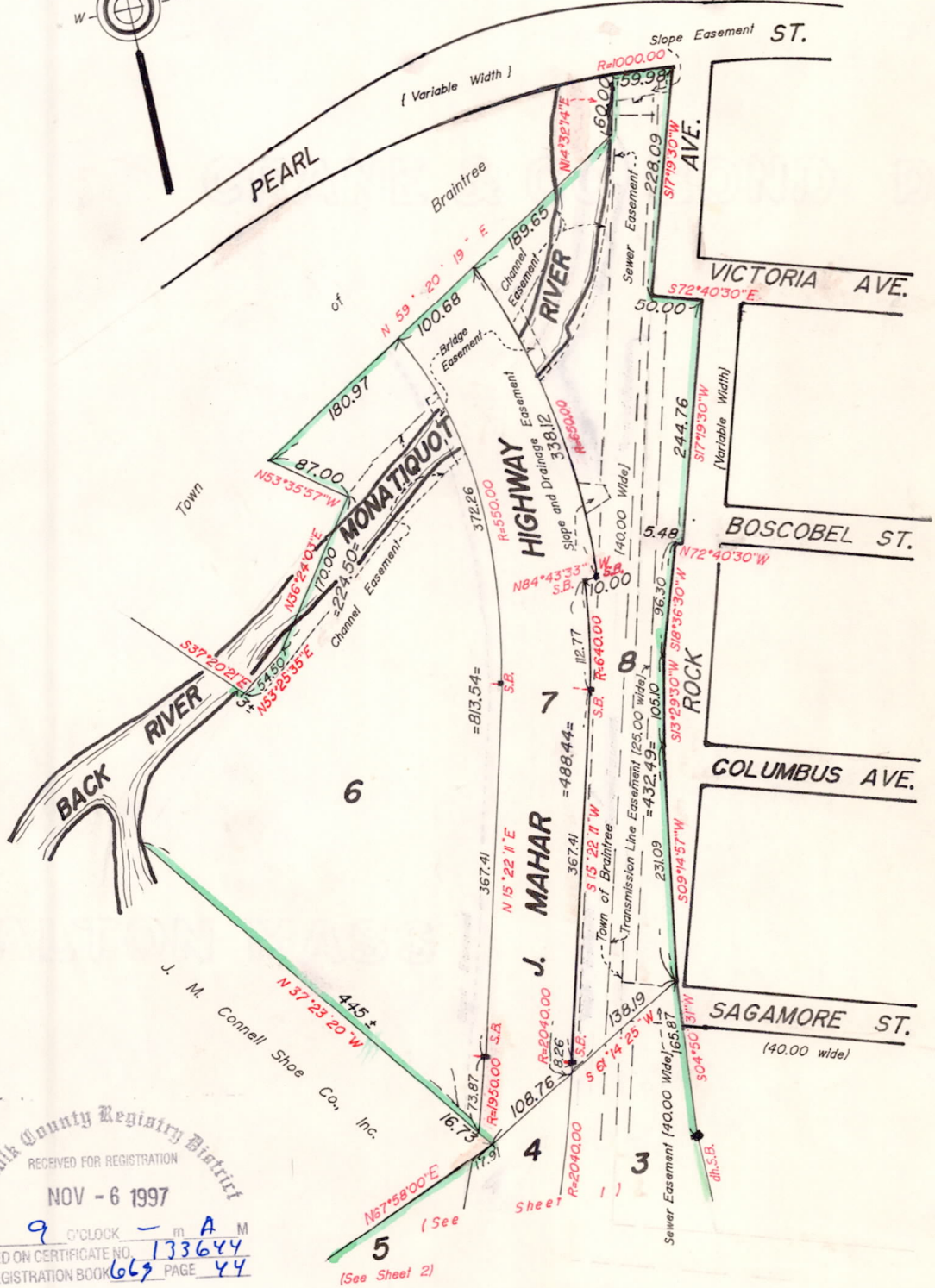
Abutters are shown as on original decree plan.
 Copy of part of plan filed in
 LAND REGISTRATION OFFICE
 JUNE 29, 1990
 Scale of this plan 200 feet to an inch
 Louis A. Moore, Engineer for Court

NOT
AN
OFFICIAL
COPY

NOT
AN
OFFICIAL
COPY

33012B

Sheet 3 of 3



Northfolk County Registry District
 RECEIVED FOR REGISTRATION
 NOV - 6 1997
 9 O'CLOCK - m A M
 NOTED ON CERTIFICATE NO. 133644
 IN REGISTRATION BOOK 669 PAGE 44