

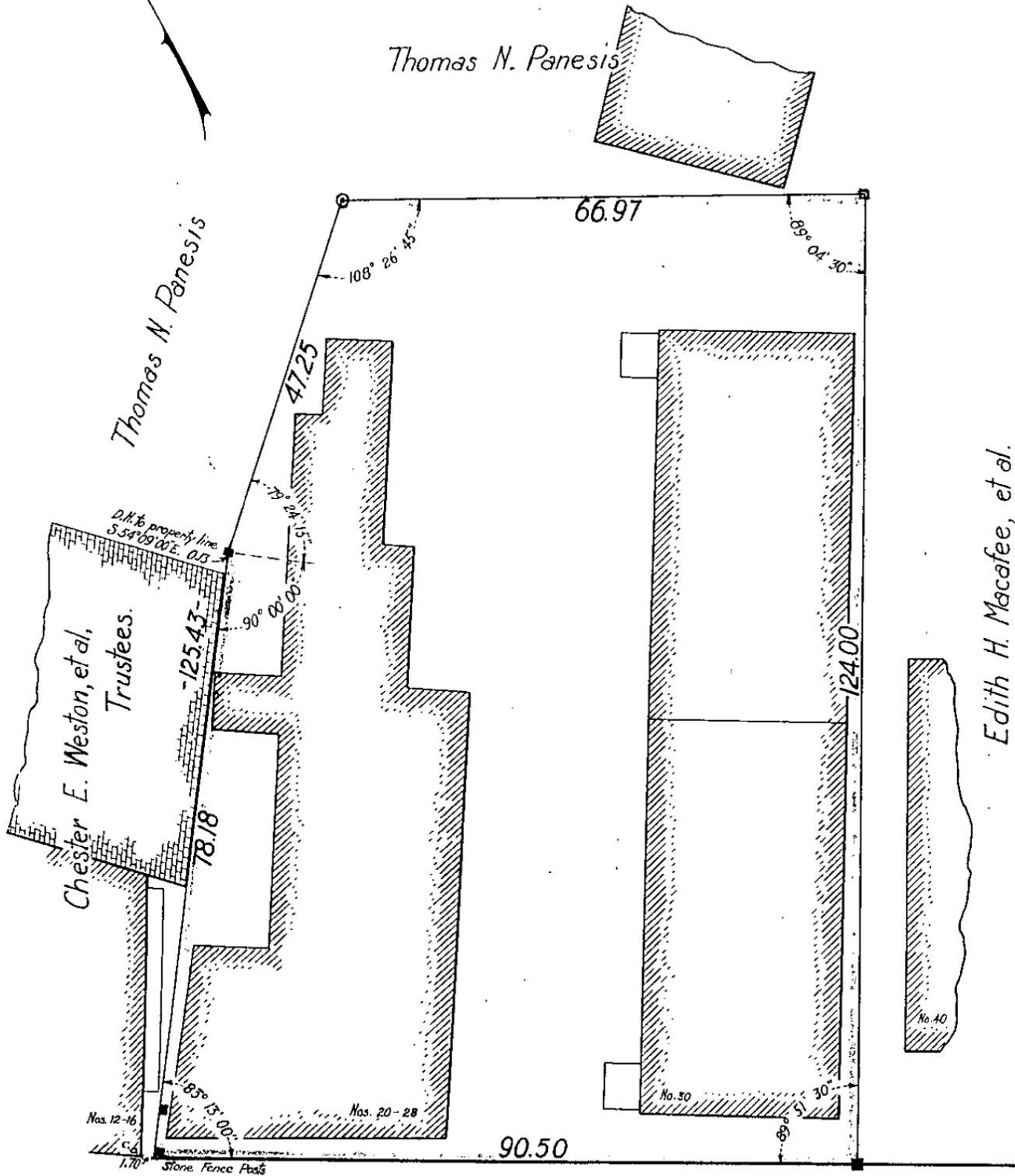
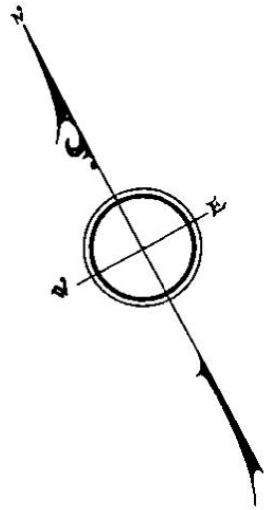
11935 A

PLAN OF LAND IN MIDDLEBOROUGH

Scale 10 feet to an inch

JUNE 1, 1926

Frederick S. Weston, Civil Engineer.



WAREHAM STREET

THIS PLAN FILED WITH
CERTIFICATE No. 2907

Copy of part of plan
filed in
LAND REGISTRATION OFFICE
DEC. 17, 1926
Scale of this plan 20 feet to an inch
C.B. Humphrey, Engineer for Court