

25250B - Lots 21+22 - Cert. 23040
 25250E - Lots 21+22 - Cert. 23040

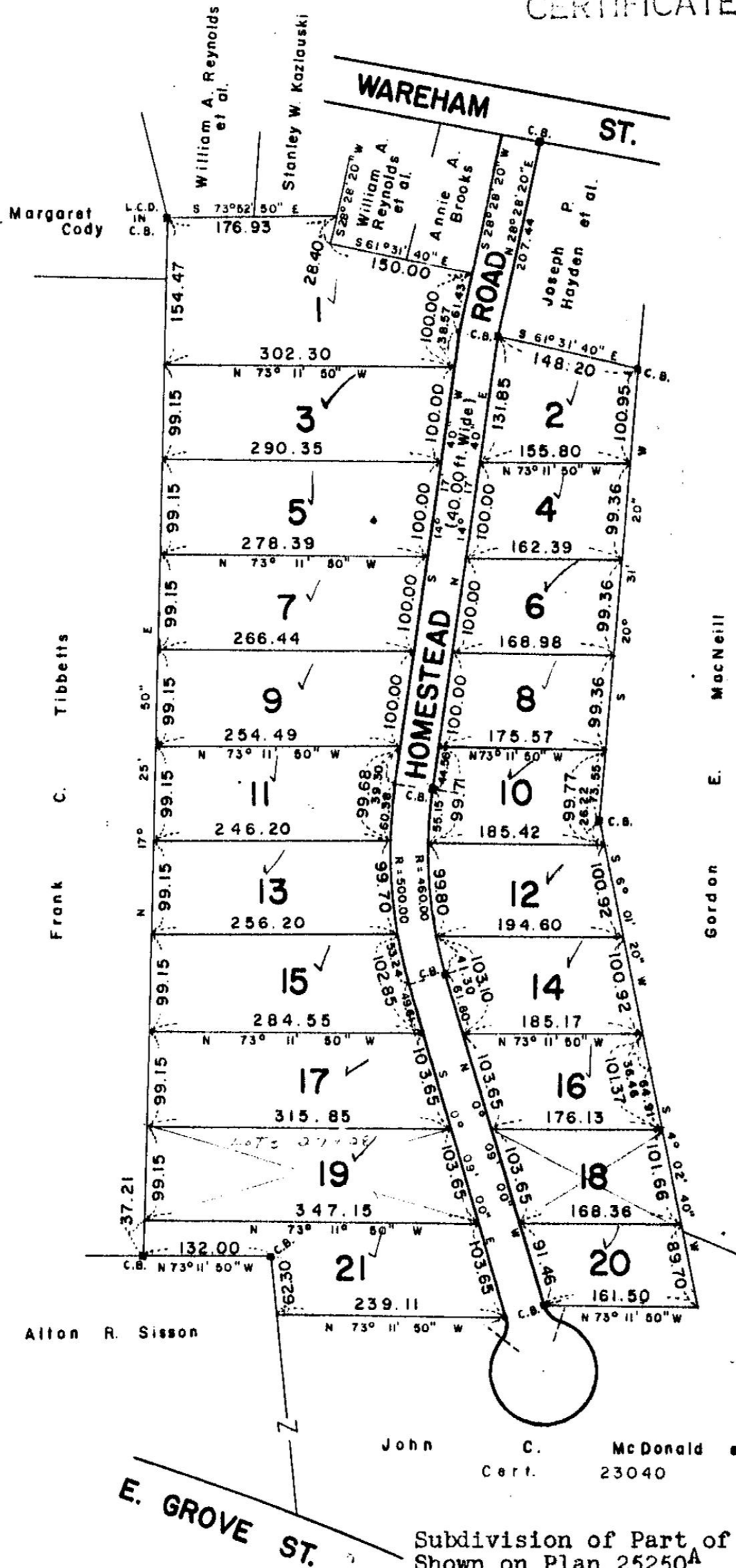
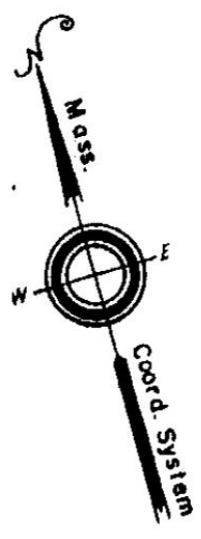
SUBDIVISION PLAN OF LAND IN MIDDLEBOROUGH

25250^B

Walter E. Rowley, Surveyor

June 13, 1958

THIS PLAN FILED WITH
 CERTIFICATE NO. 23040



APR 9 - 1958

Separate certificates of title may be issued for land shown hereon as Lots 1 thru 21 By the Court.

Subdivision of Part of Land Shown on Plan 25250^A Filed with Cert. of Title No. 23040 Registry District of Plymouth County

July 1, 1958

John H. Johnson
 Recorder.

Copy of part of plan filed in
LAND REGISTRATION OFFICE
 July 1, 1958
 Scale of this plan 150 feet to an inch
 C.M. Anderson, Engineer for Court 1/2