

LOLUS MAP

DRAWN FROM U.S. GEOLOGICAL SURVEY MAP BRIDGEWATER QUADRANGLE 1962 SCALE: 1" = 2000'

PLAN OF LAND LOCATED IN MIDDLEBORO, MASS. BELONGING TO

MABEL M. PEPIN

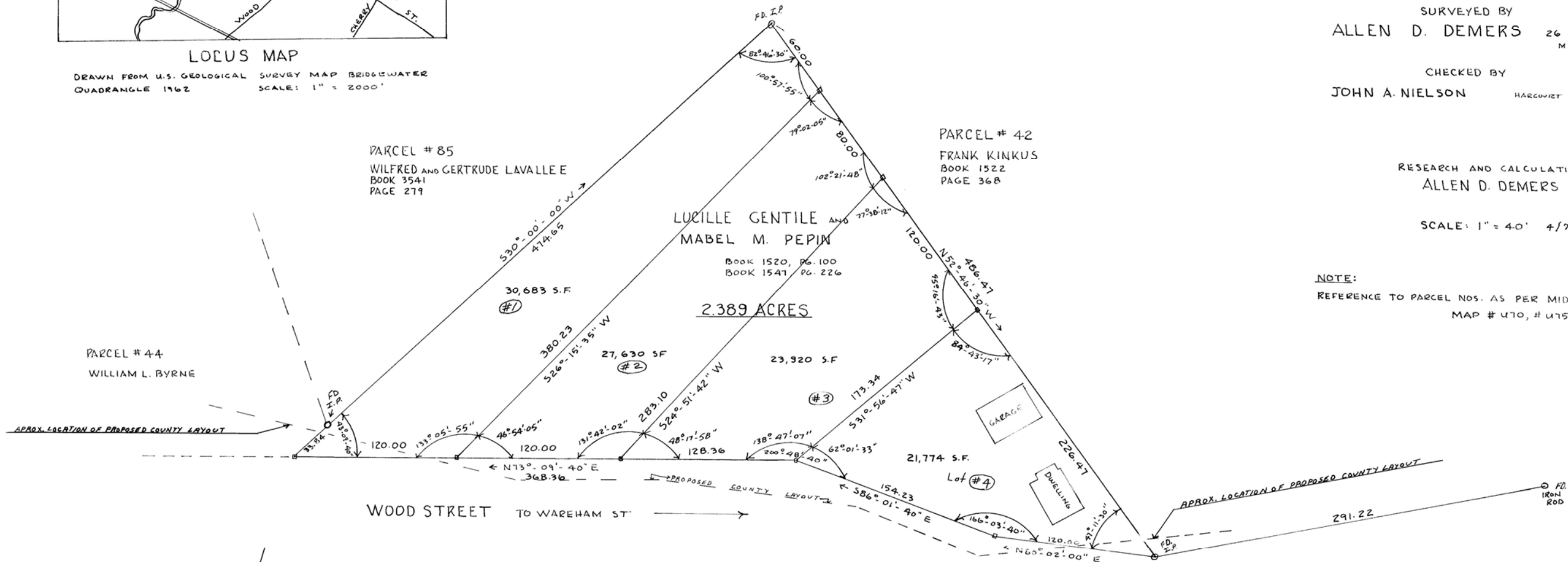
SURVEYED BY ALLEN D. DEMERS 26 BARDEN HILL RD. MIDDLEBORO, MASS.

CHECKED BY JOHN A. NIELSON HARCOURT AVE - LAKEVILLE, MASS.

RESEARCH AND CALCULATIONS ALLEN D. DEMERS

SCALE: 1" = 40' ± 71

NOTE: REFERENCE TO PARCEL NOS. AS PER MIDDLEBORO ASSESSORS MAP # 470, # 475



Allen D. Demers
John A. Nielson
Hardy & Benedict

JUNE 6, 1972

Plymouth County Registry of Deeds
 PLANBOOK 16 PAGE 714

