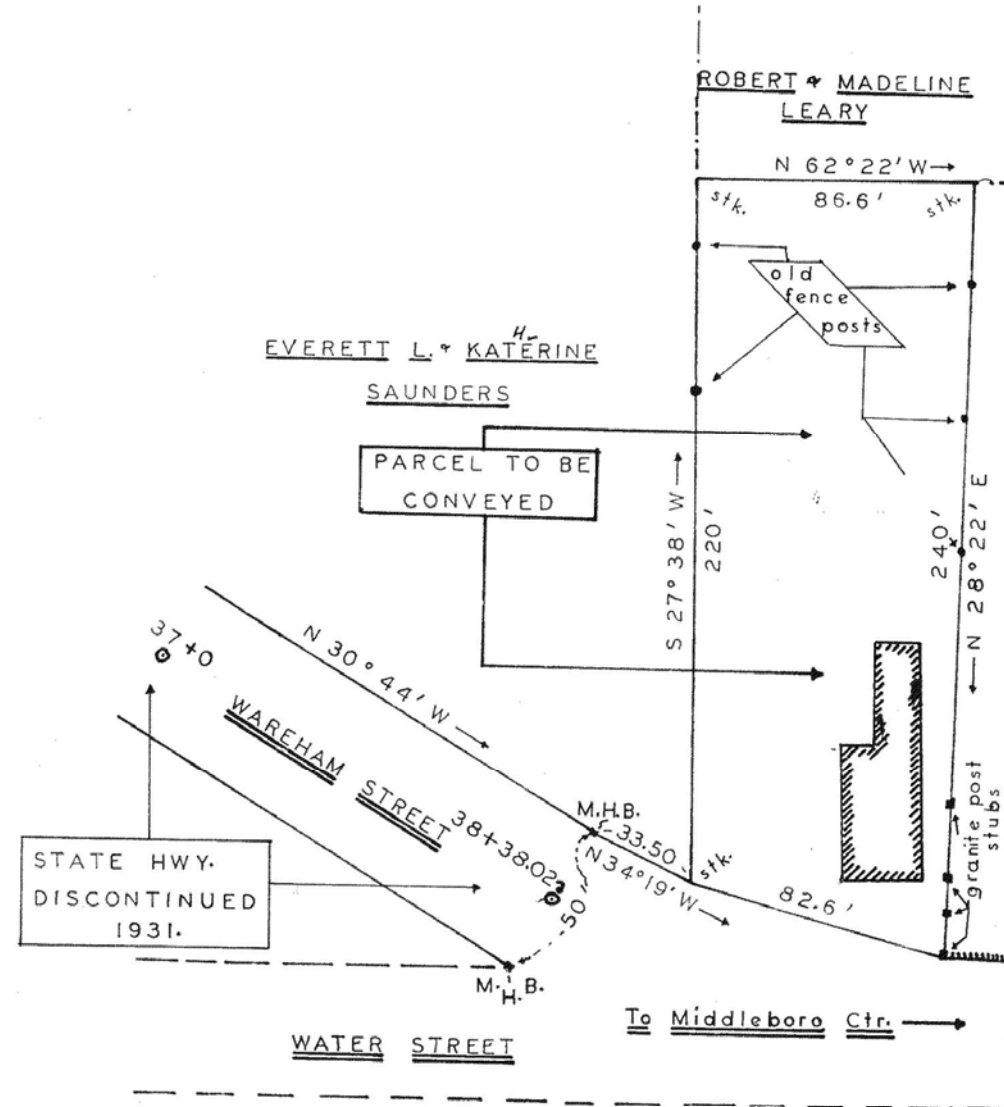


Approval under the Subdivision Control
 Law not required.
 Middleborough Planning Board
 Alton M. Kramer, Chairman
 25 May 1964



ALFRED C. & EVELYN M.
 HENAULT

PLYMOUTH CO. DEEDS
 Book 3111 Page 330



PLAN OF LAND
 in
 MIDDLEBORO-MASS.
 belonging to
 ROBERT & MADELINE
 LEARY

Scale 1 inch = 40 Feet
 May 25, 1964.

Theodore Deane
Marshall Masamille



64-339