

Aug 6 1896
to certify that releases from
land and grade damage shown on this plan
between Station 3707 and Station 3662¹³
have been obtained, in part, the
responsible release being
accepted by W. B. Smith
Clerk.

PLAN OF WAREHAM ST. MIDDLEBORO PLYMOUTH CO.

Laid out as a State Highway
BY
THE MASSACHUSETTS HIGHWAY COMMISSION.
JULY 23, 1896

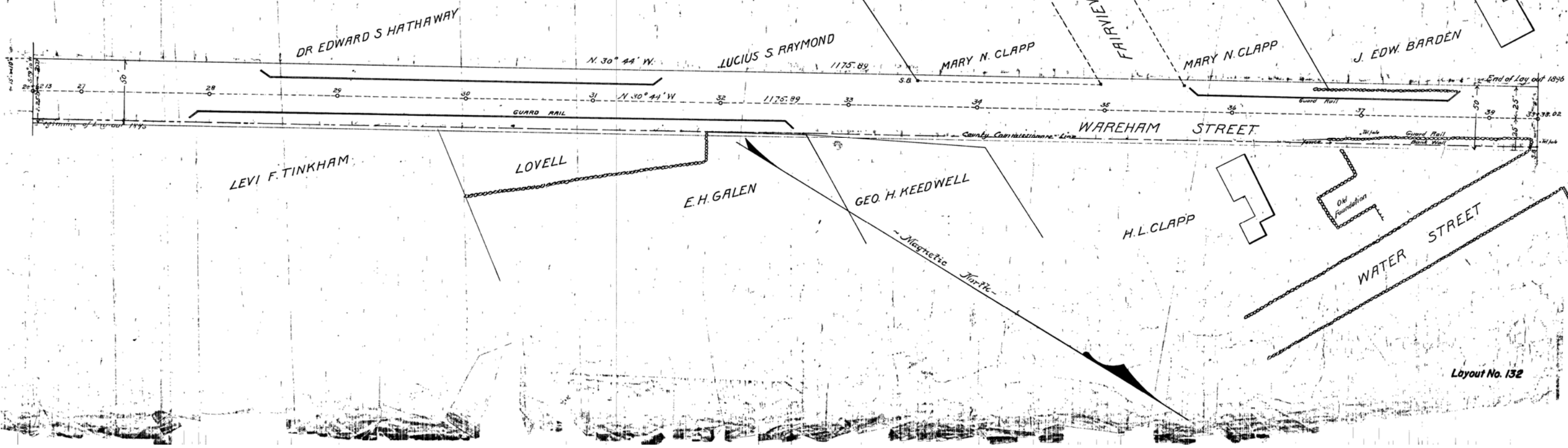
Surveyed	Feb.	1896	by	A. H. Lewis
Plotted	Feb.	1896	by	Louis S. Williams
Traced	July	1896	by	J. H. Taylor
Checked	July	1896	by	W. B. Smith

HOR. SCALE, 1 IN. = 40 FT.
VERT. SCALE, 1 IN. = 8 FT.

Approved July 23 1896.
Chas. Mills
Chief Engineer.

This certifies that the highway as shown on this plan
was laid out as a State Highway by the Massachusetts
Highway Commission July 23, 1896
in accordance with Chapter 497 of the Acts of 1894.

T. C. Meudenhall } Massachusetts
H. E. McCintock } Highway
Commission.



132