

BS H.I F.S C&U OSE
 5.33 5.98 CB XY MARK 4 TRIMED
 5.41 ~~5.33~~ CB same
 7.08

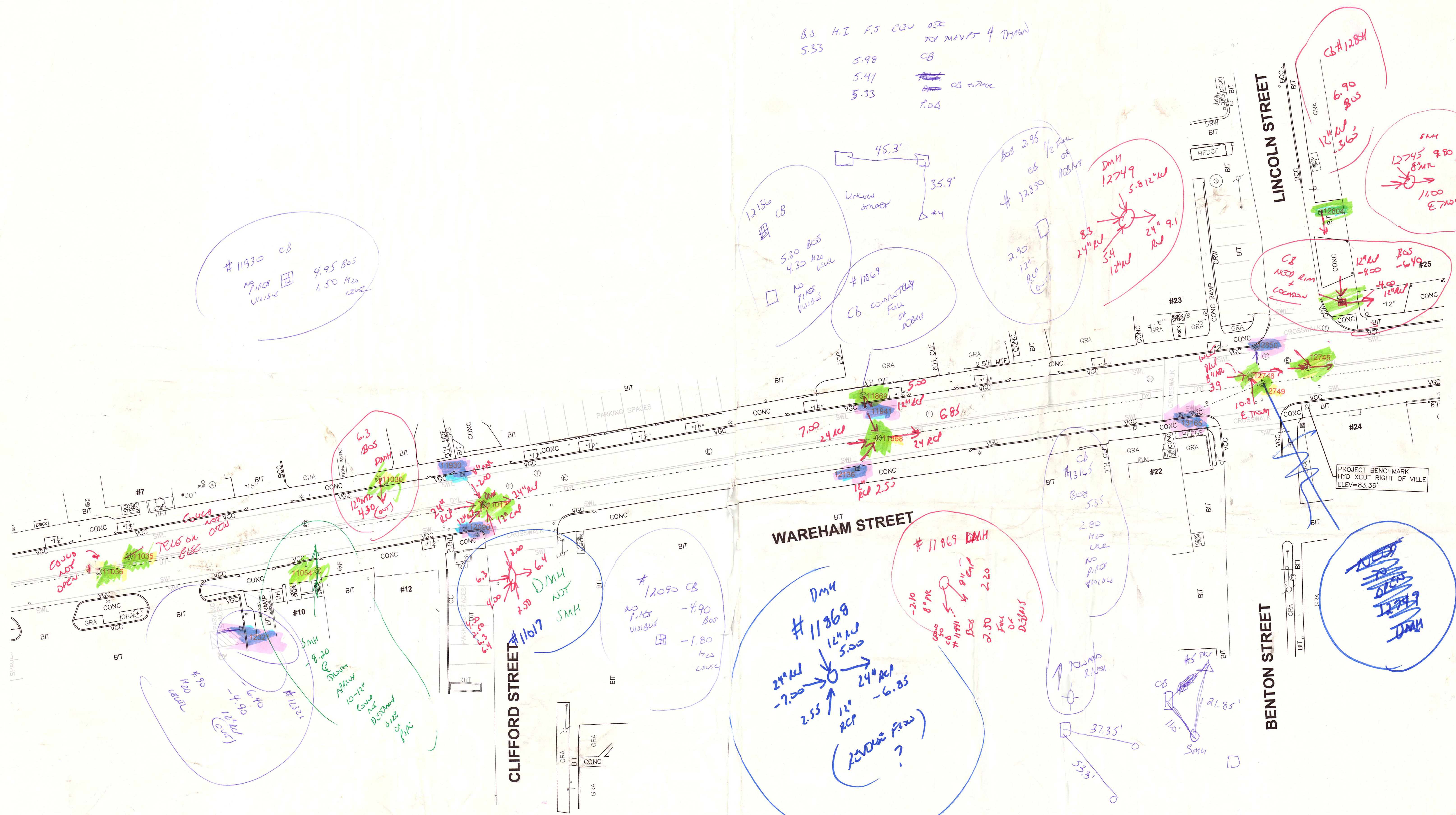
#11930 CB
 M.P. 1108 4.95 BOS
 Visible 1.50 H2O
 1.50 H2O

12130 CB
 5.80 BOS
 4.30 H2O
 NO PINS
 Visible
 #11859
 CB CONNECTED
 FACE
 OF
 ADJACENT

BOS 2.95
 CB
 #12850
 2.90
 12" RCP
 DMH 12749
 5.812" RCP
 8.33
 24" RCP
 5.4
 12" RCP
 24" 9.1
 ROW

CB #12884
 6.90 BOS
 12" RCP
 3.65
 5.81
 12745 9.80 DIAL
 8" RCP
 1.00
 E 7.2000

CB
 NEAR RIM
 +
 CORNER
 12" RCP
 BOS
 -4.00
 #25
 4.00
 12" RCP
 "12"
 CONC



BS H.I F.S C&U OSE
 15.55 14.35 NO MARKS
 4.78 CB SMH
 4.81 ELEC MM #10806
 15.35 ARCS CB
 P.O.B

7/20/2022
J.W. CW

1

SCANNED