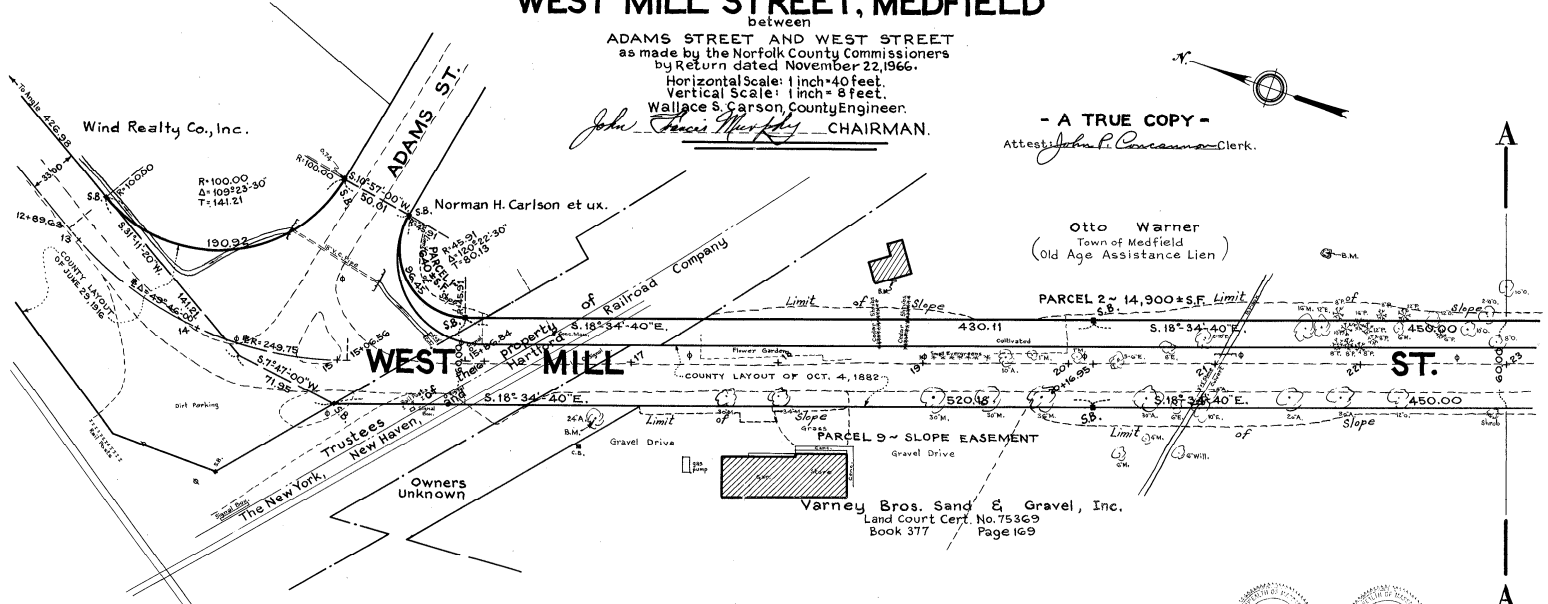


OF THE COUNTY OF NORFOLK showing the Relocation and Widening of a portion of the COUNTY LAYOUT  
**WEST MILL STREET, MEDFIELD**  
between

ADAMS STREET AND WEST STREET  
as made by the Norfolk County Commissioners  
by Return dated November 22, 1966.

Horizontal Scale: 1 inch = 40 feet.  
Vertical Scale: 1 inch = 8 feet.  
Wallace S. Carson, County Engineer.  
*John James Murphy* CHAIRMAN.

- A TRUE COPY -  
Attest *John P. Curran* Clerk.



Otto Warner  
Town of Medfield  
(Old Age Assistance Lien)

PARCEL 2 ~ 14,300 ± S.F. Limit

S. 18° 34' 40" E. 430.11

S. 18° 34' 40" E. 456.00

S. 18° 34' 40" E. 450.00

PARCEL 9 ~ SLOPE EASEMENT

Varney Bros. Sand & Gravel, Inc.  
Land Court Cert. No. 75369  
Book 377 Page 169

Norfolk Registry of Deeds  
Dedham, Mass.  
Received Dec 15 1966 with Tk9  
By  
County of Norfolk  
Filed as No. 1198-1966 Pl. Bk. 221  
Attest *James J. ...* Register



1.47%		1.33%		0.96%		1.00%		Present & Surface		0.79%	
Elevations based on sea level datum of 1929											
B.M. ~ A U.S.C. & G.S. and State Survey bound No. 854 at Medfield Junction. Elev. = 135.86											
13	134.2 137.24	14	137.6 136.01	15	139.3 139.44	16	137.9 136.34	17	136.1 136.50	18	135.1 137.50
B.M. ~ A horizontal spike in 24" Ash. Sta. 16+76; 38 ft. right. Elev. = 133.37						B.M. ~ Left outer corner of bottom concrete step to house. Sta. 18+77.5; 55 ft. left. Elev. = 141.85					
19	135.2 137.6	20	138.2 138.25	21	138.3 138.68	22	140.1 139.46	23	141.1 140.64	24	141.7 141.04
B.M. ~ A chiseled square in boulder. Sta. 21+75; 76 ft. left. Elev. = 138.18											
13	ELEV. = 120.00	14		15		16		17		18	

