

OFFICIAL showing Plan and Profile of WEST STREET, MEDFIELD between BRIDGE STREET AND HARDING STREET as made by the Norfolk County commissioners by Return dated November 22, 1966.

WEST STREET, MEDFIELD

between

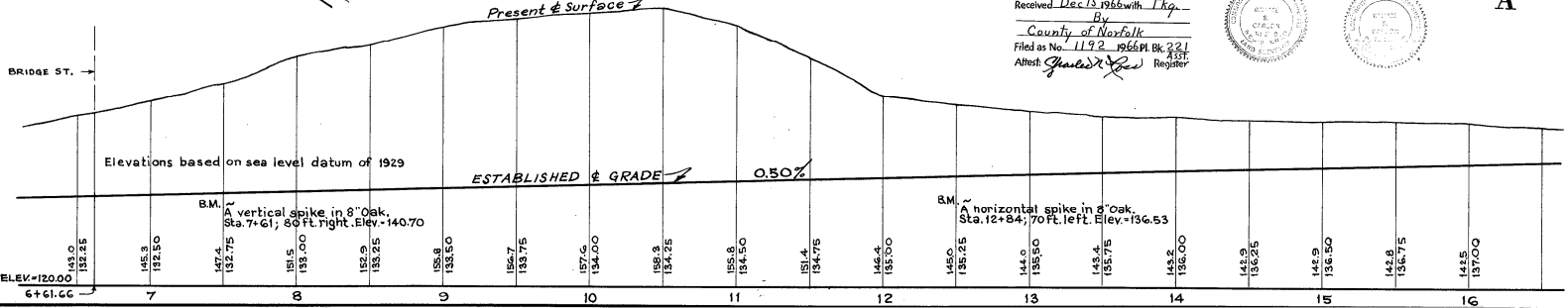
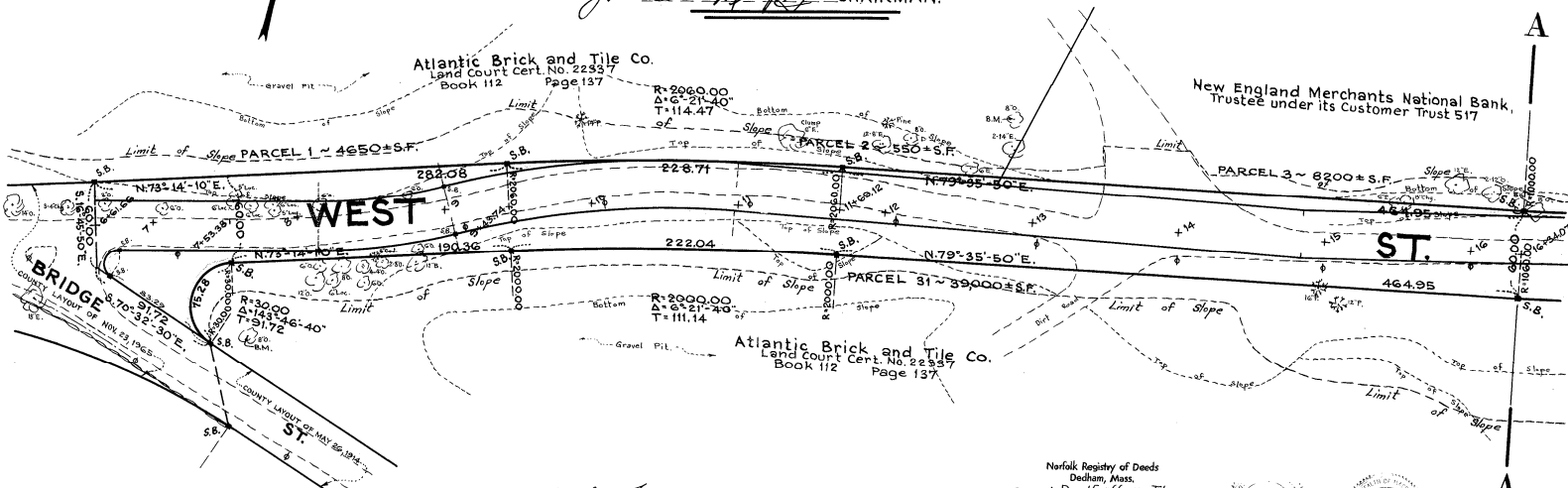
BRIDGE STREET AND HARDING STREET as made by the Norfolk County commissioners by Return dated November 22, 1966.

Horizontal Scale: 1 inch = 40 feet.  
Vertical Scale: 1 inch = 8 feet.  
Wallace S. Carson, County Engineer.

*John James Murphy* CHAIRMAN.

- A TRUE COPY -

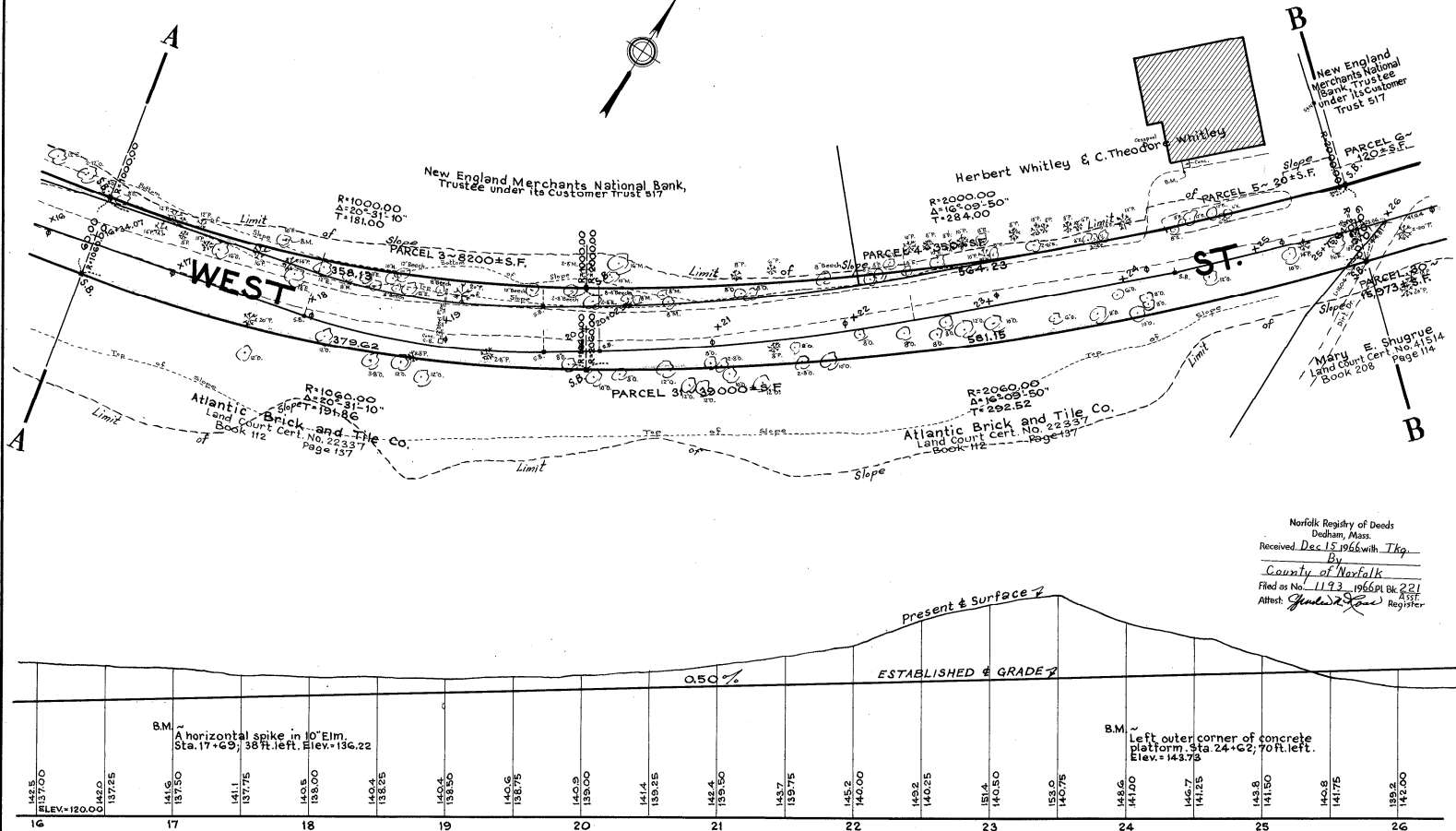
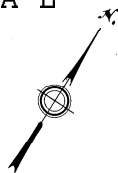
Attest: *John P. Conson* Clerk.



Norfolk Registry of Deeds  
Dedham, Mass.  
Received Dec 15 1966 with Tkg.  
By  
County of Norfolk  
Filed as No. 1192-1966 Pl. Bk. 221  
Attest: *Charles Lee* Register

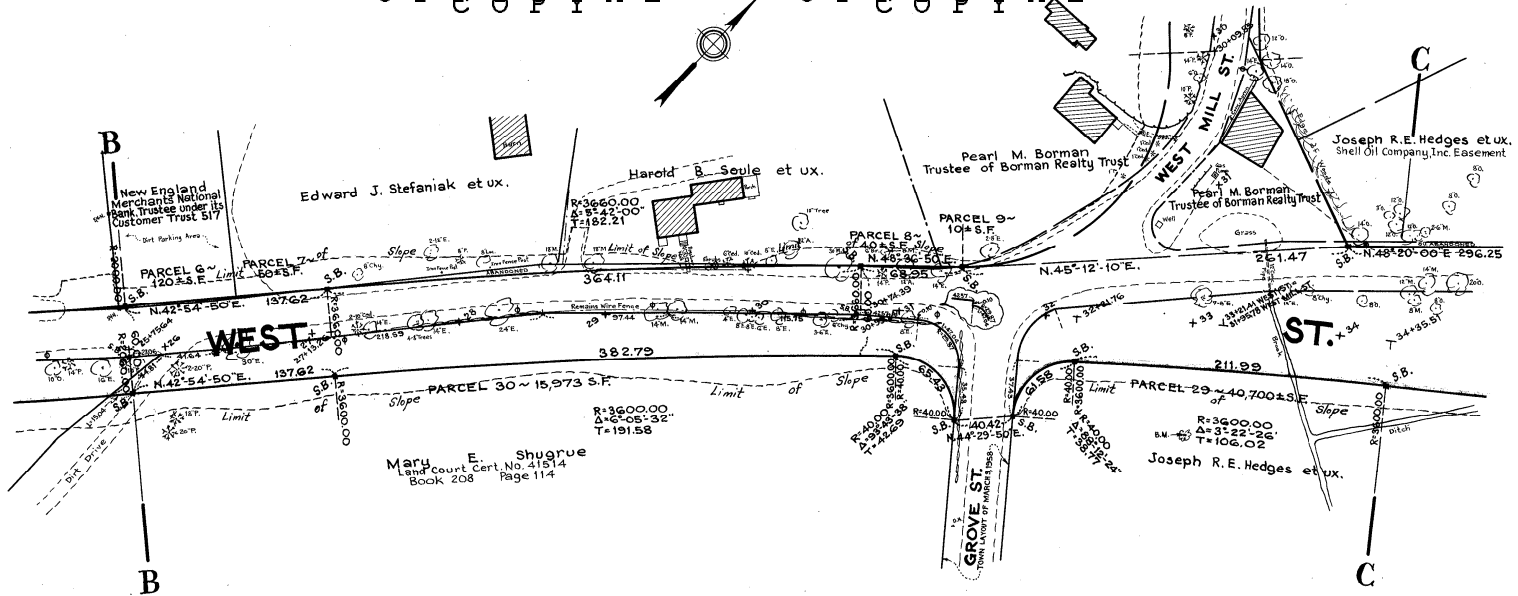
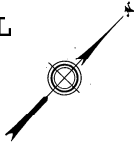


O F E N A O N T I A L O F E N A O N T I A L



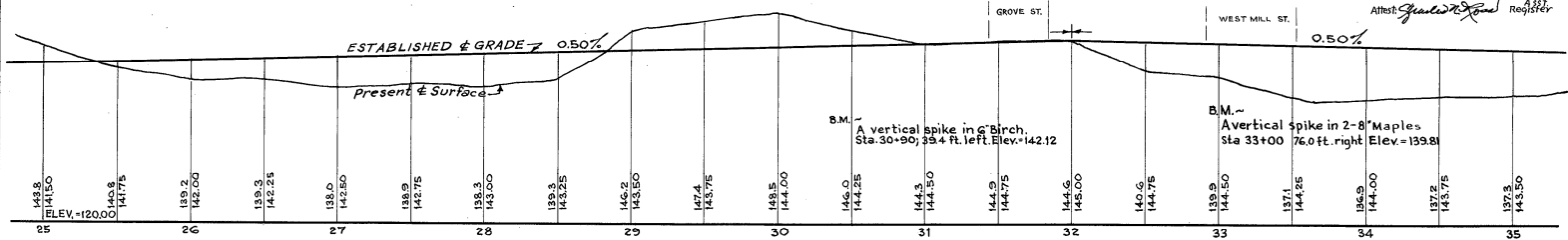
Norfolk Registry of Deeds  
 Duxbury, Mass.  
 Received Dec. 15, 1966 with Tkg.  
 By \_\_\_\_\_  
 County of Norfolk  
 Filed as No. 1193-1966 Pl. Bk. 221  
 Attest: *James J. [Signature]* Register

OFFICIAL OF OFFICIAL



Mary E. Shugrue  
 Land Court Cert. No. 41514  
 Book 208 Page 114

Norfolk Registry of Deeds  
 Dedham, Mass.  
 Received Dec 15 1966 with Tax  
 By  
 County of Norfolk  
 Filed as No. 1194-1966 Pl. Bk. 221  
 Attest: *Charles J. [Signature]* Registrar



OFFICIAL OFFICIAL

