

NOT  
AN  
OFFICIAL  
COPY

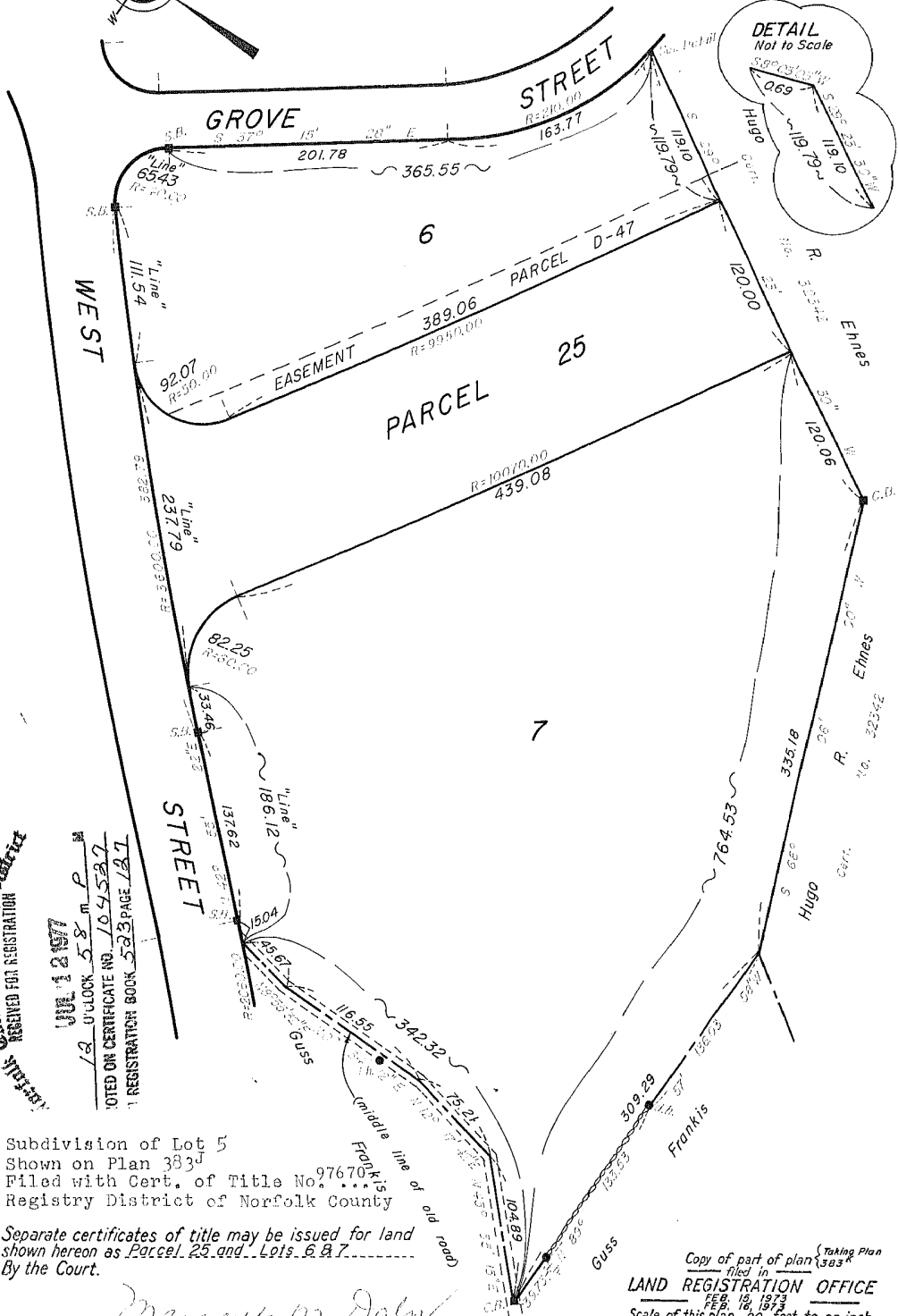
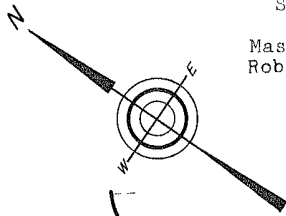
NOT  
AN  
OFFICIAL  
COPY

383K

SUBDIVISION PLAN OF LAND IN MEDFIELD

Massachusetts Department of Public Works  
Robert T. Tierney, Acting Chief Engineer

June 21, 1972



Norfolk County Registry District  
RECEIVED FOR REGISTRATION

JUL 12 1972  
12 O'CLOCK 58 P.M.  
NOTED ON CERTIFICATE NO. 104527  
1 REGISTRATION BOOK 5333 PAGE 1871

Subdivision of Lot 5  
Shown on Plan 383<sup>J</sup>  
Filed with Cert. of Title No. 97670  
Registry District of Norfolk County

Separate certificates of title may be issued for land  
shown hereon as Parcel 25 and Lots 6 & 7  
By the Court.

FEB. 20, 1973  
P.A.R.

Margaret M. Daly  
Recorder

Copy of part of plan (Taking Plan  
filed in 383<sup>K</sup>)  
LAND REGISTRATION OFFICE  
FEB. 19, 1973  
FEB. 18, 1973  
Scale of this plan 80 feet to an inch  
R.L. Woodbury, Engineer for Court