

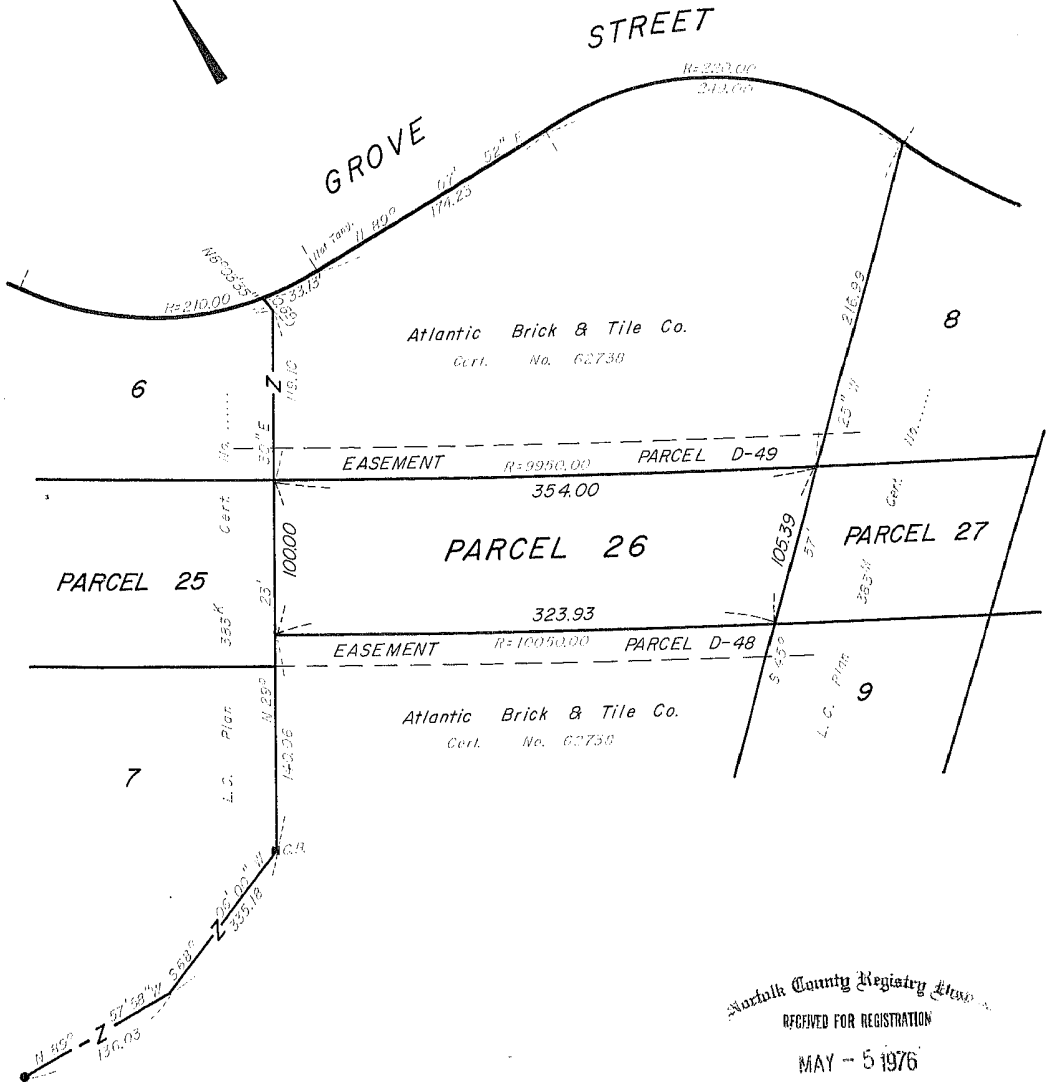
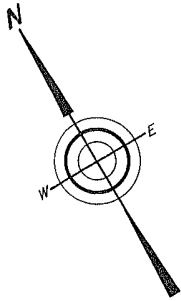
NOT OFFICIAL COPY      NOT OFFICIAL COPY

383L

SUBDIVISION PLAN OF LAND IN MEDFIELD

Massachusetts Department of Public Works  
Robert T. Tierney, Acting Chief Engineer

June 21, 1972



Norfolk County Registry Clerk

RECEIVED FOR REGISTRATION

MAY - 5 1976

NOTED ON CERTIFICATE NO. 30 IN 14  
IN REGISTRATION BOOK PAGE

Subdivision of part of Lot C  
Shown on Plan 383<sup>0</sup>  
Filed with Cert. of Title No. 32342  
Registry District of Norfolk County

Separate certificates of title may be issued for land  
shown hereon as Parcel 26  
By the Court.

FEB 20 1973

Margaret M. Daly  
Recorder.

P.A.R.

Form LCR-S-3. 2800-1-71

Copy of part of plan (Taking Plan  
filed in 383<sup>0</sup>)  
LAND REGISTRATION OFFICE  
FEB 20 1973  
Scale of this plan 80 Feet to an inch  
R.L. Woodbury, Engineer for Court