

NOT
AN
OFFICIAL
COPY

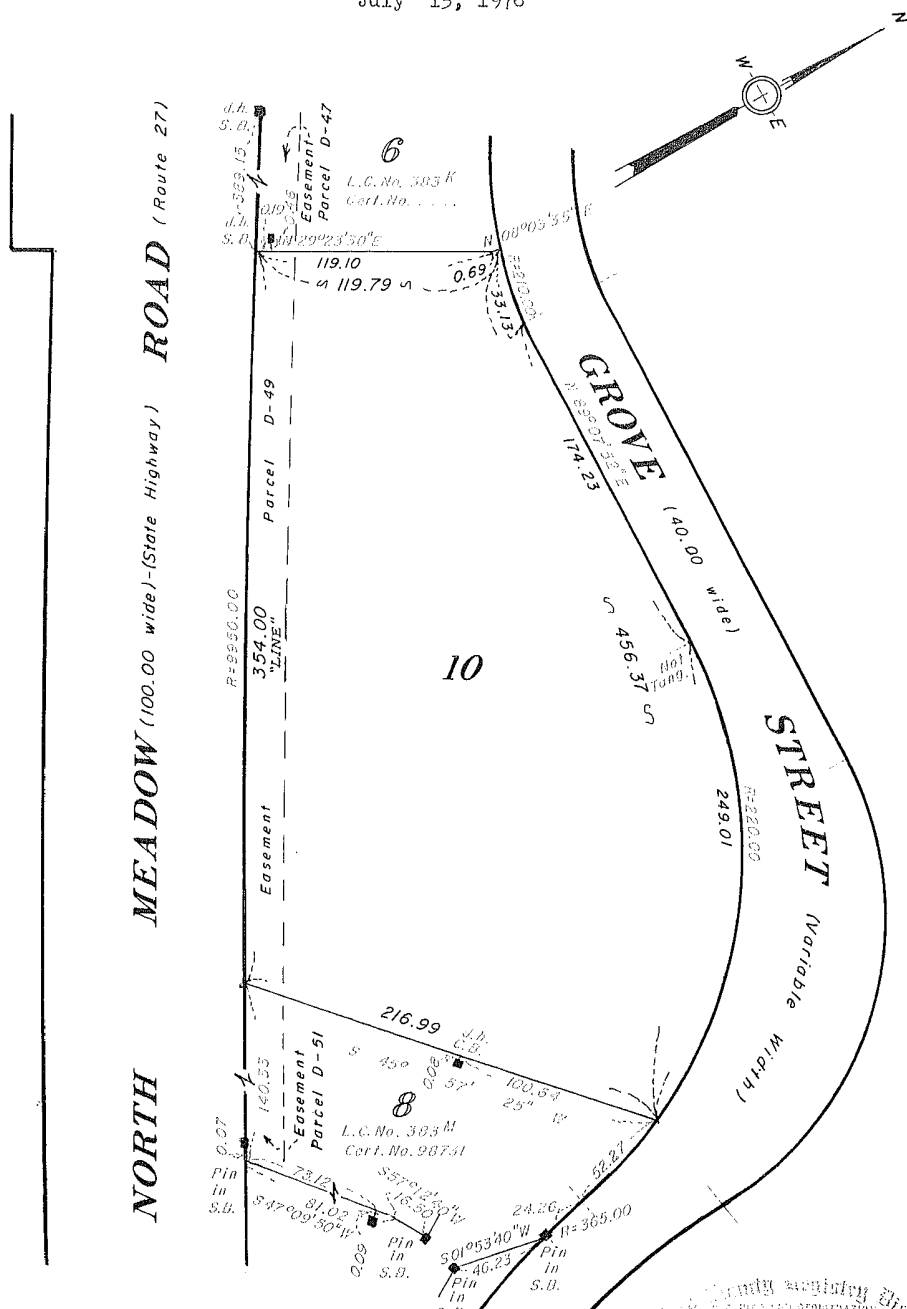
NOT
AN
OFFICIAL
COPY

SUBDIVISION PLAN OF LAND IN MEDFIELD

Cheney Engineering Co., Inc., Surveyors

July 15, 1976

383N



Subdivision of Part of Lot C
Shown on Plan 383C
Filed with Cert. of Title No. 32342
Registry District of Norfolk County

Separate certificates of title may be issued for land
shown hereon as Lot 10
By the Court.

Dec. 19, 1977
F.F.
Maya M. Daly
Recorder

Land Registry District
REGISTRY DISTRICT
AUG 18 1976
11 O'CLOCK 30 AM
BOOK CERTIFICATE NO. 105796
REGISTRATION BOOK 529 PAGE 196

Copy of part of plan
filed in
LAND REGISTRATION OFFICE
Dec. 19, 1977
Scale of this plan 60 feet to an inch
R.L. Woodbury, Engineer for Court