

NOT AN OFFICIAL COPY NOT AN OFFICIAL COPY

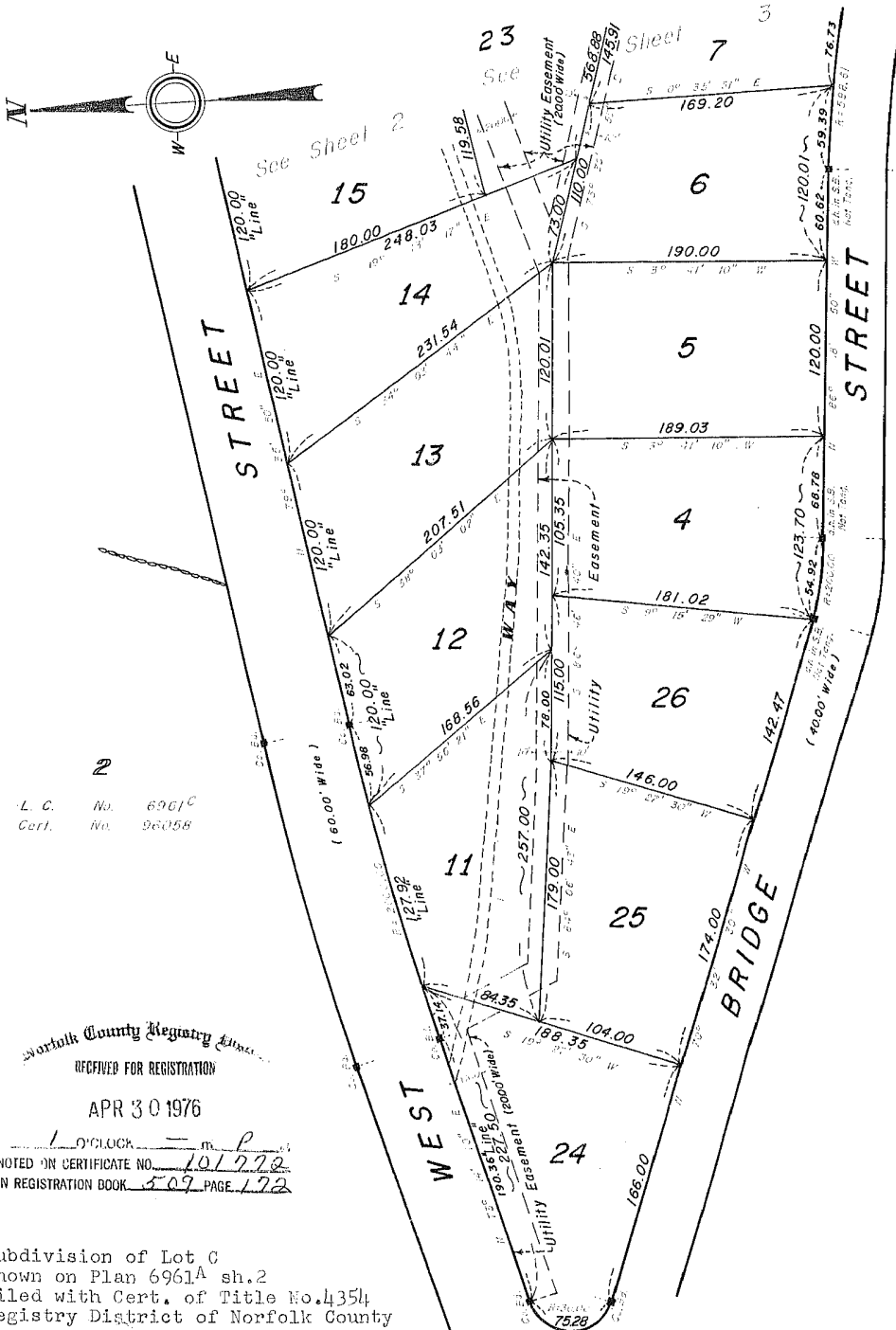
SUBDIVISION PLAN OF LAND IN MEDFIELD

WEB Engineering., Surveyors

January 7, 1975

6961^E

Sheet 1 of 3



N
L. C. No. 6961^C
Cert. No. 26058

Norfolk County Registry Office
RECEIVED FOR REGISTRATION

APR 30 1976

1 O'CLOCK - m. P.
NOTED IN CERTIFICATE NO. 101972
IN REGISTRATION BOOK 509 PAGE 172

Subdivision of Lot C
Shown on Plan 6961^A sh.2
Filed with Cert. of Title No.4354
Registry District of Norfolk County

Separate certificates of title may be issued for land shown hereon and on Sheets 2 & 3 as Lots 4 thru 26 by the Court.

June 9, 1975
SAL. *[Signature]* Deputy Recorder.

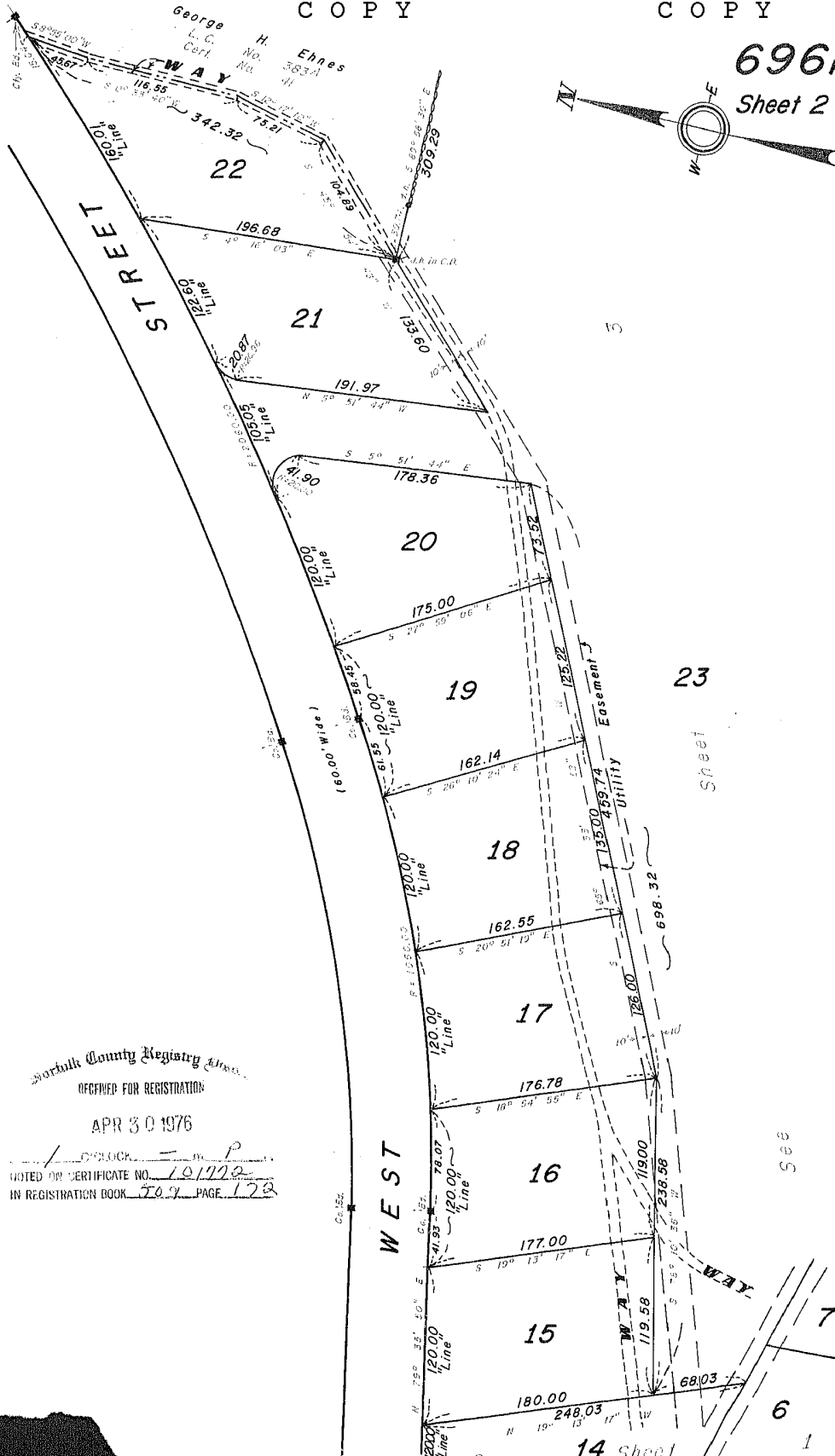
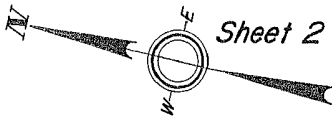
Copy of part of plan filed in
LAND REGISTRATION OFFICE
May 29, 1975
Scale of this plan 80 feet to an inch
R.L. Woodbury, Engineer for Court

NOT
AN
OFFICIAL
COPY

NOT
AN
OFFICIAL
COPY

6961 E

Sheet 2 of 3



Northfolk County Registry Office

RECEIVED FOR REGISTRATION

APR 30 1976

NOTED BY CERTIFICATE NO. 101772
IN REGISTRATION BOOK 504 PAGE 123

WEST

23
sheet

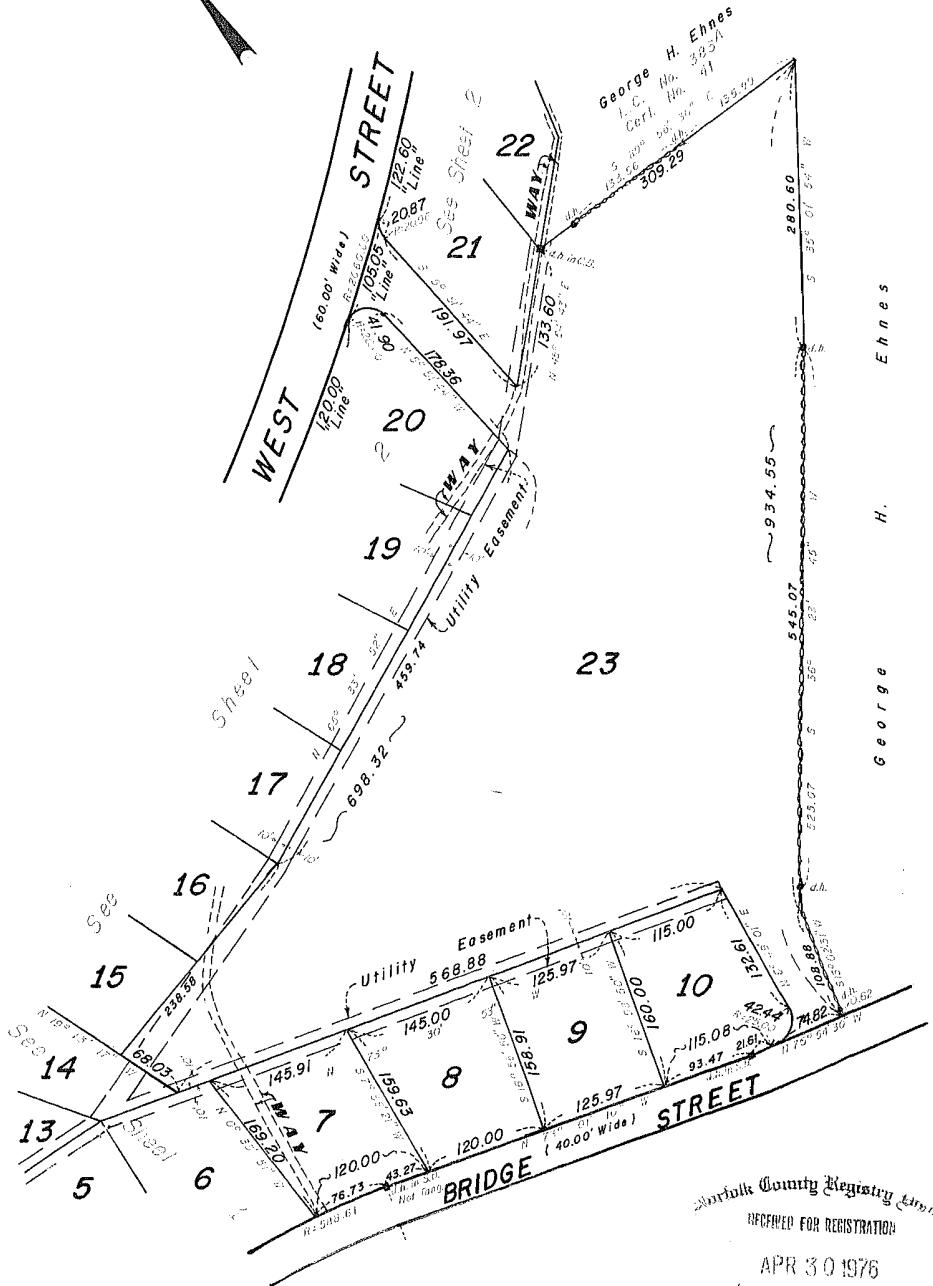
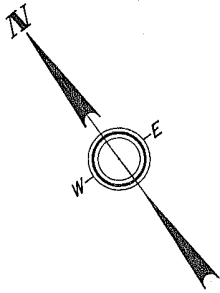
see

of this plan 80 feet to an inch See

14 Sheet

6961E

Sheet 3 of 3



Northfolk County Registry, Inc.
 RECEIVED FOR REGISTRATION

APR 30 1976

LOCK m P
 NOTED ON CERTIFICATE NO. 101772
 IN REGISTRATION BOOK 509 PAGE 172

SAL.

Scale of this plan 120 feet to an inch

36917