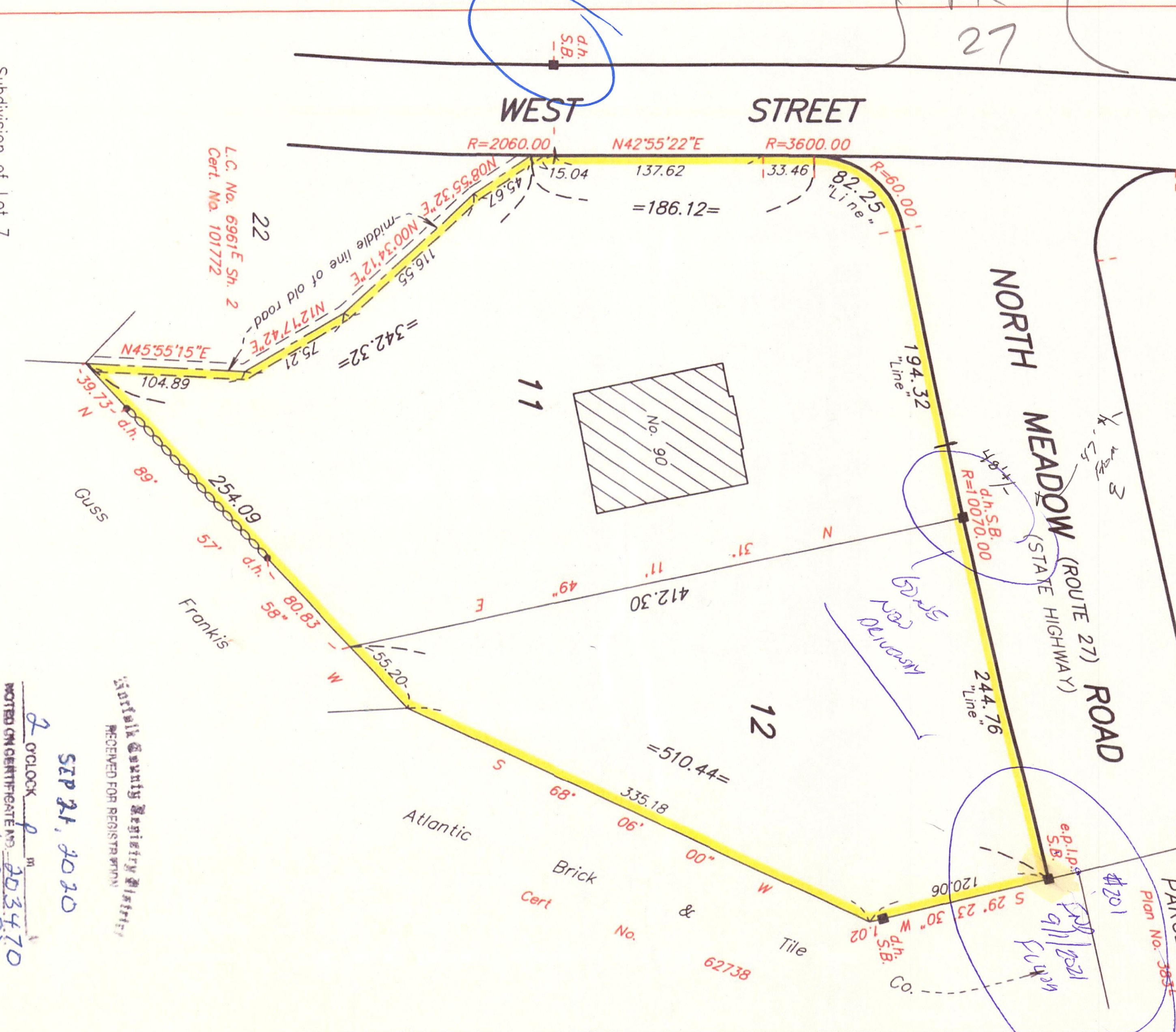
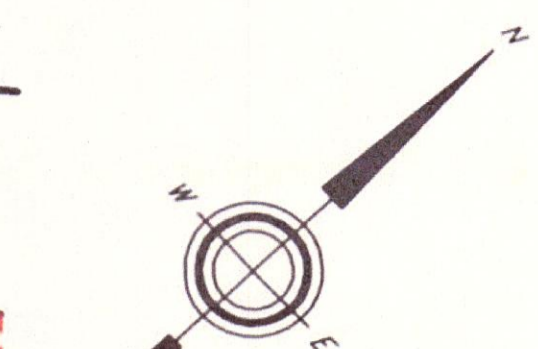


SUBDIVISION PLAN OF LAND IN MEDFIELD
 Glosco Engineering Inc., Surveyors
 OFFICIAL COPY

NOT AN OFFICIAL
 3830
 OFFICIAL



Subdivision of Lot 7
 Shown on Plan 383-K
 Filed with Cert. of Title No. 104527
 Registry District of Norfolk County

Separate certificates of title may be issued for land
 shown hereon as Lots 11 and 12
 By the Court.

Deborah J. Patterson
 Recorder

SEPT. 20, 2018
 ABH-000P

Abutters are shown as
 on original decree plan.

Copy of part of plan
 filed in

LAND REGISTRATION OFFICE
 SEPT. 20, 2018
 Scale of this plan 80 feet to an inch
 Stephen T. Lamonica, Engineer for Court

2 OCTOBER 2020
 NOTED ON CERTIFICATE NO. 203470
 IN REGISTRATION 2018 / QIR:AVE:70
 Norfolk County Registry District
 REOPENED FOR REGISTRATION