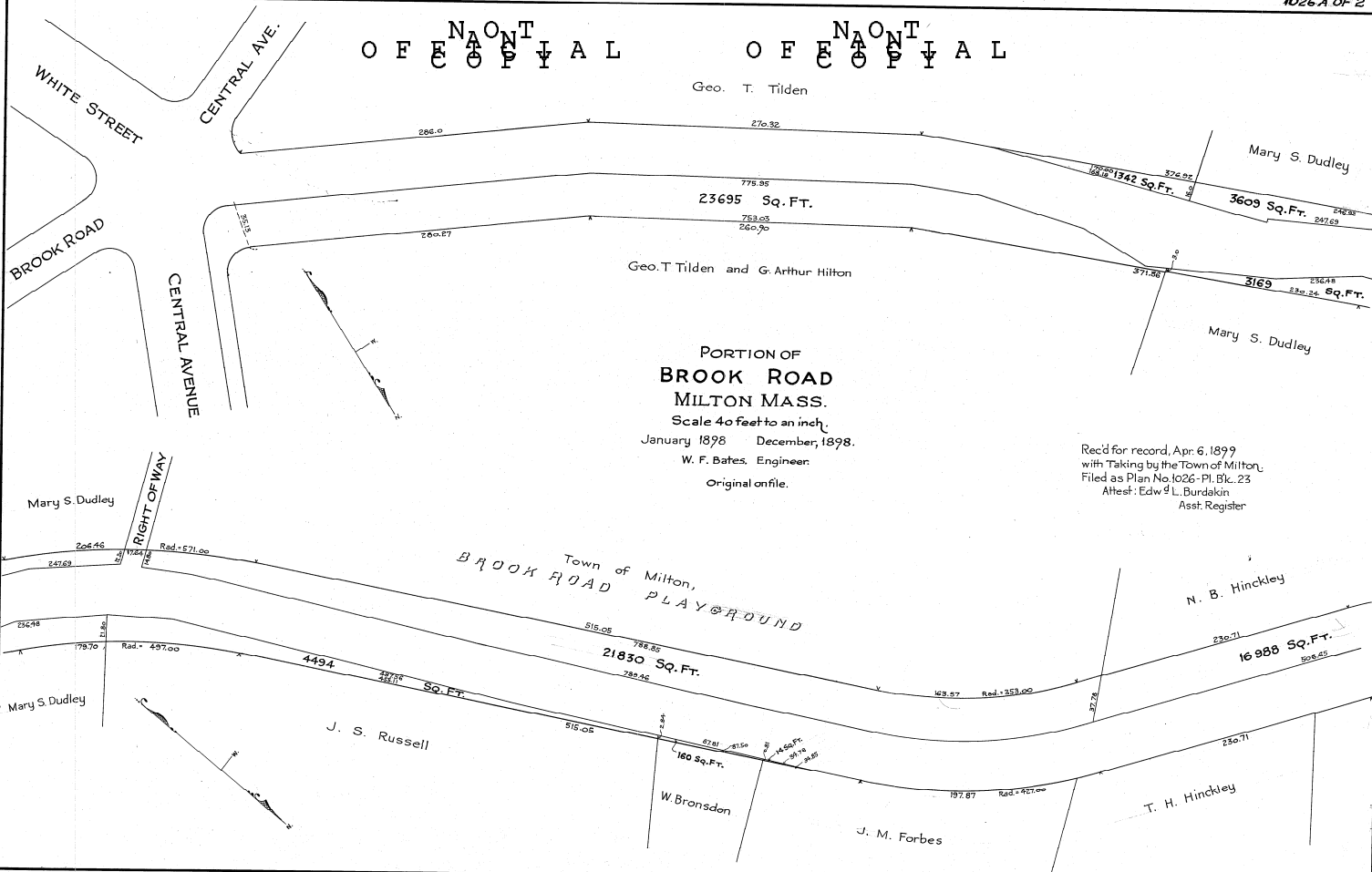


OFFICIAL OF OFFICIAL

Geo. T. Tilden



286.0

270.32

778.85

23695 Sq. Ft.

753.03

260.90

260.87

Geo. T. Tilden and G. Arthur Hilton

1626°1342 Sq. Ft.

376.82

3609 Sq. Ft.

246.88

247.69

371.86

3169

230.48

230.24

Sq. Ft.

Mary S. Dudley

PORTION OF  
BROOK ROAD  
MILTON MASS.

Scale 40 feet to an inch.

January 1898 December, 1898.

W. F. Bates, Engineer.

Original on file.

Rec'd for record, Apr. 6, 1899  
with Taking by the Town of Milton  
Filed as Plan No. 1026-Pl. Bk. 23  
Attest: Edw. L. Burdakin  
Asst. Register

Mary S. Dudley

Town of Milton,  
BROOK ROAD  
PLAYGROUND

N. B. Hinckley

Rad. = 571.00

21830 Sq. Ft.

206.46

515.05

788.45

4494

227.1°

531.11

Sq. Ft.

230.71

16988 Sq. Ft.

508.25

Rad. = 495.00

Mary S. Dudley

J. S. Russell

515.05

W. Bronsden

160 Sq. Ft.

37.81

81.50

4.50 Ft.

81.15

81.15

J. M. Forbes

Rad. = 425.00

197.87

T. H. Hinckley

230.71