

A subdivision pl. of lot 30 is filed with certif. 18686
 A subdivision plan of lot 31 is filed with certif. 15572
 16179

A subdivision plan of lots 27 28 29 is filed with certif. 17752
 A plan of lot 19 & a subdivision plan of lot 20 is filed with certif. 18102

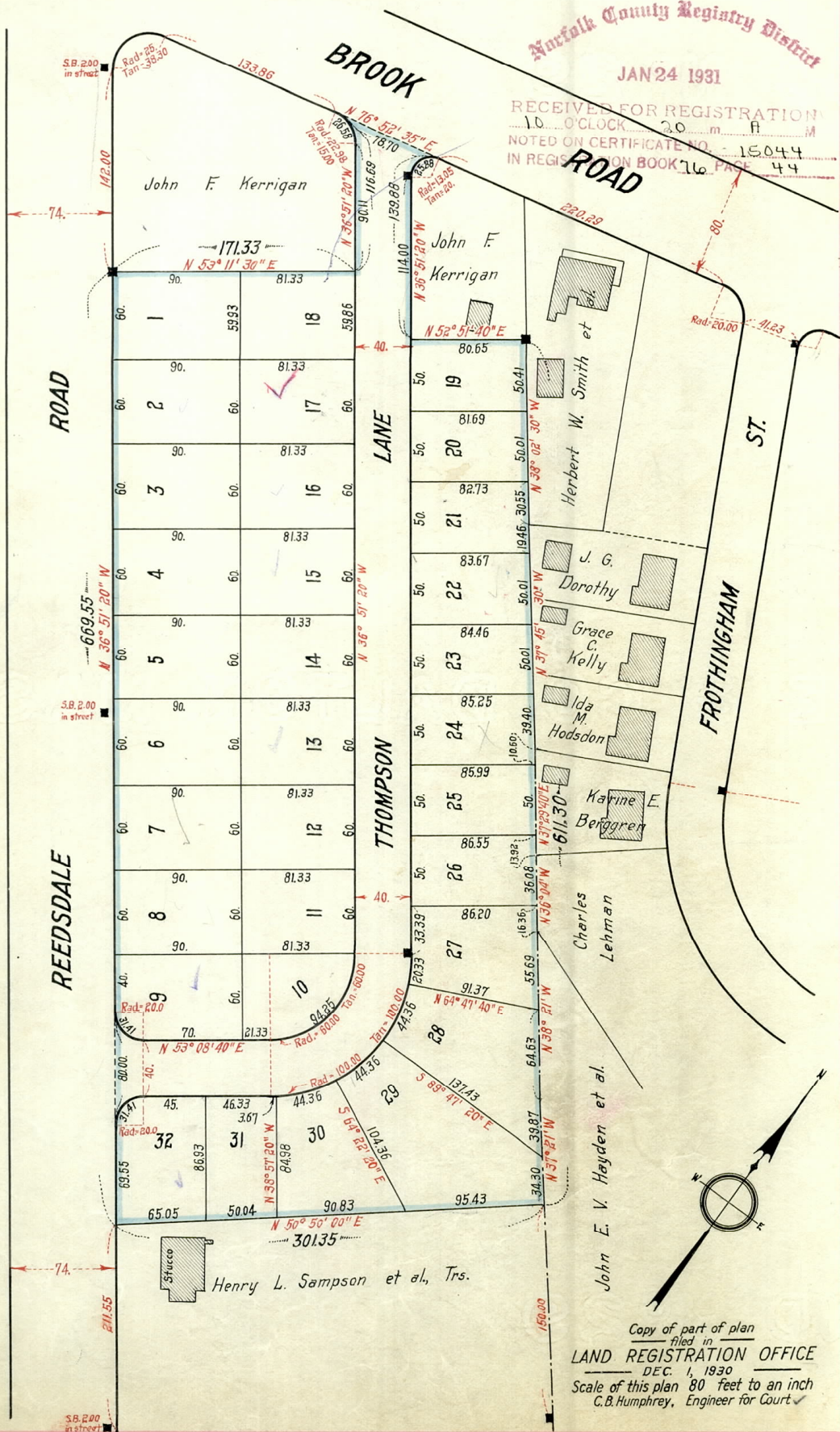
NOT OF LAND IN MILTON NOT
 AN AN
 OFFICIAL, Survey OFFICIAL
 COPY COPY
 NOVEMBER 10, 1930

14534^A

George T. Tilden
 L. C. No. 1694

Norfolk County Registry District
 JAN 24 1931

RECEIVED FOR REGISTRATION
 10 O'CLOCK 30 m A M
 NOTED ON CERTIFICATE NO. 15044
 IN REGISTRATION BOOK 76 PAGE 44



Copy of part of plan
 filed in
 LAND REGISTRATION OFFICE
 DEC. 1, 1930
 Scale of this plan 80 feet to an inch
 C.B. Humphrey, Engineer for Court