

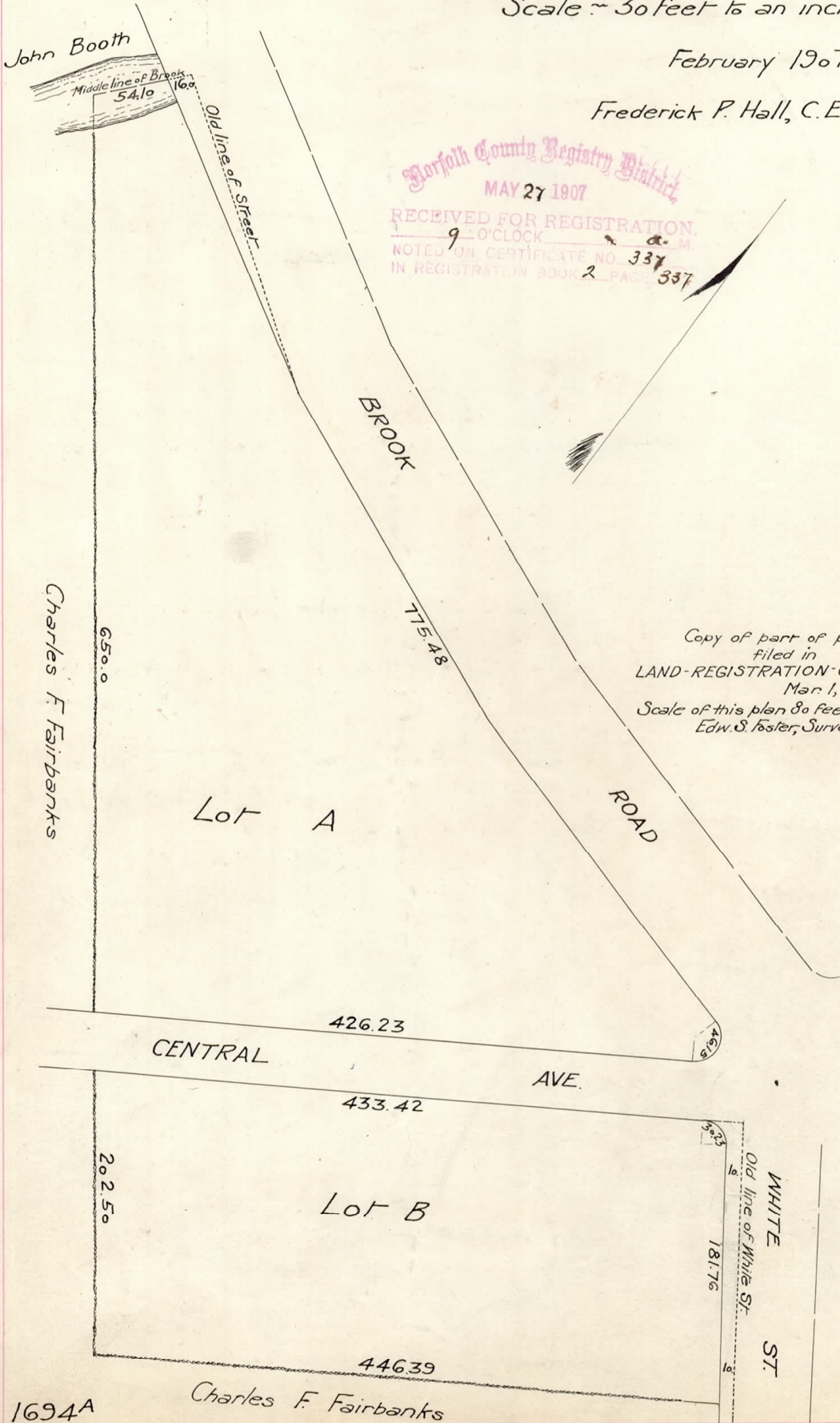
A sub-division pl. of lot B filed with Certif. 7098.

NOT AN OFFICIAL COPY
NOT AN OFFICIAL COPY
Plan of Land in 1907.

Scale ~ 30 feet to an inch.

February 1907.

Frederick P. Hall, C.E.



Norfolk County Registry District
 MAY 27 1907
 RECEIVED FOR REGISTRATION.
 9 O'CLOCK a.m.
 NOTED ON CERTIFICATE NO. 337
 IN REGISTRATION BOOK 2 PAGE 337

Copy of part of plan
 filed in
 LAND-REGISTRATION-OFFICE,
 Mar. 1, 1907.
 Scale of this plan 80 feet = 1 inch.
 Edw. S. Foster, Surveyor for Court.

1694A