

1694^C

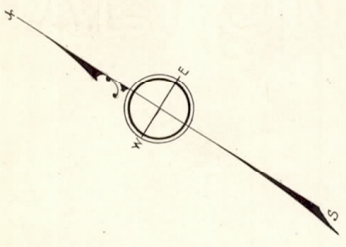
NOT NOT
Subdivision A on Lot B4 shown on plan 1694 A, B, N
OFFICIAL OFFICIAL
Filed with Cert. of Title No. 7998, Registry District of Norfolk County.

LAND IN MILTON

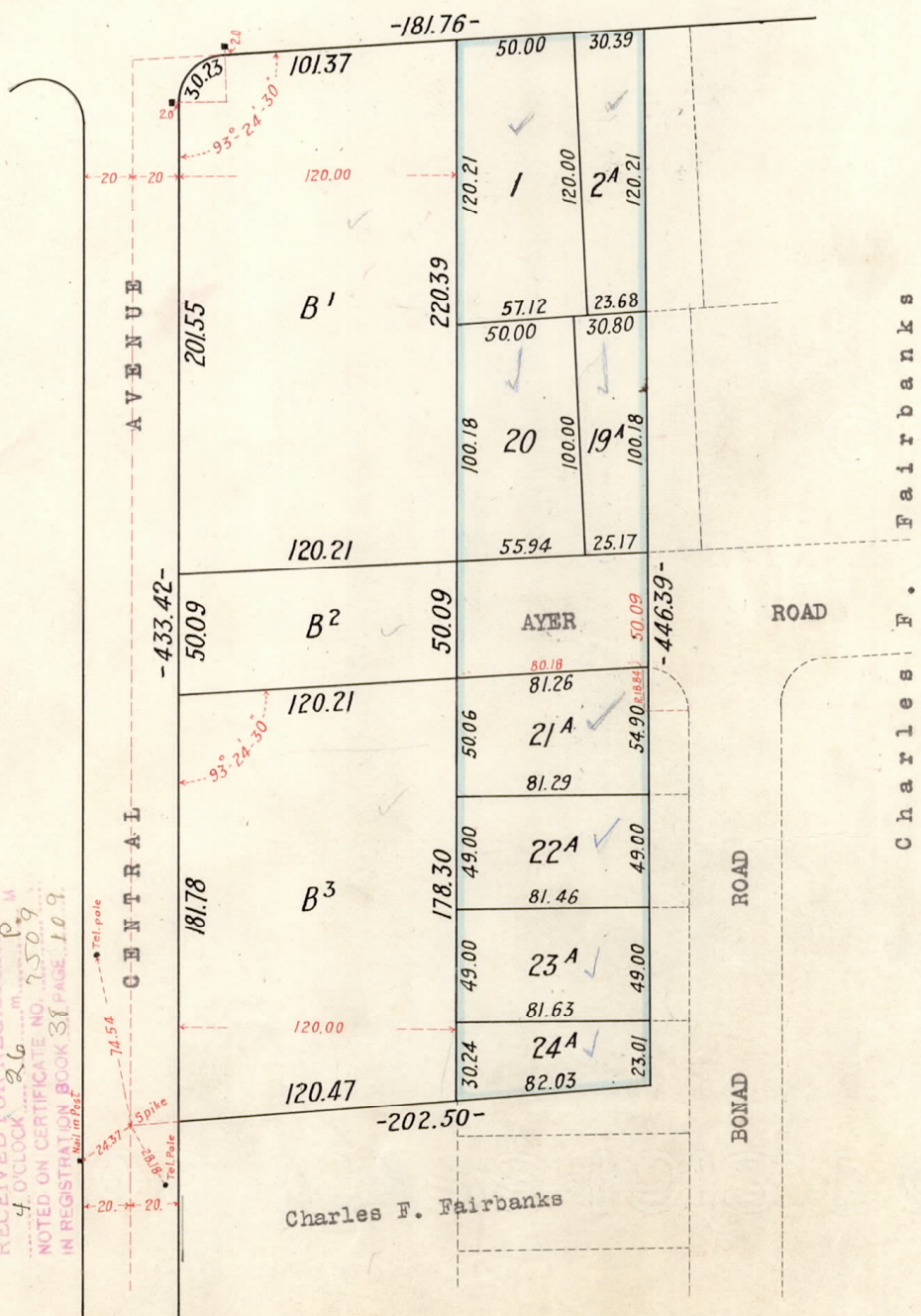
Scale 40 feet to an inch

MARCH 31, 1924

Frederick P. Hall, Surveyor.



WHITE STREET



North County Registry District
SEP 19 1924

RECEIVED FOR REGISTRATION
4 O'CLOCK
NOTED ON CERTIFICATE NO. 7509
IN REGISTRATION BOOK 31 PAGE 1109

Separate certificates of title may be issued for lots 1, 2, 19^A, 20, 21^A to 24^A incl. as shown hereon By the Court

MAY 28, 1924

James Guist
Recorder.

Copy of part of plan filed in
LAND REGISTRATION OFFICE
MAY 20, 1924

Scale of this plan 60 feet to an inch
C. B. Humphrey, Surveyor for Court