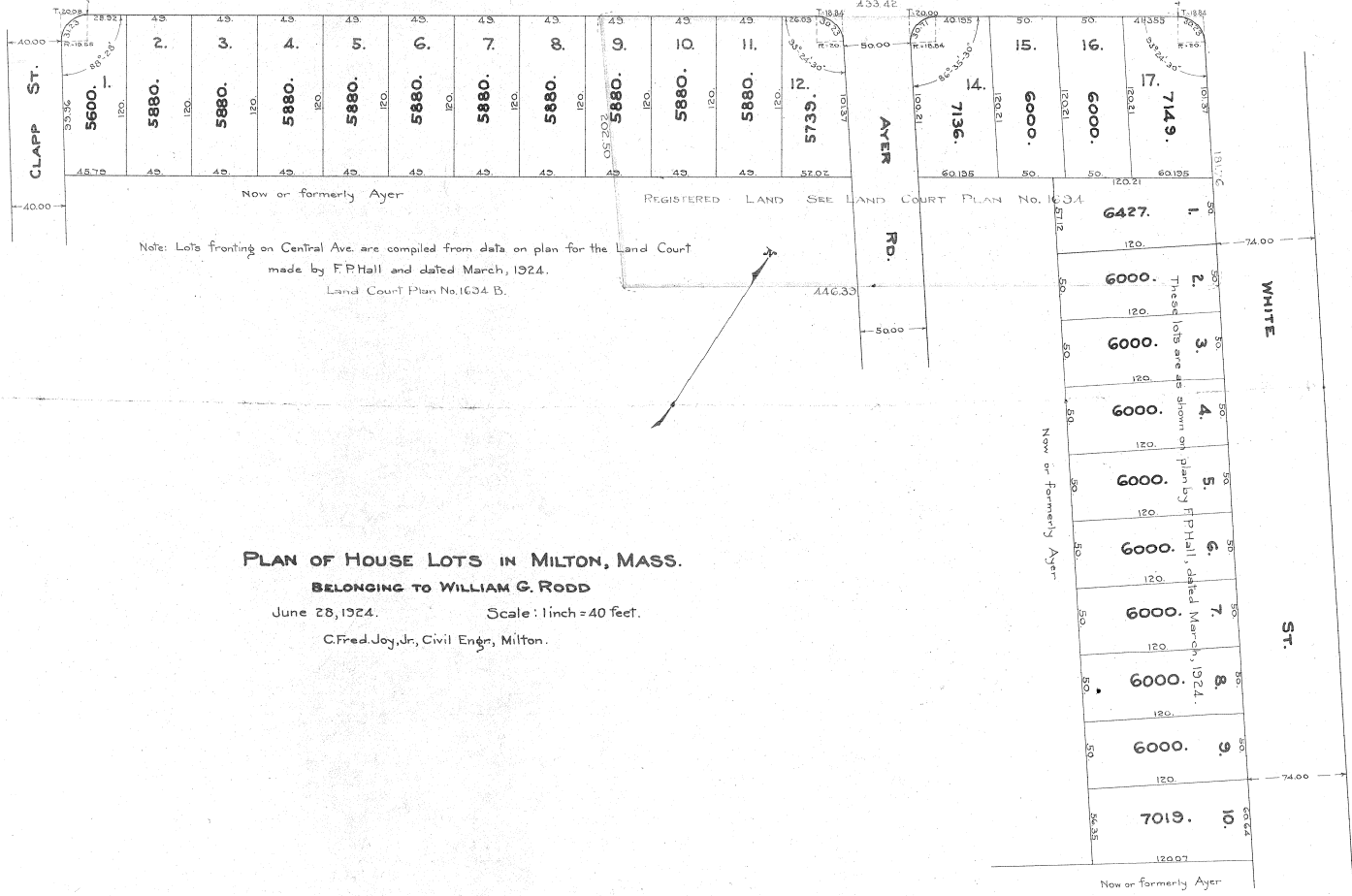


CENTRAL AVENUE



Note: Lots fronting on Central Ave. are compiled from data on plan for the Land Court made by F.P.Hall and dated March, 1924. Land Court Plan No. 1634 B.

**PLAN OF HOUSE LOTS IN MILTON, MASS.**  
**BELONGING TO WILLIAM G. RODD**  
 June 28, 1924. Scale: 1 inch = 40 feet.  
 C. Fred Joy, Jr., Civil Eng., Milton.