

OF E N O N T A R I A L  
A Plan of  
O F E N O N T A R I A L  
M I L T O N  
IN

WHITE ST & CENTRAL AVENUE, MILTON, SHEET 1.

as relocated and widened by the County Commissioners.

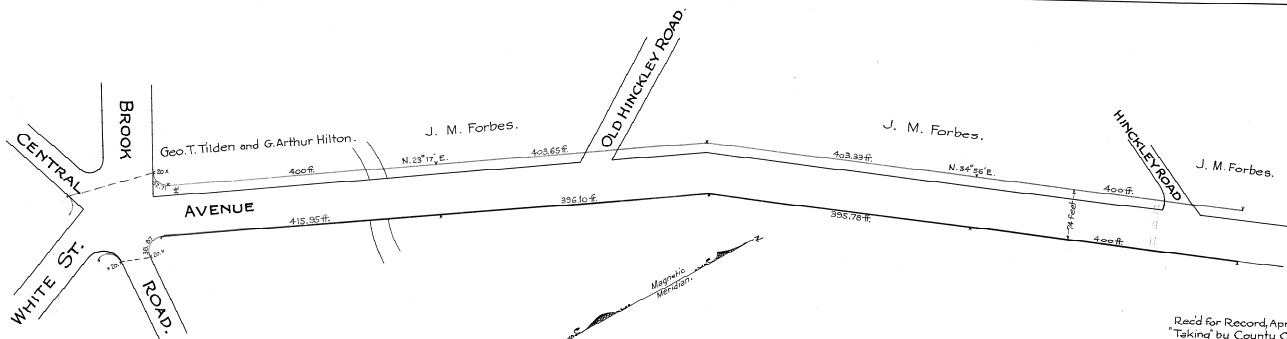
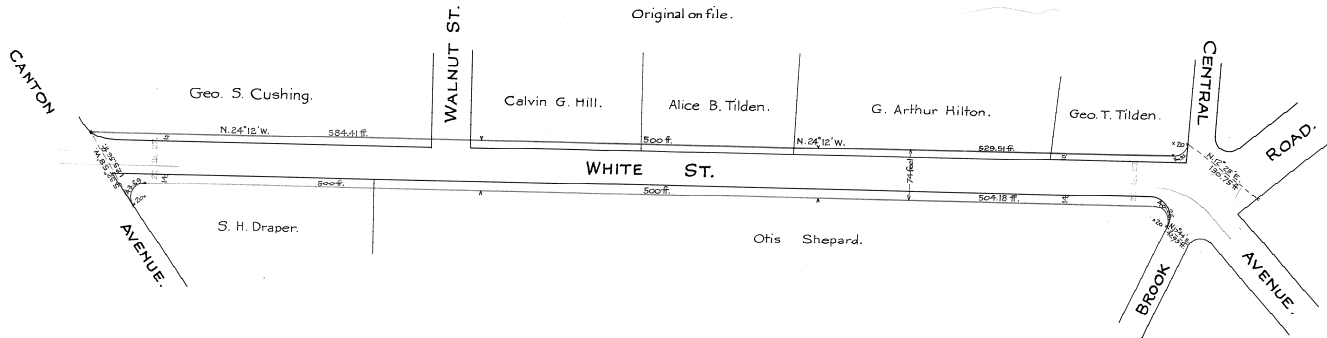
Surveyed, April, 1898 by Frederic Endicott.

Scale Eighty feet to an inch.

Property Lines are from a survey by W. F. Bates, C.E.

[Signed] Thomas Blanchard  
Chairman

Original on file.



Rec'd for Record, April 4, 1899 with  
Taking by County Commissioners  
Filed as Plan No 1015, Pl. Bk. 23.  
Attest: Edw'd L. Durdakin  
Asst. Register.