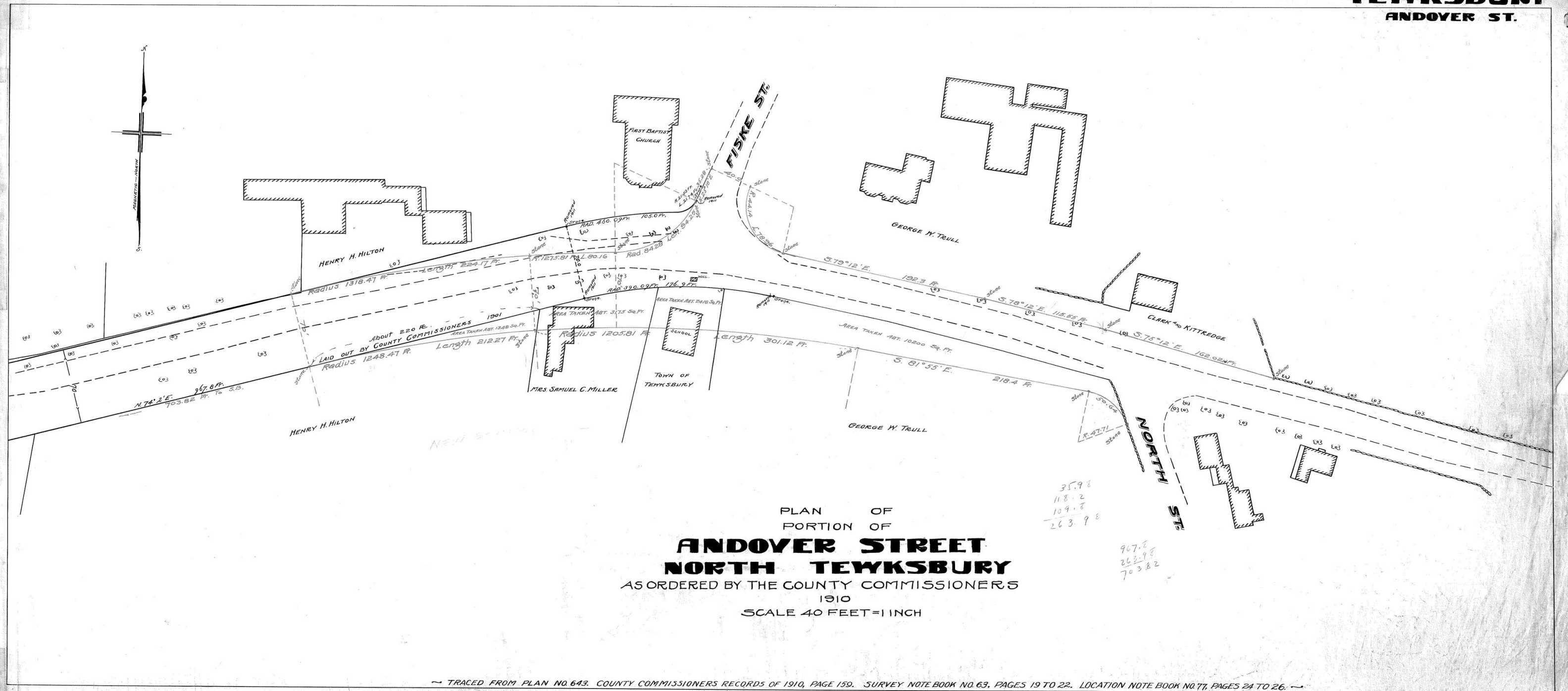
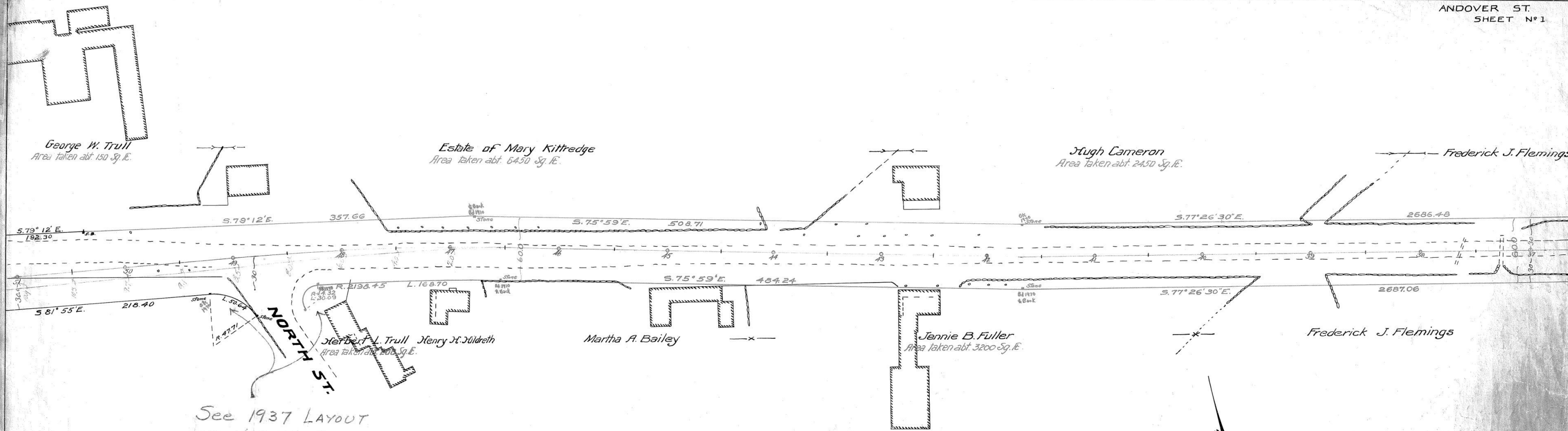


**TEWKSBURY**  
**ANDOVER ST.**



~ TRACED FROM PLAN NO. 643. COUNTY COMMISSIONERS RECORDS OF 1910, PAGE 159. SURVEY NOTE BOOK NO. 63, PAGES 19 TO 22. LOCATION NOTE BOOK NO. 77, PAGES 24 TO 26. ~



See 1937 LAYOUT  
OF NORTH ST.  
FOR NEW ROUNDINGS.

PLAN OF  
**ANDOVER STREET**  
**TEWKSBURY**  
 AS ORDERED BY THE COUNTY COMMISSIONERS.  
 1916.  
 Scale: 1 inch = 40 feet.