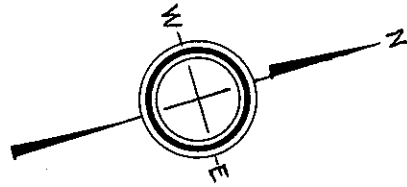
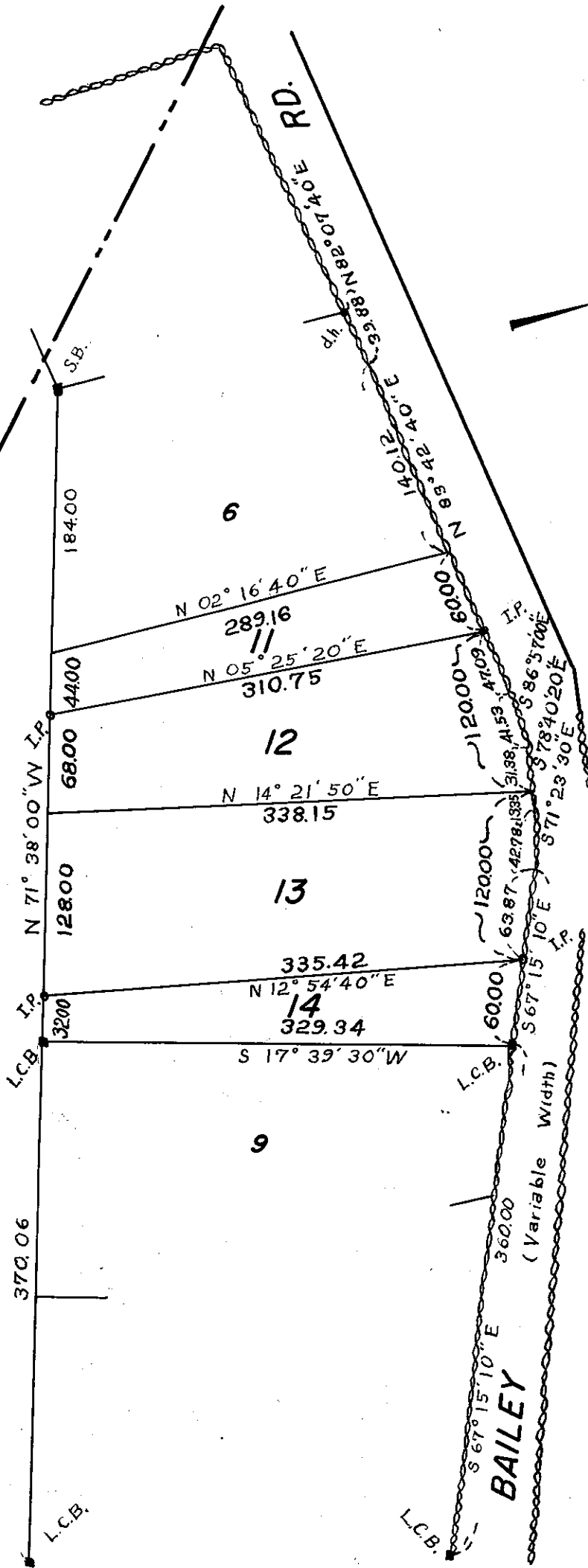


3162^D

TEWKSBURY
ANDOVER



L.C. No. 3162^B Sh-1
Cert. 3358



SUBDIVISION PLAN OF LAND IN ANDOVER

Charles E. Cyr, Surveyor

June 16, 1972

Subdivision of Lots 7 and 8
Shown on Plan 3162^C
Filed with Cert. of Title No. 6305
North Registry District of Essex County

Separate certificates of title may be issued for land
shown hereon as Lots 11, 12, 13 and 14
By the Court.

JUNE 26, 1972

Jeanne M. Maloney
Deputy Recorder

Essex North Registry District
March 9, 1973

RECEIVED FOR REGISTRATION
10:00 CLOCK 45 m 0 M
NOTED ON CERTIFICATE NO. 6832
IN REGISTRATION BOOK 46 PAGE 133

Copy of part of plan
filed in
LAND REGISTRATION OFFICE
JUNE 26, 1972
Scale of this plan 100 feet to an inch
R.L. Woodbury, Engineer for Court