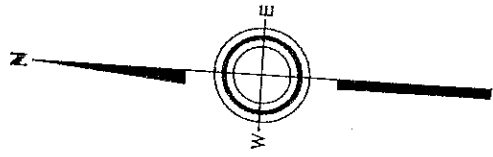
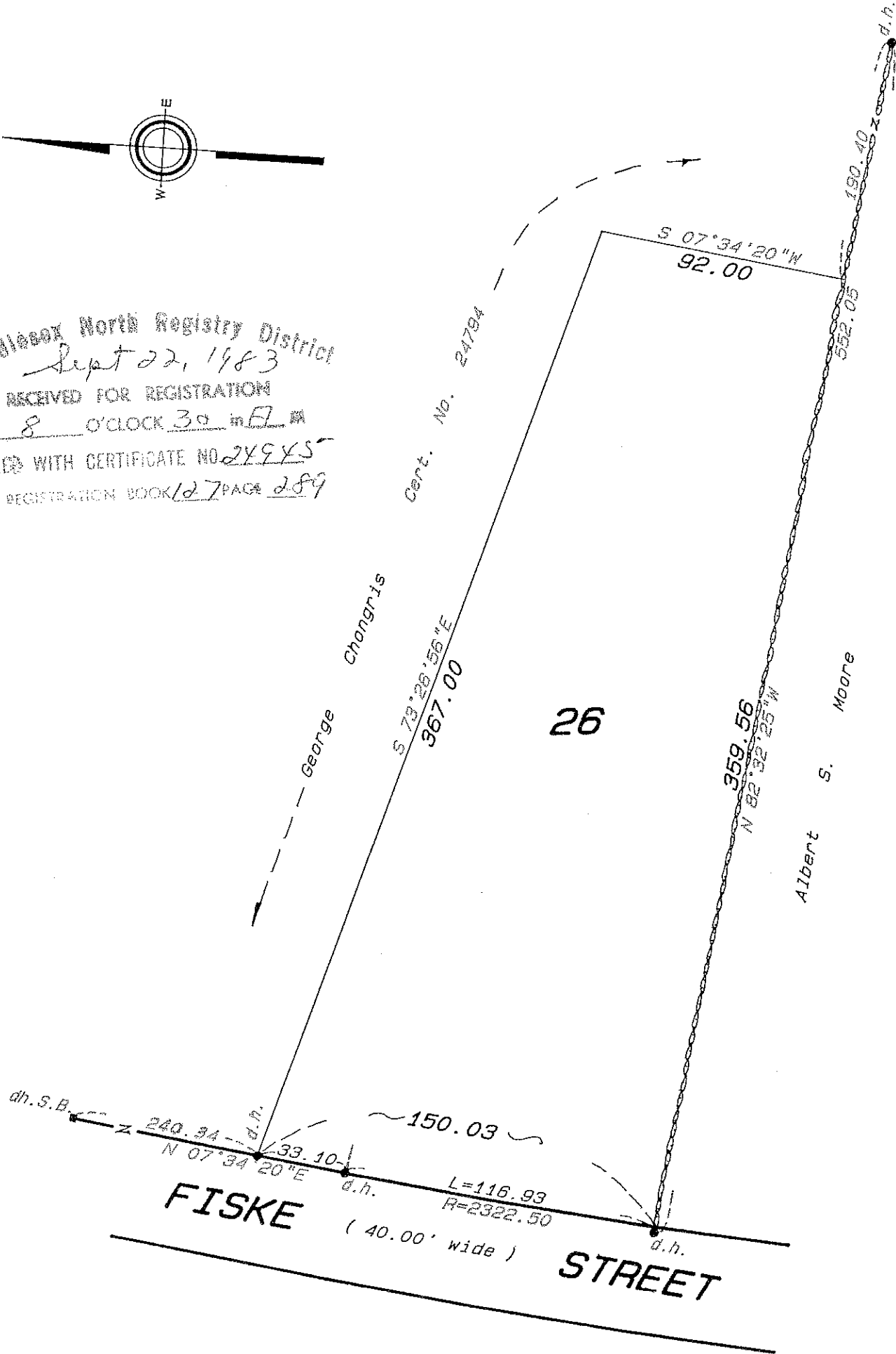


SUBDIVISION PLAN OF LAND IN TEWKSBURY  
William G. Troy & Associates, Surveyors  
October 25, 1982



Middlesex North Registry District  
*Sept 22, 1983*  
RECEIVED FOR REGISTRATION  
*8 O'CLOCK 30 m A.M.*  
FILED WITH CERTIFICATE NO. *2X9X5*  
IN REGISTRATION BOOK *127* PAGE *289*



Subdivision of Part of Lot 25  
Shown on Plan 3162-F  
Filed with Cert. of Title No. 24794  
North Registry District of Middlesex County  
*Separate certificates of title may be issued for land shown hereon as Lot 26*  
By the Court.

Abutters are shown as on original decree plan.

Copy of part of plan filed in  
LAND REGISTRATION OFFICE  
NOV. 12, 1982  
Scale of this plan 50 feet to an inch.  
Louis A. Moore, Engineer for Court

NOV. 12, 1982  
N.B. *James M. Maloney*  
Deputy Recorder.