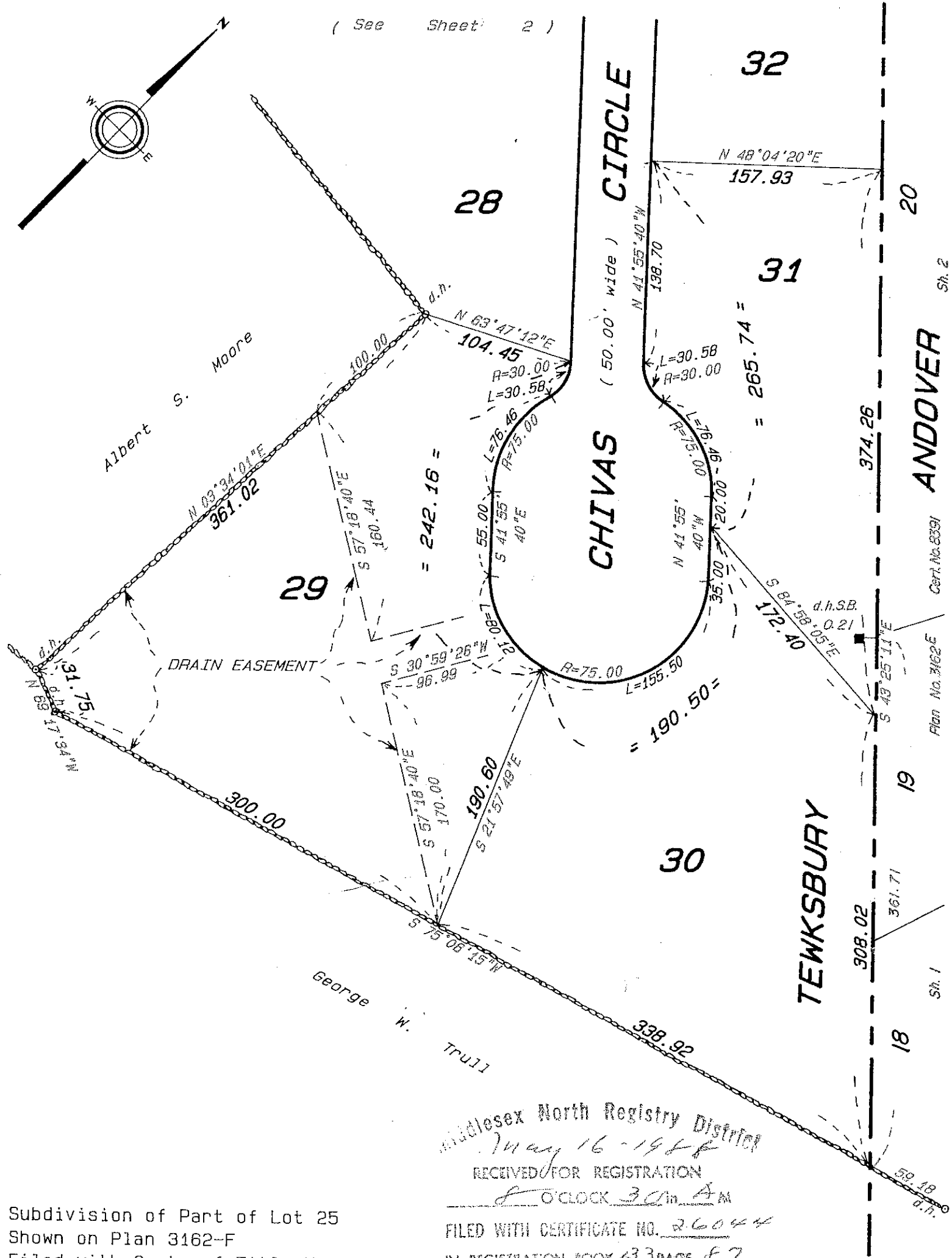
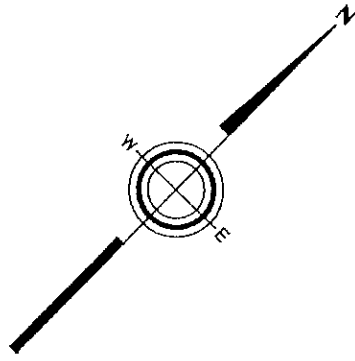


SUBDIVISION PLAN OF LAND IN TEWKSBURY

Wm. G. Troy & Associates, Surveyors

March 10, 1983

(See Sheet 2)



Middlesex North Registry District
May 16 1984

RECEIVED FOR REGISTRATION

8 O'CLOCK 30 in AM
FILED WITH CERTIFICATE NO. 26044

IN REGISTRATION BOOK 133 PAGE 87

Subdivision of Part of Lot 25
Shown on Plan 3162-F
Filed with Cert. of Title No. 24794
North Registry District of Middlesex County
*Separate certificates of title may be issued for land
shown hereon as Lots 27 thru 33*
By the Court.

Abutters are shown as
on original decree plan.

Copy of part of plan
filed in
LAND REGISTRATION OFFICE
AUG. 21, 1984

Scale of this plan 80 feet to an inch.
Louis A. Moore, Engineer for Court

AUG. 21, 1984
N.B.-22

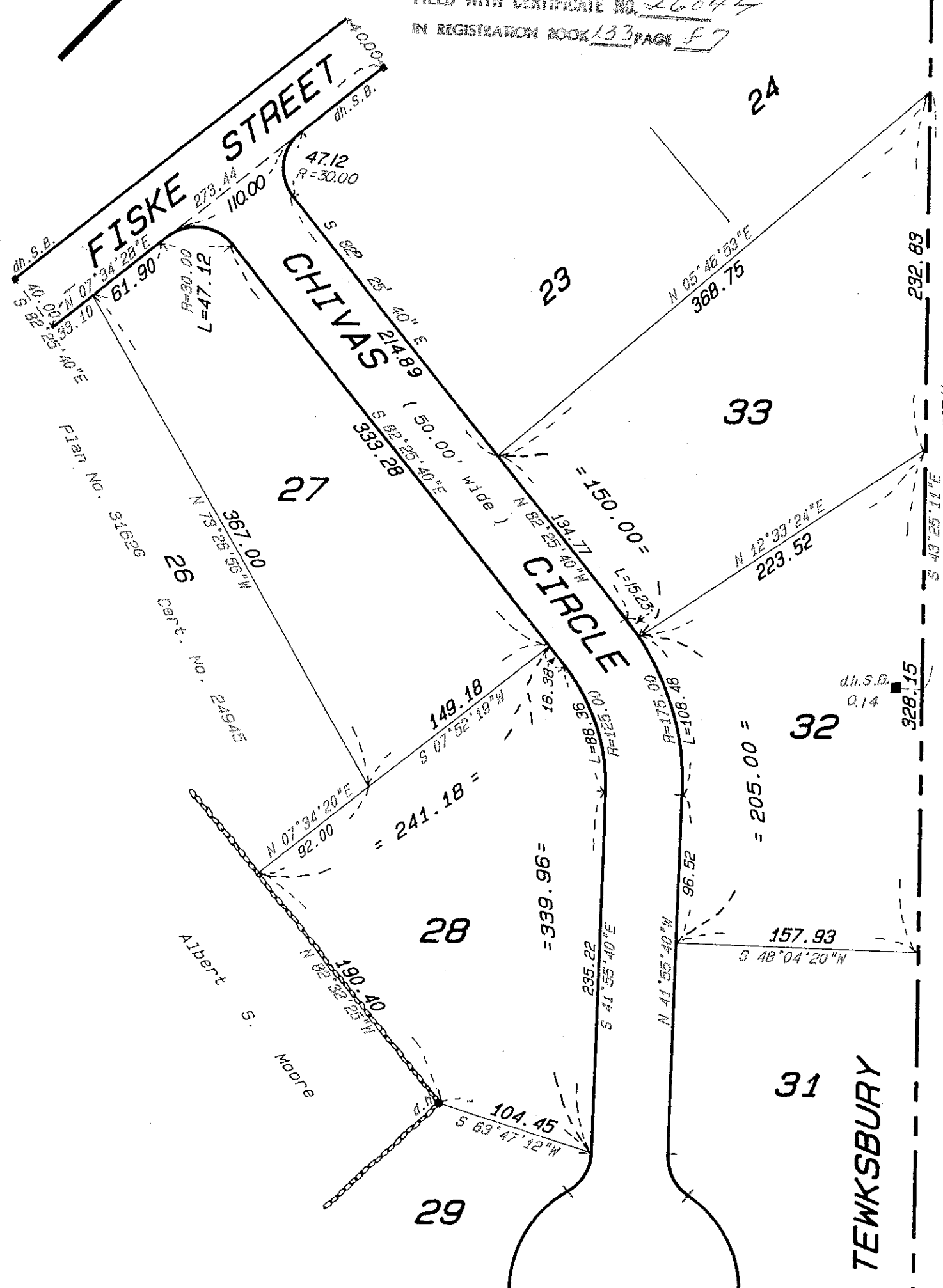
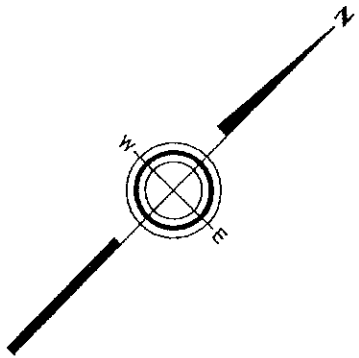
James R. Maloney
Deputy Recorder

Sh. 2
Cert. No. 8391
Plan No. 3162E
Sh. 1

26044

3162H
Sheet 2 of 2

Middlesex North Registry District
May 16-1918
RECEIVED FOR REGISTRATION
8 O'CLOCK 30 in A.M.
FILED WITH CERTIFICATE NO. 26044
IN REGISTRATION BOOK 133 PAGE F7



ANDOVER

Plan No. 3162E Sh. 2 Cert. No. 8391

20

(See Sheet 1)

N.B.-22

Scale of this plan 80 feet to an inch.