

Tuesday, April 20, 2021

Elise Watson
Lighthouse Land Surveying LLC
27 Jefferson Street
Taunton, MA 02780

RE: Regarding your request for utility information for Fiske St & Andover St in Tewksbury, MA.

Dear Elise,

At your request, we have reviewed the above referenced project location and have enclosed National Grid's documents and/or drawings showing the electric distribution facilities in this area.

Your attention is specifically directed to the fact that by submitting these drawings, National Grid under no circumstances guarantees the accuracy of the locations shown on the drawings. It is also imperative that any maps prepared from this information must contain a specific notation stating that all locations of this corporation's facilities are approximate and must be verified in the field before any digging commences. As always, it is the contractor's responsibility to notify Dig Safe at **888-DIG-SAFE (344-7233) or Dial 811 (www.digsafe.com)** prior to any excavations. In the event that our facilities are damaged due to construction, the contractor will be held responsible for payment on a claim basis.

After reviewing the enclosed information, please advise us as soon as possible of any conflicts involving relocation or protection of our facilities. You should be aware that any removal or relocation of facilities may involve associated charges.

For information on potential National Grid owned gas facilities in this area, please send a request to gasdatareq@us.ngrid.com.

Very truly yours,

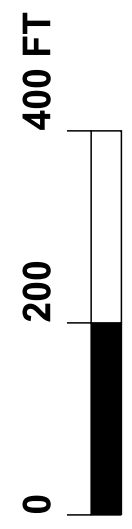
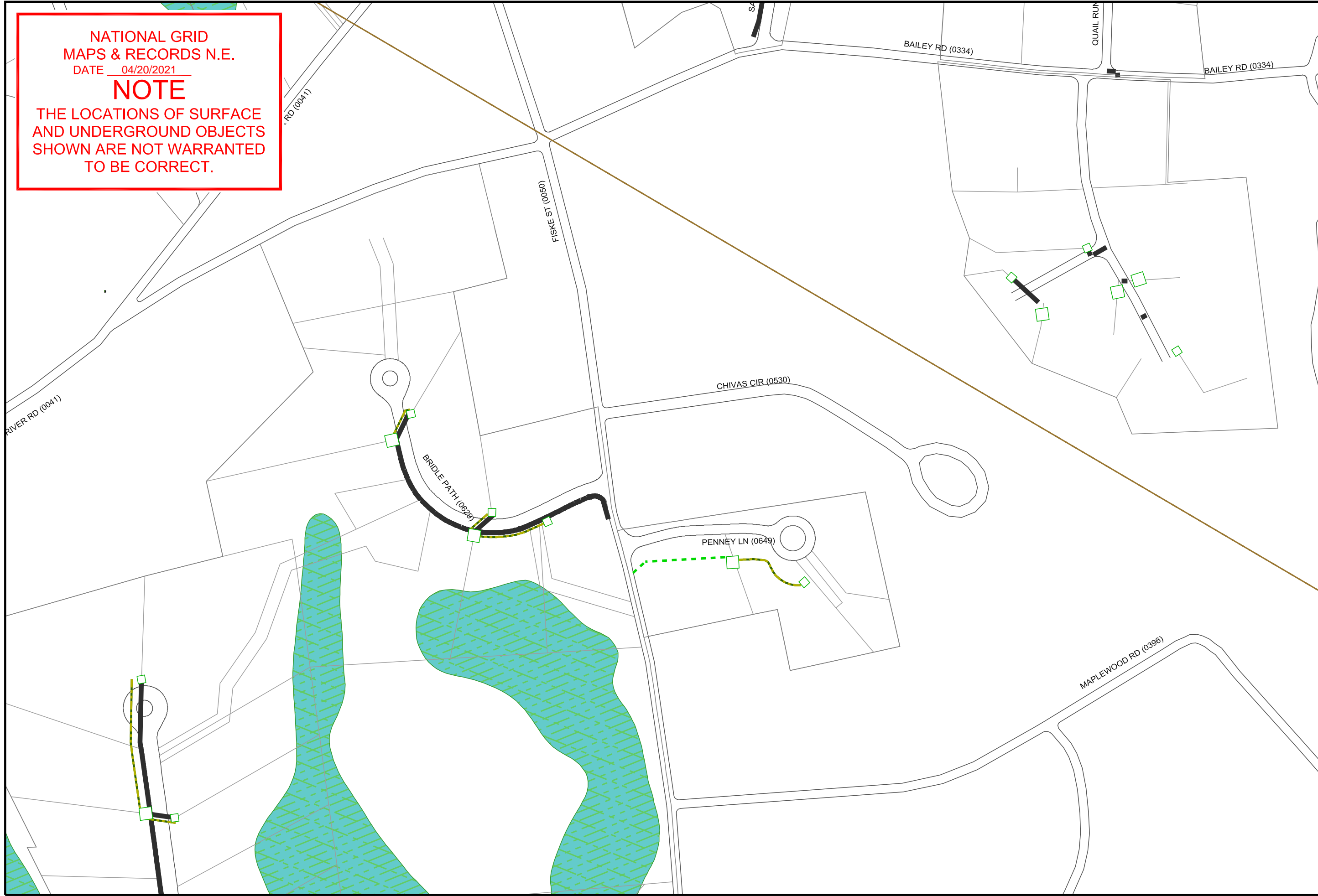
nationalgrid
Maps & Records NE - Electric

Enclosure

NATIONAL GRID
MAPS & RECORDS N.E.
DATE 04/20/2021

NOTE

THE LOCATIONS OF SURFACE
AND UNDERGROUND OBJECTS
SHOWN ARE NOT WARRANTED
TO BE CORRECT.



04/20/2021

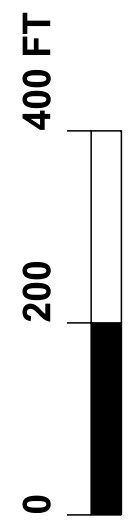


DESCRIPTION:
SHEET 1 OF 1

NATIONAL GRID
MAPS & RECORDS N.E.
DATE 04/20/2021

NOTE
THE LOCATIONS OF SURFACE
AND UNDERGROUND OBJECTS
SHOWN ARE NOT WARRANTED
TO BE CORRECT.

- Handhole
- Manhole
- Pullbox
- Pad
- Vault
- Conduit
- Direct Buried Cable



04/20/2021



DESCRIPTION:

