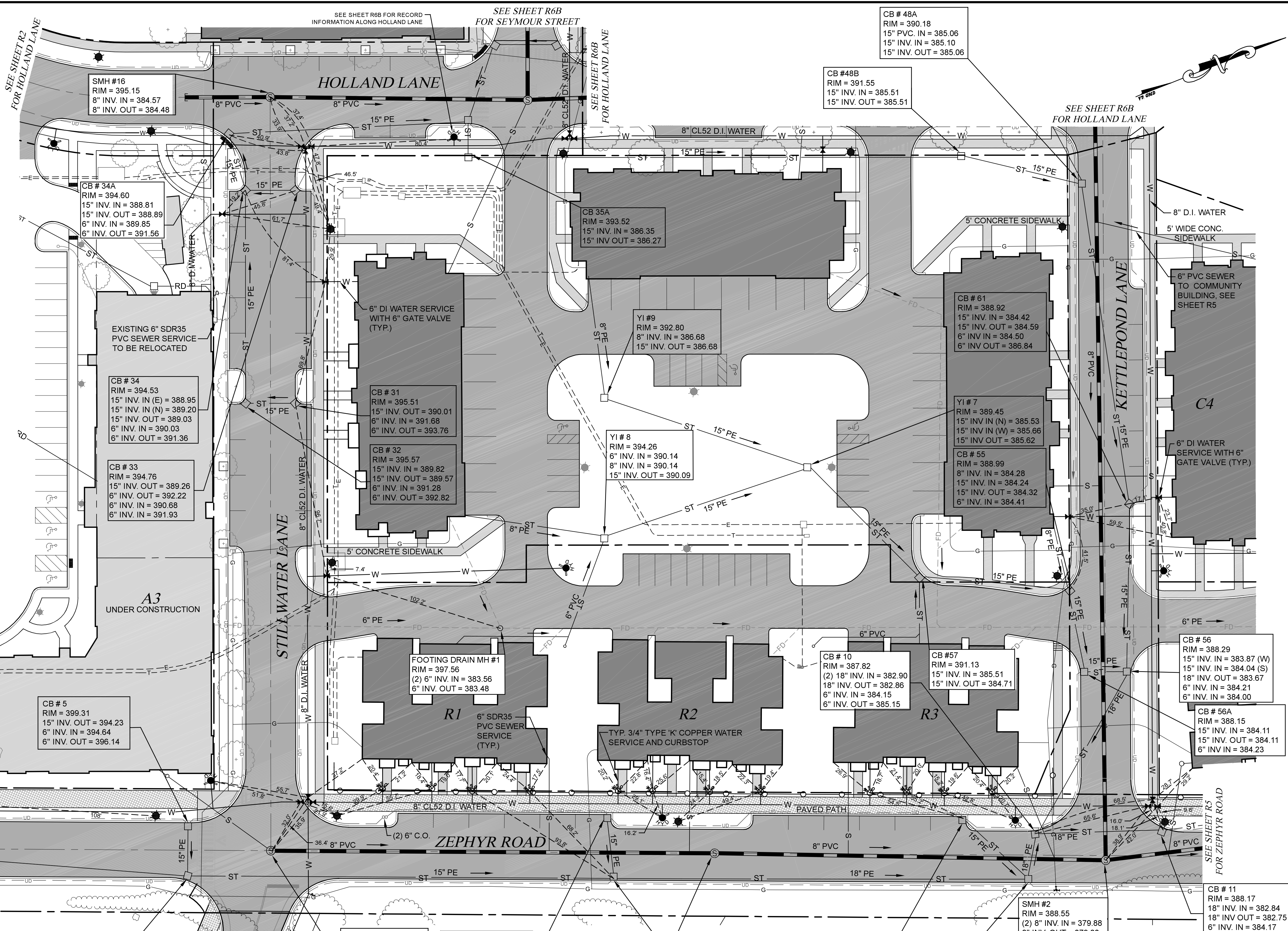
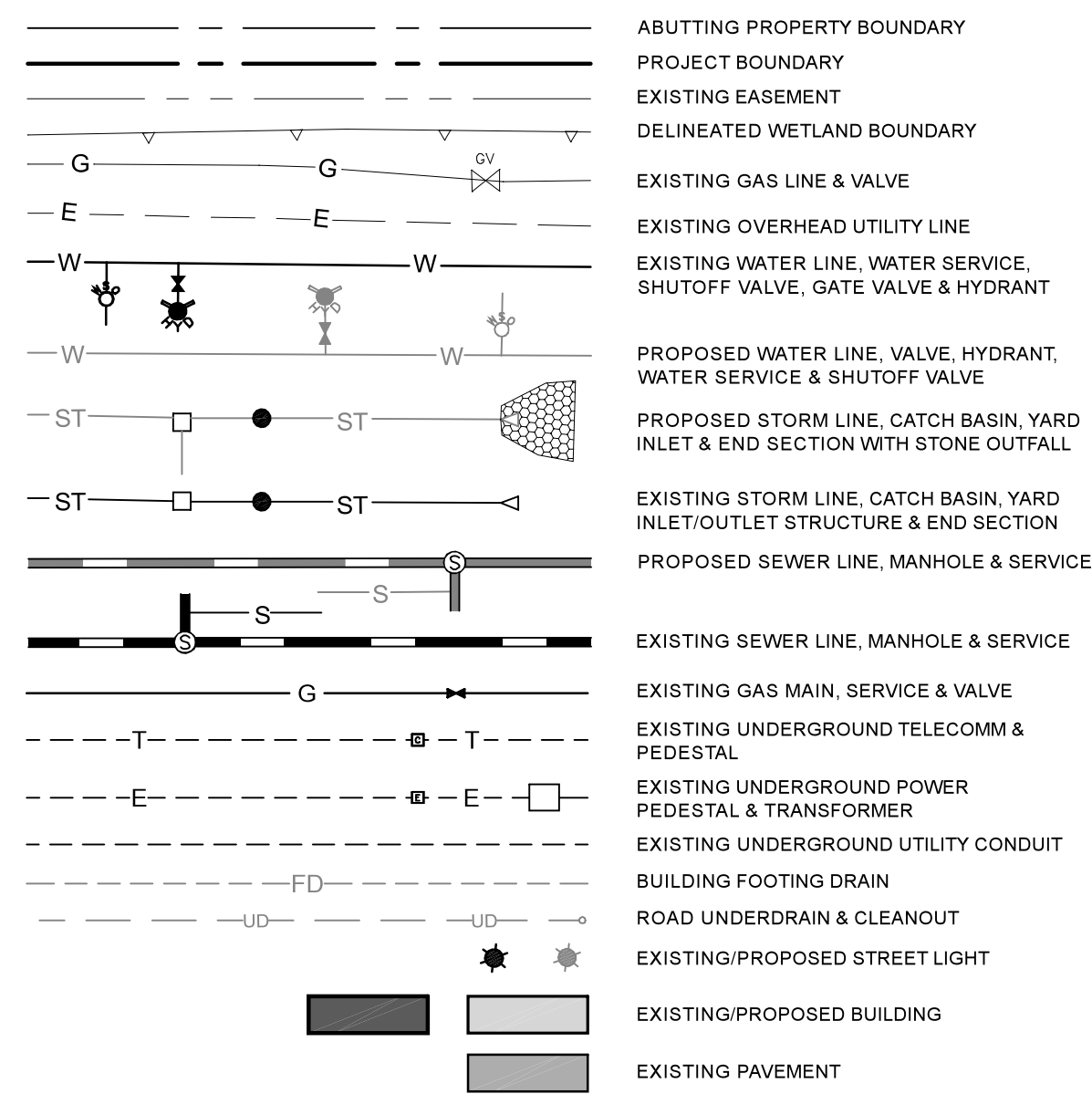


LEGEND



THIS PLAN WAS REVISED IN NOVEMBER 2017 TO SHOW THE RECORD HORIZONTAL LOCATIONS AND TIES TO THE FOLLOWING ITEMS:

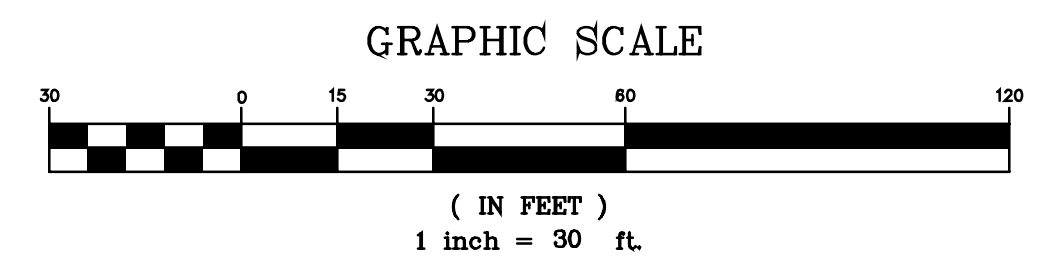
- HYDRANTS, VALVES, CURB STOPS

THIS PLAN WAS REVISED IN OCTOBER 2019 TO SHOW THE RECORD HORIZONTAL LOCATIONS OF THE FOLLOWING ITEMS:

- SANITARY MANHOLES, SEWER MAINS & SERVICES
- STORM MAHOLES, CATCH BASINS & STORM PIPES
- WATERMAIN, WATER SERVICES
- GAS MAINS, GAS SERVICES & GAS VALVES
- UNDERGROUND ELECTRIC, CABLE & TELECOMM. CONDUITS
- TRANSFORMER PADS, ELECTRIC PEDESTALS, CABLE PEDESTALS & TELECOMM. PEDESTALS
- LIGHT POLES

THIS PLAN WAS REVISED IN OCTOBER 2019 TO SHOW THE RECORD VERTICAL ELEVATIONS OF THE FOLLOWING ITEMS:

- SANITARY MANHOLE RIMS, SEWER MAIN INVERTS
- STORM MANHOLE RIMS, CATCH BASIN RIMS/GRATES, STORM PIPE INVERTS



WILLISTON DISCRETIONARY PERMIT DP-09-01
 TAX PARCEL # 08104010, 08143002, 004, & 010

REVISIONS		# OF SHEETS
THESE PLANS WITH LATEST REVISIONS SHOULD ONLY BE USED FOR THE PURPOSE SHOWN BELOW:		
<input type="checkbox"/>	SKETCH/CONCEPT	
<input type="checkbox"/>	PRELIMINARY	
<input type="checkbox"/>	FINAL	
<input checked="" type="checkbox"/>	RECORD DRAWING	

DRAFT

FINNEY CROSSING

A PLANNED UNIT DEVELOPMENT
 WILLISTON, VERMONT
 - PLAN -
 ZEPHYR ROAD,
 KETTLEPOND LANE &
 STILL WATER LANE

proj. no. 01-087	survey L&D
design DJG/ABR	drawn L&D
checked DJG/ABR	date 11/27/17
scale AS SHOWN	sh. no. R4

LAMOREUX & DICKINSON
 Consulting Engineers, Inc.
 14 Morse Drive
 Essex Junction, VT 05452
 (802) 878-4450