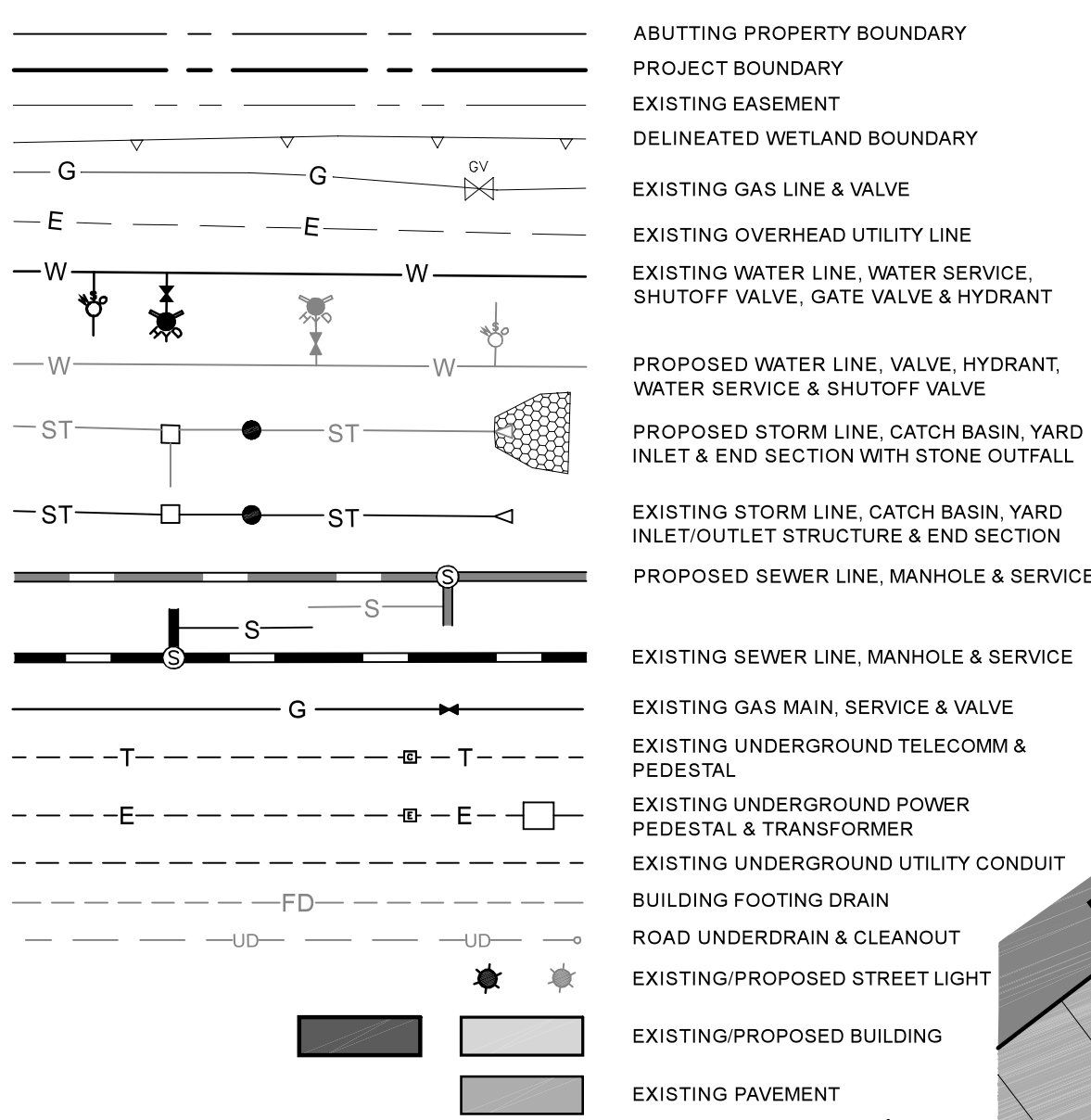
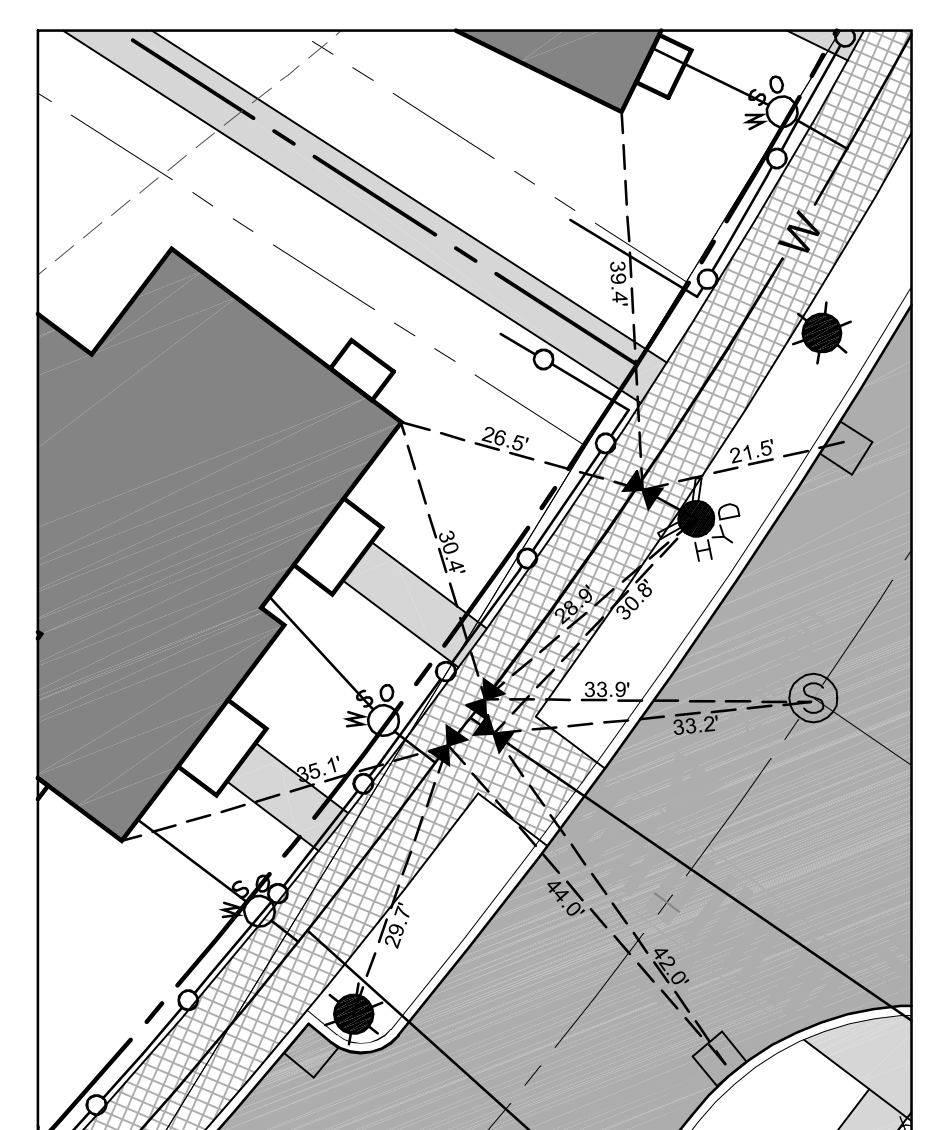
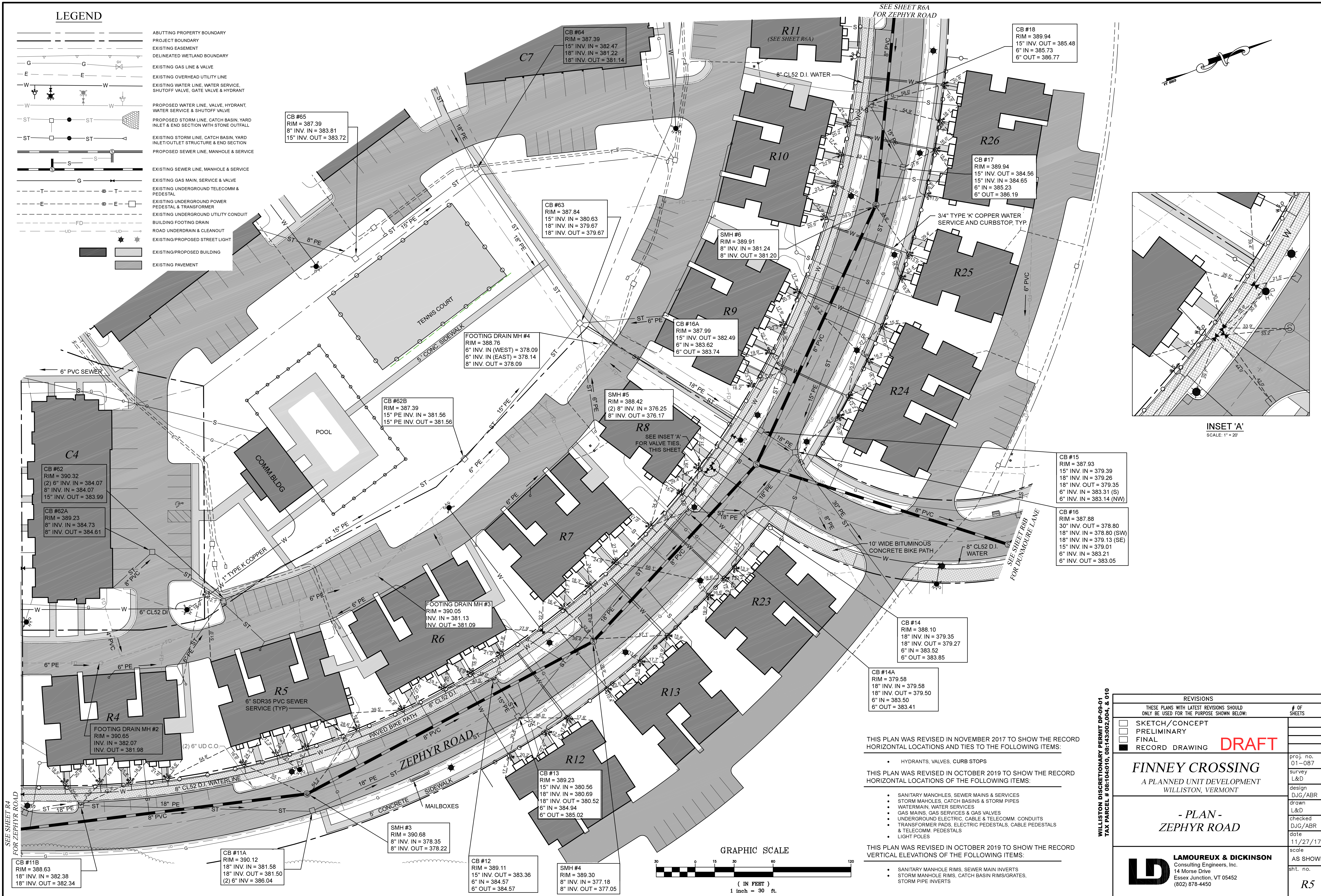


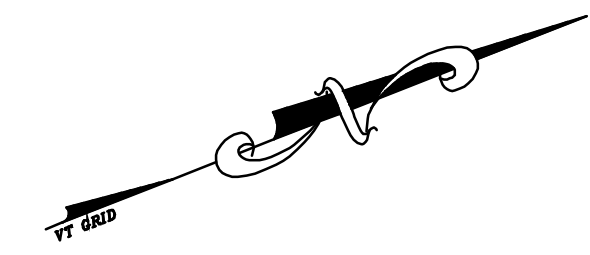
LEGEND



ABUTTING PROPERTY BOUNDARY
 PROJECT BOUNDARY
 EXISTING EASEMENT
 DELINEATED WETLAND BOUNDARY
 EXISTING GAS LINE & VALVE
 EXISTING OVERHEAD UTILITY LINE
 EXISTING WATER LINE, WATER SERVICE, SHUTOFF VALVE, GATE VALVE & HYDRANT
 PROPOSED WATER LINE, VALVE, HYDRANT, WATER SERVICE & SHUTOFF VALVE
 PROPOSED STORM LINE, CATCH BASIN, YARD INLET & END SECTION WITH STONE OUTFALL
 EXISTING STORM LINE, CATCH BASIN, YARD INLET/OUTLET STRUCTURE & END SECTION
 PROPOSED SEWER LINE, MANHOLE & SERVICE
 EXISTING SEWER LINE, MANHOLE & SERVICE
 EXISTING GAS MAIN, SERVICE & VALVE
 EXISTING UNDERGROUND TELECOMM & PEDESTAL
 EXISTING UNDERGROUND POWER PEDESTAL & TRANSFORMER
 EXISTING UNDERGROUND UTILITY CONDUIT
 BUILDING FOOTING DRAIN
 ROAD UNDERDRAIN & CLEANOUT
 EXISTING/PROPOSED STREET LIGHT
 EXISTING/PROPOSED BUILDING
 EXISTING PAVEMENT



INSET 'A'
SCALE: 1" = 20'



CB #11B
 RIM = 388.63
 18" INV. IN = 382.38
 18" INV. OUT = 382.34

CB #11A
 RIM = 390.12
 18" INV. IN = 381.58
 18" INV. OUT = 381.50
 (2) 6" INV = 386.04

SMH #3
 RIM = 390.68
 8" INV. IN = 378.35
 8" INV. OUT = 378.22

CB #12
 RIM = 389.11
 15" INV. OUT = 383.36
 6" INV. IN = 384.57
 6" OUT = 384.57

SMH #4
 RIM = 389.30
 8" INV. IN = 377.18
 8" INV. OUT = 377.05

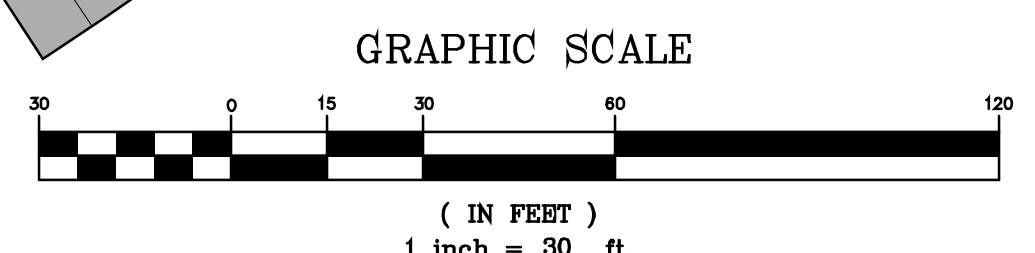
CB #13
 RIM = 389.23
 15" INV. IN = 380.56
 18" INV. IN = 380.69
 18" INV. OUT = 380.52
 6" IN = 384.94
 6" OUT = 385.02

CB #14
 RIM = 388.10
 18" INV. IN = 379.35
 18" INV. OUT = 379.27
 6" IN = 383.52
 6" OUT = 383.41

CB #14A
 RIM = 379.58
 18" INV. IN = 379.58
 18" INV. OUT = 379.50
 6" IN = 383.50
 6" OUT = 383.41

CB #15
 RIM = 387.93
 15" INV. IN = 379.39
 18" INV. IN = 379.26
 18" INV. OUT = 379.35
 6" INV. IN = 383.31 (S)
 6" INV. IN = 383.14 (NW)

CB #16
 RIM = 387.88
 30" INV. OUT = 378.80
 18" INV. IN = 378.80 (SW)
 18" INV. IN = 379.13 (SE)
 15" INV. IN = 379.01
 6" INV. IN = 383.21
 6" INV. OUT = 383.05



THIS PLAN WAS REVISED IN NOVEMBER 2017 TO SHOW THE RECORD HORIZONTAL LOCATIONS AND TIES TO THE FOLLOWING ITEMS:

- HYDRANTS, VALVES, CURB STOPS

THIS PLAN WAS REVISED IN OCTOBER 2019 TO SHOW THE RECORD HORIZONTAL LOCATIONS OF THE FOLLOWING ITEMS:

- SANITARY MANHOLES, SEWER MAINS & SERVICES
- STORM MAHOLES, CATCH BASINS & STORM PIPES
- WATERMAIN, WATER SERVICES
- GAS MAINS, GAS SERVICES & GAS VALVES
- UNDERGROUND ELECTRIC, CABLE & TELECOMM. CONDUITS
- TRANSFORMER PADS, ELECTRIC PEDESTALS, CABLE PEDESTALS & TELECOMM. PEDESTALS
- LIGHT POLES

THIS PLAN WAS REVISED IN OCTOBER 2019 TO SHOW THE RECORD VERTICAL ELEVATIONS OF THE FOLLOWING ITEMS:

- SANITARY MAN-HOLE RIMS, SEWER MAIN INVERTS
- STORM MANHOLE RIMS, CATCH BASIN RIMS/GRATES, STORM PIPE INVERTS

WILLISTON DISCRETIONARY PERMIT DP-09-01
 TAX PARCEL # 08:104:010, 08:143:002, 004, & 010

REVISIONS		# OF SHEETS
THESE PLANS WITH LATEST REVISIONS SHOULD ONLY BE USED FOR THE PURPOSE SHOWN BELOW:		
<input type="checkbox"/>	SKETCH/CONCEPT	
<input type="checkbox"/>	PRELIMINARY	
<input type="checkbox"/>	FINAL	
<input checked="" type="checkbox"/>	RECORD DRAWING	DRAFT
FINNEY CROSSING A PLANNED UNIT DEVELOPMENT WILLISTON, VERMONT		proj. no. 01-087
- PLAN - ZEPHYR ROAD		survey L&D design DJG/ABR drawn L&D checked DJG/ABR date 11/27/17 scale AS SHOWN sht. no. R5
LD LAMOUREUX & DICKINSON Consulting Engineers, Inc. 14 Morse Drive Essex Junction, VT 05452 (802) 878-4450		