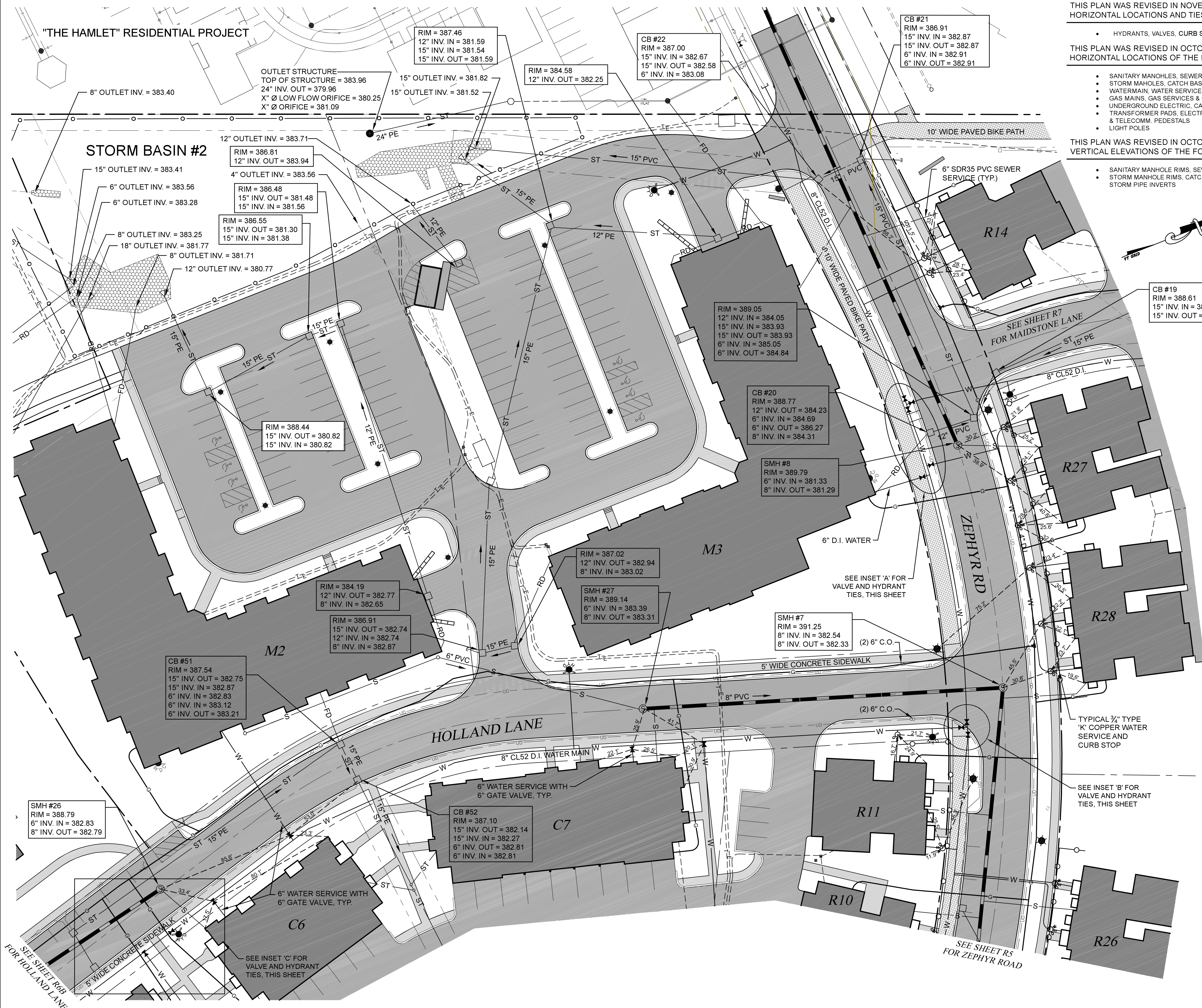


"THE HAMLET" RESIDENTIAL PROJECT



THIS PLAN WAS REVISED IN NOVEMBER 2017 TO SHOW THE RECORD HORIZONTAL LOCATIONS AND TIES TO THE FOLLOWING ITEMS:

- HYDRANTS, VALVES, CURB STOPS

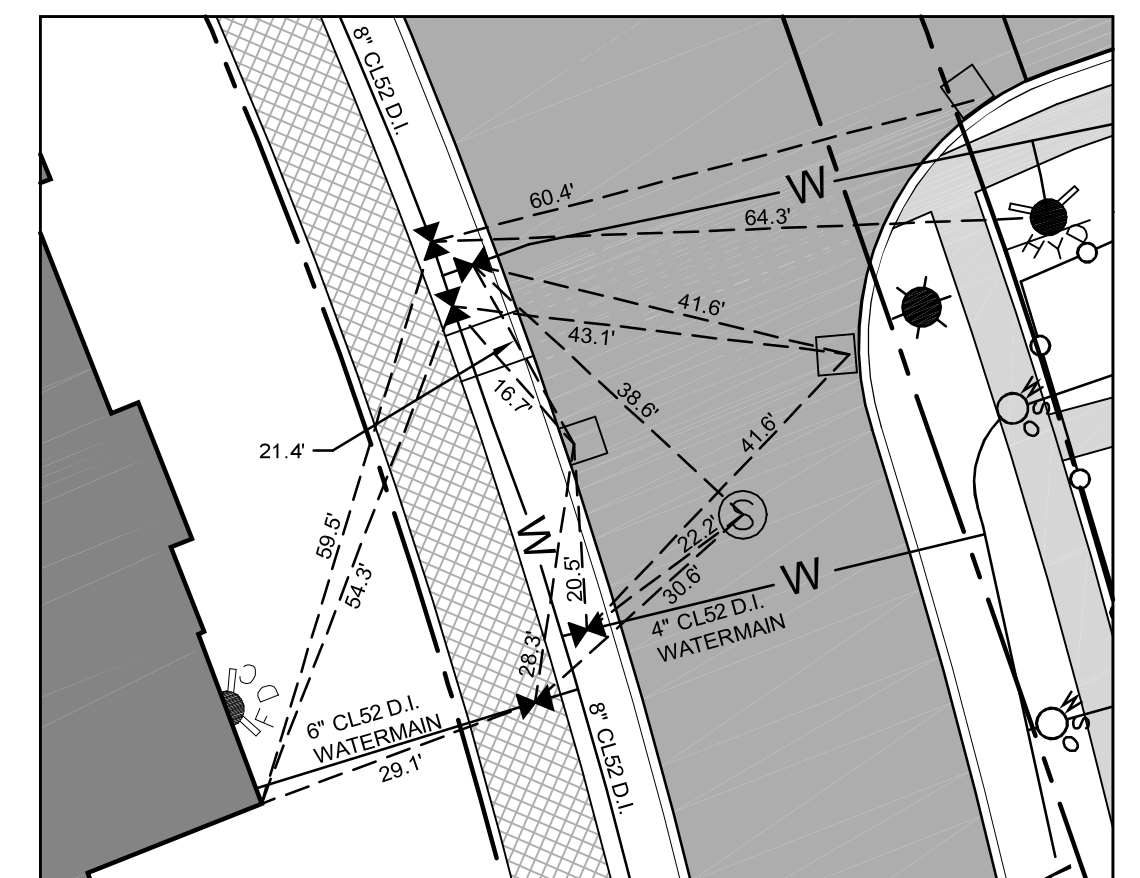
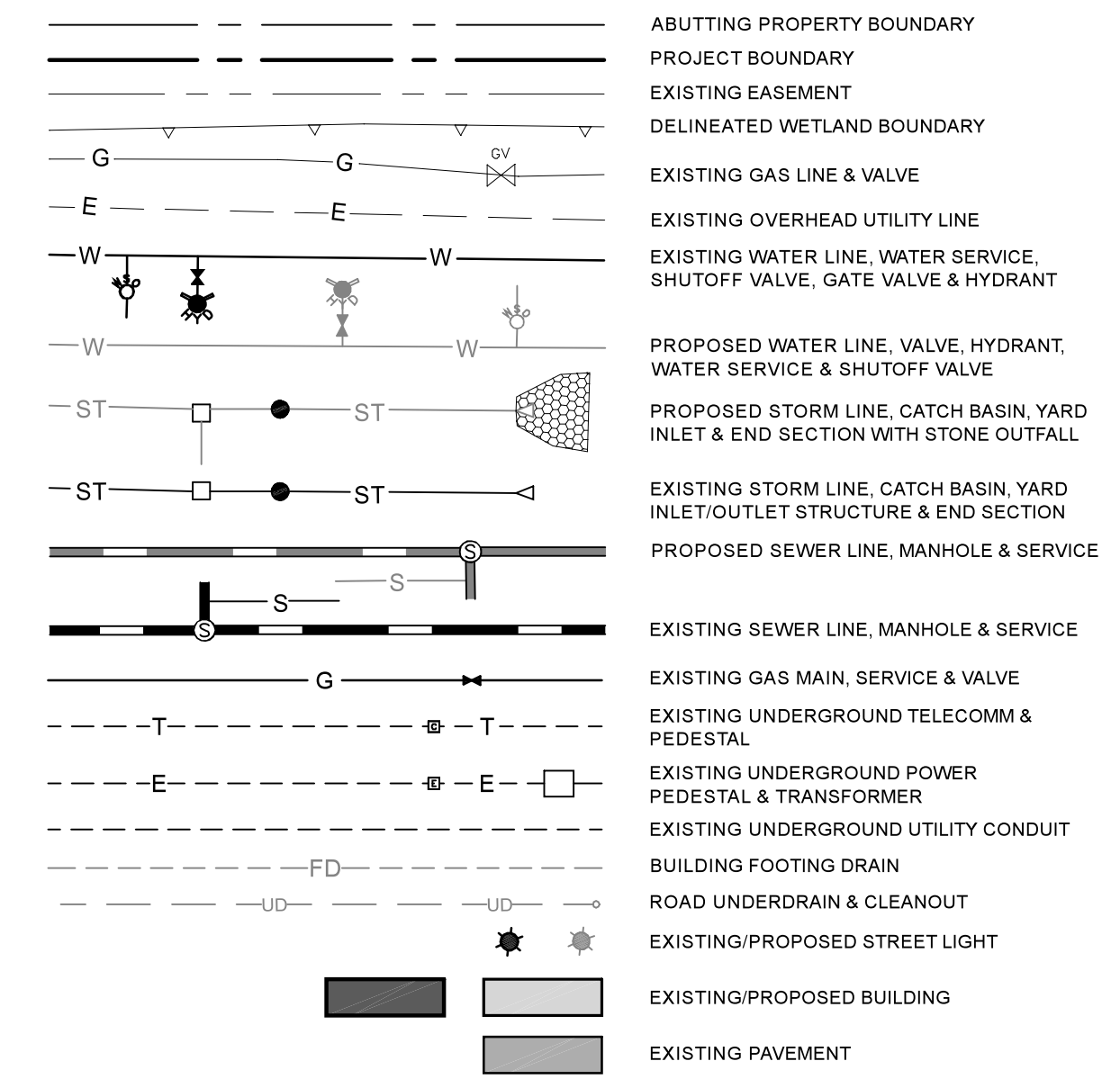
THIS PLAN WAS REVISED IN OCTOBER 2019 TO SHOW THE RECORD HORIZONTAL LOCATIONS OF THE FOLLOWING ITEMS:

- SANITARY MANHOLES, SEWER MAINS & SERVICES
- STORM MAHOLES, CATCH BASINS & STORM PIPES
- WATERMAIN, WATER SERVICES
- GAS MAINS, GAS SERVICES & GAS VALVES
- UNDERGROUND ELECTRIC, CABLE & TELECOMM. CONDUITS
- TRANSFORMER PADS, ELECTRIC PEDESTALS, CABLE PEDESTALS & TELECOMM. PEDESTALS
- LIGHT POLES

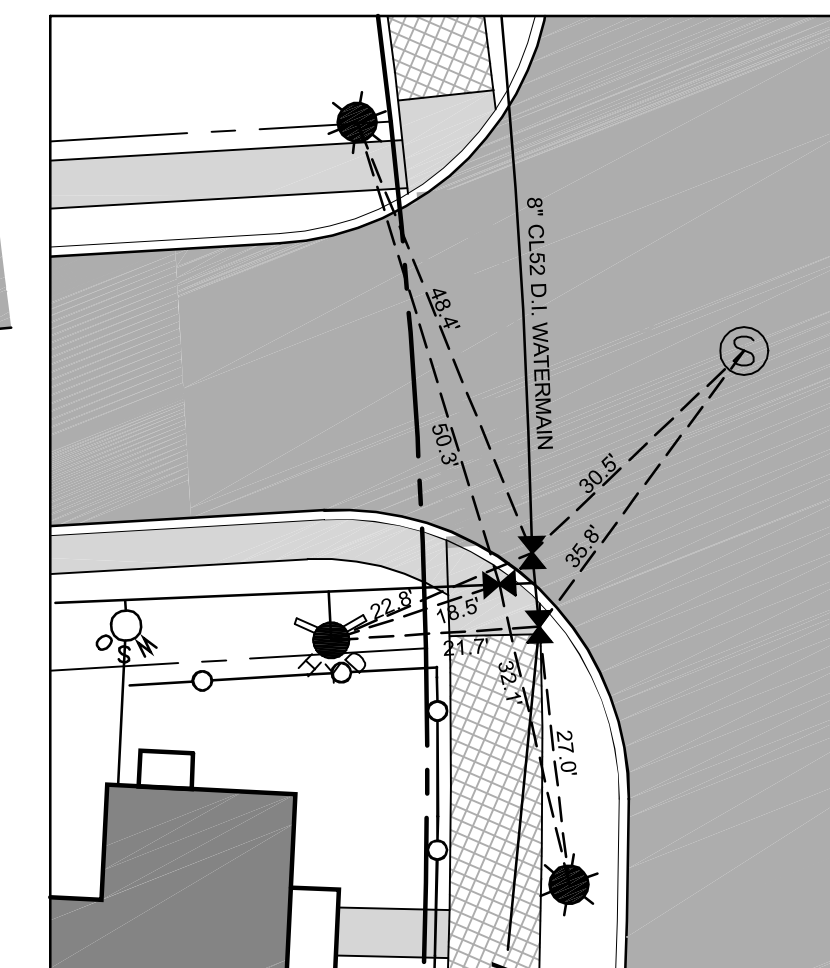
THIS PLAN WAS REVISED IN OCTOBER 2019 TO SHOW THE RECORD VERTICAL ELEVATIONS OF THE FOLLOWING ITEMS:

- SANITARY MANHOLE RIMS, SEWER MAIN INVERTS
- STORM MANHOLE RIMS, CATCH BASIN RIMS/GRATES, STORM PIPE INVERTS

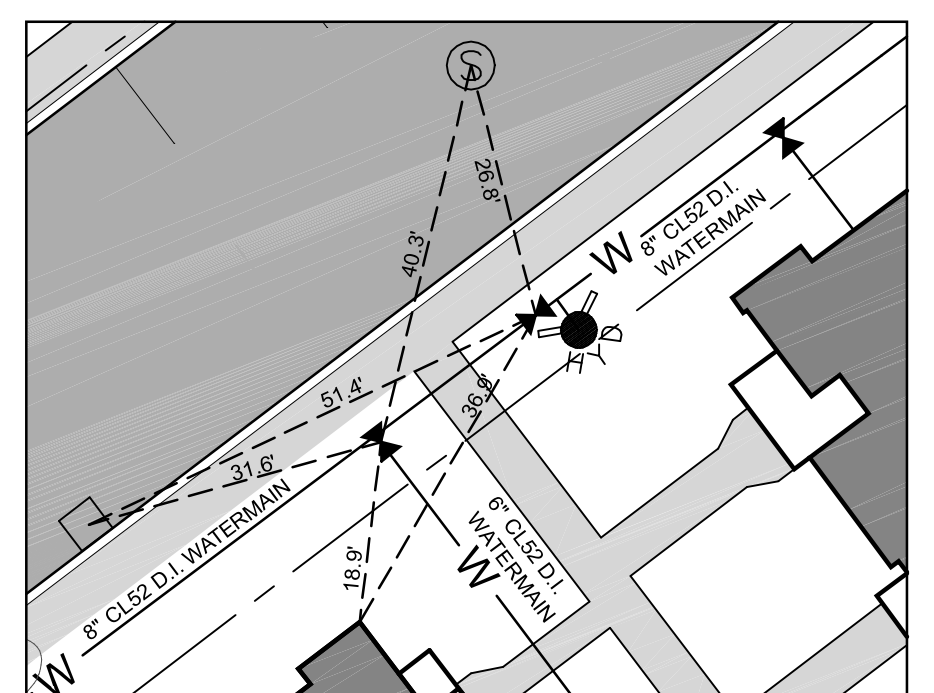
LEGEND



INSET 'A'
SCALE: 1" = 20'

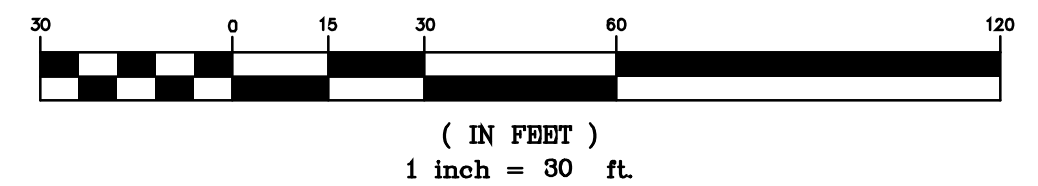


INSET 'B'
SCALE: 1" = 20'



INSET 'C'
SCALE: 1" = 20'

GRAPHIC SCALE



WILLISTON DISCRETIONARY PERMIT DP-09-01
TAX PARCEL # 08:104:010, 08:143:002,004, & 010

REVISIONS		# OF SHEETS
THESE PLANS WITH LATEST REVISIONS SHOULD ONLY BE USED FOR THE PURPOSE SHOWN BELOW:		
<input type="checkbox"/>	SKETCH/CONCEPT	
<input type="checkbox"/>	PRELIMINARY	
<input type="checkbox"/>	FINAL	
<input checked="" type="checkbox"/>	RECORD DRAWING	DRAFT
proj. no. 01-087		
survey L&D		
design DJG/ABR		
draw L&D		
checked DJG/ABR		
date 11/27/17		
scale AS SHOWN		
sht. no. R6A		

FINNEY CROSSING
A PLANNED UNIT DEVELOPMENT
WILLISTON, VERMONT

- PLAN -
ZEPHYR ROAD &
HOLLAND LANE

LA MOUREUX & DICKINSON
Consulting Engineers, Inc.
14 Morse Drive
Essex Junction, VT 05452
(802) 878-4450