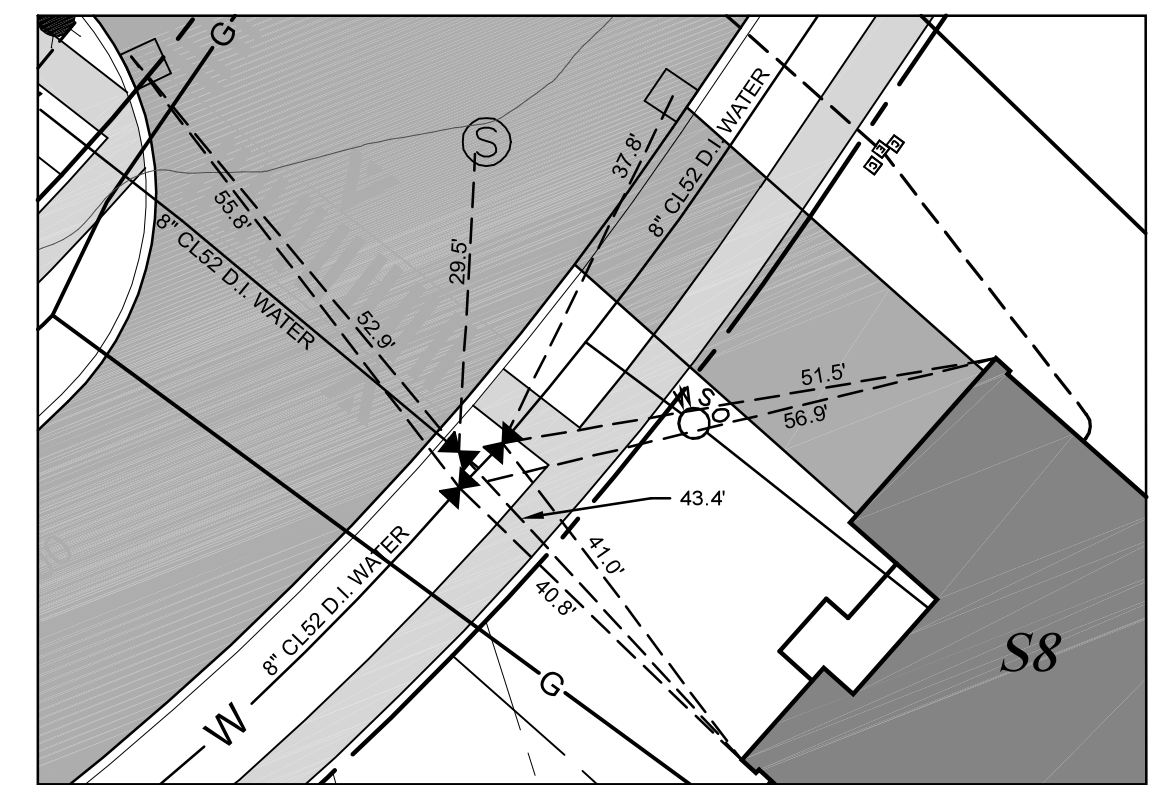
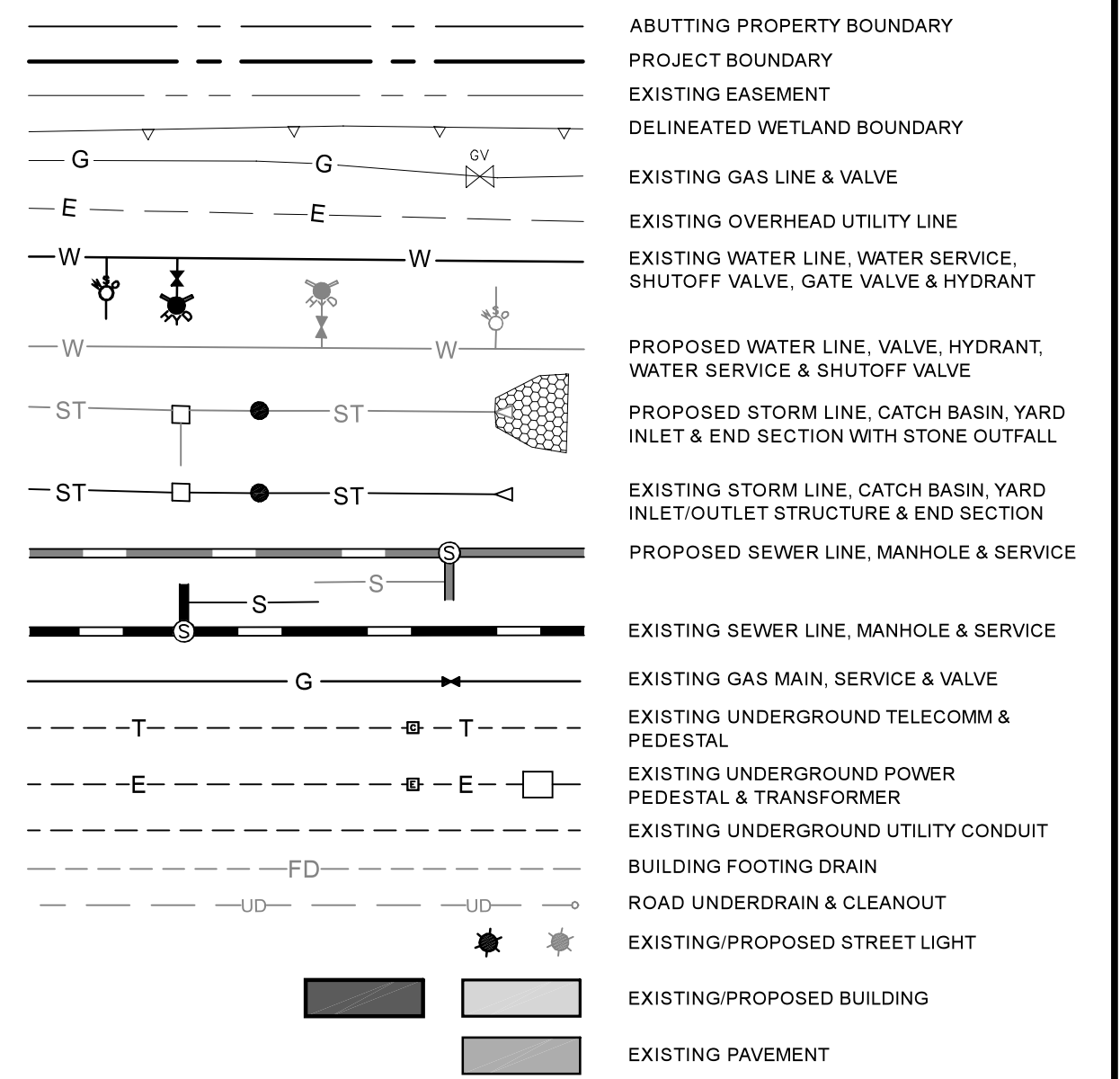


LEGEND



INSET 'A'
SCALE: 1" = 20'

THIS PLAN WAS REVISED IN NOVEMBER 2017 TO SHOW THE RECORD HORIZONTAL LOCATIONS AND TIES TO THE FOLLOWING ITEMS:

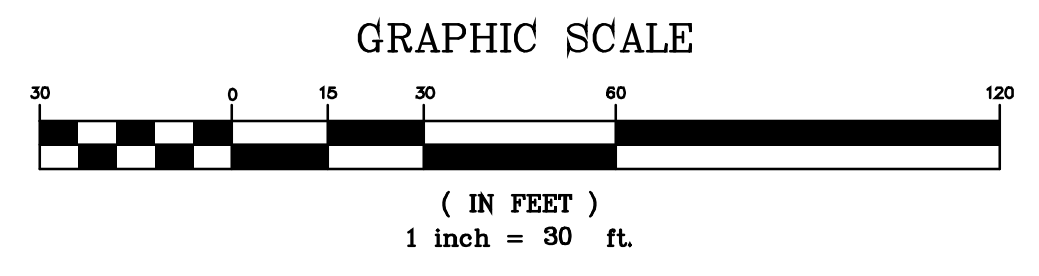
- HYDRANTS, VALVES, CURB STOPS

THIS PLAN WAS REVISED IN NOVEMBER 2018 TO SHOW THE RECORD HORIZONTAL LOCATIONS OF THE FOLLOWING ITEMS:

- SANITARY MANHOLES, SEWER MAINS & SERVICES
- STORM MAHOLES, CATCH BASINS & STORM PIPES
- WATERMAIN, WATER SERVICES
- GAS MAINS, GAS SERVICES & GAS VALVES
- UNDERGROUND ELECTRIC, CABLE & TELECOMM. CONDUITS
- TRANSFORMER PADS, ELECTRIC PEDESTALS, CABLE PEDESTALS & TELECOMM. PEDESTALS
- LIGHT POLES

THIS PLAN WAS REVISED IN NOVEMBER 2018 TO SHOW THE RECORD VERTICAL ELEVATIONS OF THE FOLLOWING ITEMS:

- SANITARY MANHOLE RIMS, SEWER MAIN INVERTS
- STORM MANHOLE RIMS, CATCH BASIN RIMS/GRATES, STORM PIPE INVERTS



WILLISTON DISCRETIONARY PERMIT DP-09-01
TAX PARCEL # 08:104:010, 08:143:002, 004, & 010

REVISIONS		# OF SHEETS
THESE PLANS WITH LATEST REVISIONS SHOULD ONLY BE USED FOR THE PURPOSE SHOWN BELOW:		
<input type="checkbox"/> SKETCH/CONCEPT		
<input type="checkbox"/> PRELIMINARY		
<input type="checkbox"/> FINAL		
<input checked="" type="checkbox"/> RECORD DRAWING		
FINNEY CROSSING A PLANNED UNIT DEVELOPMENT WILLISTON, VERMONT - PLAN - DUNMORE LANE STA208+00 TO 214+12, & HALF MOON LANE		proj. no. 01-087 survey L&D design DJG/ABR drawn L&D checked DJG/ABR date 11/27/17 scale AS SHOWN sht. no. R8A
LA MOUREUX & DICKINSON Consulting Engineers, Inc. 14 Morse Drive Essex Junction, VT 05452 (802) 878-4450		