

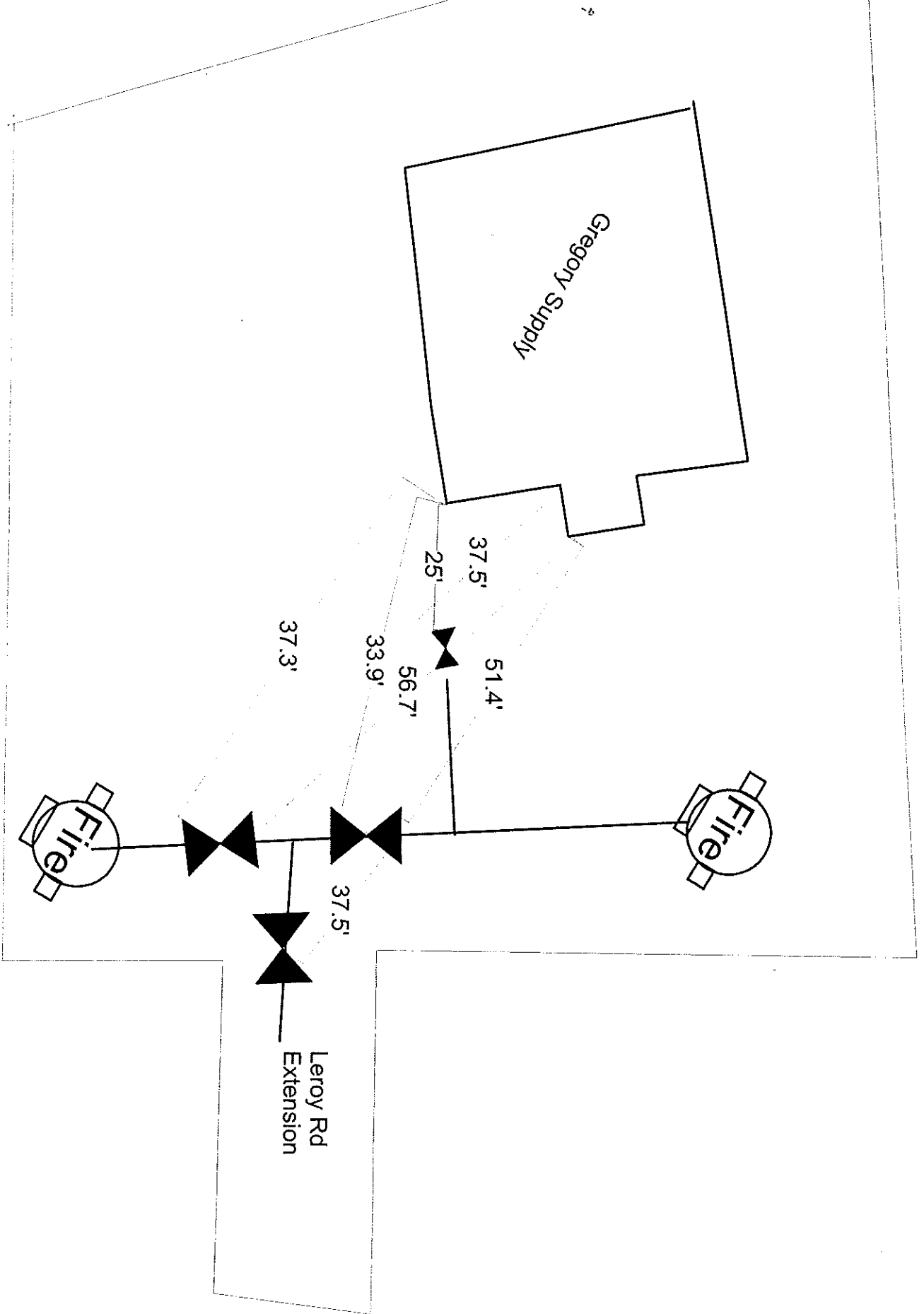
GM.  
Pedestal



62.8'

Edge of  
Blacktop





W 4th St  
Hydrant

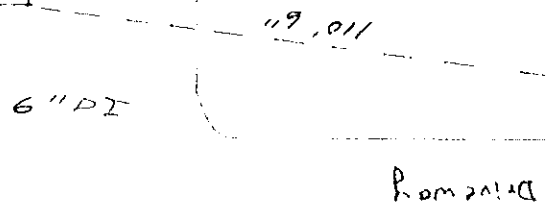
H.V.D.  
262

Lots 445  
Adams Park  
Federal Express

NE corner of  
buildings

Manhole  
90'

Transformers

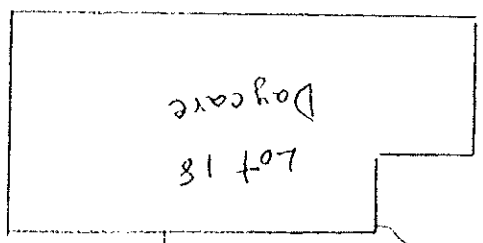


Driveway

Driveway

8" DI

MASHFILL Ave. (W →)



6" DI

Hydrant #18



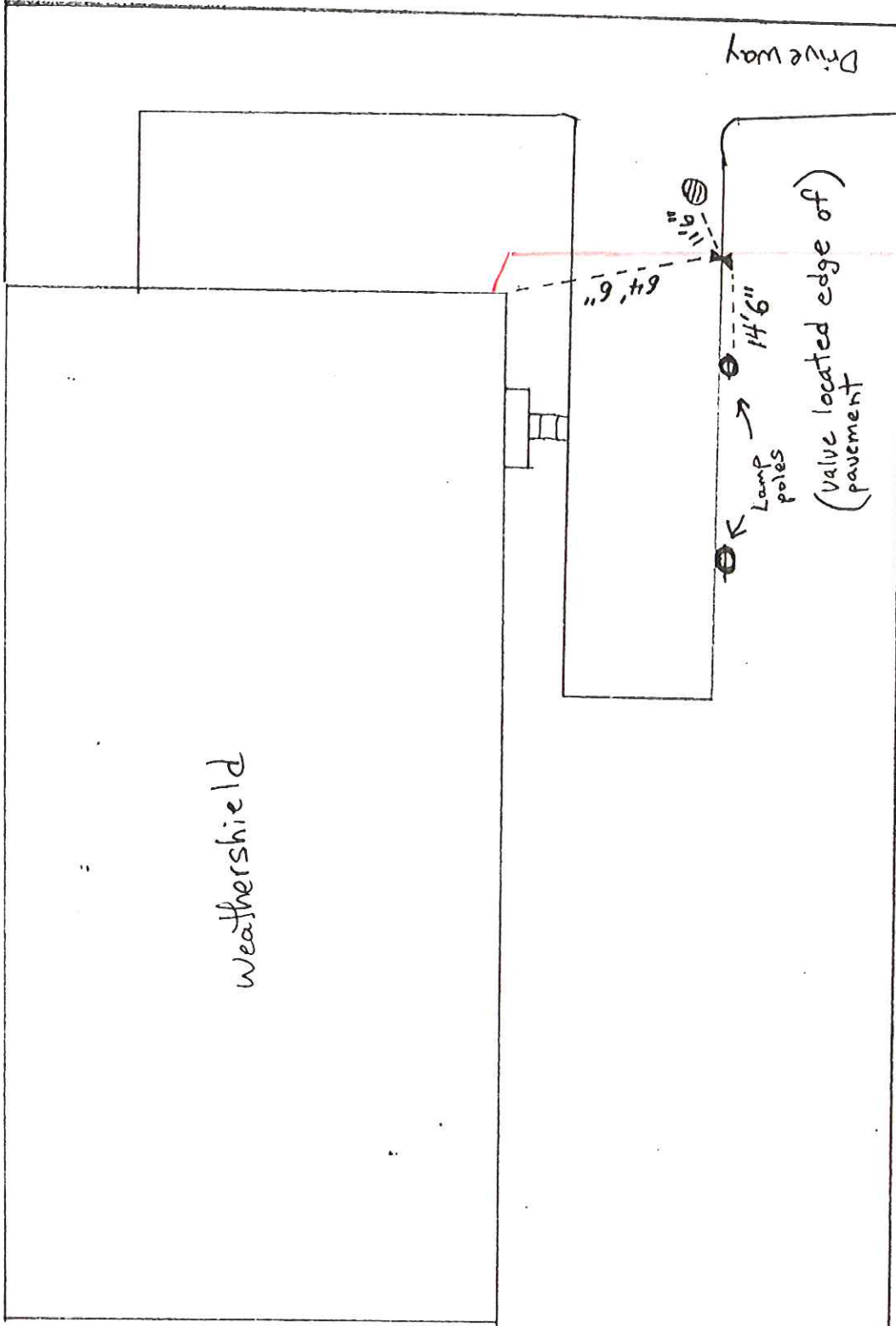
DITCH

8" DI

Drive

79B Shut-off for weather shield

weathershield



Driveway

(Valve located edge of pavement)

Lamp poles

8" AC

8 PI

Marshall Ave.  
(Adams Park)

HYD 262

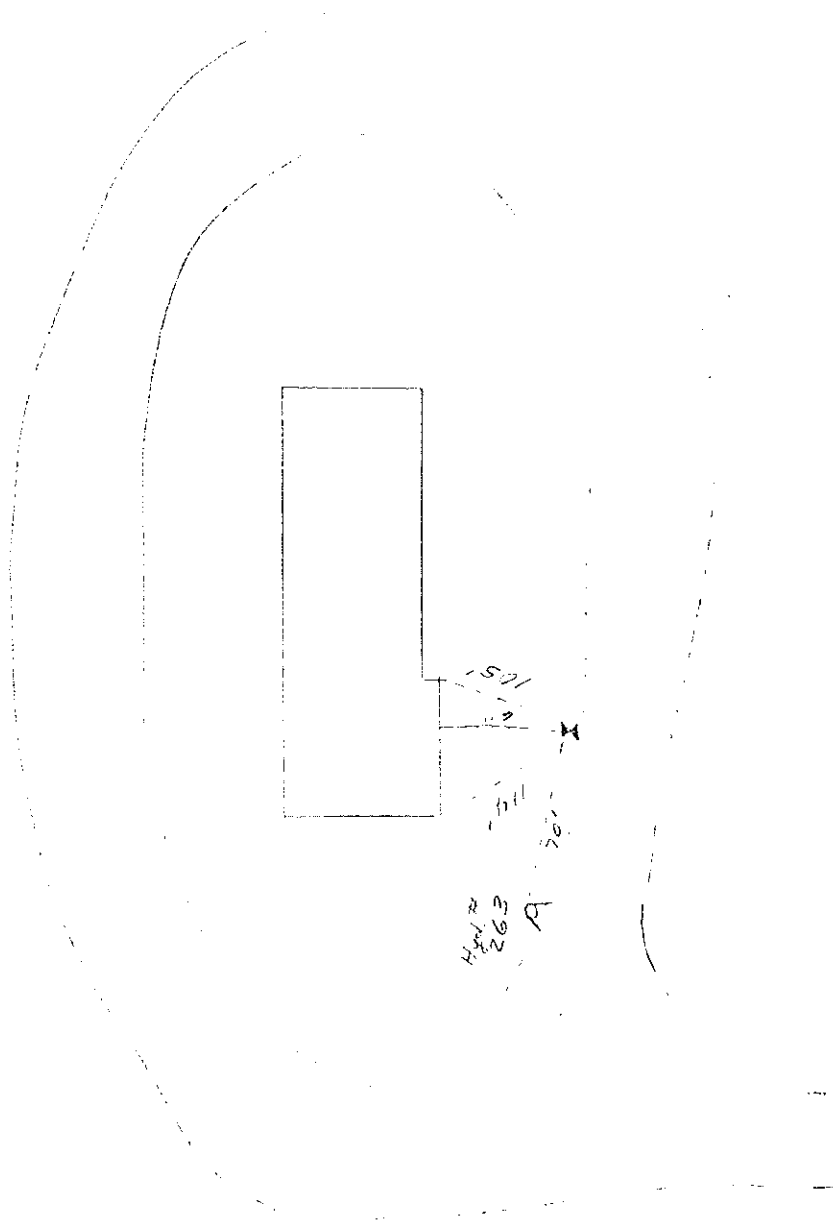
8 PI

N ←

South Brownell

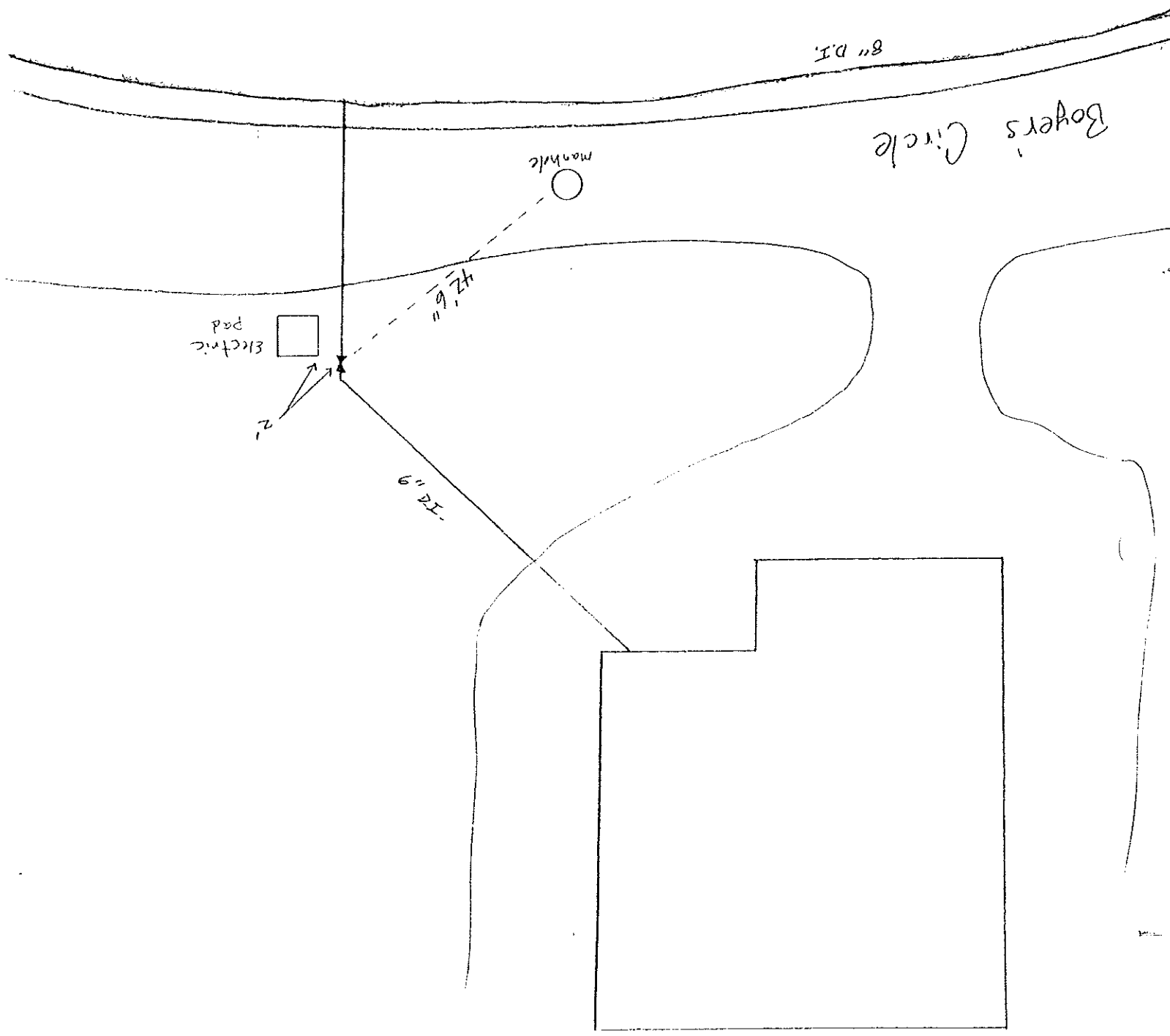
→ S

Lot 16 + 17 Boyer Circle  
Riverside Express



15.01.10

Lot 2 Adams Park



Boyers Circle

8" D.I.

manhole

Electric pad

6" D.I.

2'

WILLINGTON

DISTRIBUTION CENTER

BUILDING A

BUILDING B

PARKING

BUILDING B

NORTH

PARKING LOT

LOADING DOCK

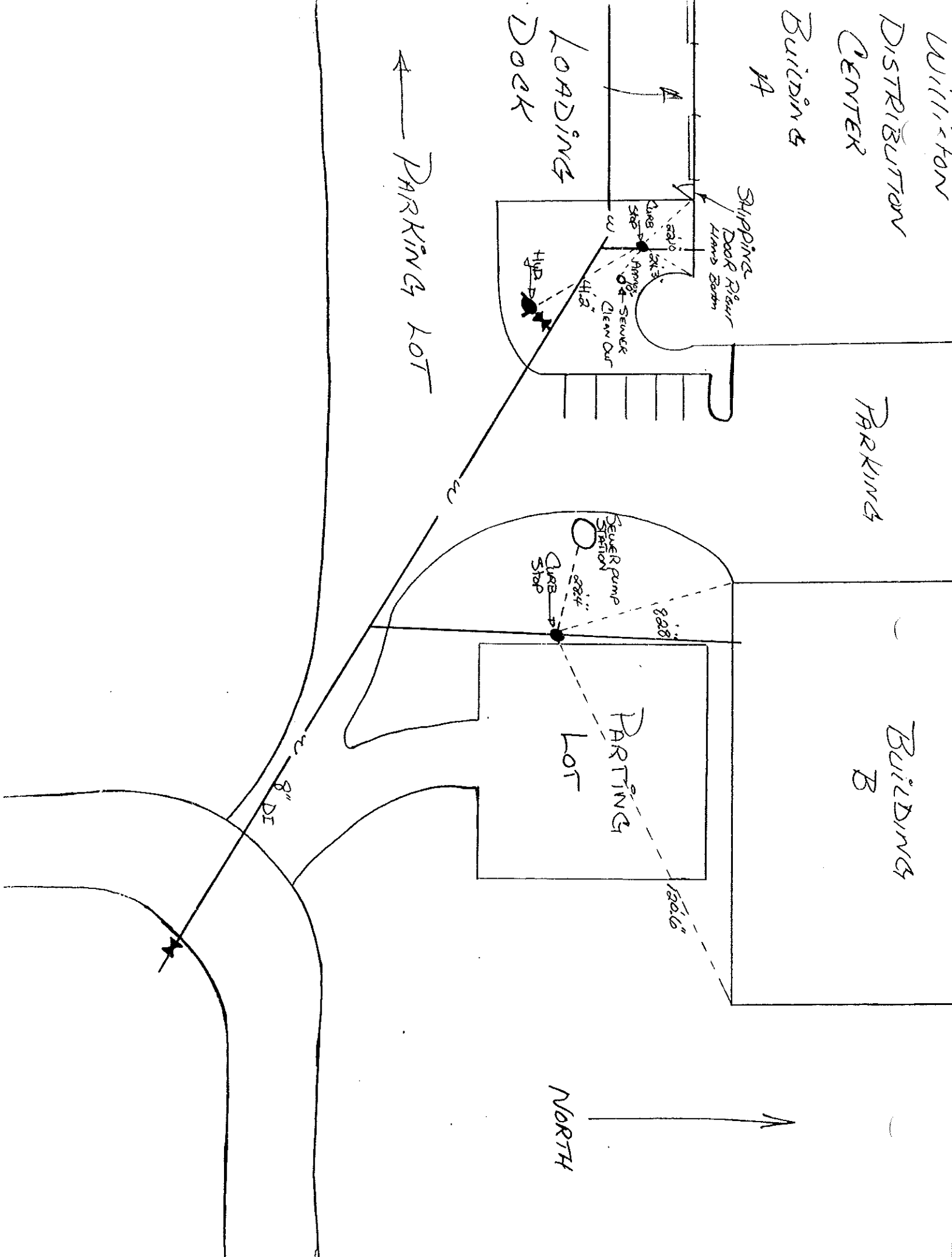
SHIPPING DOOR

REAR HAND DOOR

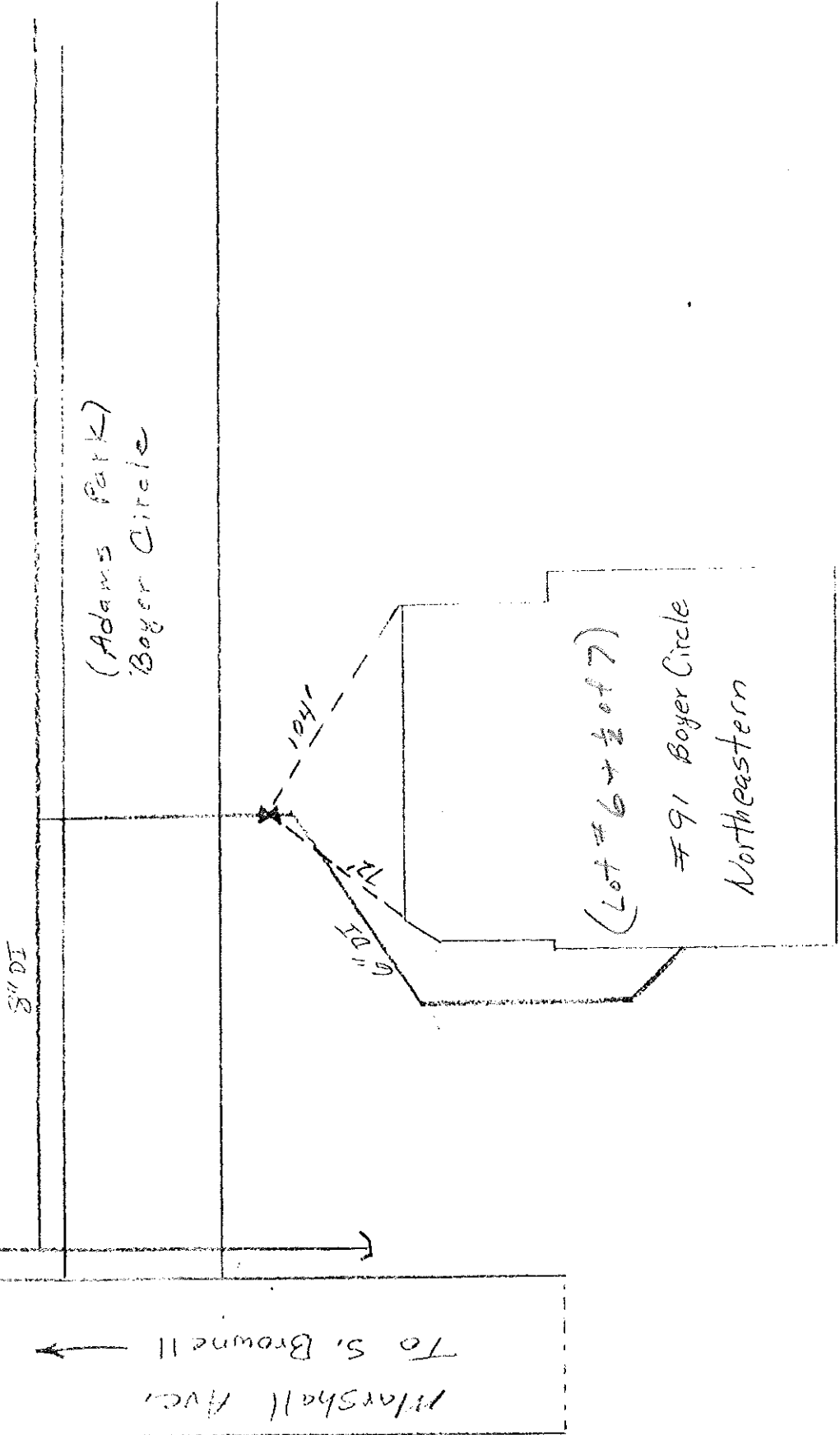
SEWER CLEAN OUT

SEWER PUMP STATION

PARTING LOT



Northeastern Building Adams Park





HYD. 262

Lots 445  
Adams Park  
Federal Express

NE corner of  
building

Manhole

Transformers

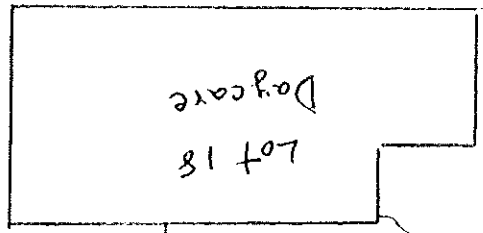
6" DI

110' 6"

Driveway

65'

Driveway



Lot 18  
Daycare

8" DI

MASHALL Ave. (W →)

Hydrant #18

6" DI

Valve

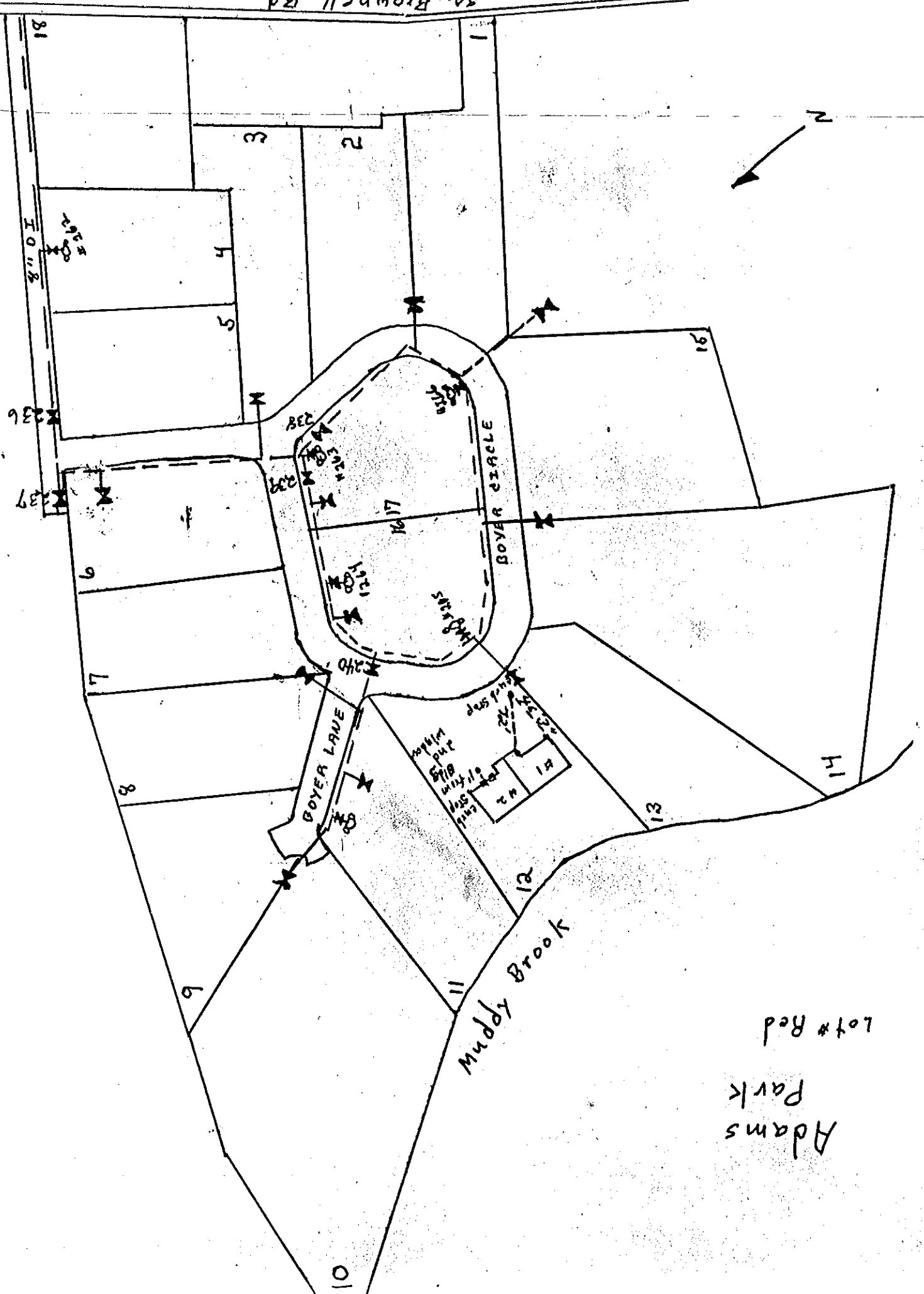
S.A.C.

of ground

(← N)

50. Brownell Rd

Adams Park  
Lot # Red



1

2

3

4

5

16

1617

936

337

6

7

8

9

10

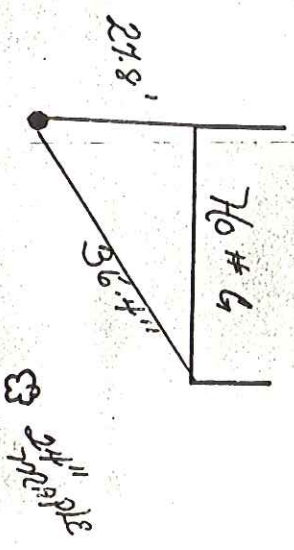
11

12

13

14

East

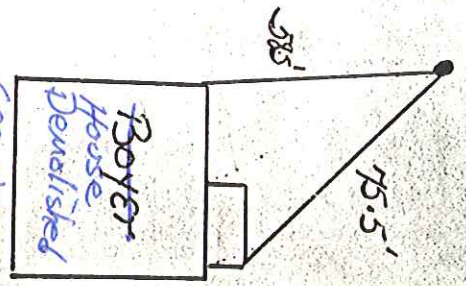
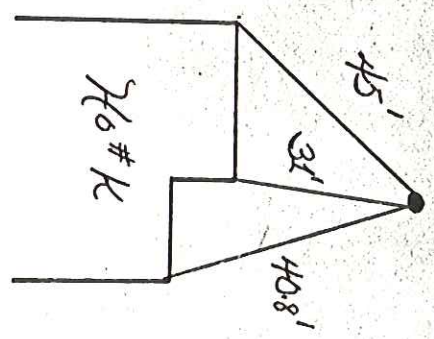
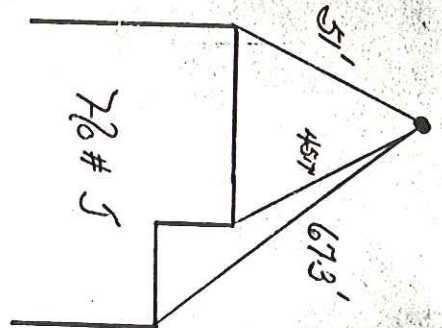
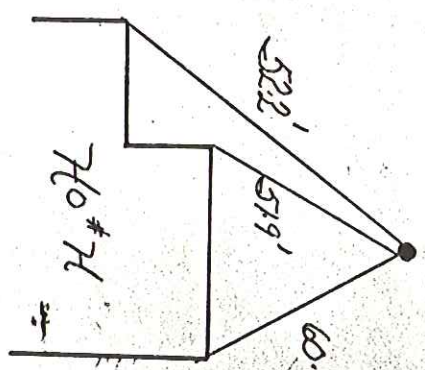
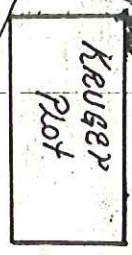


24" pipe

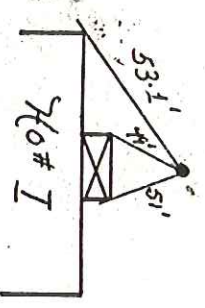
North

# South Broussell Rd.

South



See new map



West

# BOYER FARM

SOUTH BROWNELL RD.

Tapvalve

#20

22' 2"

42' 4"

SMH

19'

Bldg

192 S. Brownell Rd.

21' 3"

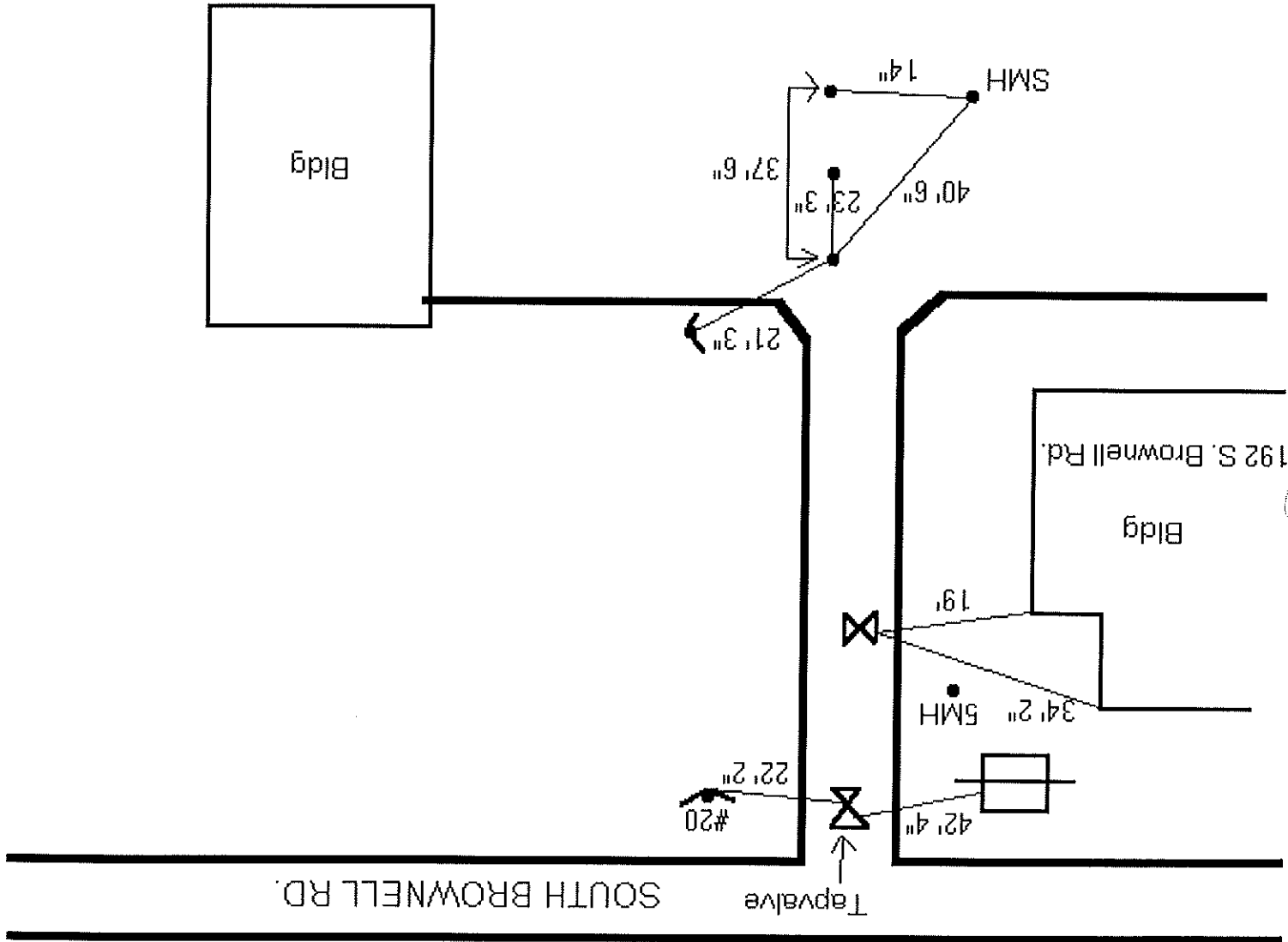
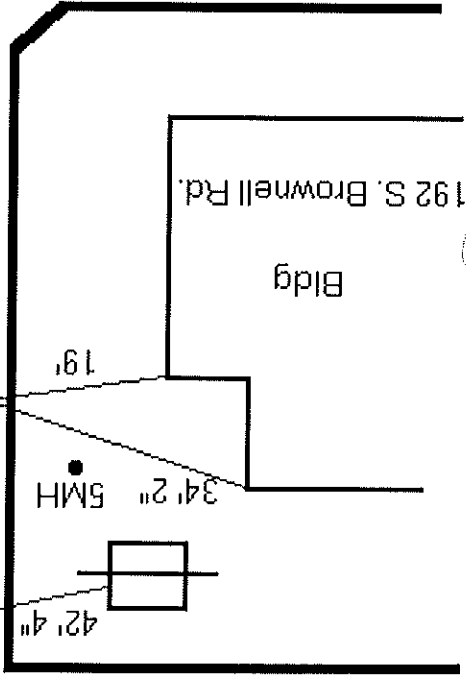
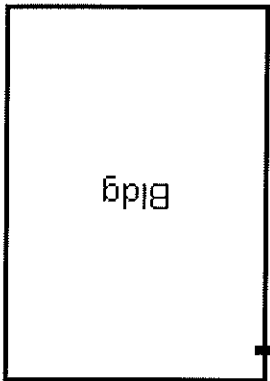
37' 6"

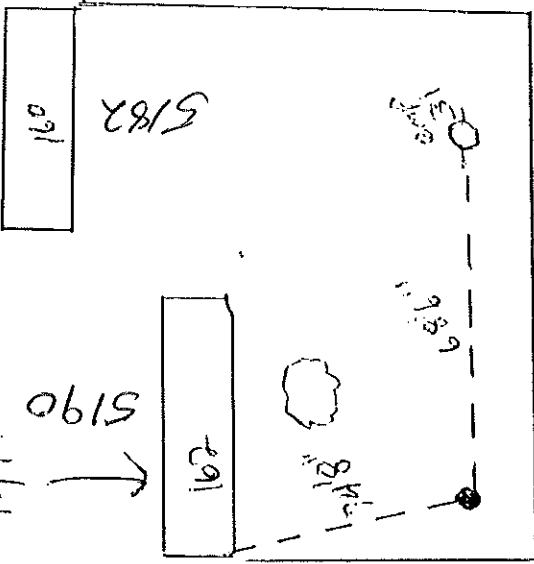
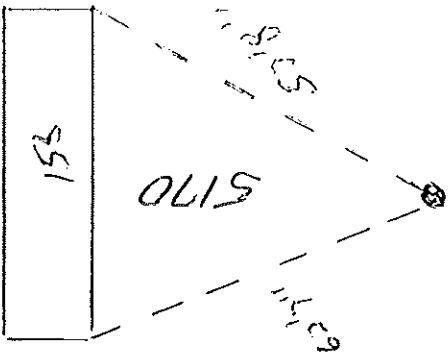
40' 6"

14"

SMH

Bldg





New Trailers  
10/19/14

TO  
TAPT  
CORNERS  
↓

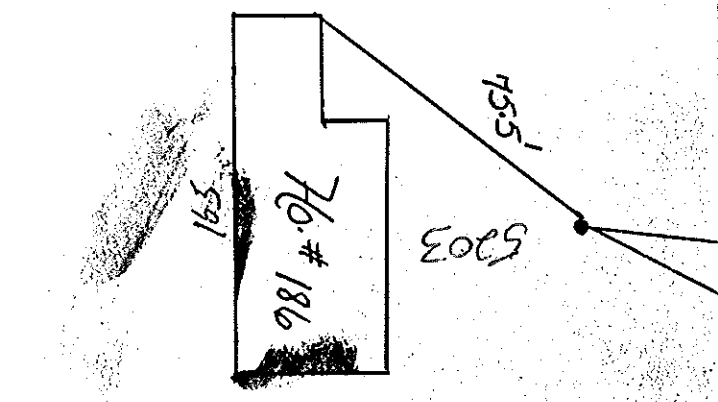
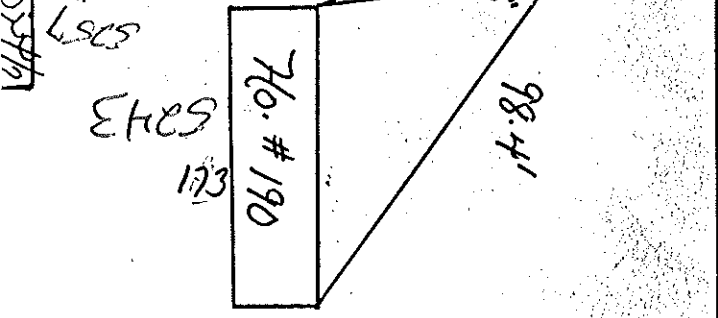
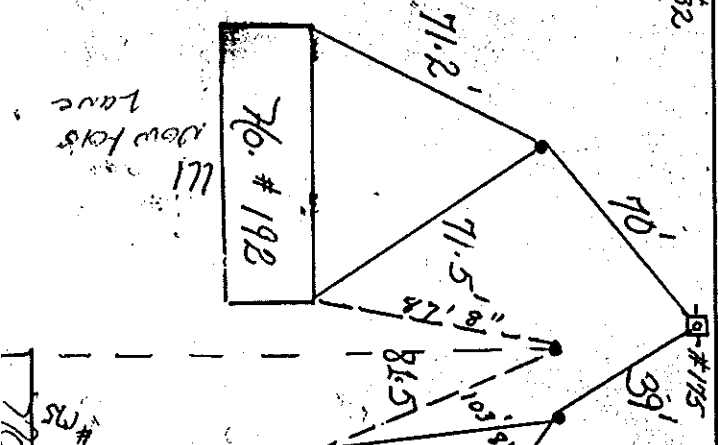
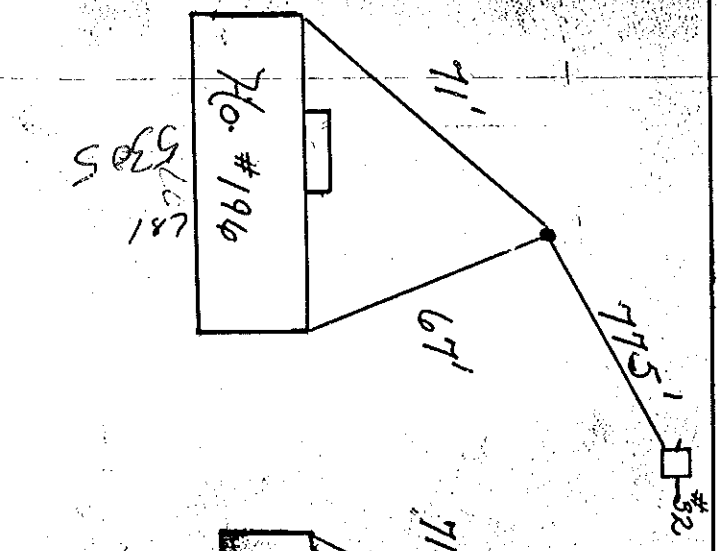
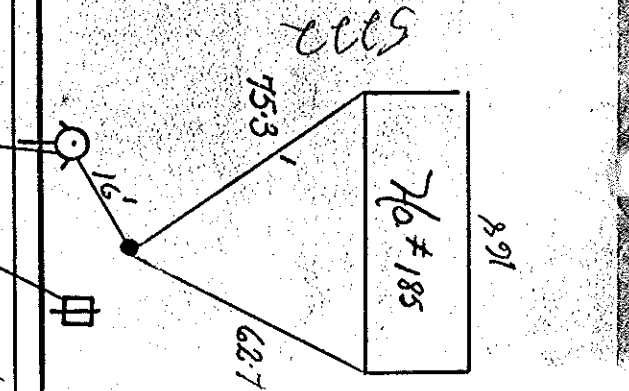
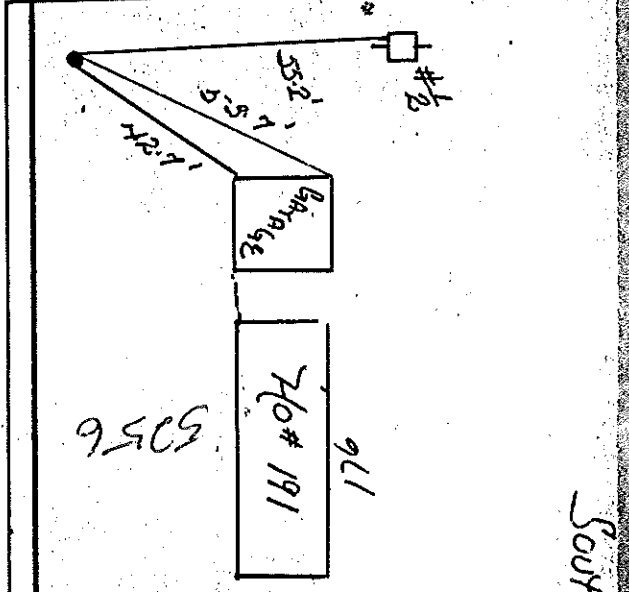
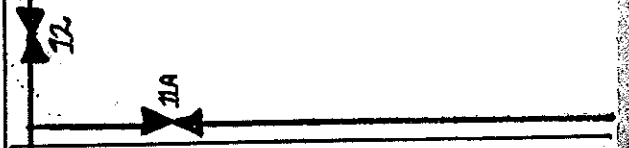
Route 2

South

COMM & REC SP

2697

Rt 2



2697

M = METER  
R = READER

