

**Proposed Building**

Cutoff GE Walllighter 250  
 outdoor luminaire,  
 100 watt metal halide  
 or approved equal.

First Floor = 365.0  
 Parking Garage = 355.0

100 watt GE OWL  
 outdoor luminaire  
 or approved equal.

11 Spaces

**Proposed Building**

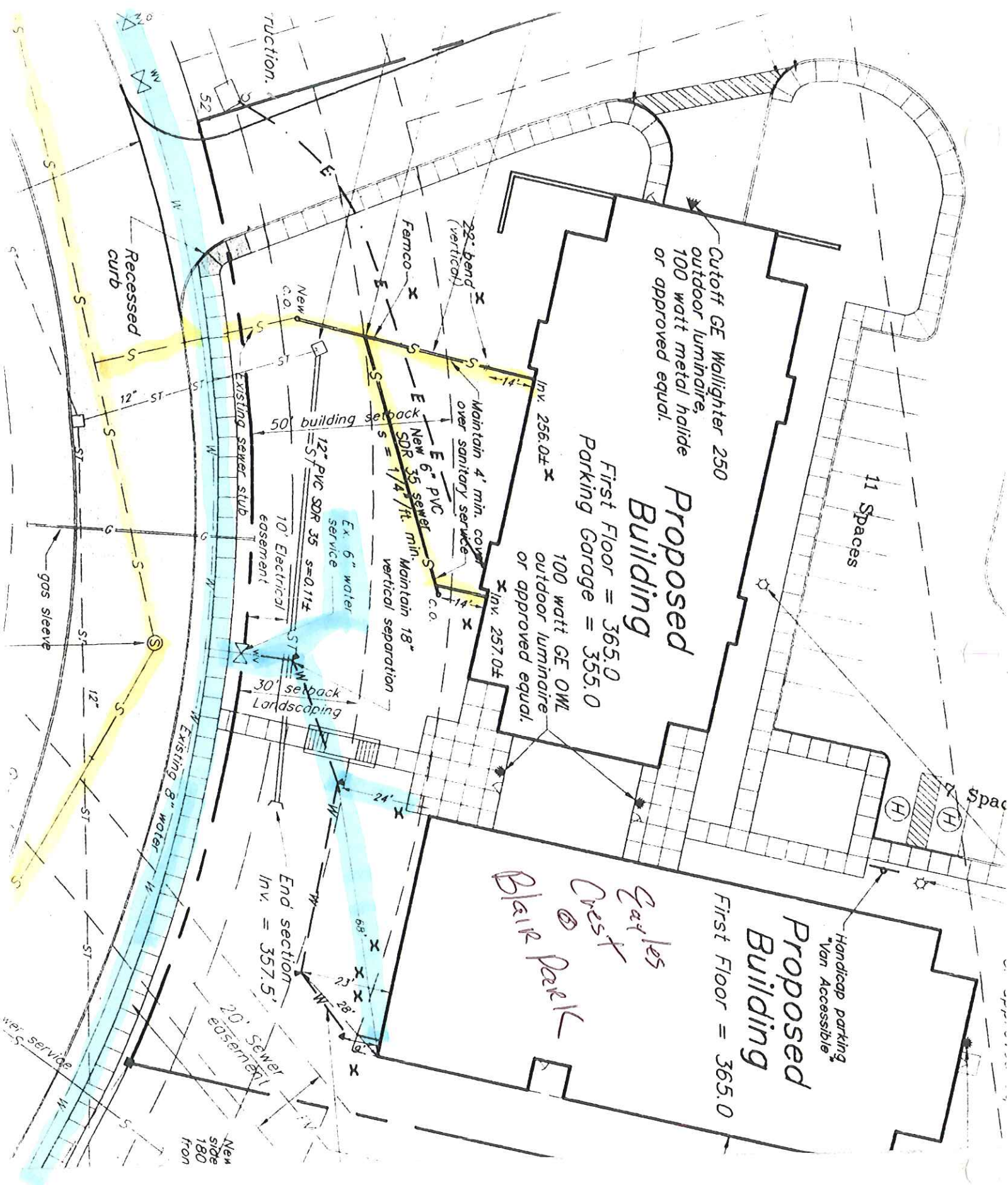
First Floor = 365.0

Handicap parking  
 Van Accessible

*Garles  
 Crest  
 Blair Park*

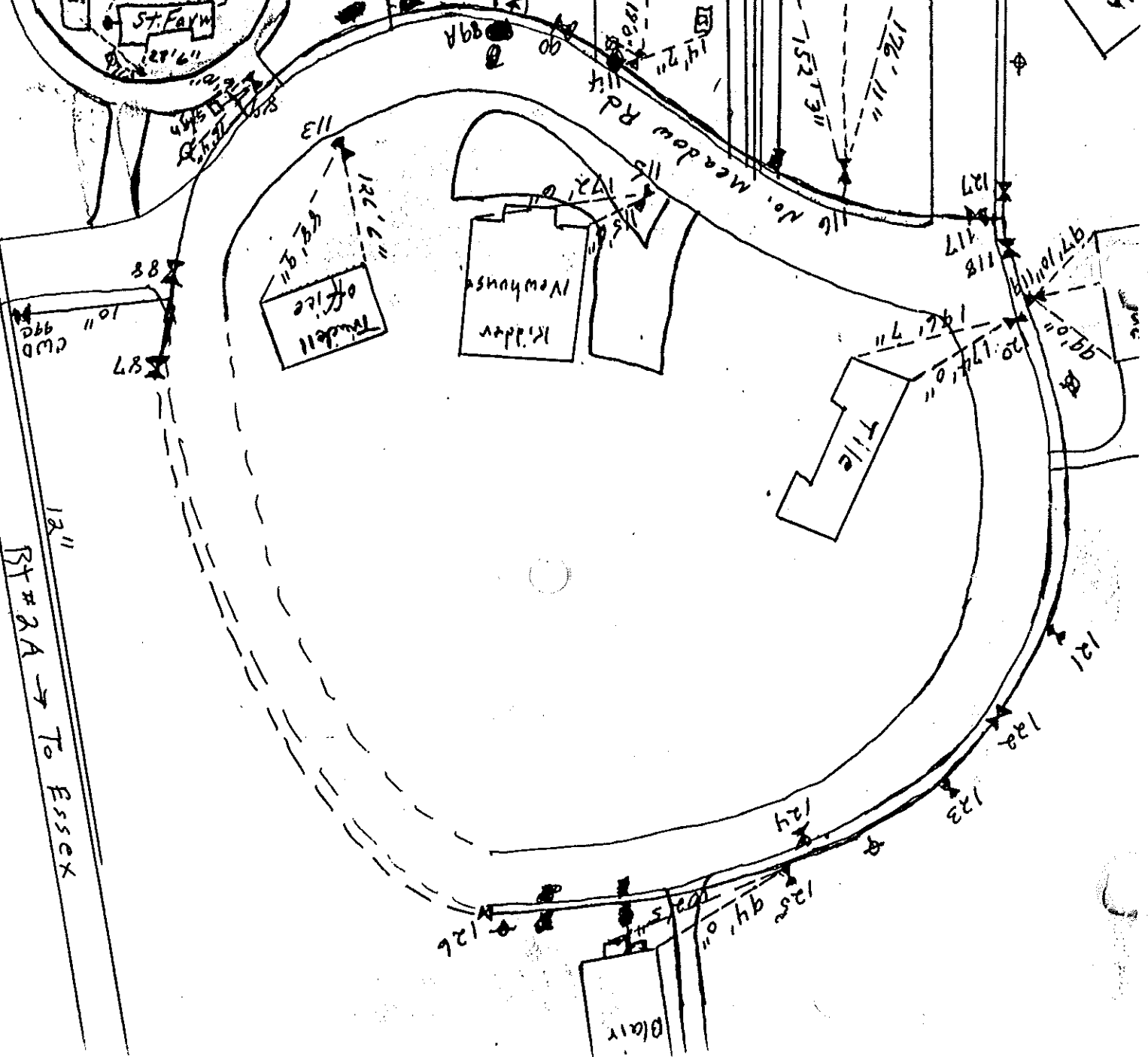
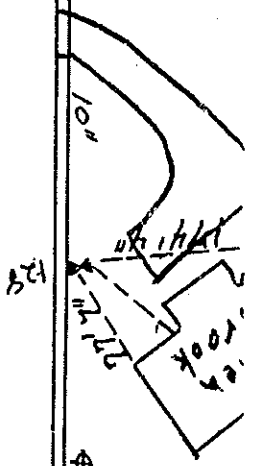
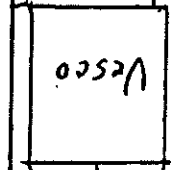
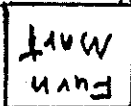
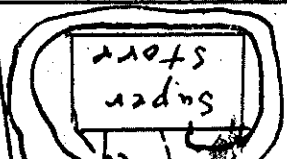
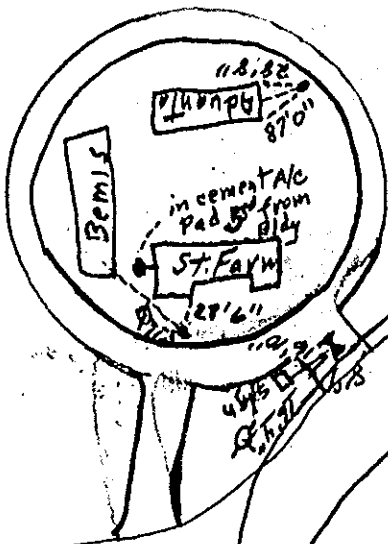
End section  
 Inv. = 357.5'

New side  
 180  
 from

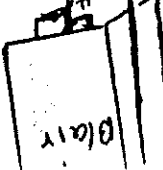


12" 12" to Buyl ← Rt# 2

Blair Parks  
Water Mains - Red



12" Rt# 2A → To Essex



# LAWRENCE PLACE

LAWPLACE.BMP

ROUTE 2A

BLAIR PARK ROAD

Building 5

15.7'

82'

46'

106.8'

33'

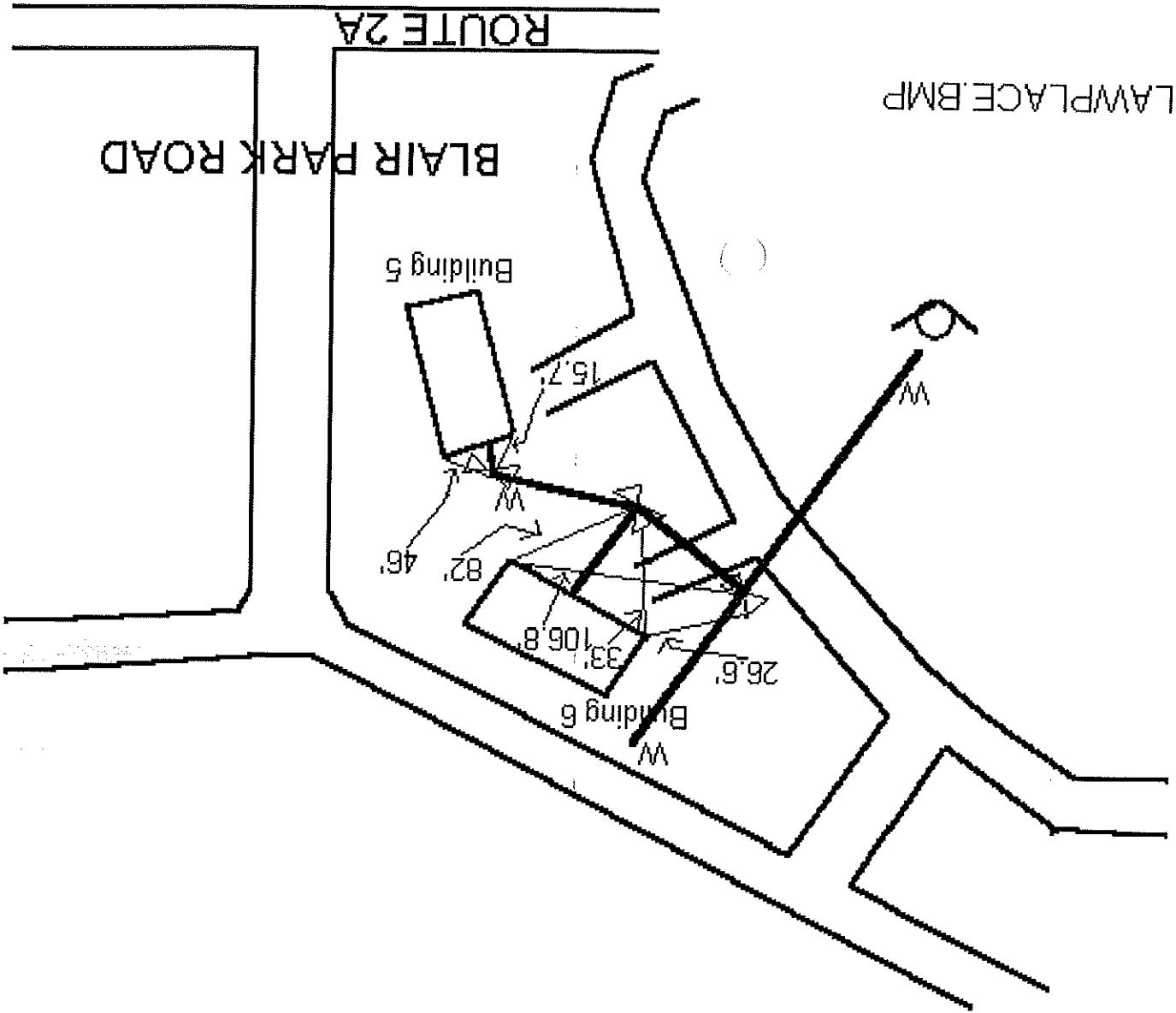
26.6'

Building 6

W



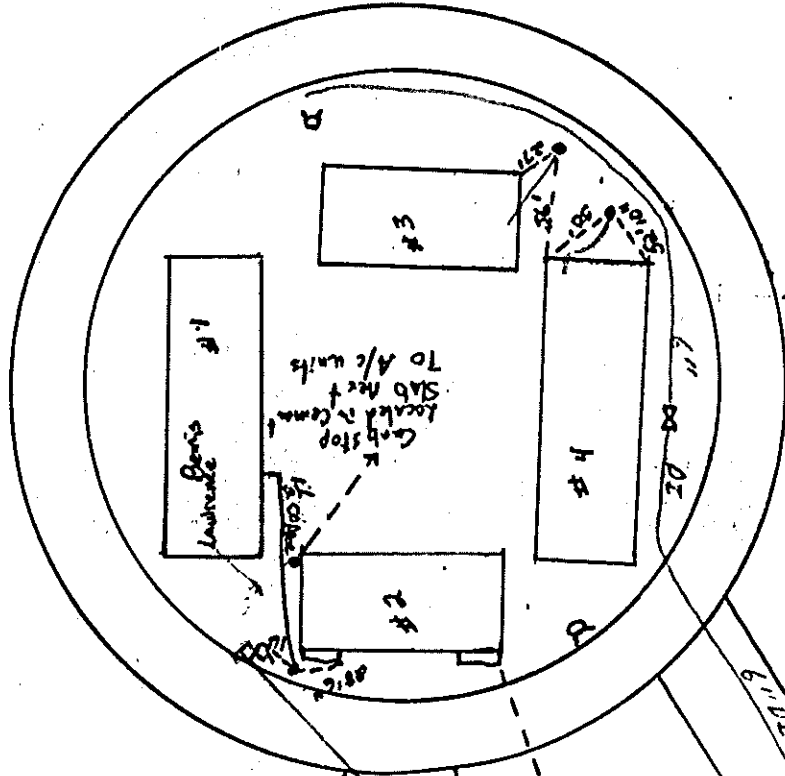
W



Essex Road RT2A → Taft Corners

East ↖  
West ↘

Suite 1 Blair Park



← Essex

99C  
C20

Blair Park Road

10" DI

Transforme

6" DI

16" DI  
76 1/2" x 54"

10" DI

Trudell

5

574

E 4  
37

W 57



STAIR  
↓

910  
910

HOUSE  
# 265  
DR 236  
DE FREUDS  
ICE CREAM

5689

1005' PARKING



DR OFFICE  
# 2340R  
261

5667

76'  
47'  
81'

NORTH

South

← 6009

Rte 2

← 6009



#49  
111

GAR

86'

92'

5689

76 # 234  
592



76 # 234  
798

76'

81'

5667

41'



North

875

87'

88'

5649

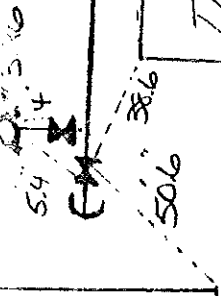
NATIONWIDE  
LST

21.6'

(8)

NEW

Building



96'

INTERSTATE

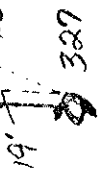
PETER

JUDGE, Co.

RETAINING WALL

7.3'

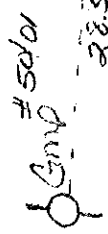
53'



387

Old Farm House

12' AC



28.5'

100'

HYD# 32



11.5' From Rd.

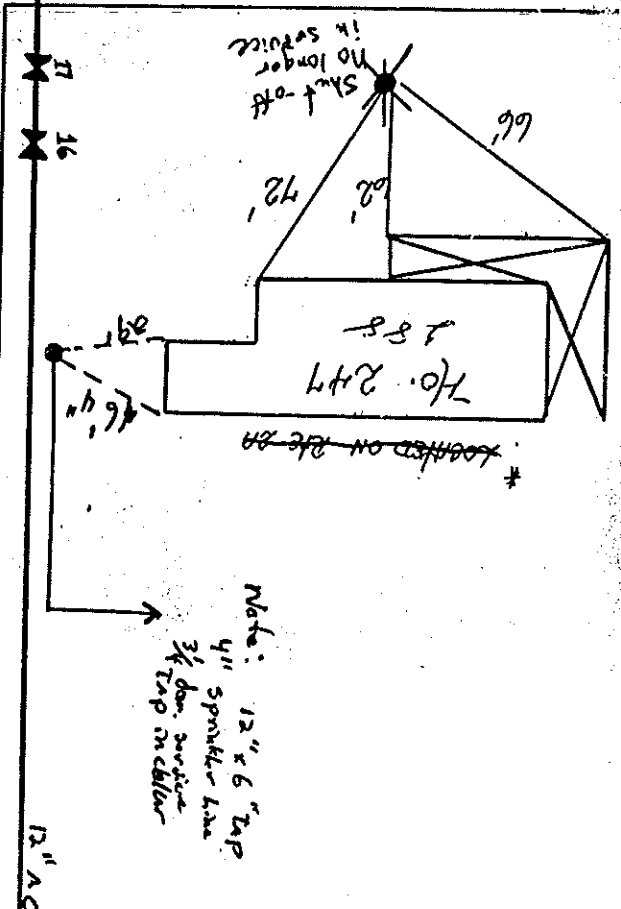
TRAIL MARKS

SE BOLLINGERS

Survey line with various markings and symbols.

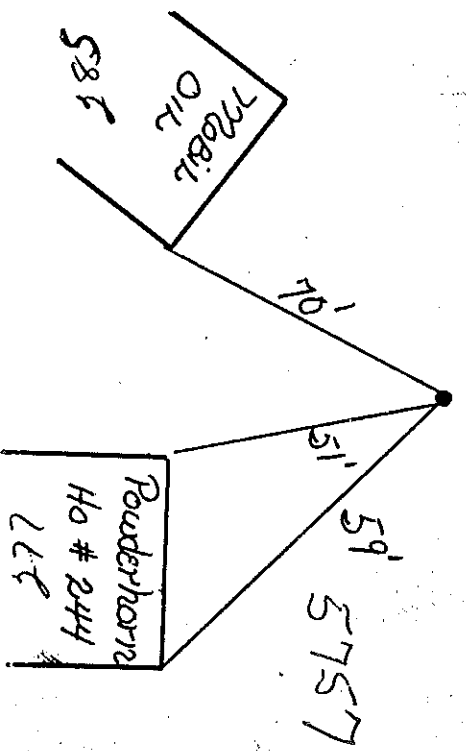
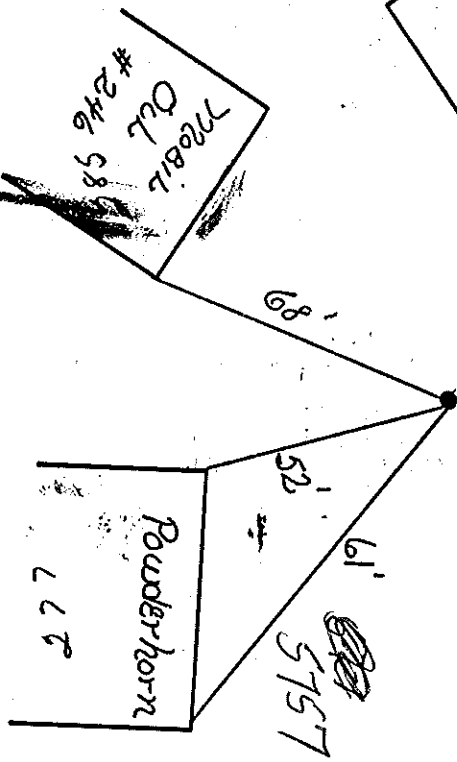
Route 2

2 A



South

U.S. Route 2

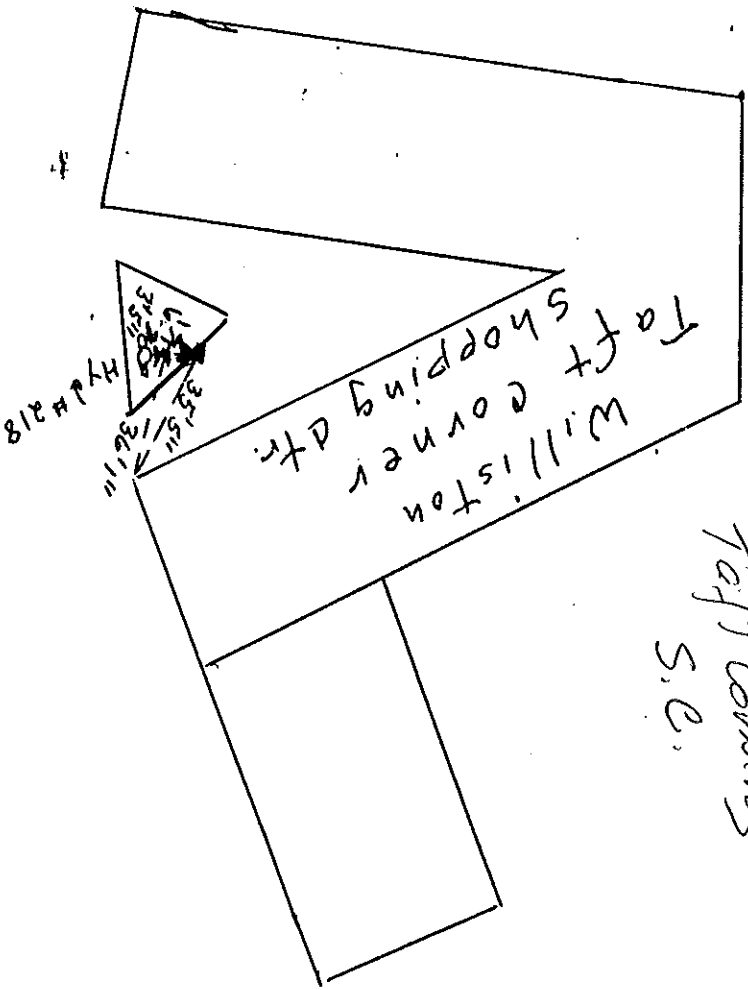


South



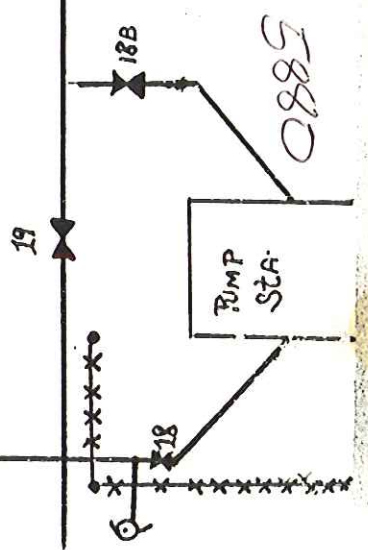
RT 2 → East

RT 2A → North



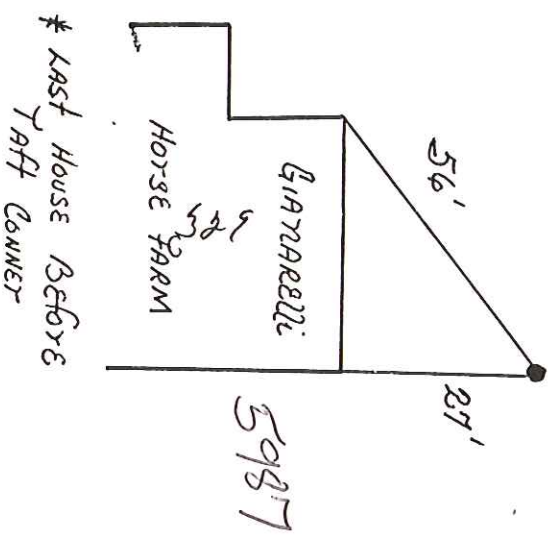
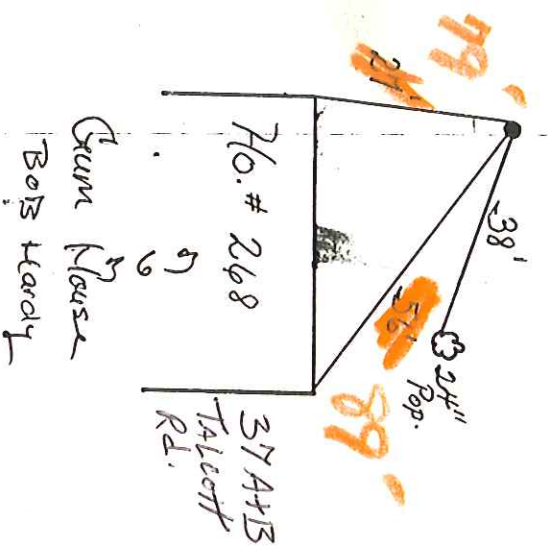
1-201  
Taft corners  
S.E.

South



CE 937  
U.S. Rte. 2

9392



Hardy's

Simons Store

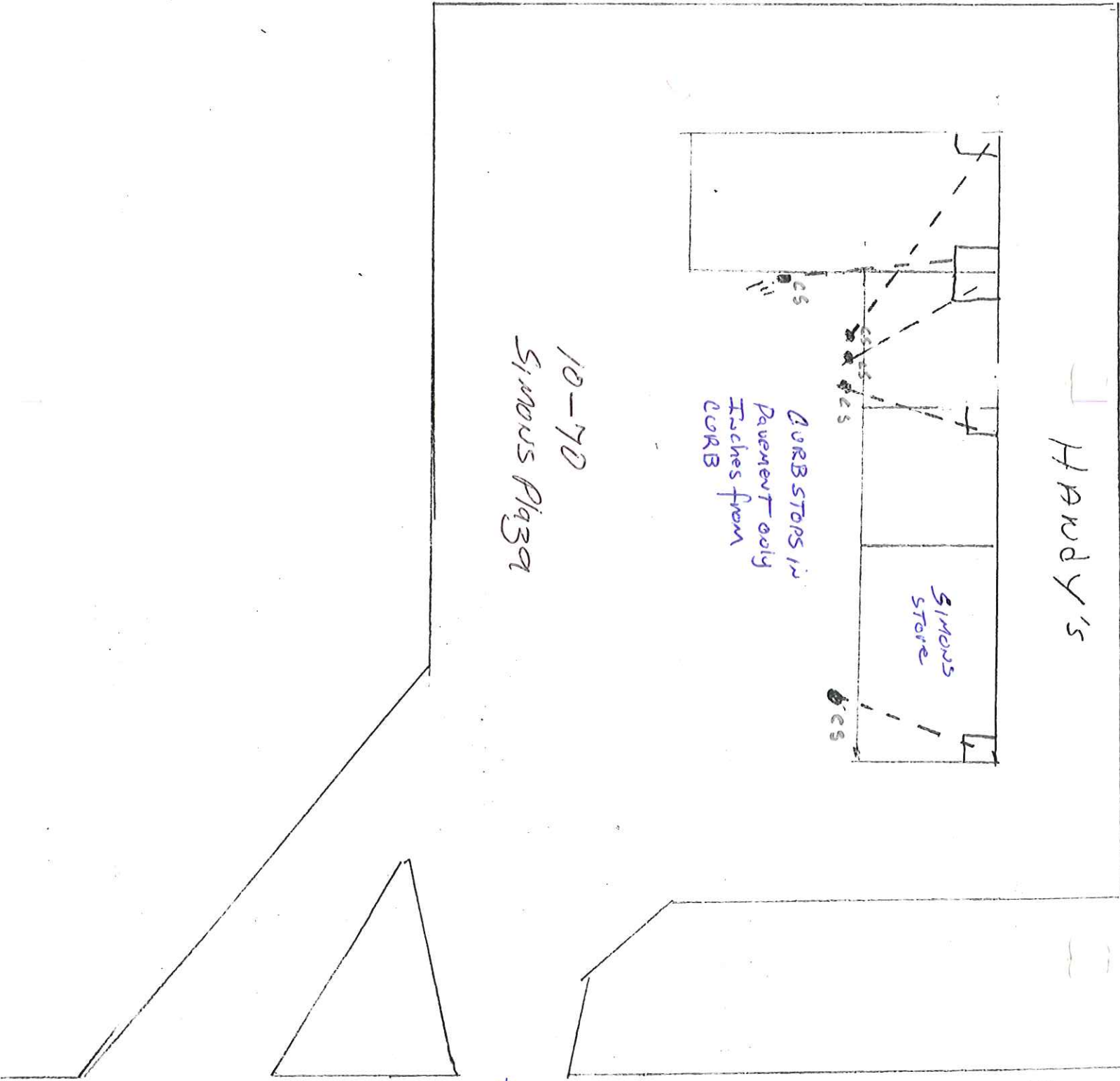
CURB STOPS IN  
PAVEMENT ONLY  
Fishes from  
CORB

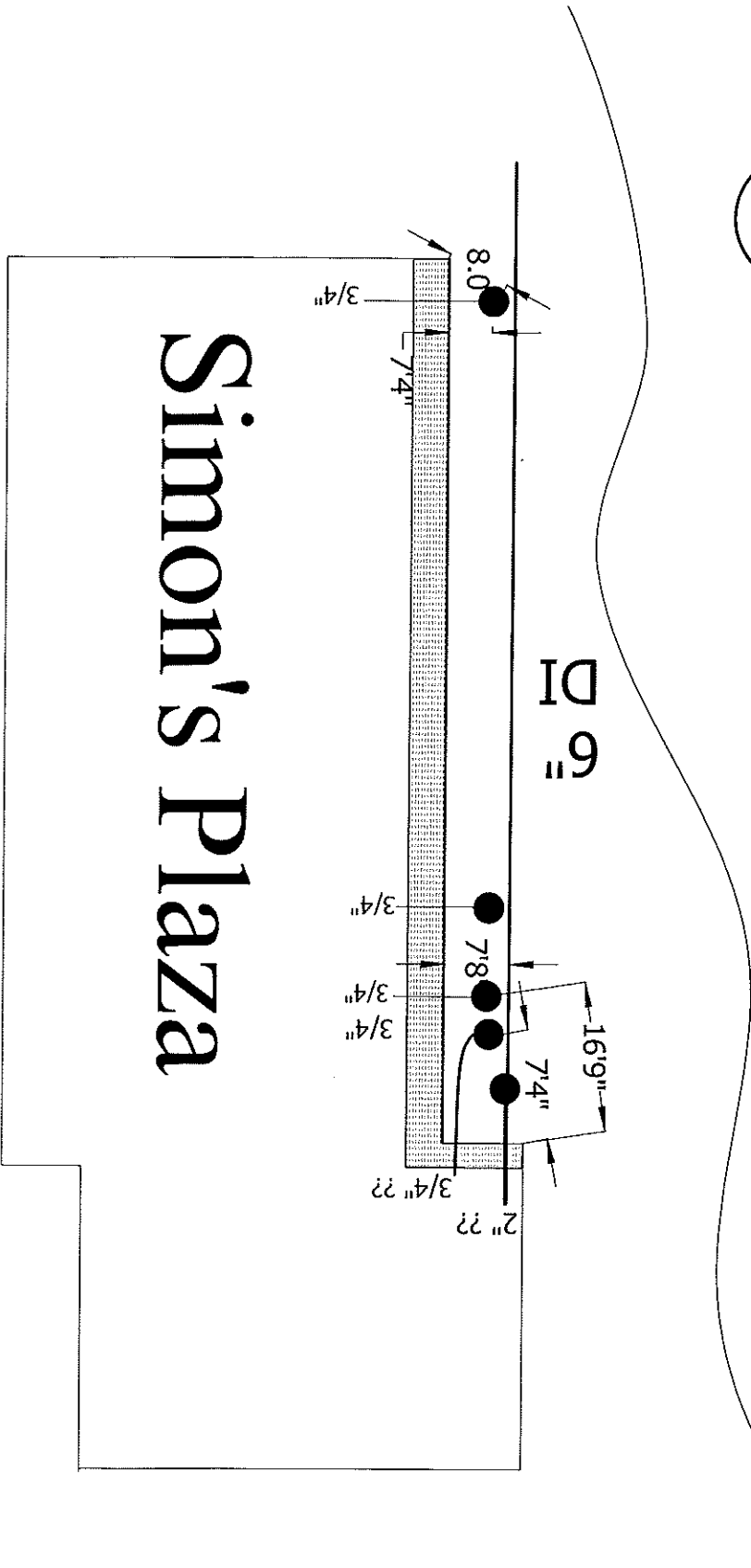
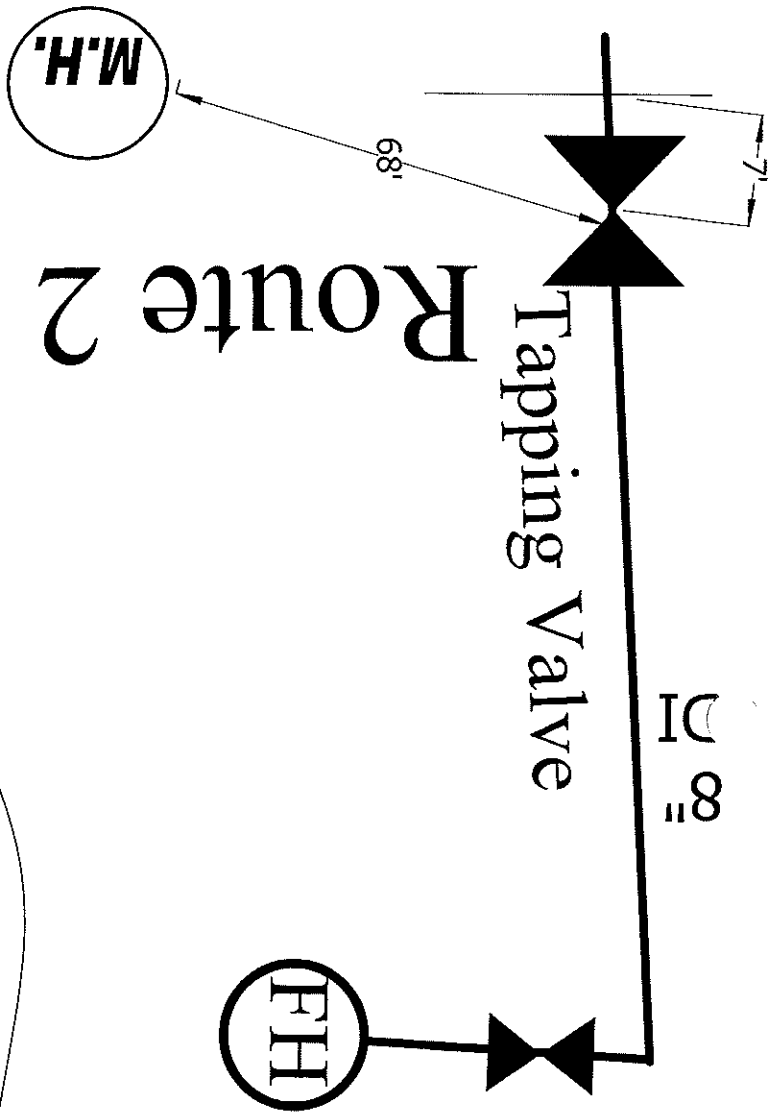
10-70

Simons Plaza

Route 2

E ← continuation of







Driving Range  
6180 Williston Rd

